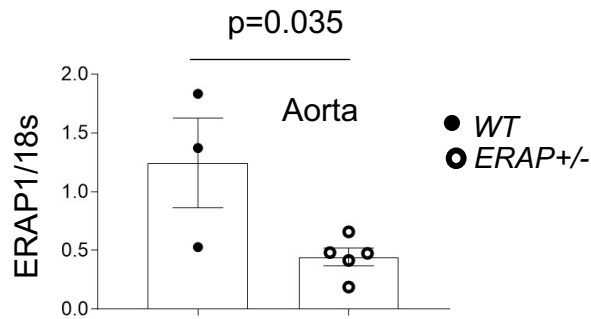
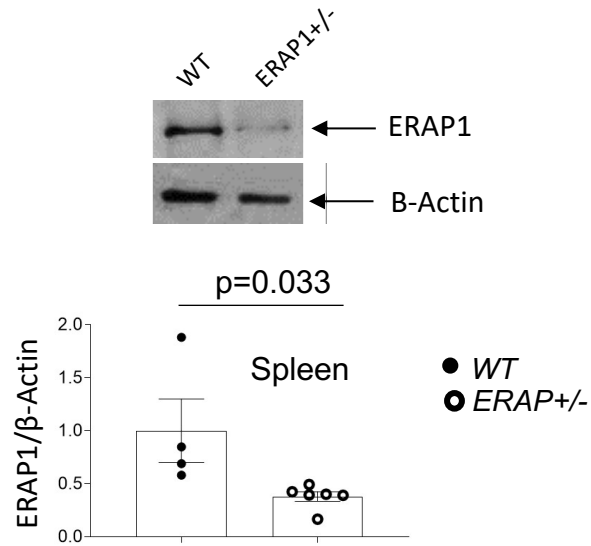


	Dietary Salt	WT	ERAP1+/-
Food (g)	Restricted	3.20 ±0.24	3.13 ±0.36
	Liberal	3.34 ±0.26	3.33 ±0.14
Water (ml)	Restricted	3.60 ±0.52	3.46 ±0.29
	Liberal	7.27 ±0.43	7.42 ±0.23
Urine (ml)	Restricted	1.30 ±0.10	1.24 ±0.10
	Liberal	4.17 ±0.44	4.37 ±0.24
24h Urinary Na+ (mmol/d)	Restricted	0.03 ±0.02	0.02 ±0.03
	Liberal	0.68 ±0.05	0.56 ±0.04
24h Urinary K+ (mmol/d)	Restricted	0.34 ±0.03	0.35 ±0.06
	Liberal	0.29 ±0.02	0.27 ±0.02
Heart Rate (BPM)	Restricted	759.7 ±17.7	716.2 ±15.4
	Liberal	731.9 ±13.5	723.8 ± 8.1
Activity counts	Restricted	7.5 ±2.1	6.6 ±1.0
	Liberal	10.7 ±3.7	9.6 ±2.0
Serum ALDO (ng/dL)	Restricted	35.4 ±3.5	40.6 ±3.3

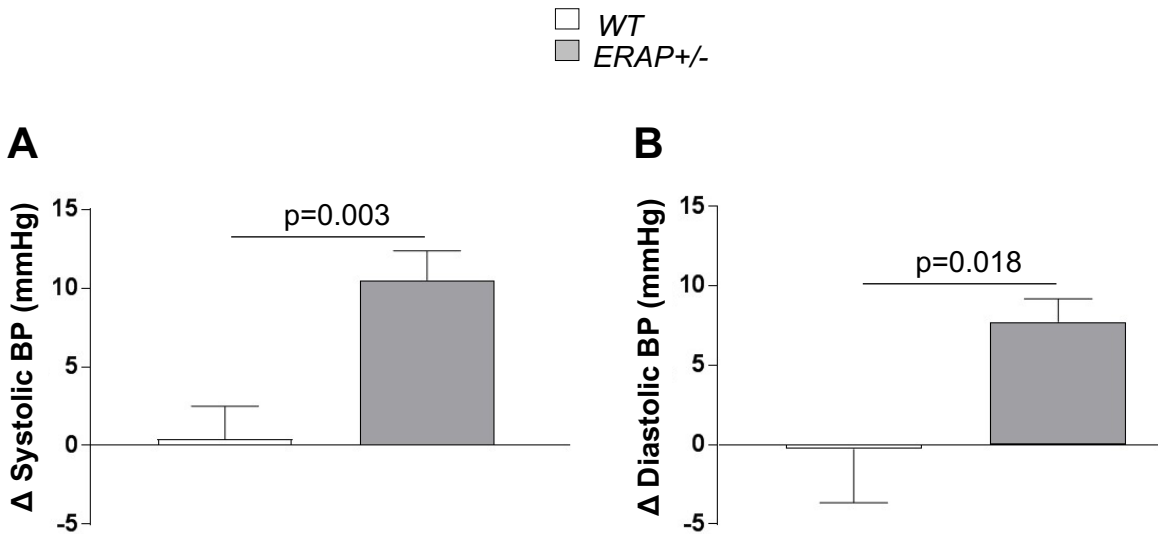
Supplementary Table 1. Characteristics of Endoplasmic reticulum amino peptidase-1-deficient (ERAP1+/-) and Wild-type (WT) littermate mice on liberal and restricted salt diets. Mice were studied between 18-21 weeks of age. Data are means ±SEM. Aldosterone (ALDO), Potassium (K+), Sodium (Na+), Day (d).



Supplemental Figure 1. Endoplasmic reticulum amino peptidase-1 (ERAP1) mRNA levels are reduced in aortas from ERAP1 deficient (ERAP1^{+/-}) mice compared to wild-type (WT) littermate control mice. ERAP1 mRNA levels were determined by RT-PCR from aortas as described in Methods. Bars display mean \pm SEM; p value was calculated using two-tailed student t test.



Supplemental Figure 2. Endoplasmic reticulum amino peptidase-1 (ERAP1) protein levels are reduced in spleens from ERAP1 deficient (ERAP1+/-) mice compared to wild-type (WT) littermate control mice. Western blot and representative optical densitometry of spleen, normalized to β -actin. Bars display mean \pm SEM; p value was calculated using two-tailed student t test.



Supplementary Figure 3. Salt sensitivity of blood pressure (BP) in unrestrained WT and ERAP1^{+/-} mice measured using telemetry device implanted in the aortic arch.

A) Salt Sensitivity of BP is estimated from change in systolic BP (Δ systolic BP = SBP on 1.6% Na⁺ minus SBP on 0.03% Na⁺) **B)** change in diastolic BP (Δ diastolic BP = DBP on 1.6% Na⁺ minus SBP on 0.03% Na⁺)(replicates: WT n=7, ERAP1^{+/-} n=13, * p <0.02, p value shows two-tailed student t test.)

Tissue	Normalized Effect Size	p - Value
Tibial Artery	-0.32	8.0e-12
Aorta	-0.40	8.9e-11
Adrenal gland	-0.47	1.2e-12
Coronary Artery	-0.42	0.0000039

Supplementary Table 2. Effect size per *ERAP1* rs30187 allele for reducing *ERAP1* mRNA expression using GTEx Analysis V7 and dbGaP Accession phs000424.v7.p2, February 28, 2019.