

## SLUG and QKI in breast cancer

**Supplementary Table 1.** Survival analysis of SLUG in BC patients from K-M Plotter

SNAI2	High/Low	P value	95% CI
RFS	1975/1976	0.3	1.06 (0.95-1.18)
OS	701/701	0.35	0.9 (0.73-1.12)
DMFS	870/876	0.22	1.13 (0.93-1.37)
PPS	206/208	0.27	0.87 (0.69-1.11)

**Supplementary Table 2.** Correlation of QKI mRNA expression and clinical survival of breast cancer patients with different clinicopathologic factors (from Kaplan-Meier Plotter) (Overall Survival)

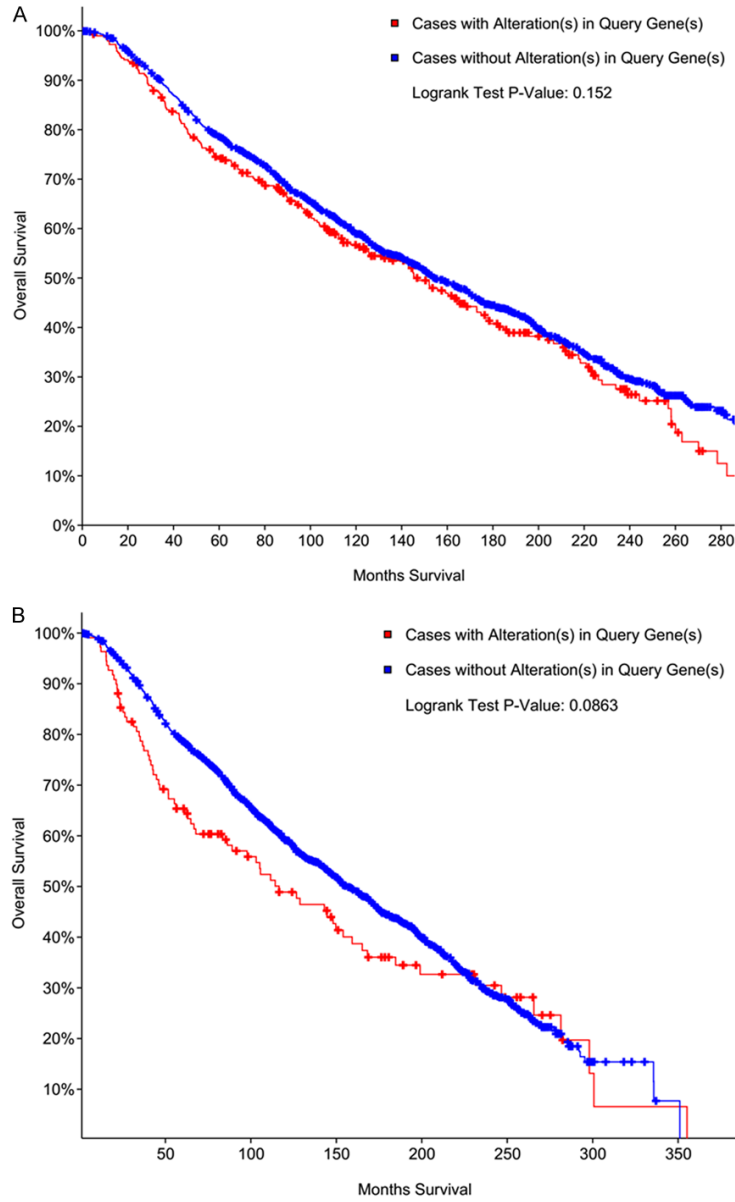
Subgroup analysis	Patient number	HR (95% CI)	P value
<b>Nodal status</b>			
Negative	297/297	1.25 (0.86-1.81)	0.25
Positive	157/156	0.92 (0.62-1.36)	0.68
<b>Grade</b>			
I	81/80	0.7 (0.27-1.8)	0.46
II	193/194	0.91 (0.59-1.41)	0.67
III	251/252	1.24 (0.89-1.72)	0.21
<b>ER</b>			
Negative	125/126	1.16 (0.74-1.84)	0.51
Positive	274/274	1.29 (0.9-1.85)	0.17
<b>PR</b>			
Negative	45/44	0.9 (0.35-2.27)	0.82
Positive	41/42	0.96 (0.26-3.62)	0.96
<b>HER2</b>			
Negative	65/65	0.78 (0.33-1.83)	0.56
Positive	64/65	1.45 (0.7-2.99)	0.31

**SupplementaryTable 3.** Different QKI probes and the corresponding survival analysis result from K-M Plotter

AFFY ID	RFS p value	No. of patients high/low	OS p value	No. of patients high/low	DMFS p value	No. of patients high/low	PPS p value	No. of patients high/low
212265_at	0.019*	1975/1976	0.035*	700/702	0.061	873/873	0.00082*	207/207
236154_at	2e-05*	864/900	0.36	305/321	0.94	324/340	0.51	87/86
212263_at	0.77	1972/1979	0.52	701/701	0.87	873/873	0.18	207/207
212636_at	0.11	1973/1978	0.3	700/702	0.17	873/873	0.35	207/207
1555154_a_at	0.76	467/510	0.9	314/314	0.048*	331/333	0.85	87/86
212262_at	0.19	1973/1978	0.16	701/701	0.32	870/876	0.18	207/207
214541_s_at	0.0036*	1773/2178	0.33	669/733	0.95	825/921	0.81	193/221
214543_x_at	0.013*	1974/1977	0.53	700/702	0.67	870/876	0.78	207/207
228540_at	5.1e-06*	880/884	0.87	313/313	0.59	328/326	0.17	85/88

\*P < 0.05. P value in blue color means higher QKI mRNA expression was related to better prognosis; P value in red color means high QKI mRNA expression was related to worse prognosis.

# SLUG and QKI in breast cancer



**Supplementary Figure 1.** Kaplan-Meier overall survival analysis of patients with or without gene alterations of (A) SLUG or (B) QKI.