

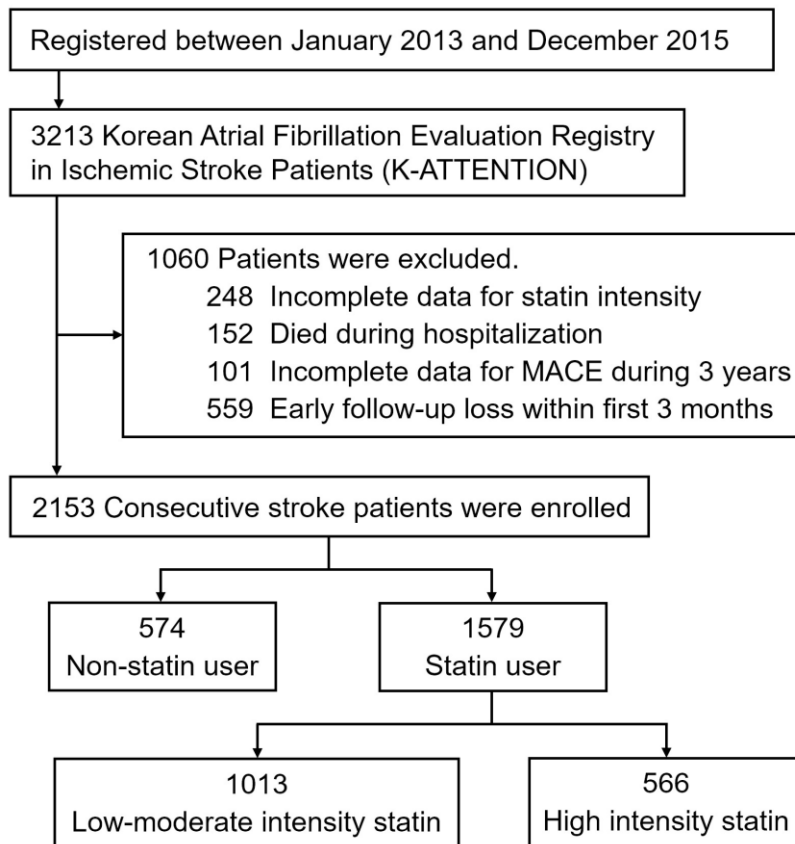
SUPPLEMENTAL MATERIAL

Table S1. Event rates and association estimates from Cox proportional hazards modeling according to statin intensity.

Clinical outcomes	No statin (n=574)	Statin groups (vs No statin group)			HI group (vs LMI)	
		LMI statin (n=1,013)	HR (95% CI); <i>p</i> value	HI statin (n=566)	HR (95% CI); <i>p</i> value	HR (95% CI); <i>p</i> value
Primary outcome						
Net adverse clinical and cerebral events			0.65 (0.53–0.78); <0.001		0.49 (0.38–0.63); <0.001	0.75 (0.59–0.96); 0.021
Number of events	185	232		97		
Incidence per 100 person-years	24.56	15.52		11.92		
Secondary outcomes						
Death from any cause			0.59 (0.47–0.73); <0.001		0.43 (0.32–0.58); <0.001	0.73 (0.55–0.97); 0.034
Number of events	149	167		68		
Incidence per 100 person-years	18.44	10.59		7.95		
Any stroke			0.88 (0.61–1.27); 0.506		0.73 (0.47–1.14); 0.169	0.83 (0.55–1.23); 0.364
Number of events	45	77		35		
Incidence per 100 person-years	5.86	5.13		4.27		
Recurrent ischemic stroke			0.89 (0.59–1.35); 0.899		0.71 (0.43–1.17); 0.180	0.79 (0.50–1.24); 0.308
Number of events	36	63		27		
Incidence per 100 person-years	4.65	4.17		3.29		
Intracranial hemorrhage			1.66 (0.70–3.88); 0.243		1.37 (0.52–3.60); 0.522	0.82 (0.39–1.75); 0.624
Number of events	7	22		10		
Incidence per 100 person-years	0.87	1.42		1.19		
Acute coronary syndrome			1.06 (0.57–1.95); 0.852		0.88 (0.42–1.83); 0.740	0.83 (0.44–1.56); 0.568
Number of events	15	31		14		
Incidence per 100 person-years	1.89	2.01		1.68		
Major bleeding			0.24 (0.10–0.60); 0.002		0.45 (0.18–1.10); 0.081	1.82 (0.64–5.20); 0.260
Number of events	15	7		7		
Incidence per 100 person-years	1.88	0.45		0.83		

LMI = low to moderate intensity; HR = hazard ratio; CI = confidence interval; HI = high intensity.

Figure S1. Study population enrollment flow.



MACE = major adverse cerebro/cardiovascular events.