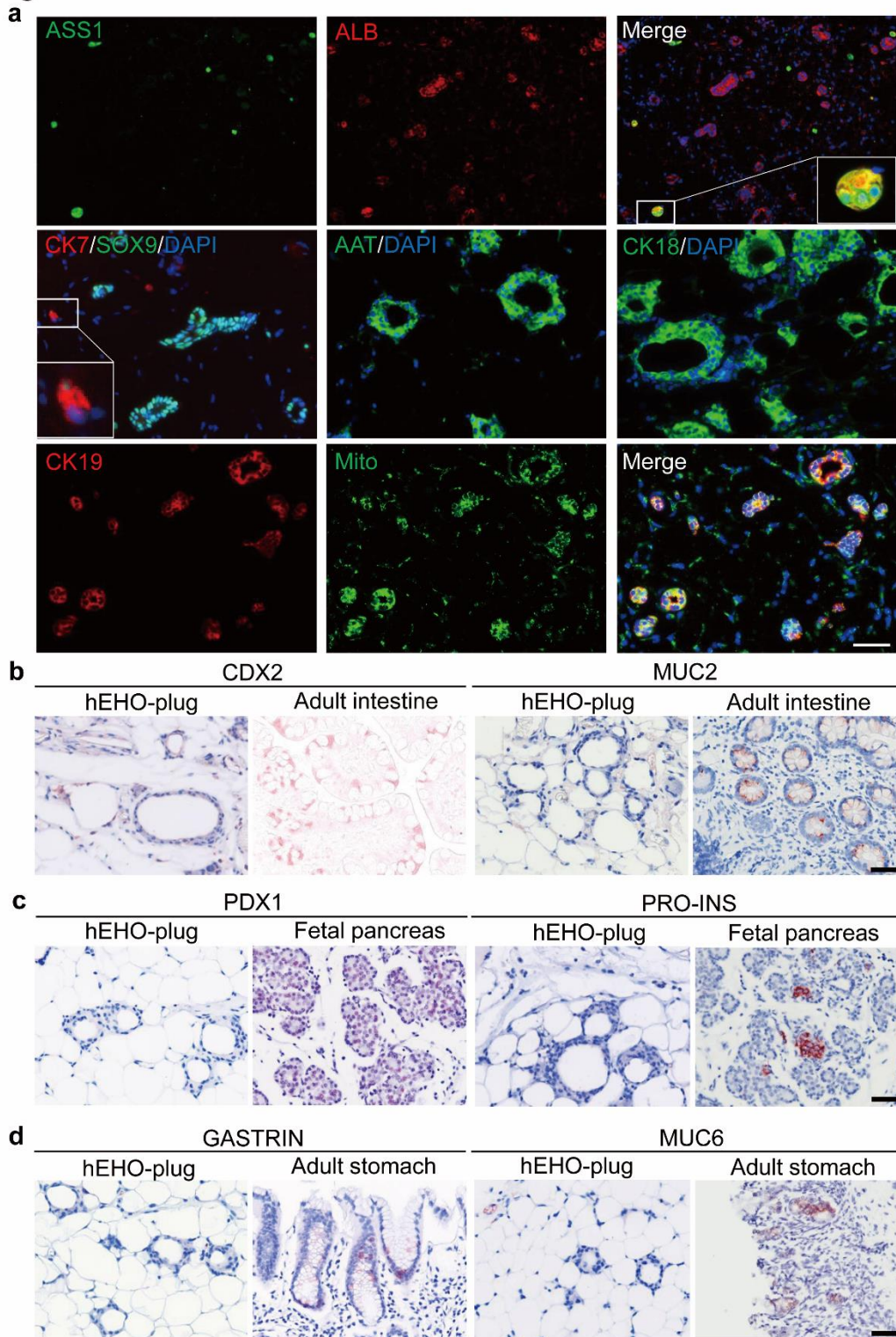


Fig. S4



Supplementary information, Fig. S4 hEHOs do not give rise to intestinal, pancreatic or gastric outgrowth *in vivo*, related to Fig.3. (a) Immunofluorescence stainings for hepatic markers (ASS1, CK18, ALB and AAT), cholangiocytes markers (CK19, CK7 and SOX9) and human mitochondria (by Mito antibody) in the hEHO-derived grafts. Boxed areas are magnified in insets. (b-d) Immunohistochemistry for intestinal markers CDX2, MUC2 in the plug in epididymal fat pad and human adult intestine (b), pancreatic markers PDX1, PRO-INS in the plug in epididymal fat pad and human fetal pancreas (c), and gastric markers GASTRIN, MUC6 (d) in the plug in epididymal fat pad and human adult stomach. Scale bar: 50µm.