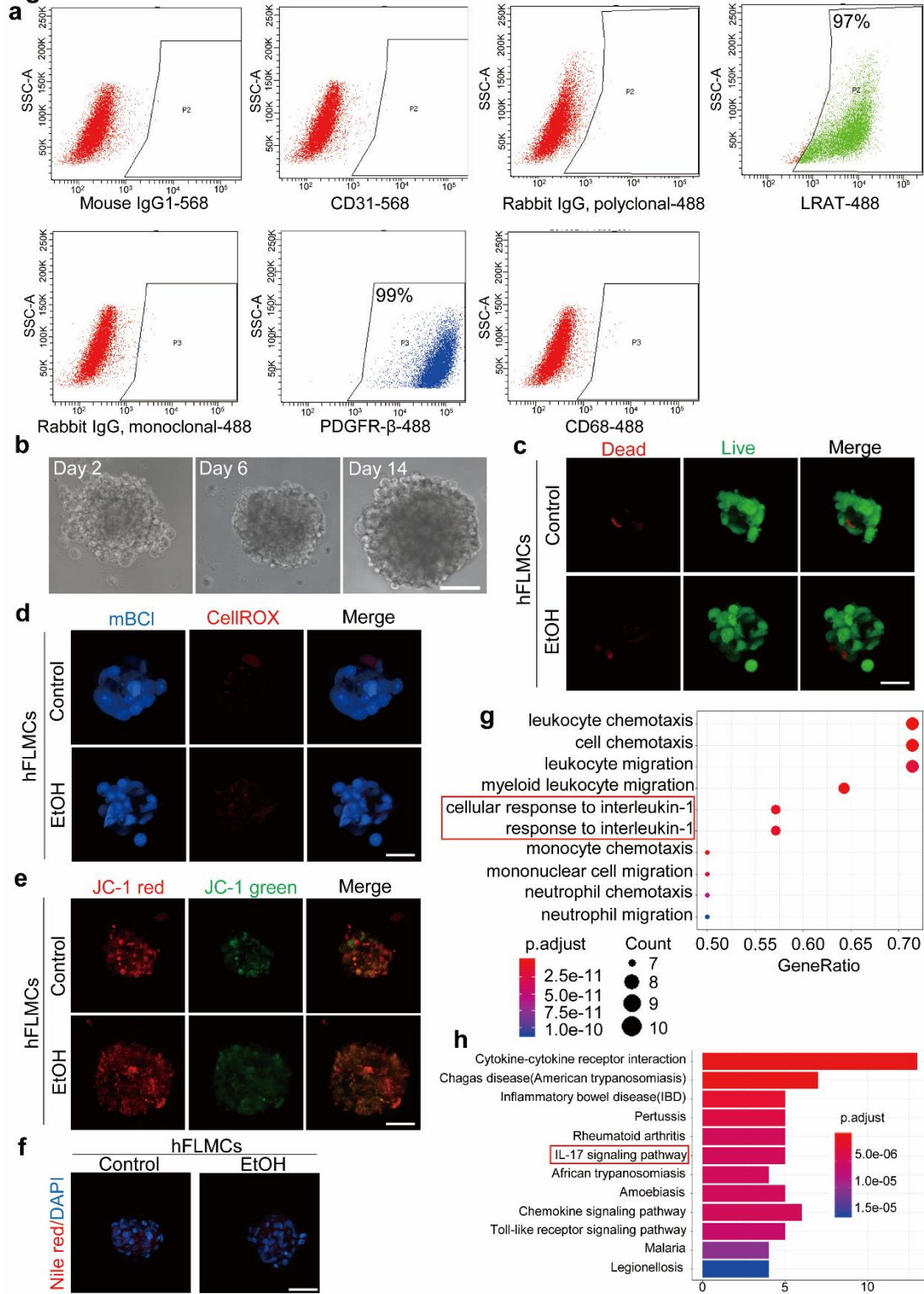


**Fig. S9**



**Supplementary information, Fig. S9 hFLMC/hEHO organoid modeling ethanol-induced liver injury, related to Fig.7 and 8.** (a) hFLMCs were assayed for sinusoidal endothelial cell marker CD31, liver kupffer cell marker CD68, and hepatic stellate cell markers PDGFR-  $\beta$ , LRAT by flow cytometry. (b) Representative bright-field pictures of hFLMC/hEHO co-culture at different time point. (c-f) Assessment of cell viability(c), oxidative stress (d), mitochondrial membrane potential (e) and steatosis (f) in hFLMCs at day 7 after EtOH treatment. (g) Enriched biological processes for genes in EtOH-treated hFLMC/hEHO group versus control group. (h) Selected enriched KEGG pathways of up-regulated genes in EtOH-treated hFLMC/hEHO group versus control group. Scale bar: 50 $\mu$ m.