

The potential of neurofilaments analysis using dry-blood and plasma spots

**Vittoria Lombardi, Daniele Carassiti, Gavin Giovannoni, Ching-Hua Lu, Rocco
Adiutori, Andrea Malaspina**

SUPPLEMENTARY DATA

Figure 1

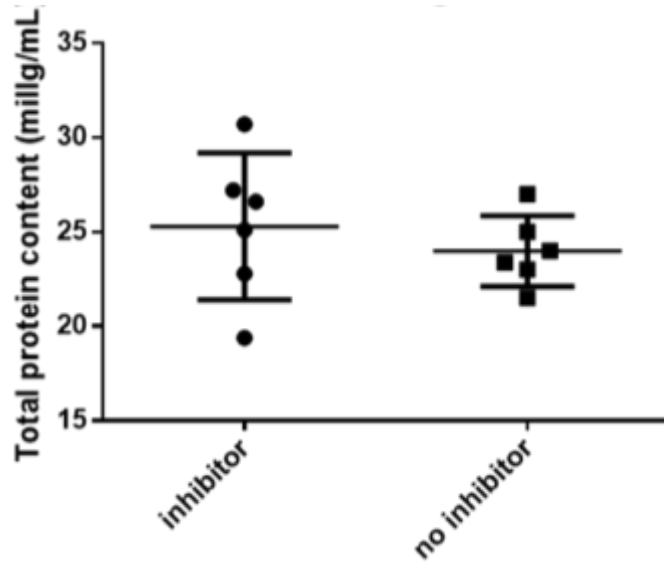


Figure 1 Total protein content in DBS elute of 6 controls with and without proteases inhibitor after 24 hours from the elution. Non-significant differences with t-test (Mann-Whitney test).

Figure 2

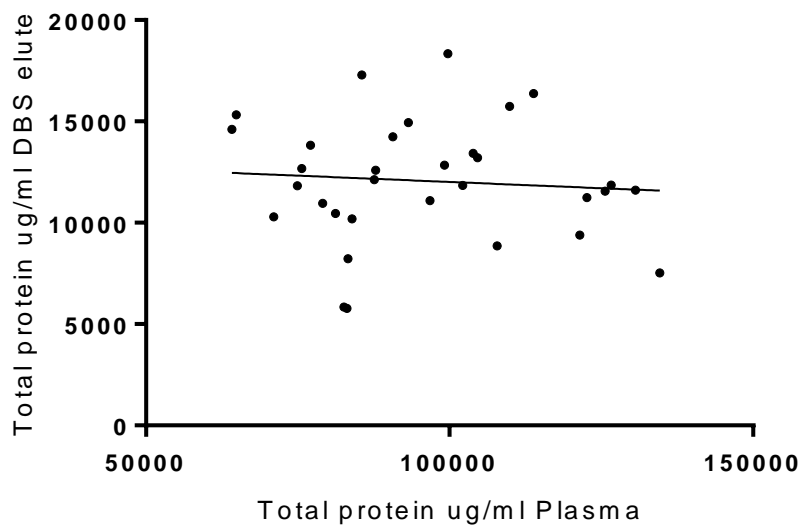


Figure 2 Total protein correlation between Plasma and DBS elute. Non-significant correlation, Pearson analysis, $p=0.6$.

Figure 3

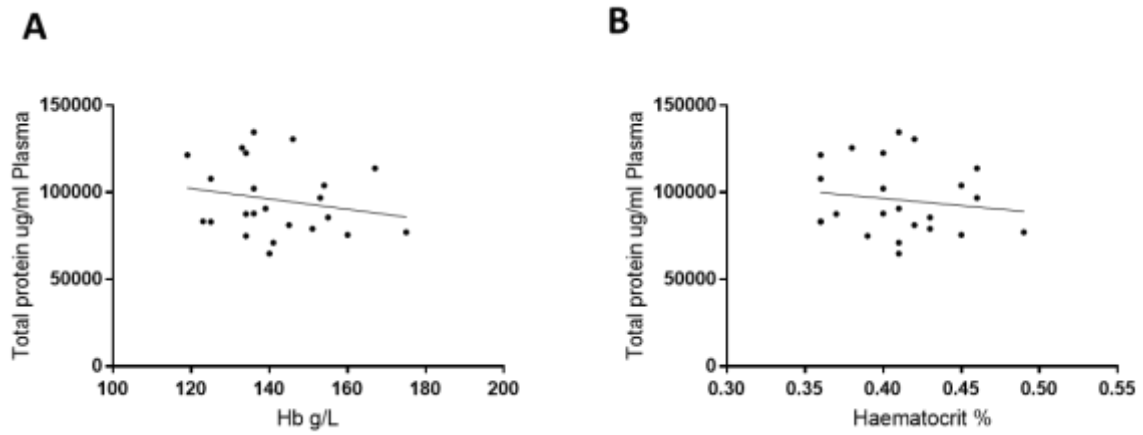


Figure 3 Correlation between Hb/Haematocrit and Total protein in plasma. Non-significant correlation, Pearson analysis. A: $p=0.26$; B: $p=0.4$

Figure 4

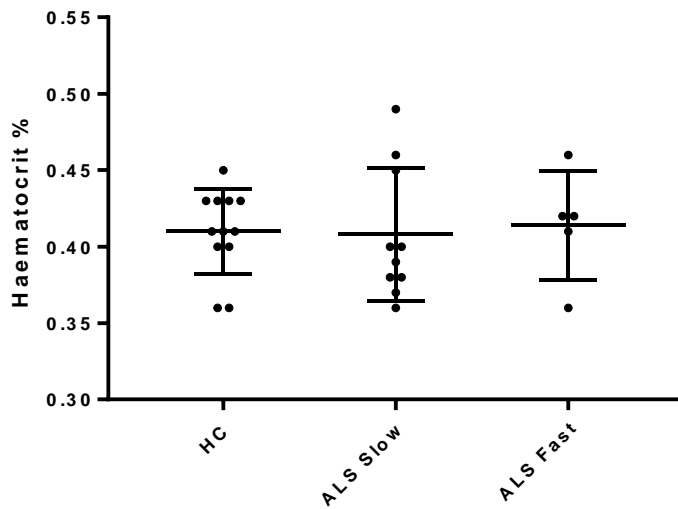


Figure 4 Haematocrit % in HC, slow and fast ALS patients. Non-significant differences with one-way ANOVA test, $p > 0.99$.

SOURCE GEL IMAGES

Figure 4 A

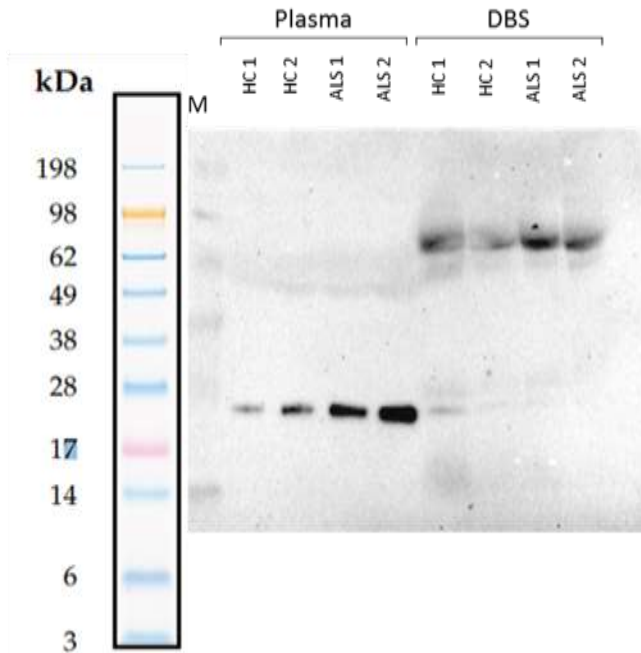
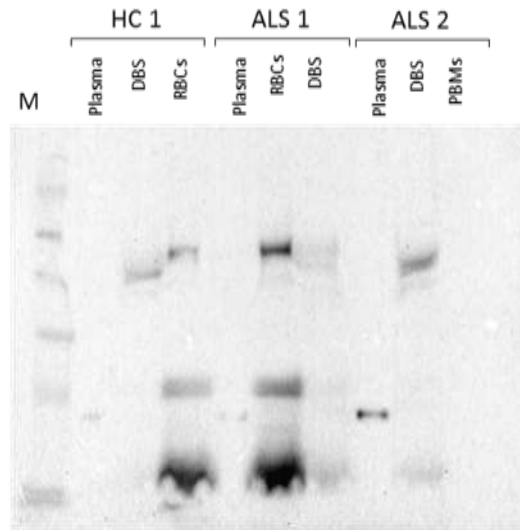


Figure 4 B



Legend: western blot analysis of neurofilament light (NF-L) comparing plasma and elute from DBS obtained from the same blood samples of healthy controls (plasma HC 1, 2; DBS HC 1, 2) and ALS individuals (plasma ALS 1, 2; DBS ALS 1, 2 - Figure 4 A). NF-L expression is also shown in plasma, DBS elutes, red blood cells (RBCs) and polymorphonuclear cells (PBMCs) obtained from blood samples of the same control and ALS individuals (HC1 and ALS 1 and 2 - Figure 4B). In the manuscript, only the gel lanes where ALS1 blood products were loaded are reported in Figure 4 B.

Marker (M): SeeBlue® Plus2 Cat. PLC5925

Figure 4 A

ChemiDoc XRS+ imaging system

Software: Image Lab 5.2.1

Exposure: 122 sec

Figure 4 B

ChemiDoc XRS+ imaging system

Software: Image Lab 5.2.1

Exposure: 412.4 sec