

## Supplementary Information

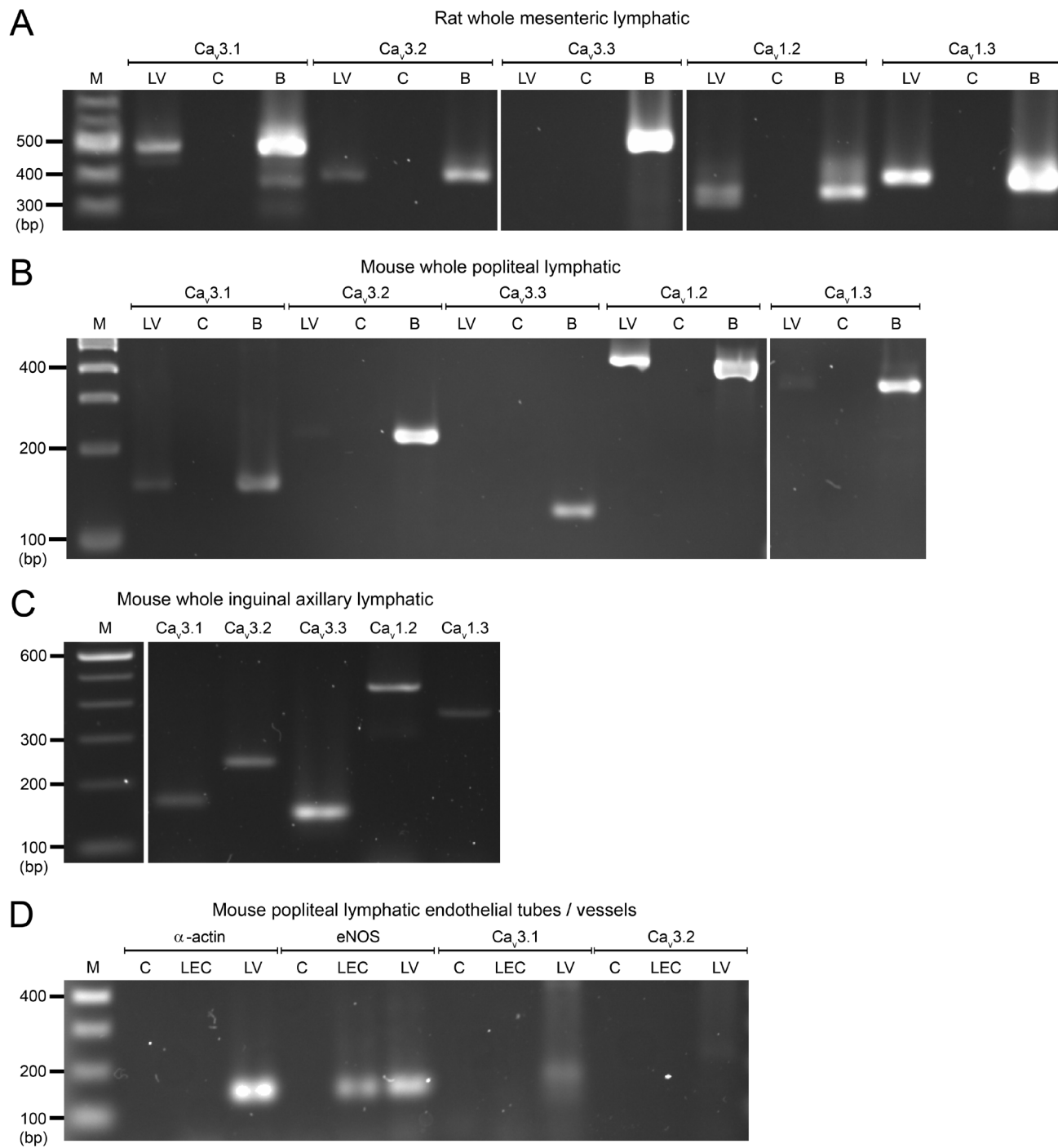
### **T-type, but not L-type, voltage-gated calcium channels are dispensable for lymphatic pacemaking and spontaneous contractions**

Kim H. T. To, Peichun Gui, Min Li, Scott D. Zawieja, Jorge A. Castorena-Gonzalez, and Michael J. Davis

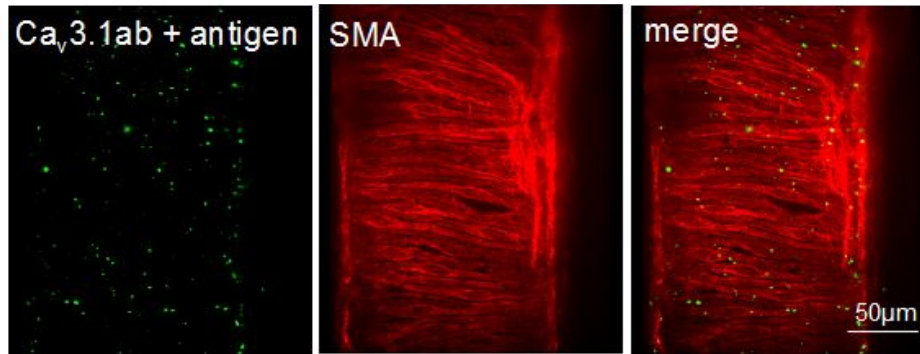
Department of Medical Pharmacology and Physiology, University of Missouri School of Medicine, Columbia, Missouri 65212

#### Contents:

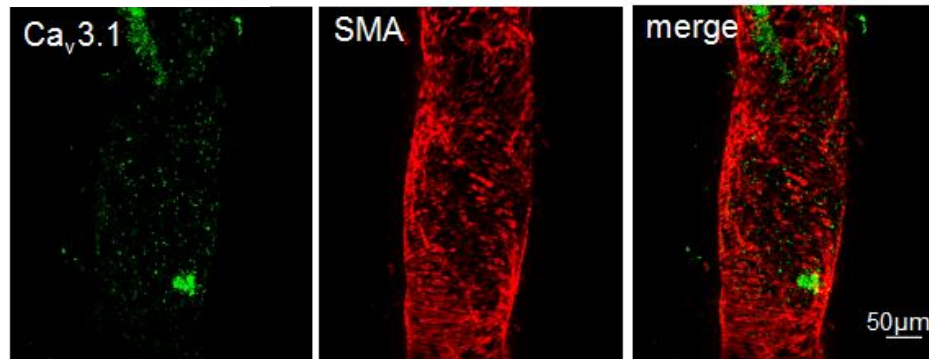
1. Supplemental Figures S1-S13.
2. Supplemental Figure legends.

**Figure S1**

**A** WT IAL pretreated with antigenizing peptide for  $Ca_v3.1$  antibody



**B** Cav3.1<sup>-/-</sup> IAL



**C** WT mesenteric artery

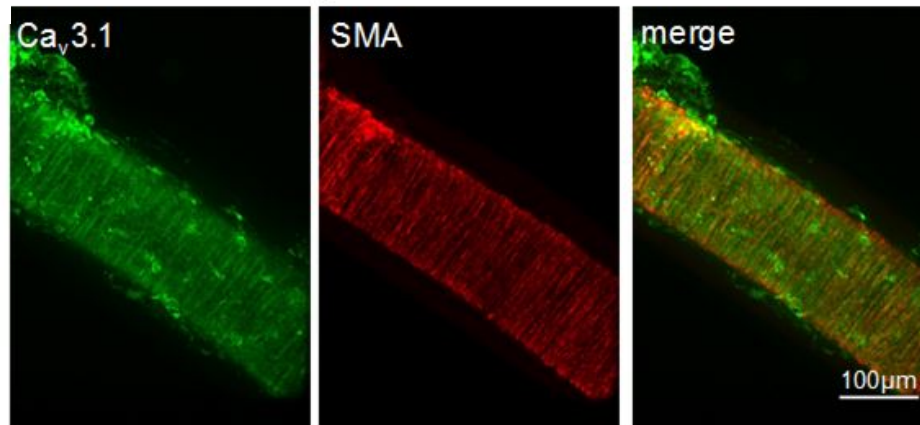
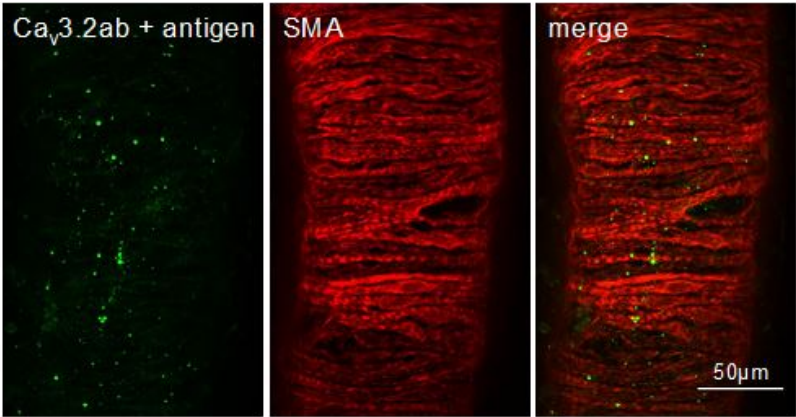
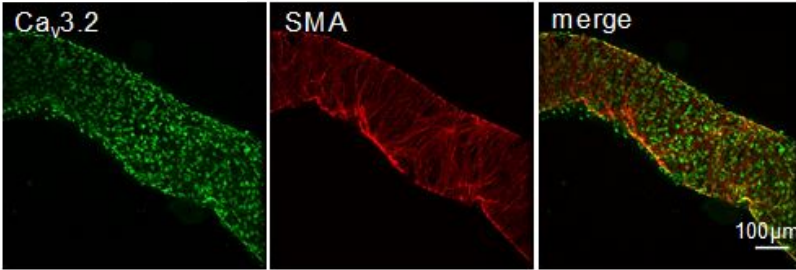


Figure S3

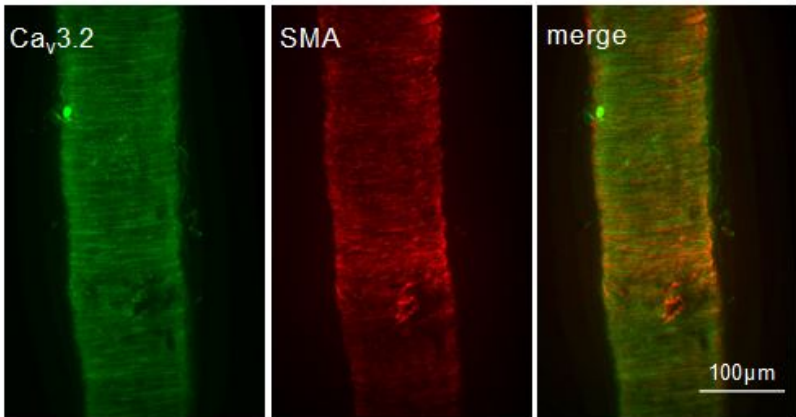
**A** WT IAL pretreated with antigenizing peptide for Ca<sub>v</sub>3.2 antibody



**B** Cav3.2<sup>-/-</sup> IAL



**C** WT mesenteric artery



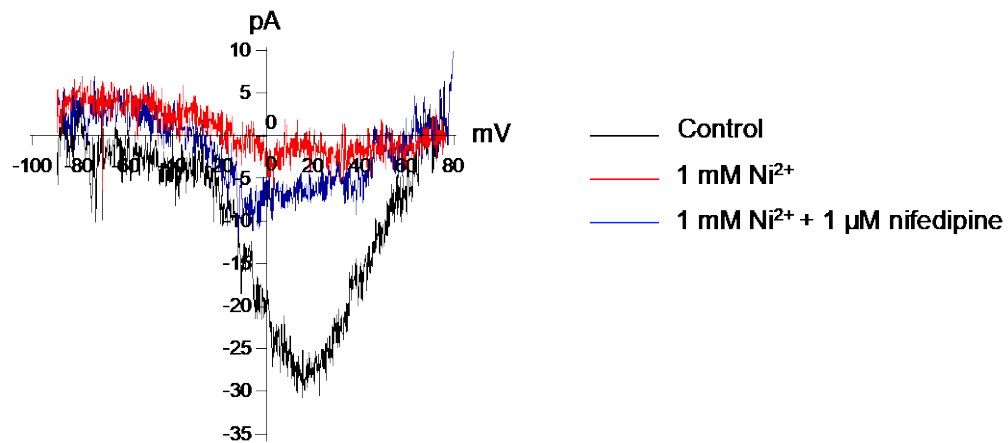
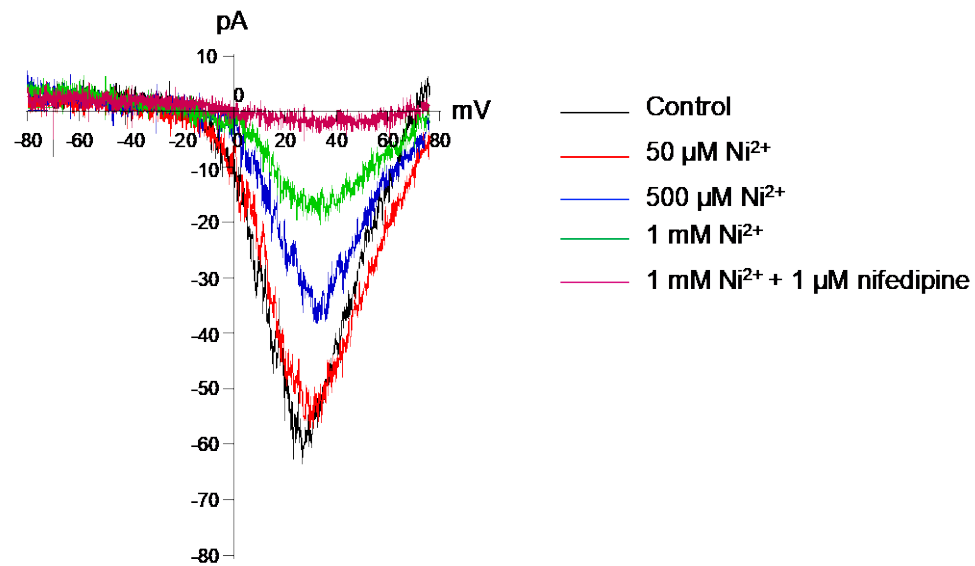
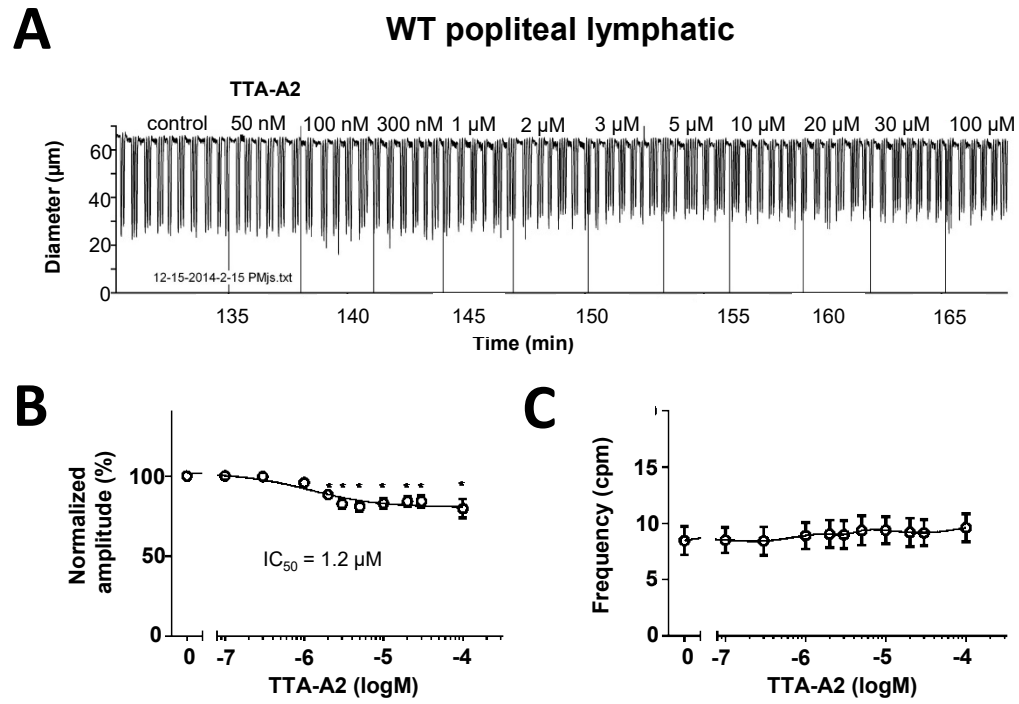
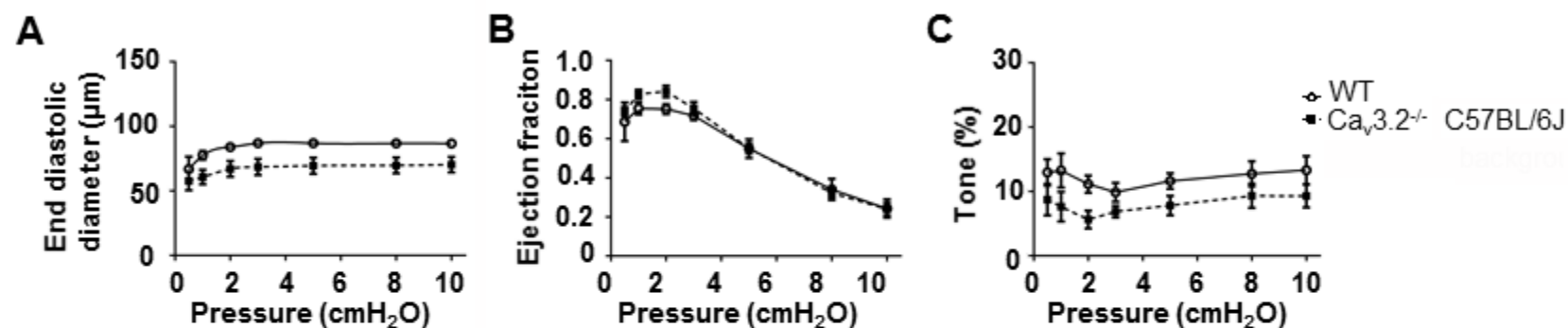
**A** Ni<sup>2+</sup>-sensitive VGCC current in mouse popliteal LSMC**B** Ni<sup>2+</sup>-sensitive VGCC current in rat mesenteric LSMC

Figure S5



## PL pressure-contraction response



## IAL pressure-contraction response

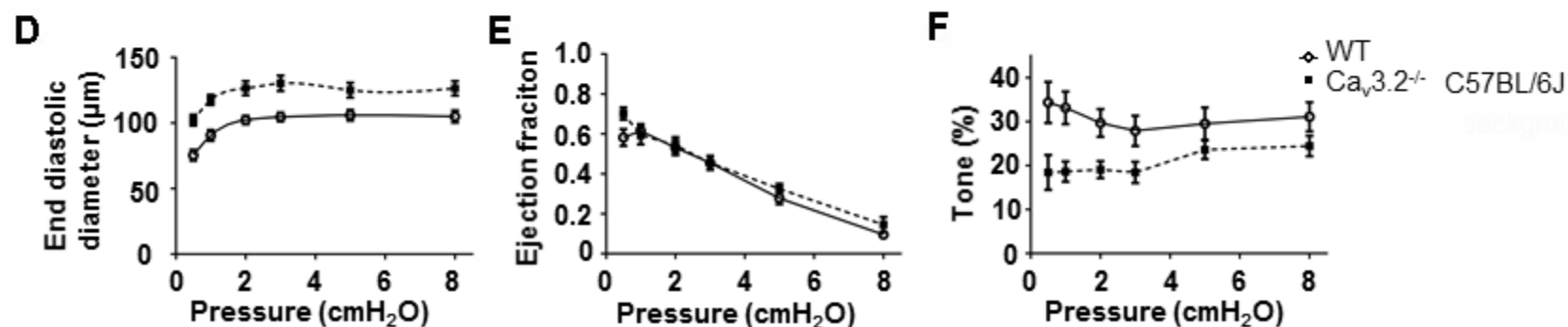
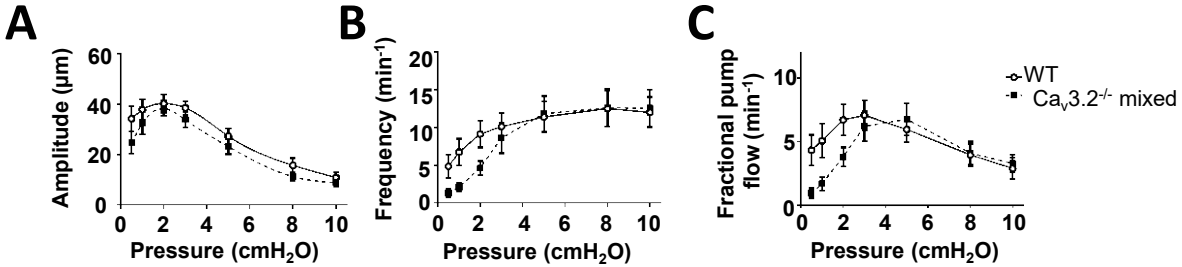


Figure S7

Pressure-contraction response (PL Cav3.2<sup>-/-</sup> mixed)



Acetylcholine dose-response inhibition (PL Cav3.2<sup>-/-</sup> mixed)

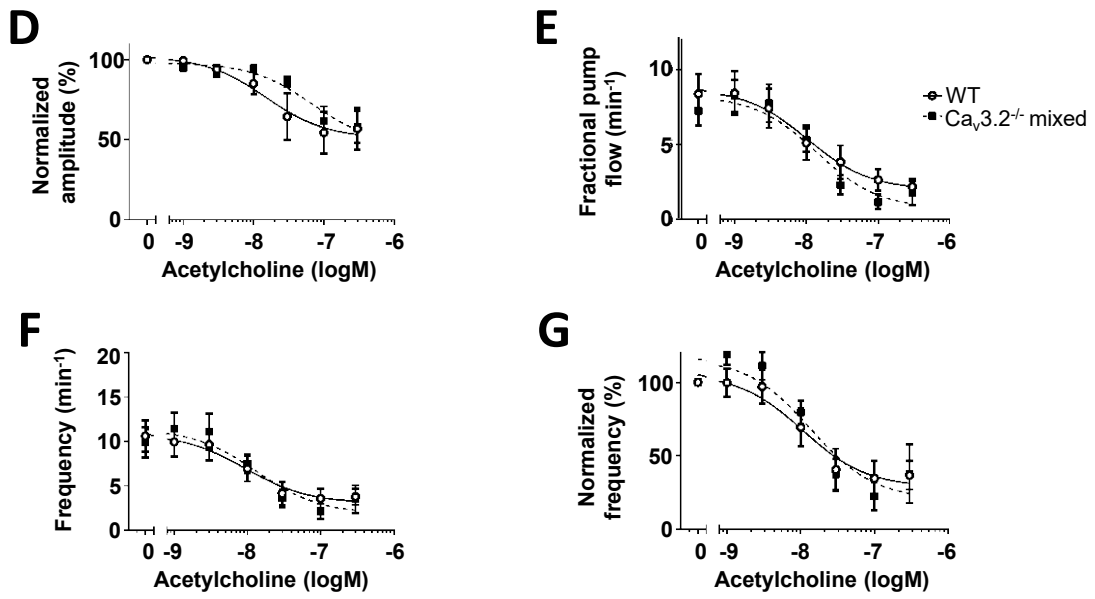
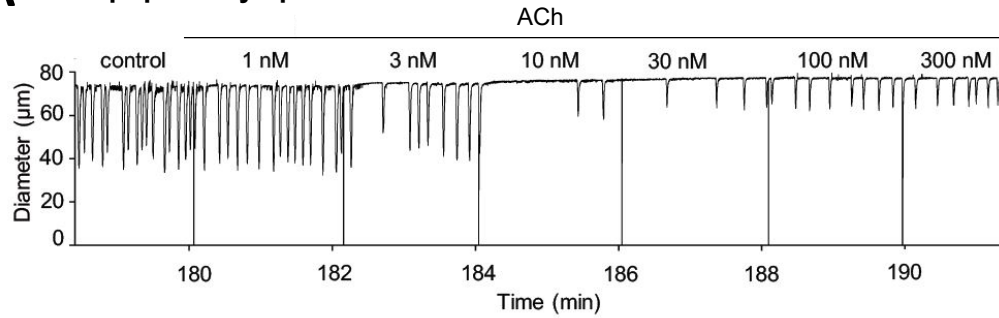


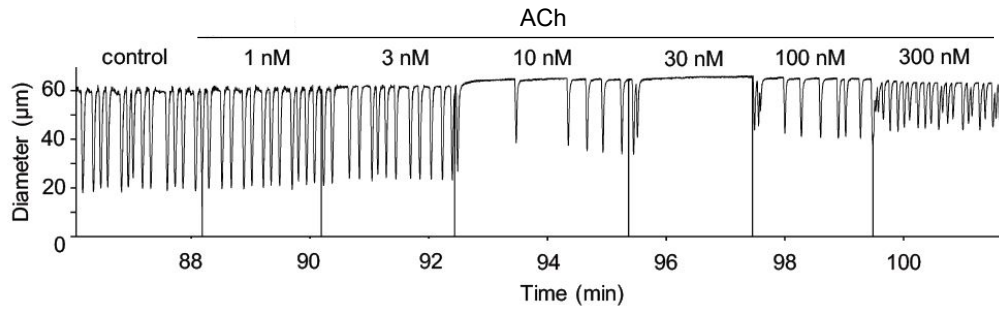


Figure S8

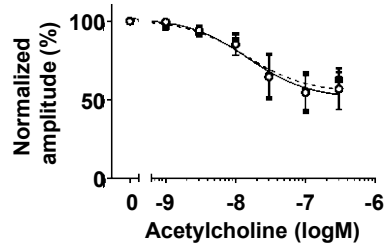
**A** WT popliteal lymphatic



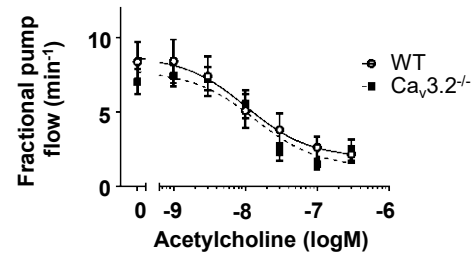
**B**  $Ca_v3.2^{-/-}$  popliteal lymphatic



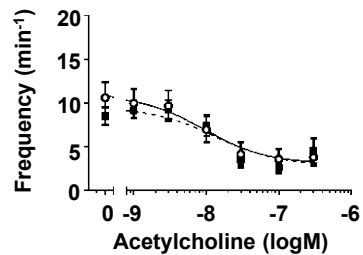
**C**



**D**



**E**



**F**

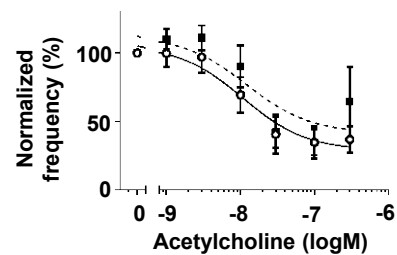
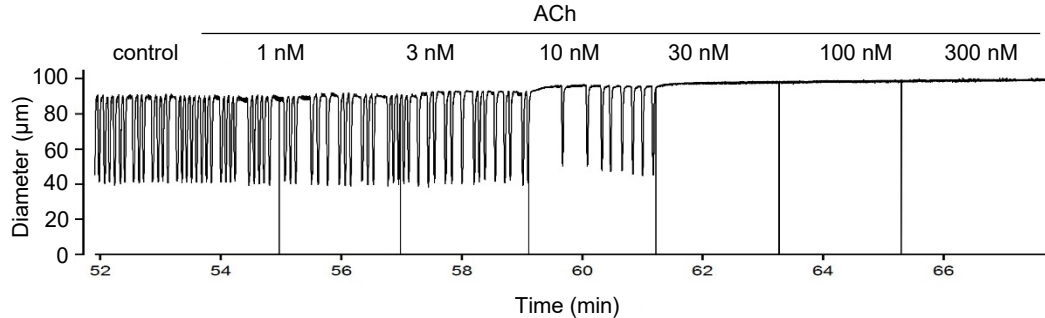
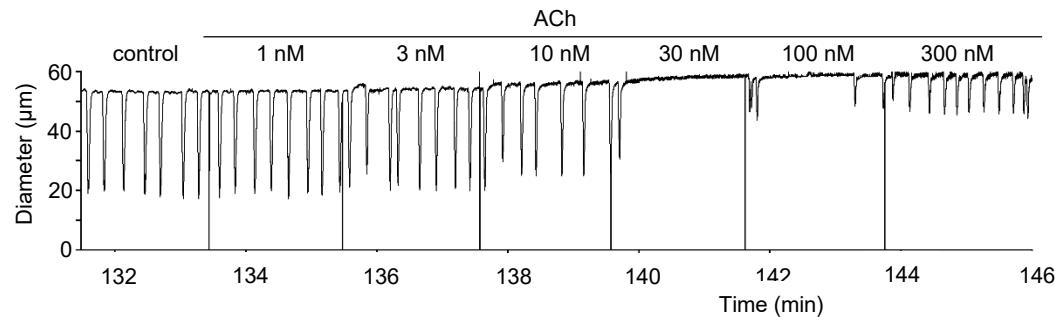


Figure S9

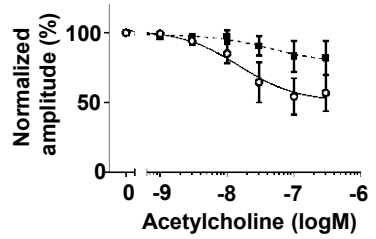
**A** WT popliteal lymphatic



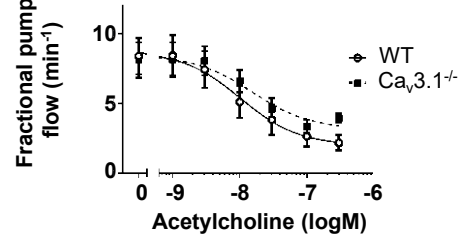
**B** Ca<sub>v</sub>3.1<sup>-/-</sup> popliteal lymphatic



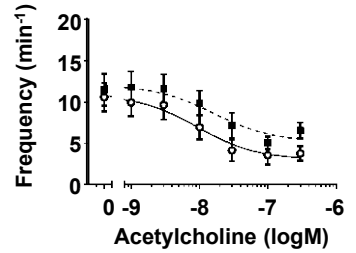
**C**



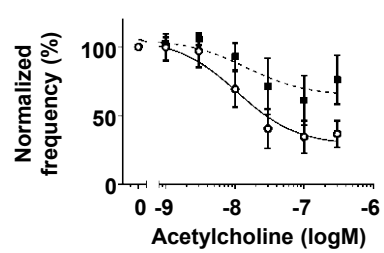
**D**

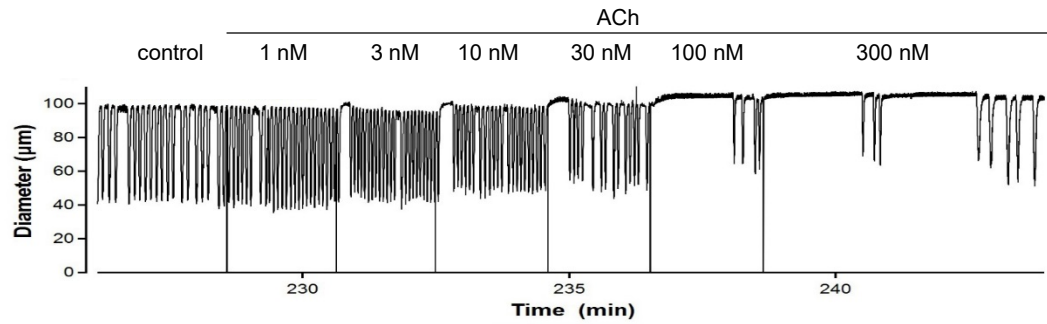
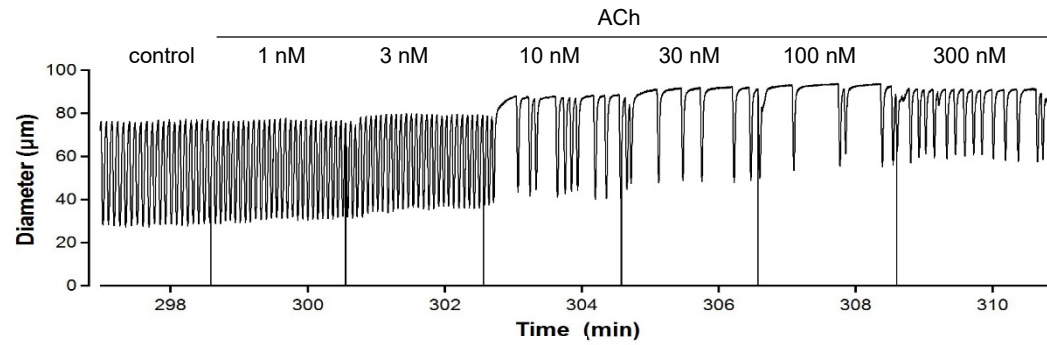
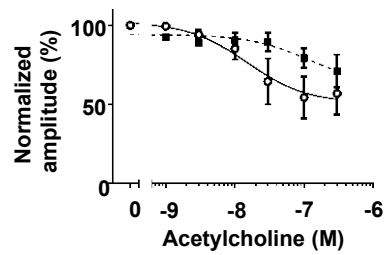
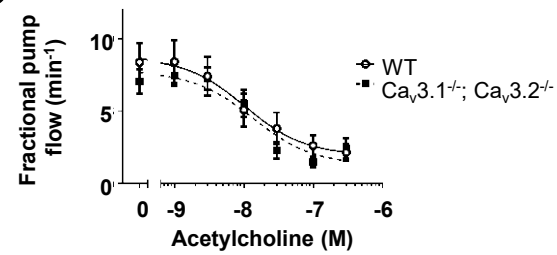
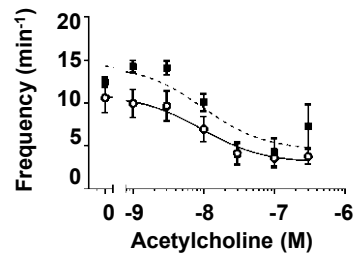
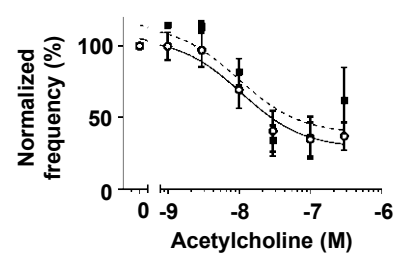


**E**



**F**



**A** WT popliteal lymphatic**B**  $Ca_v3.1^{-/-}; Ca_v3.2^{-/-}$  popliteal lymphatic**C****D****E****F**

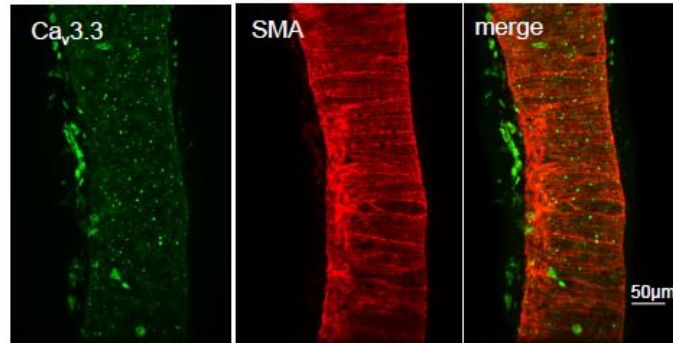
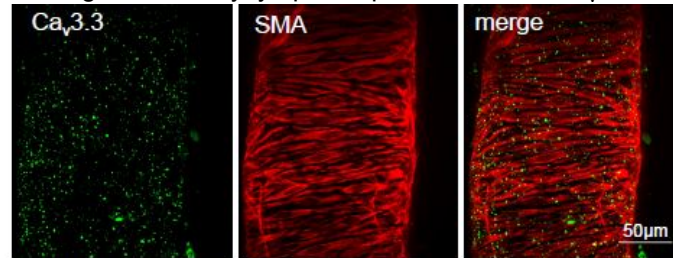
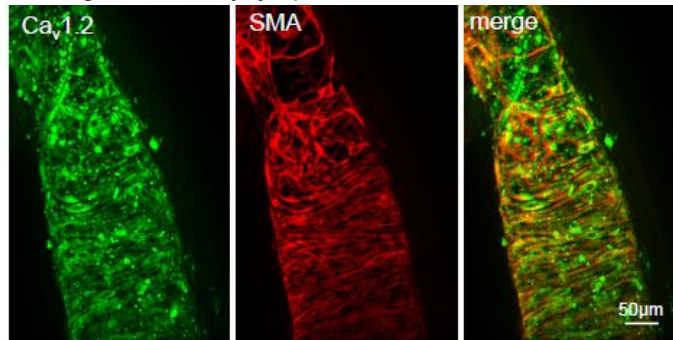
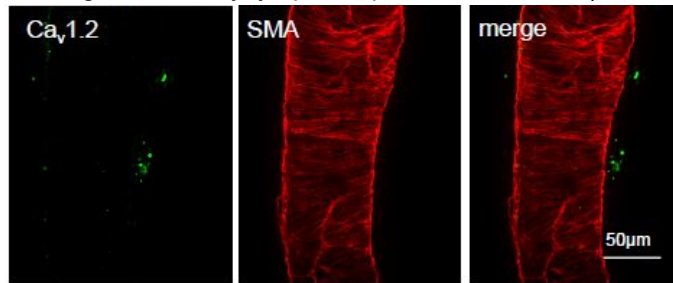
**A** WT inguinal-axillary lymphatic**B** WT inguinal-axillary lymphatic pretreated with  $Ca_v3.3$  antigenizing peptide**C** WT inguinal-axillary lymphatic**D** WT inguinal-axillary lymphatic pretreated with  $Ca_v1.2$  antigenizing peptide

Figure S12

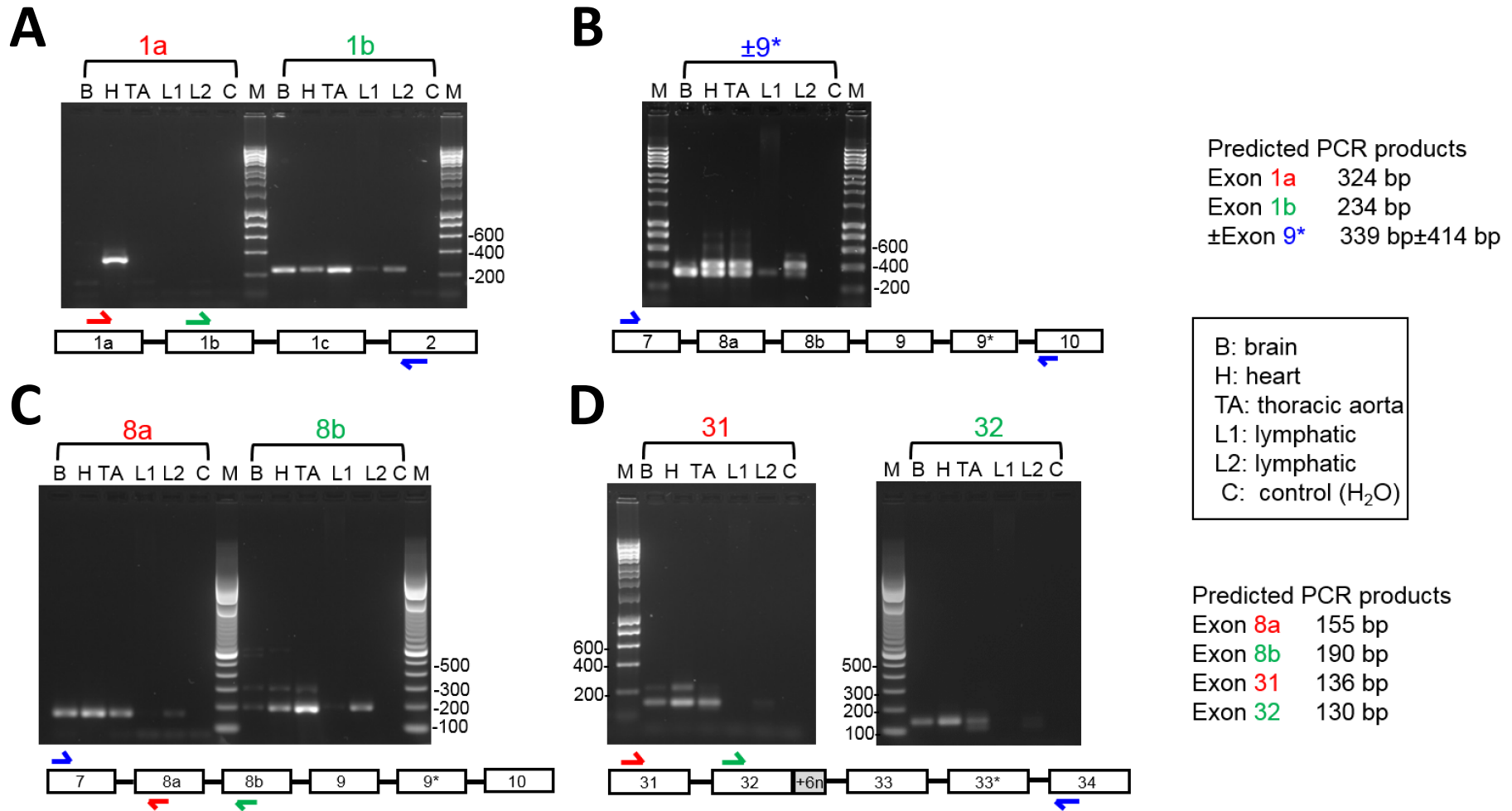


Figure S13

