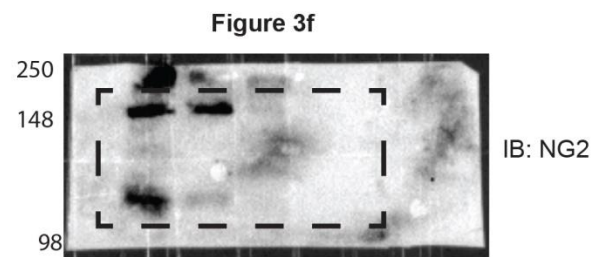
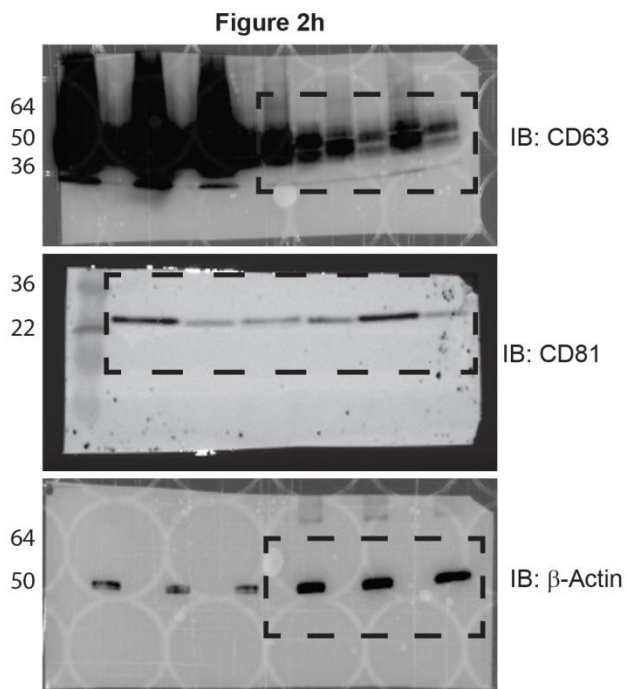
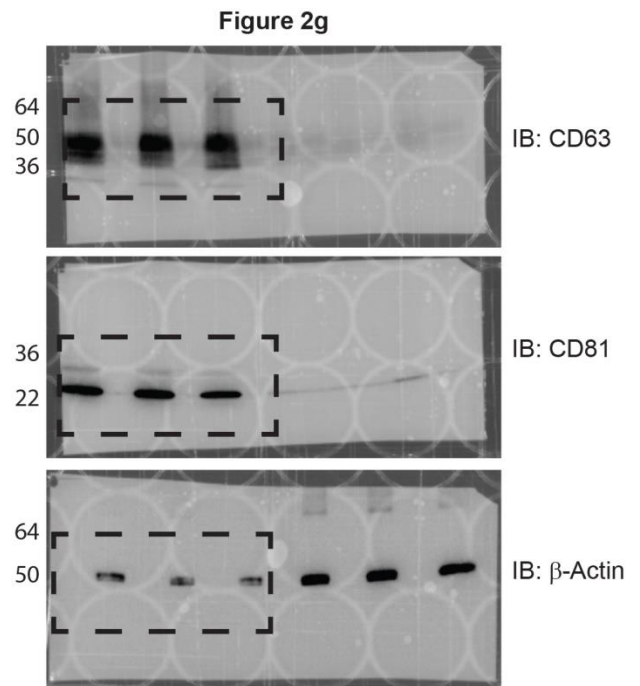
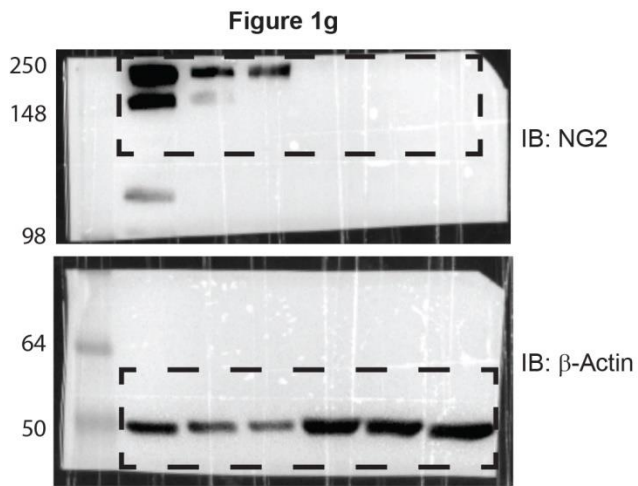


**Supplementary Figure S1.** Flow cytometry analyses of MSC EV. **(a)** Representative flow cytometry density plot showing morphological gate used to select extracellular vesicles for further analysis. **(b)** Representative flow cytometry density plots showing fluorescent signal as detected by APC-A channel for different antigens. The vertical bar marks positivity for APC-A signal.



**Supplementary Figure S2.** Western blot analyses of MSC and MSC EV. Uncropped images of western analysis membranes showed in the specified main figures. Molecular weight marker bands are indicated. IB, immunoblot.