

Diagnosis of Bovine Respiratory Disease in feedlot cattle using blood ¹H NMR metabolomics

C. Blakebrough-Hall^{1*}, *A. Dona*², *M.J. D'occhio*¹, *J. McMeniman*³ and *L.A González*^{1,4}

¹School of Life and Environmental Sciences, Faculty of Science, University of Sydney, Camden, 2570, NSW, Australia

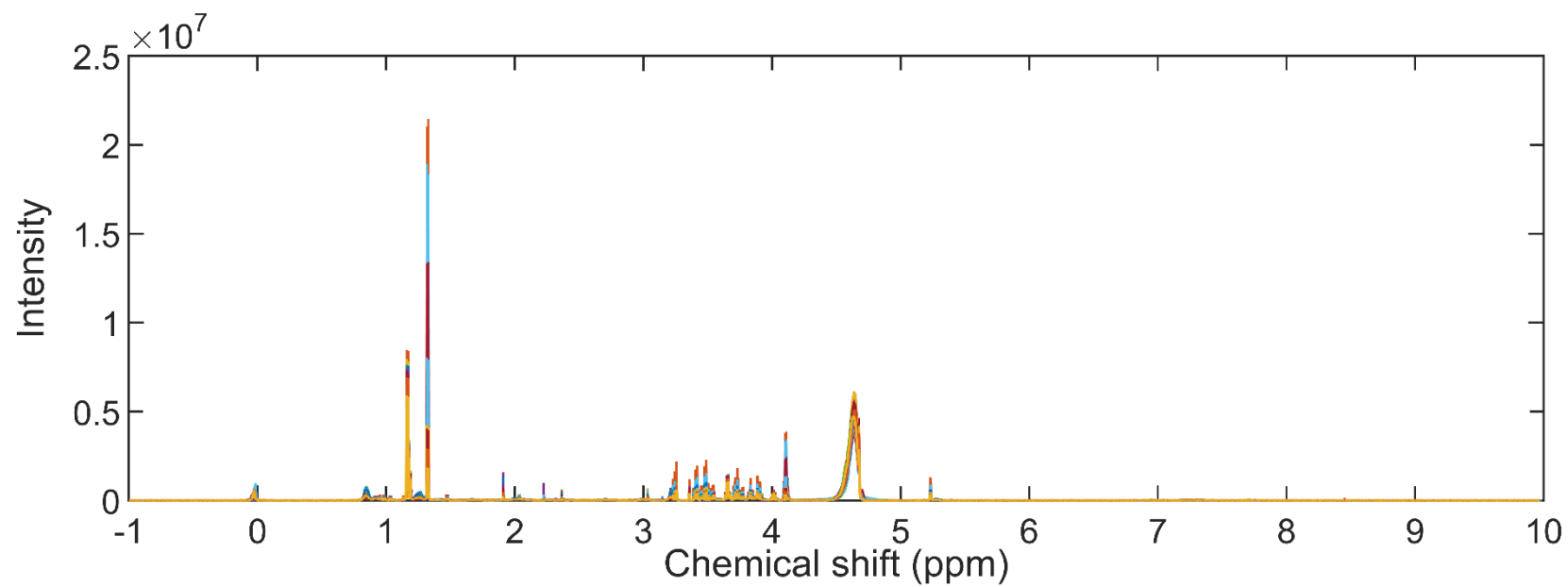
²Kolling Institute of Medical Research, Faculty of Medicine and Health, University of Sydney, St Leonards, 2065, NSW, Australia

³Meat and Livestock Australia, Brisbane, 4006, QLD, Australia

⁴Sydney Institute of Agriculture, University of Sydney, Biomedical Building, Australian Technology Park, 2015, NSW, Australia

Supplementary Information

Supplementary Figure 1. Full spectra before water peak (4.30 to 5.10 ppm) and DSS (4,4-dimethyl-4-silapentane-1-sulfonic acid; -1.00 to 0.52 ppm) truncation. DSS is used for calibration of the NMR.



Supplementary Figure 2. Full spectra after water peak (4.30 to 5.10 ppm) and DSS (-1.00 to 0.52 ppm) truncation.

