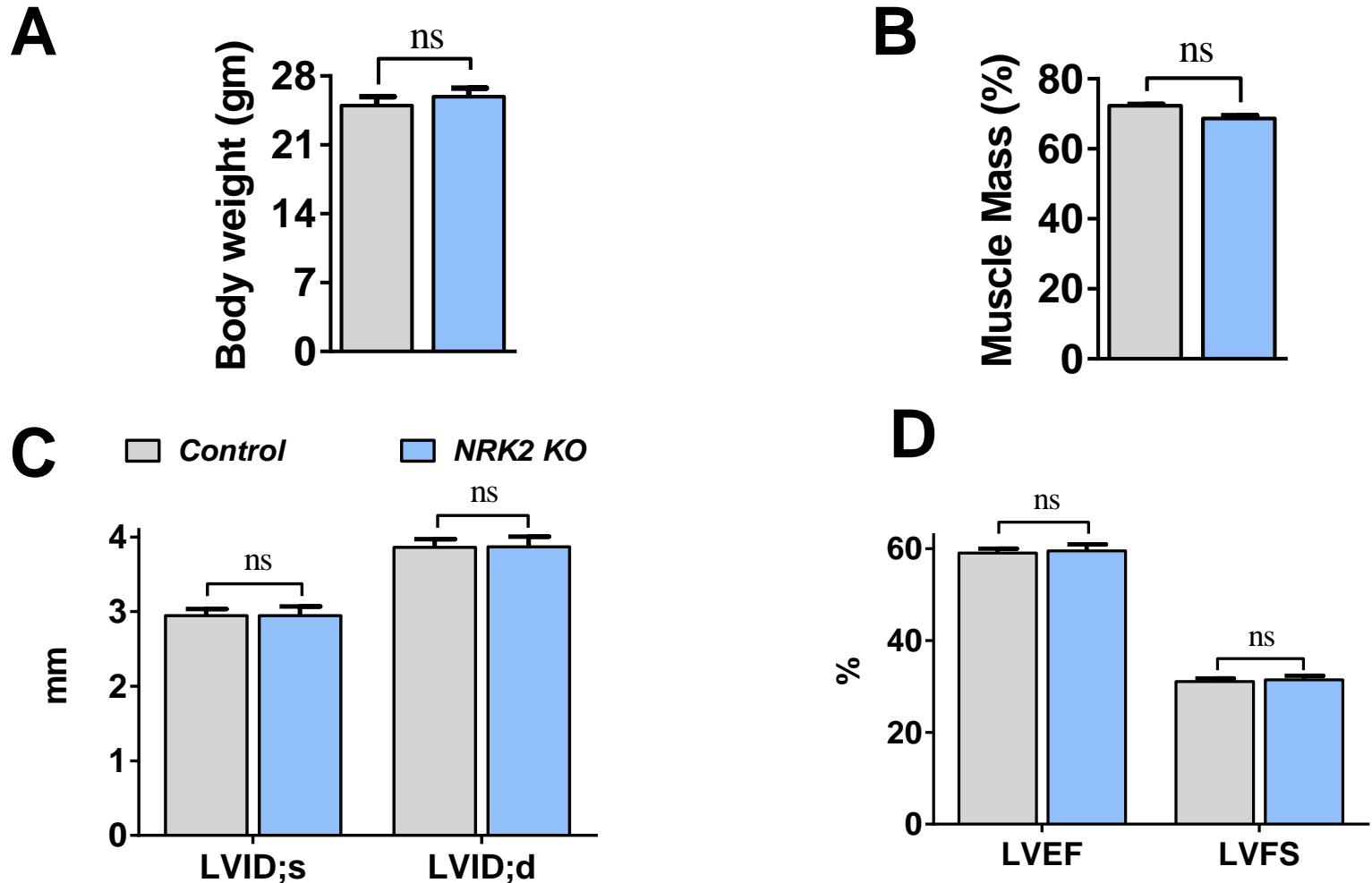
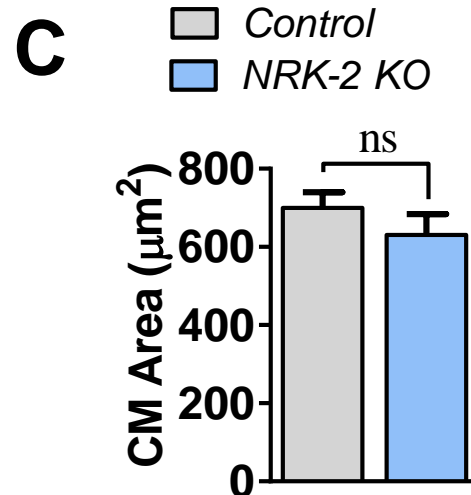
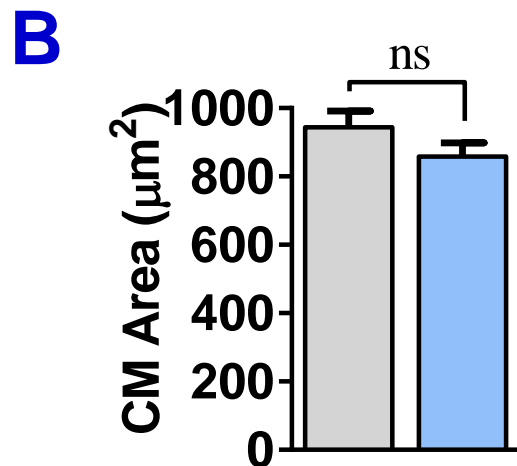
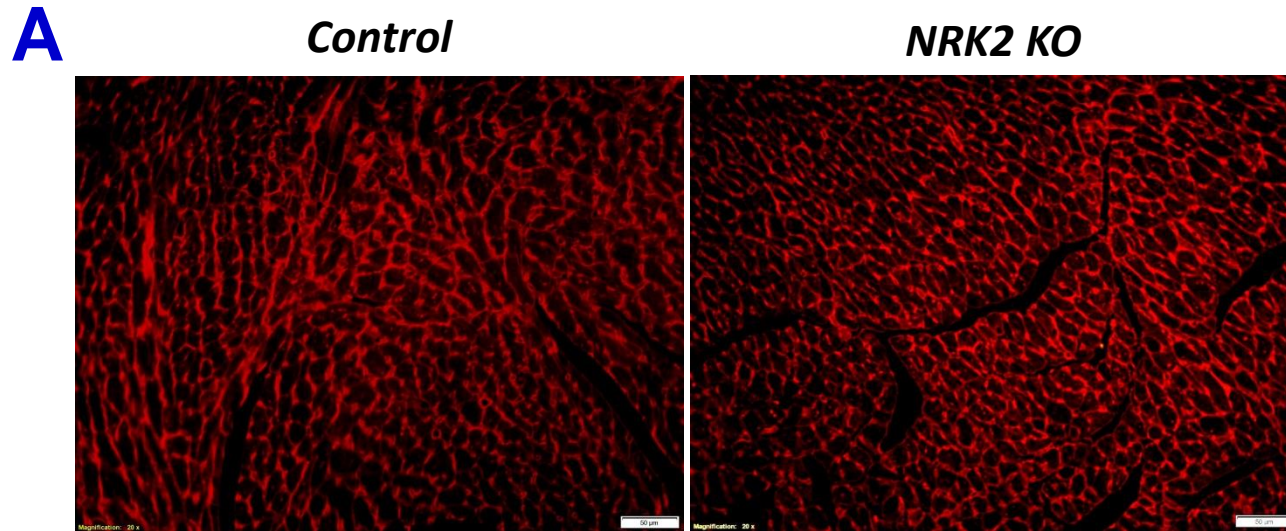


# Suppl. Figure 1



**Suppl. Figure 1; Characterization of *NMRK2* KO mice:** Bar diagrams show (A) a comparable body weight and (B) muscle mass in 8-10 week old KO and littermate control male mice. Baseline echocardiography in 8-10 week old mice shows a comparable (C) left ventricle interior dimension both at systole and diastole (LVIDs, LVIDd) and, (D) LV ejection fraction (LVEF) and fractional shortening (LVFS) in the KO vs. control mice.

# Suppl. Figure 2



**Suppl. Figure 2; Cardiomyocyte circumference post-MI:** (A) Representative images of wheat germ agglutinin (WGA) stained *NRK2 KO* and littermate control heart sections. Cardiomyocyte circumference measurement show a comparable cardiomyocyte size in (B) wheat agglutinin (WGA) and (C) trichrome stained 4 weeks post-MI heart sections, n=5-6.