

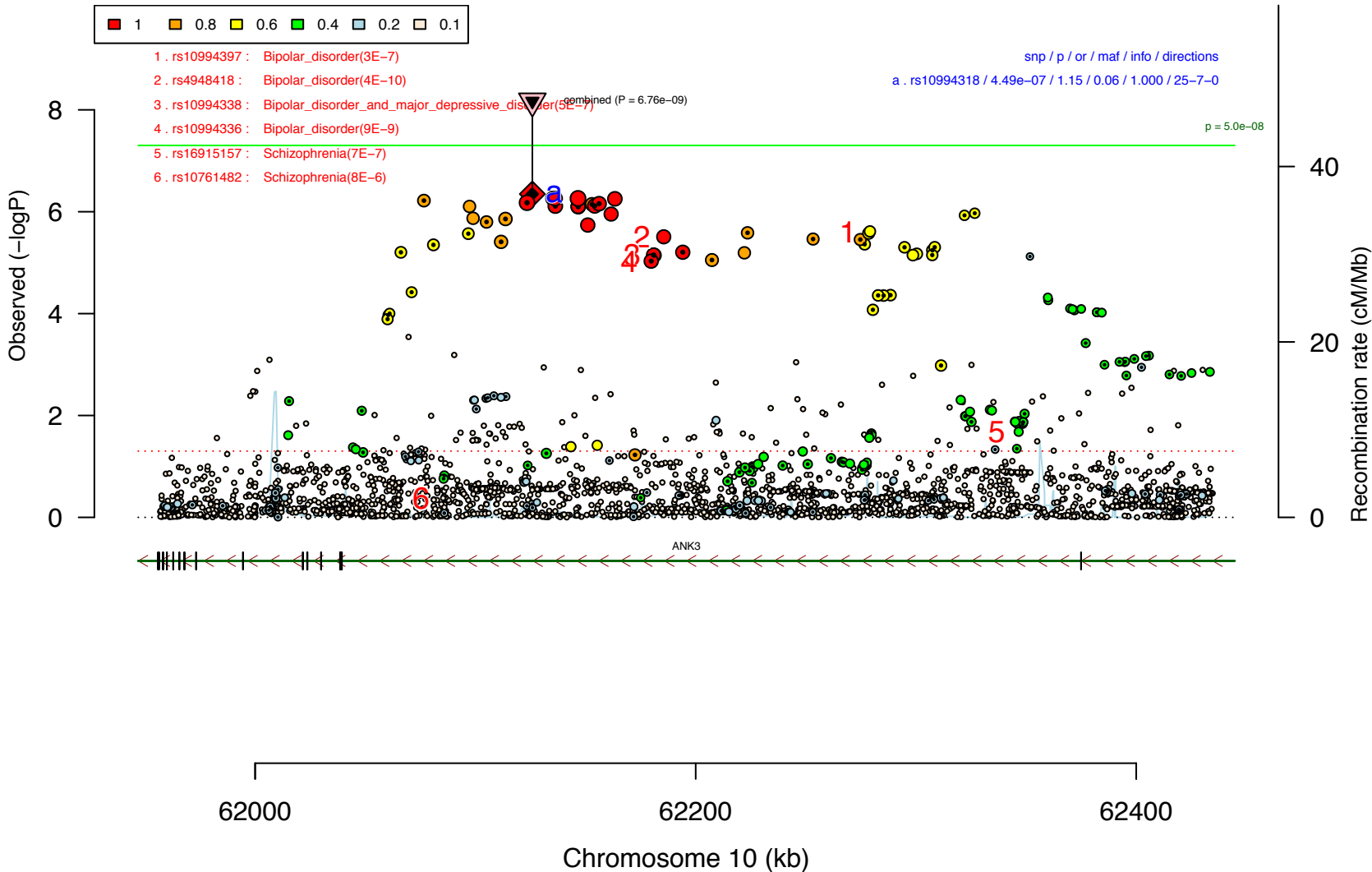
Supplemental Data 1-3. Regional association plots (1), forest plots for discovery GWAS studies (2) and forest plots for follow-up studies (3), for all 31 lead SNPs in the 30 genome-wide significant loci. Each multi-figure PDF below is a separate supplemental data piece.

Supplemental Data 1. Regional association plots.

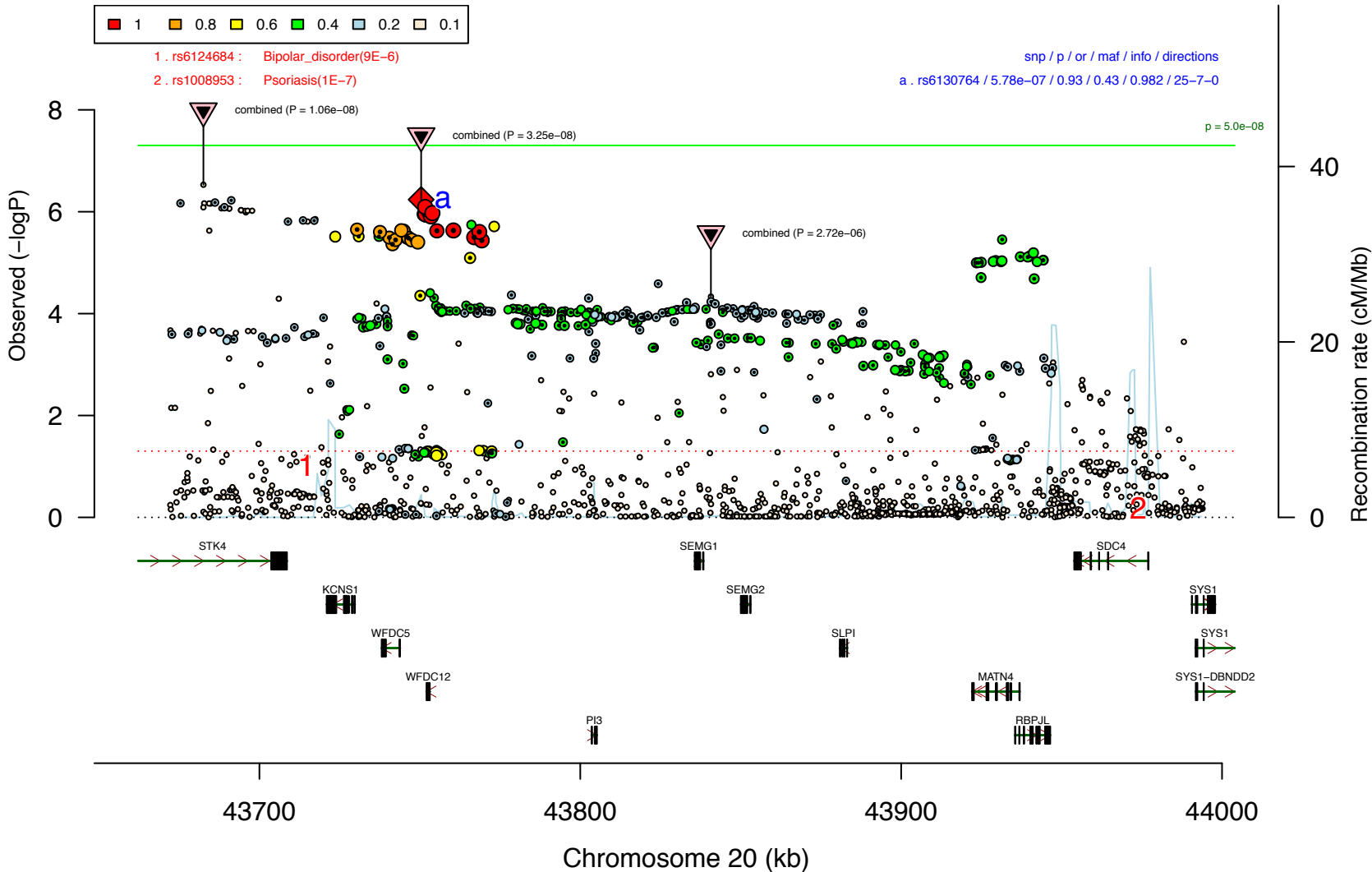
Supplemental Data 2. Forest plots of the 32 primary GWAS datasets.

Supplemental Data 3. Forest plots of the 7 followup datasets.

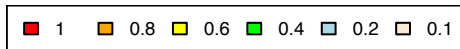
PGC_BIP32b_mds7a.10.chr10



PGC_BIP32b_mds7a.20.chr20



PGC_BIP32b_mds7a.15.chr15

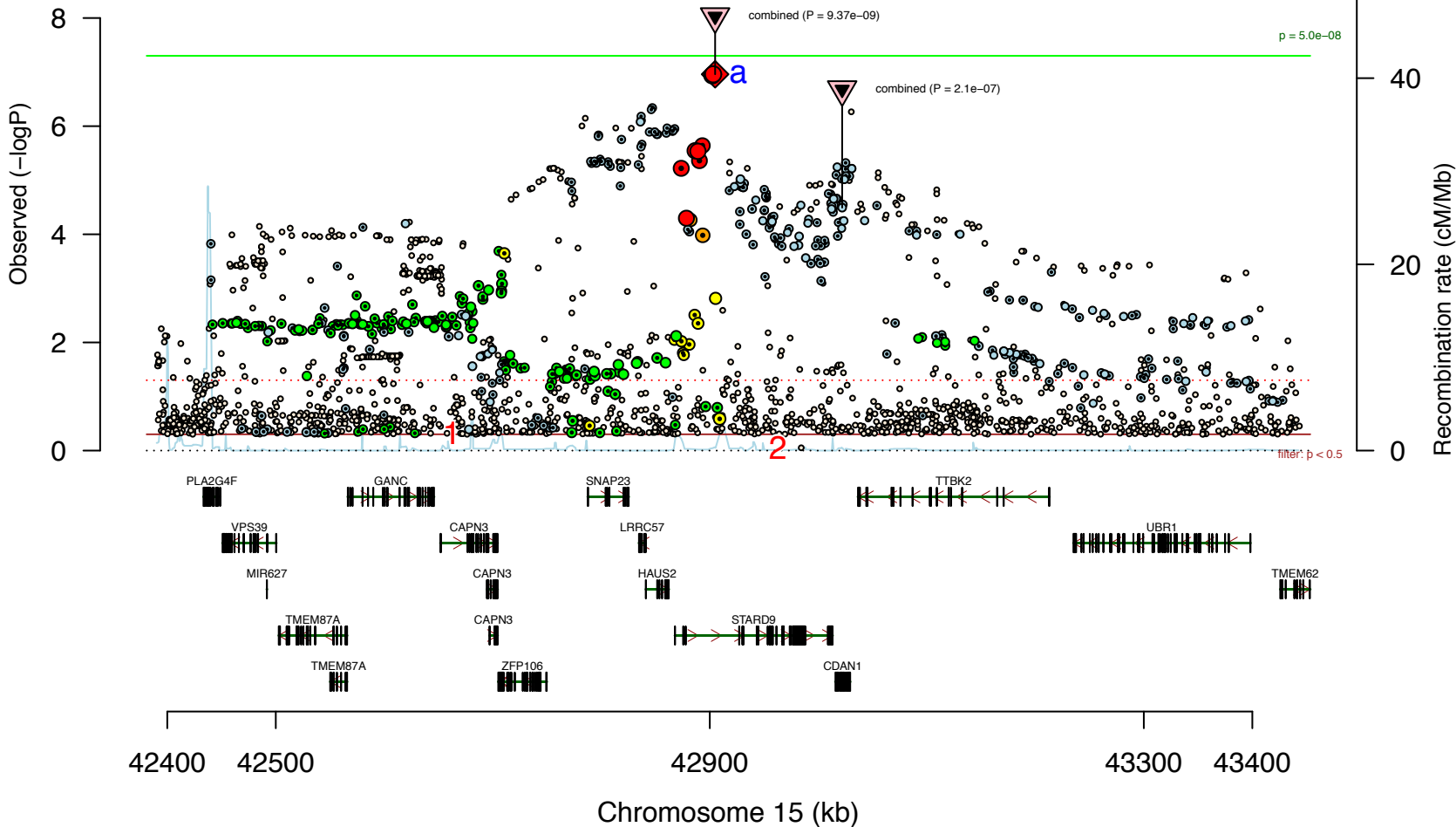


1 . rs2412710 : Triglycerides(2E-8)

2 . rs16957063 : Protein_quantitative_trait_loci(5E-7)

snp / p / or / maf / info / directions

a . rs4447398 / 1.10e-07 / 1.11 / 0.12 / 0.983 / 27-5-0



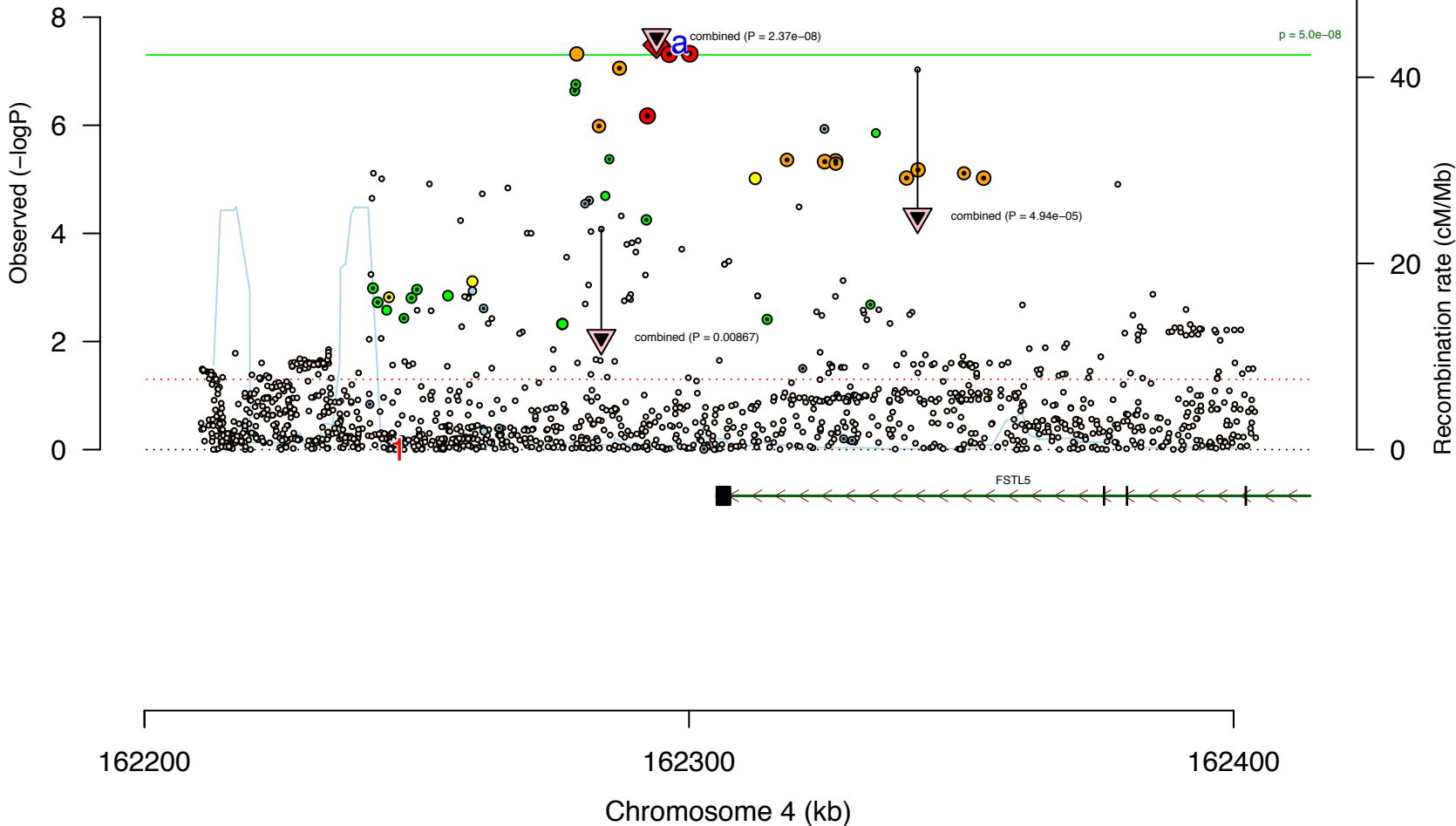
PGC_BIP32b_mds7a.4.chr4



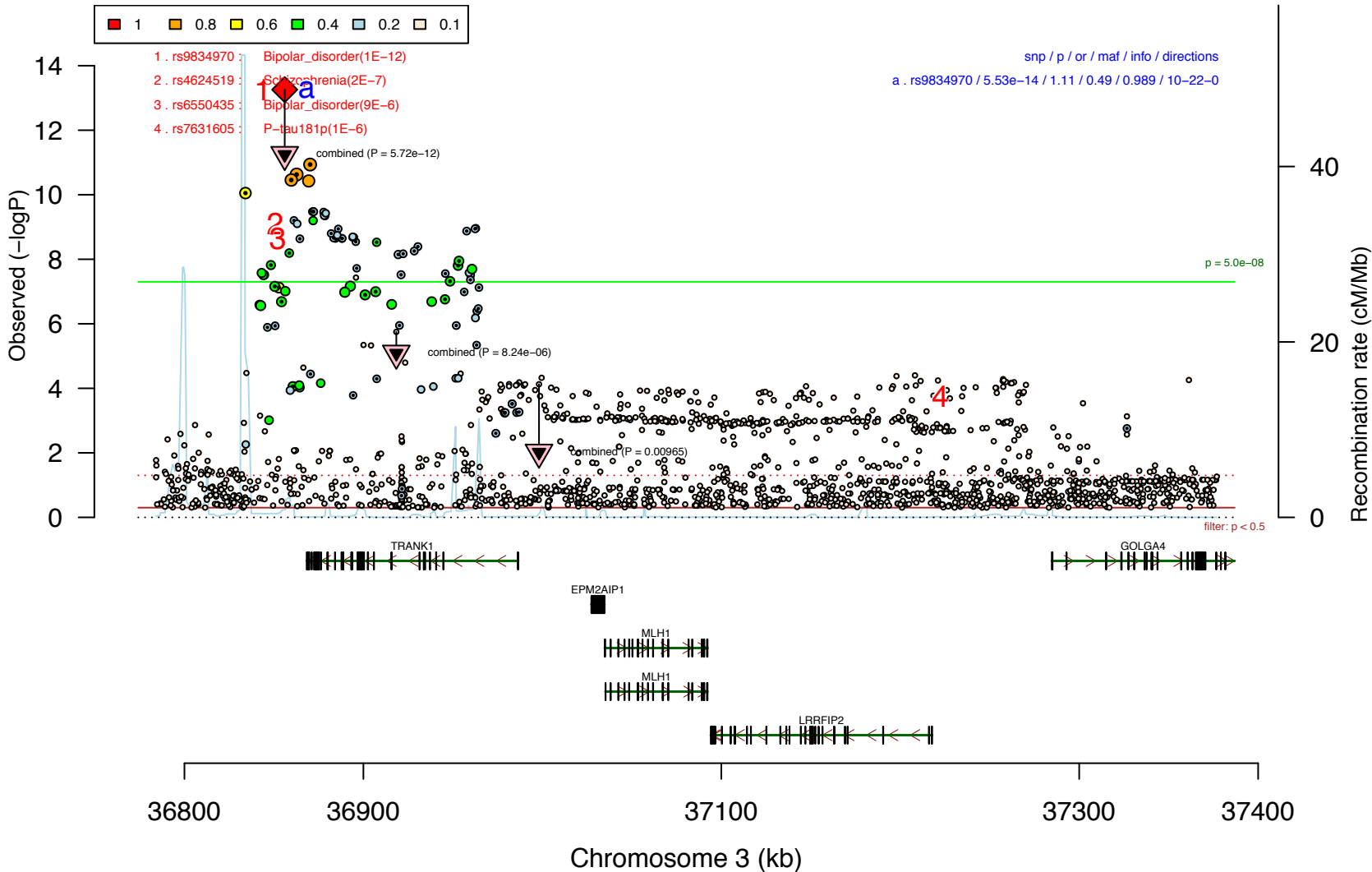
1 .rs4470583 : Diabetic_retinopathy_(4E-7)

snp / p / or / maf / info / directions

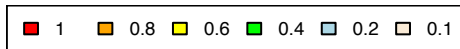
a .rs11724116 / 3.27e-08 / 0.90 / 0.16 / 0.967 / 6-26-0



PGC_BIP32b_mds7a.3.chr3



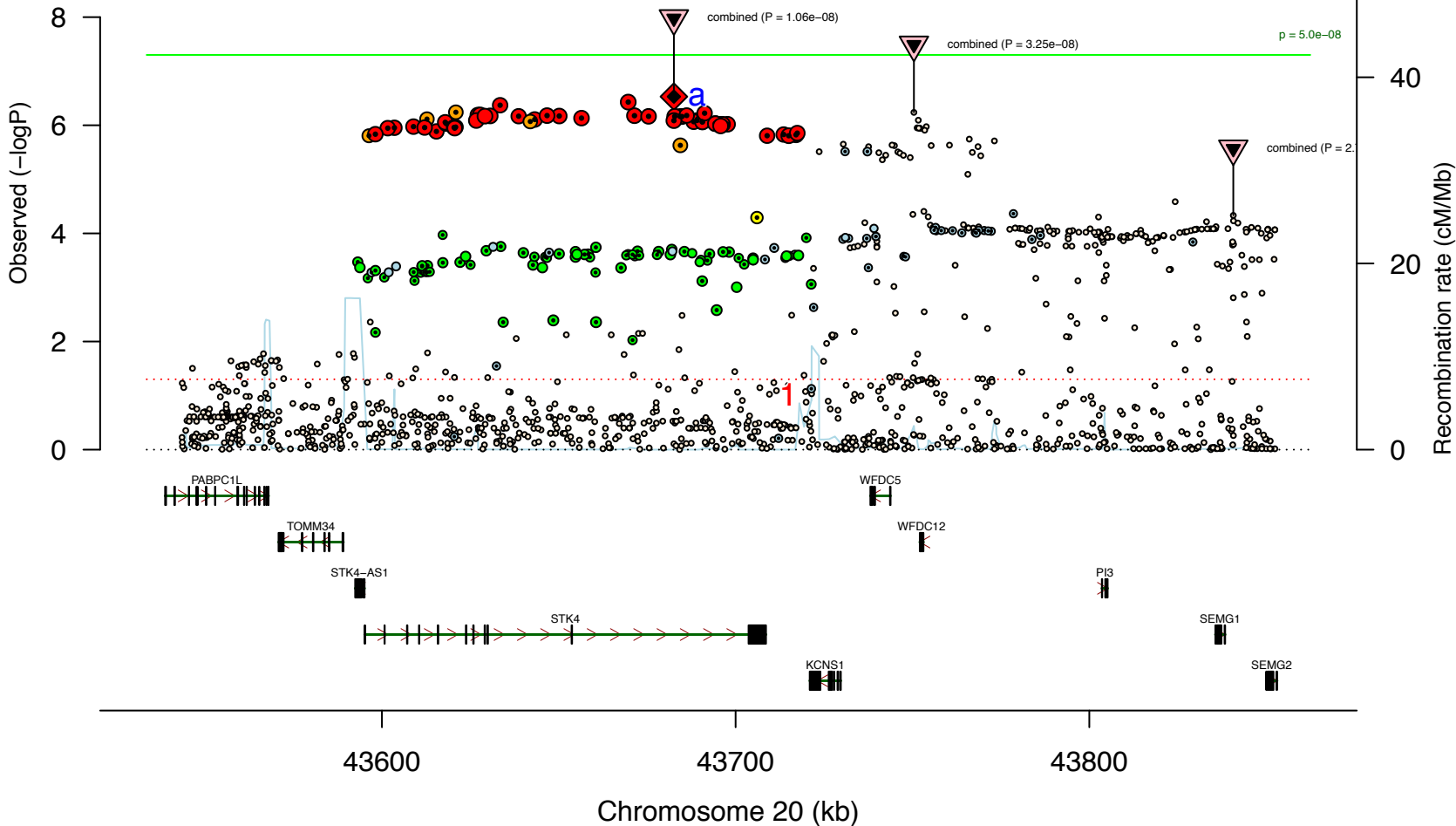
PGC_BIP32b_mds7a.20.chr20



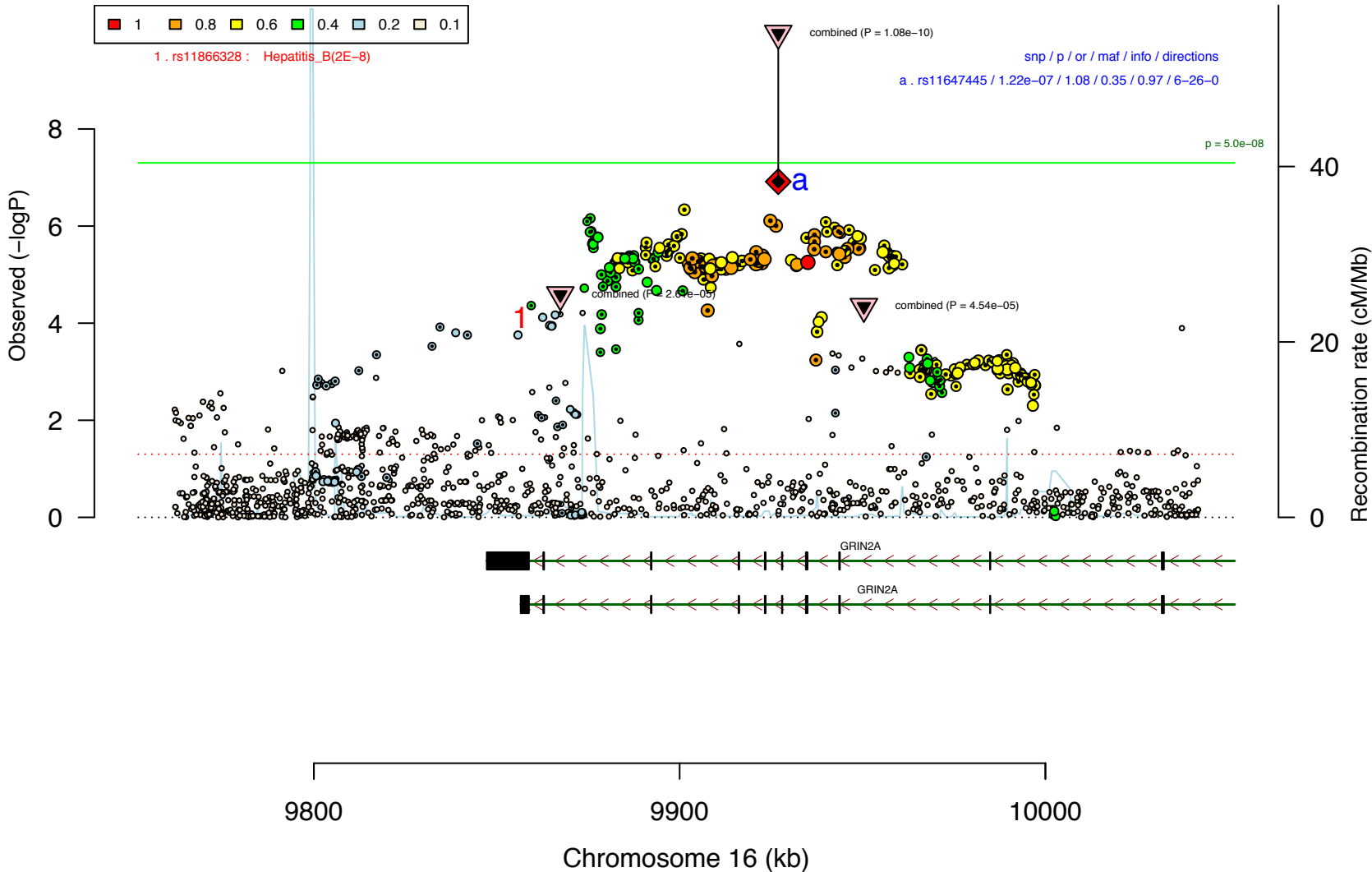
1 .rs6124684 : Bipolar_disorder(9E-6)

snp / p / or / maf / info / directions

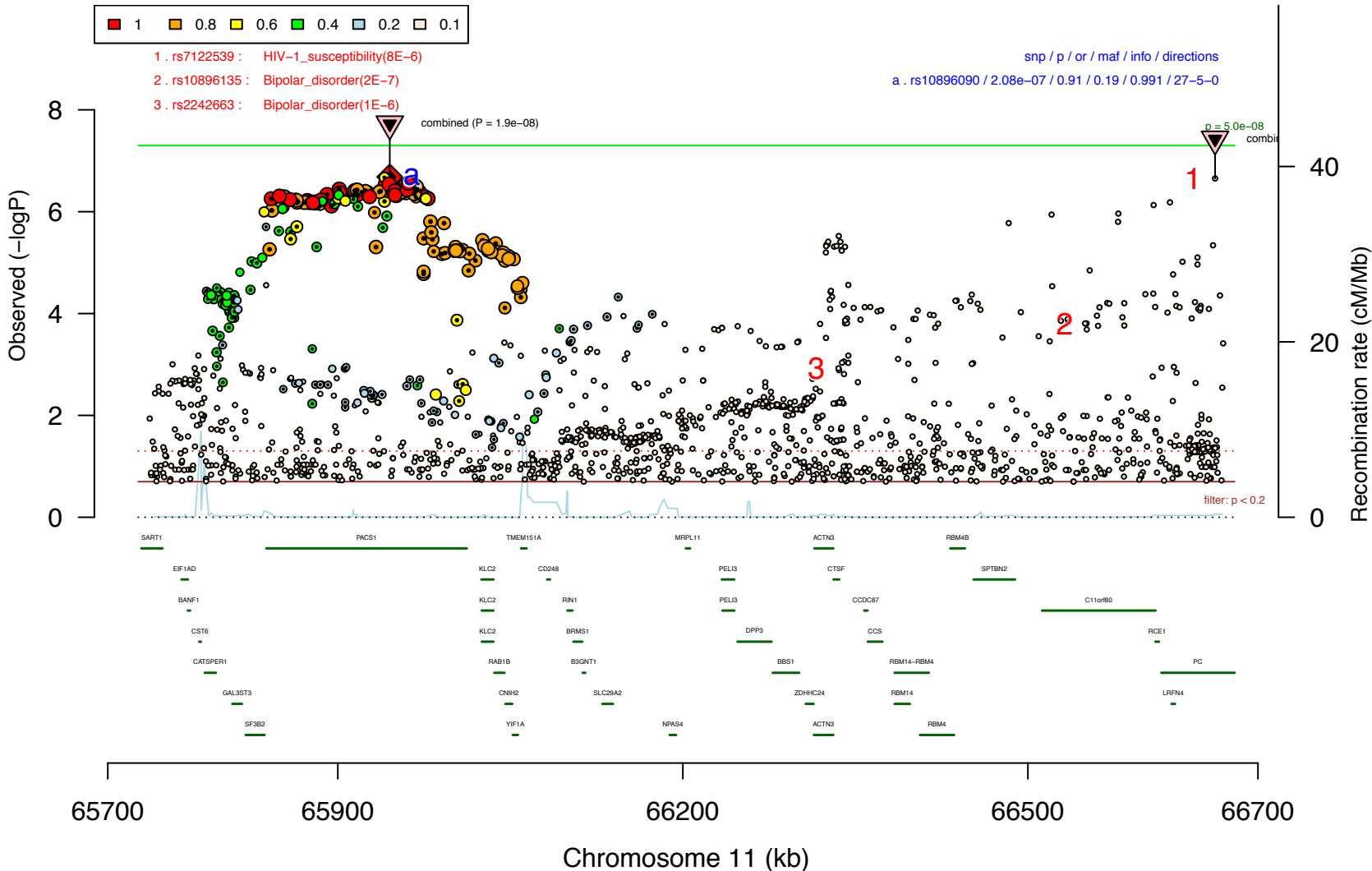
a. chr20_43682549_1 / 2.95e-07 / 0.92 / 0.28 / 0.934 / 24-8-0



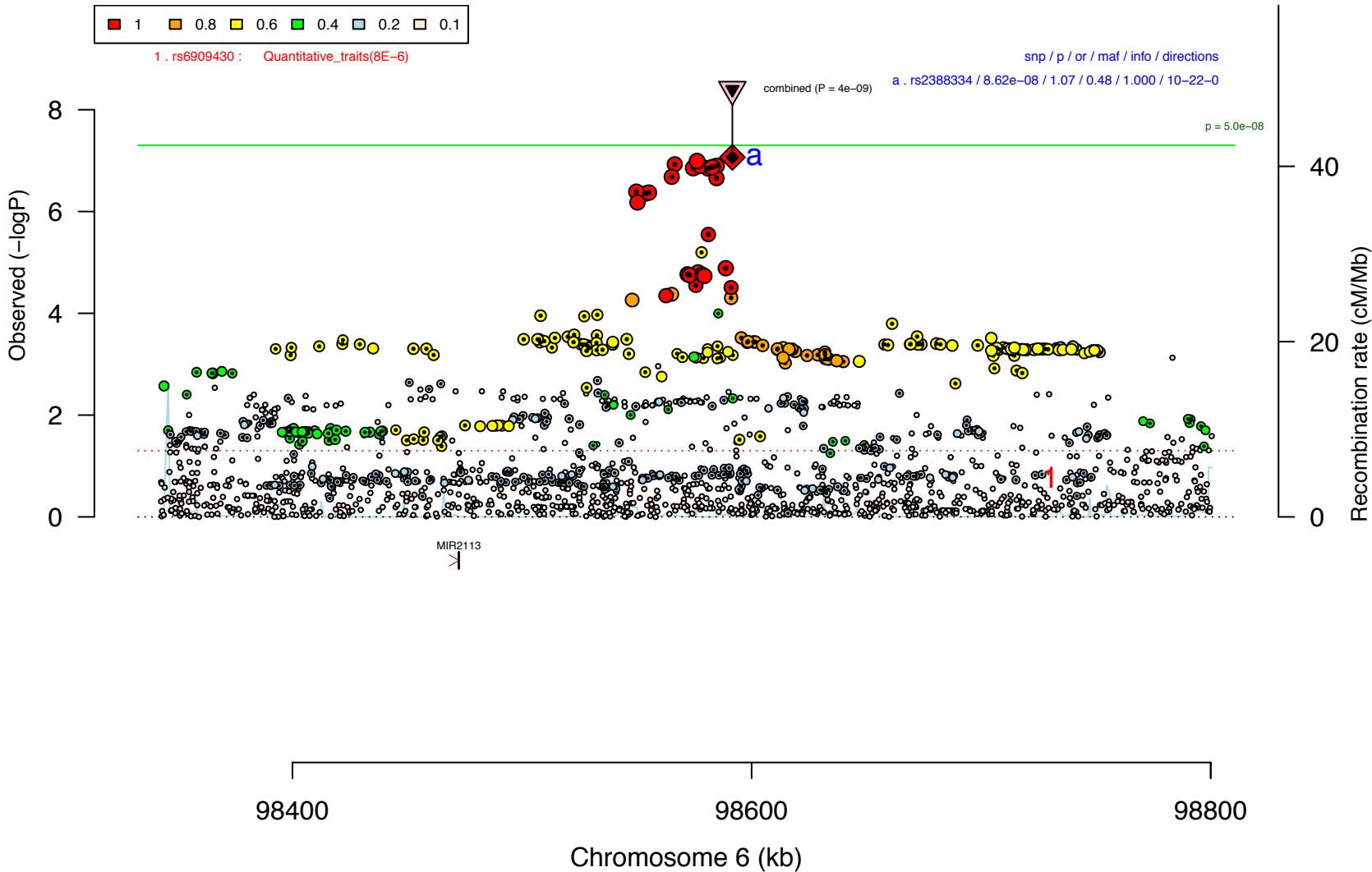
PGC_BIP32b_mds7a.16.chr16



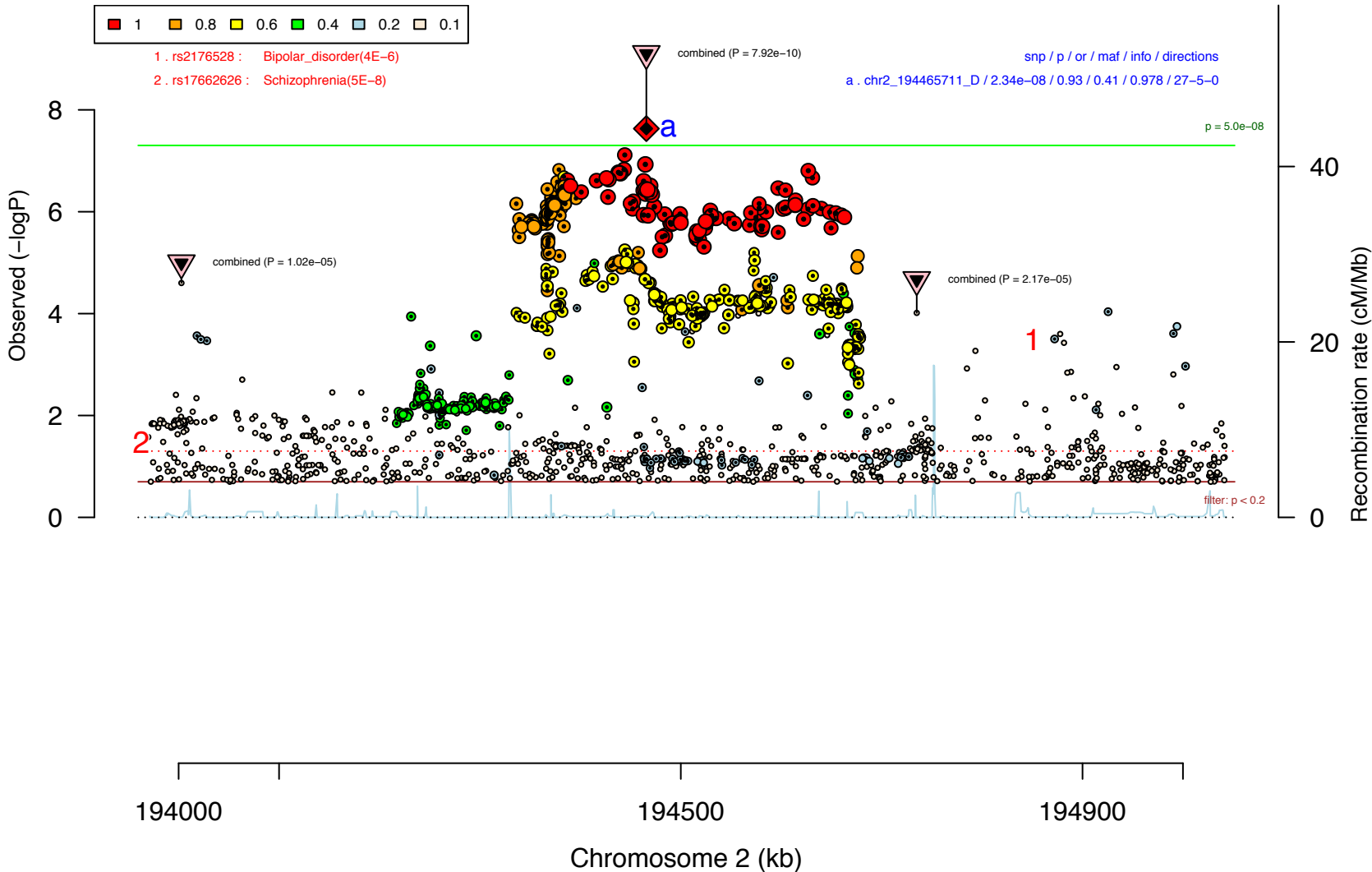
PGC_BIP32b_mds7a.11.chr11



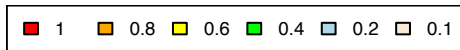
PGC_BIP32b_mds7a.6.chr6



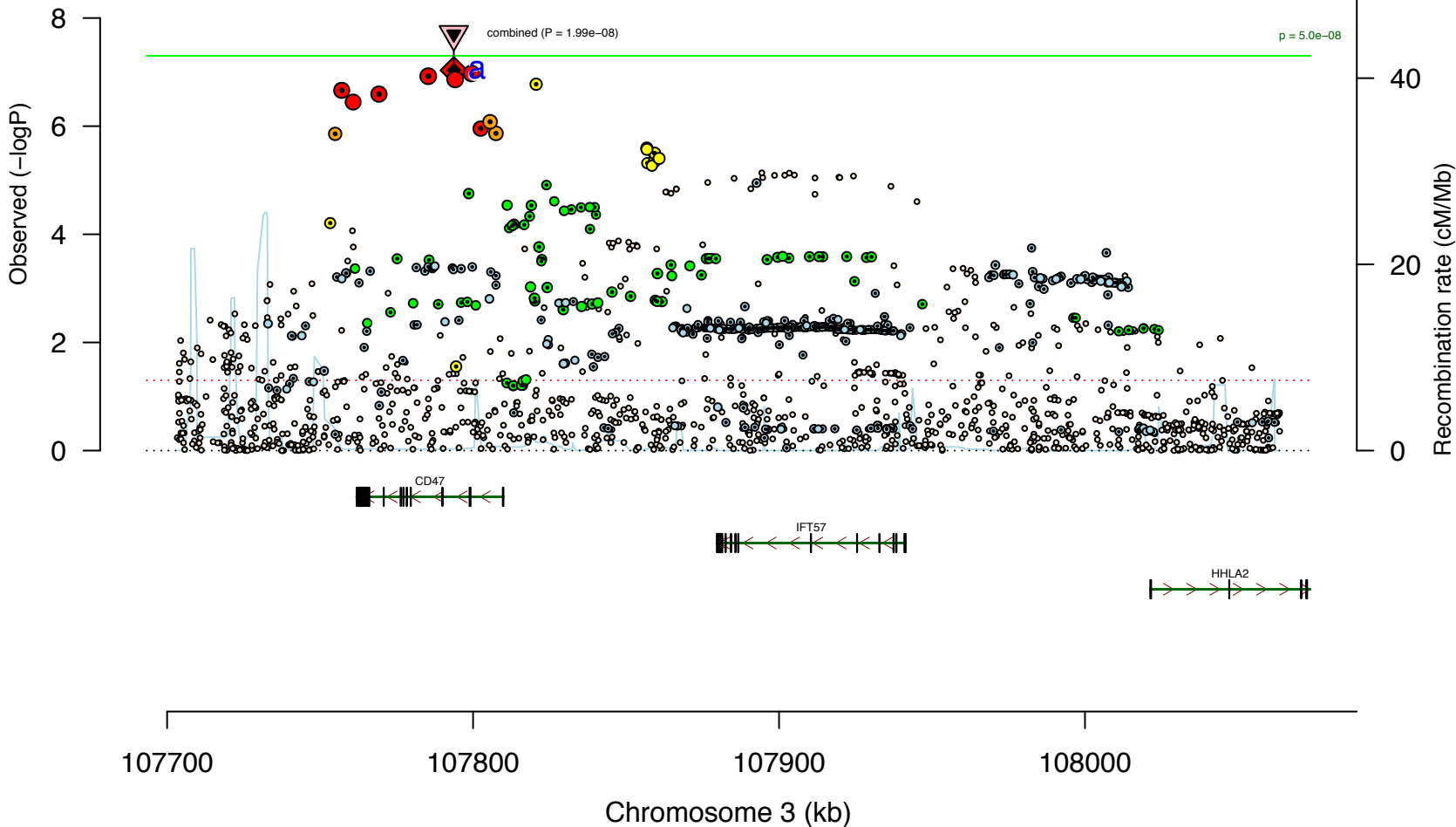
PGC_BIP32b_mds7a.2.chr2



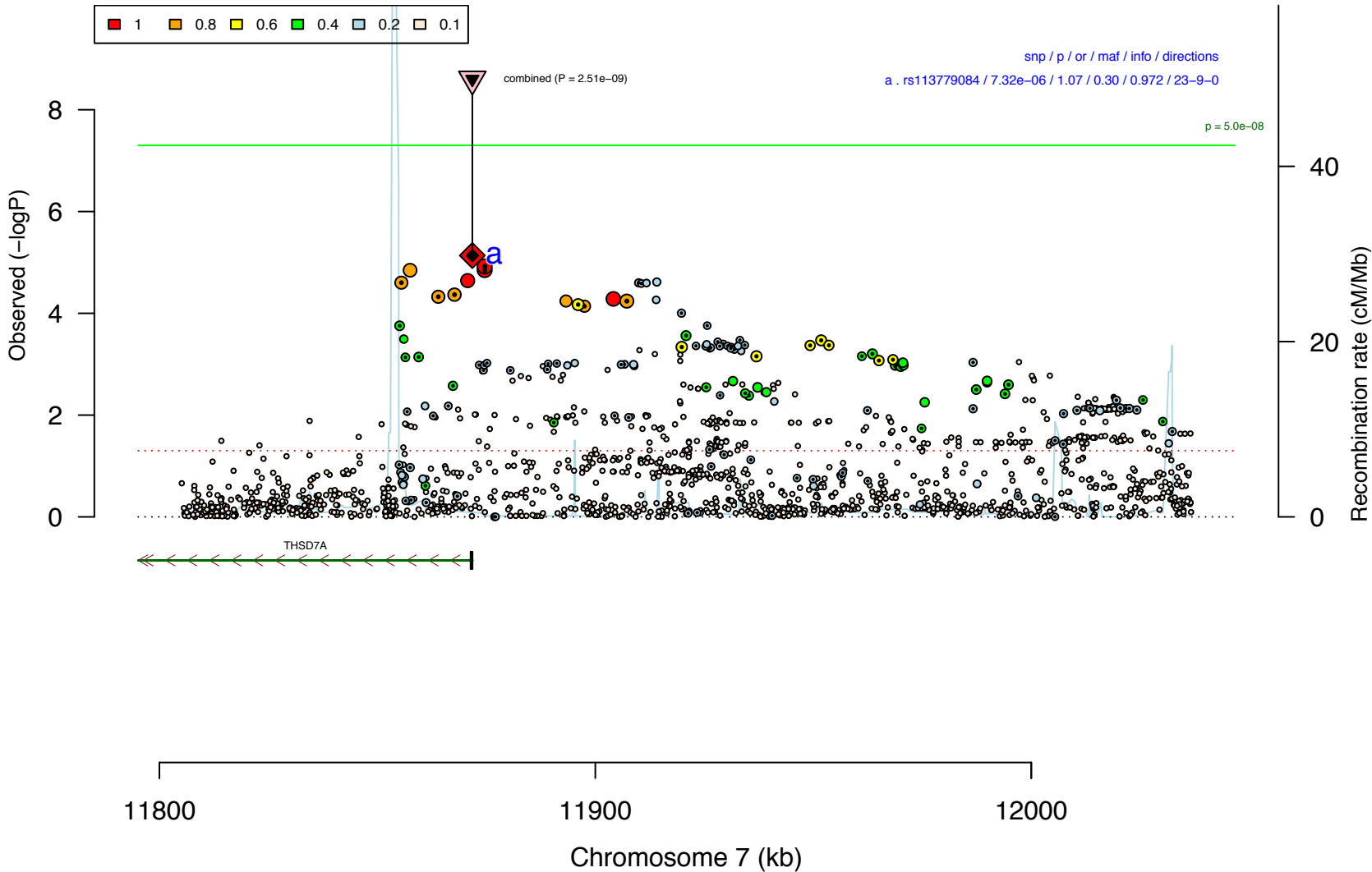
PGC_BIP32b_mds7a.3.chr3



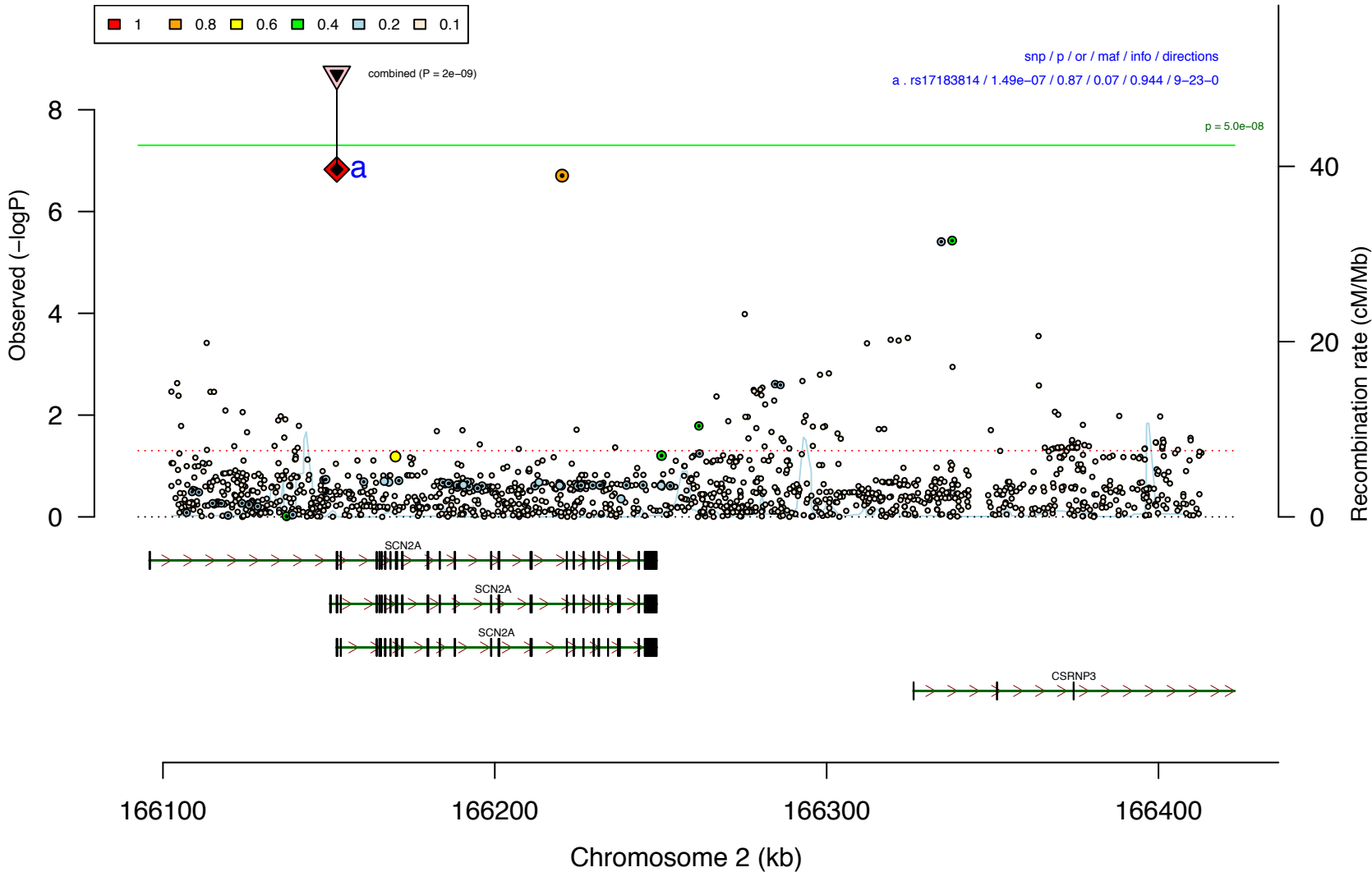
snp / p / or / maf / info / directions
a . rs3804640 / 9.26e-08 / 0.93 / 0.47 / 0.993 / 26-6-0



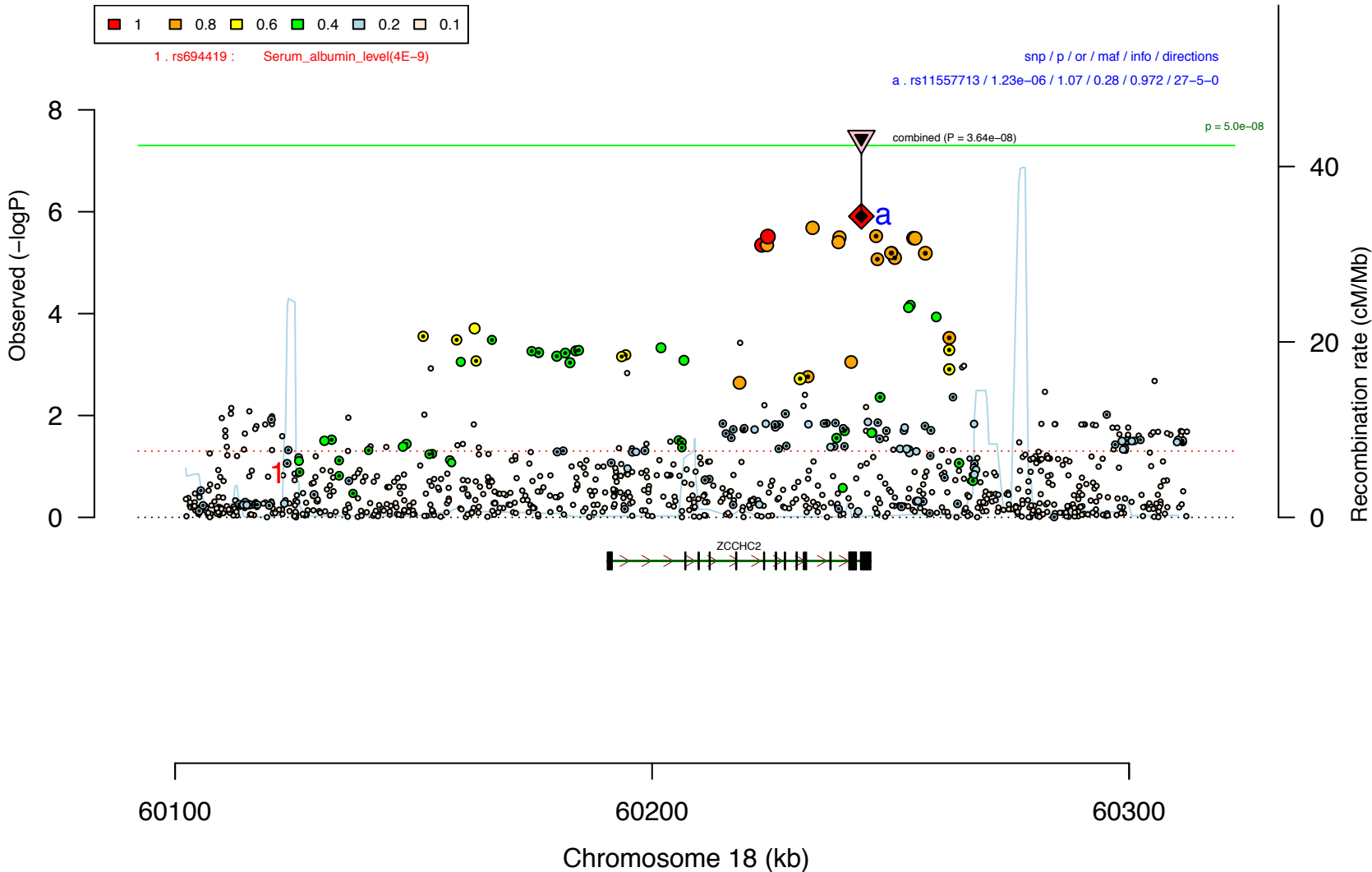
PGC_BIP32b_mds7a.7.chr7



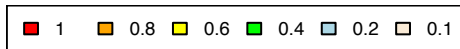
PGC_BIP32b_mds7a.2.chr2



PGC_BIP32b_mds7a.18.chr18



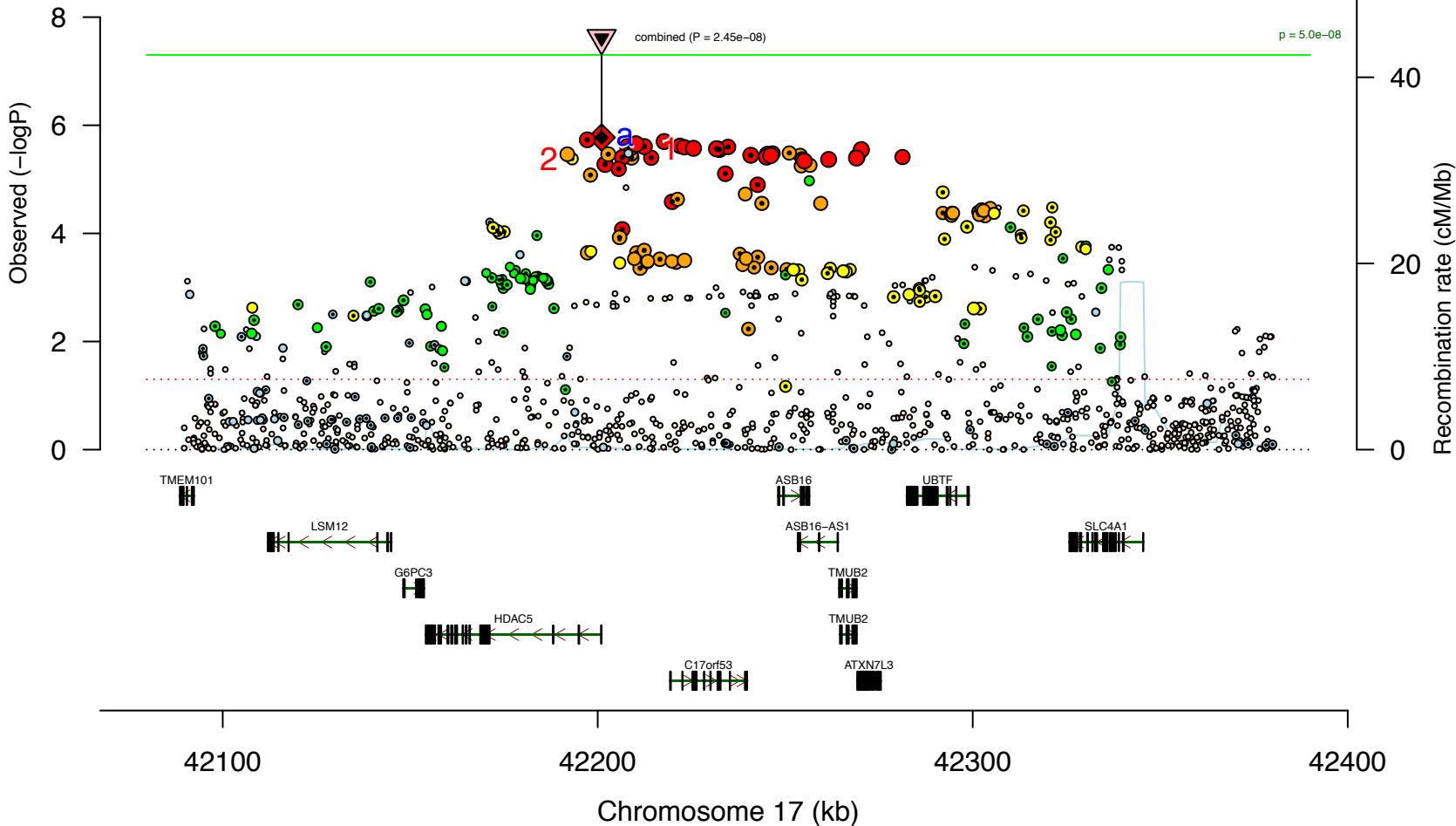
PGC_BIP32b_mds7a.17.chr17



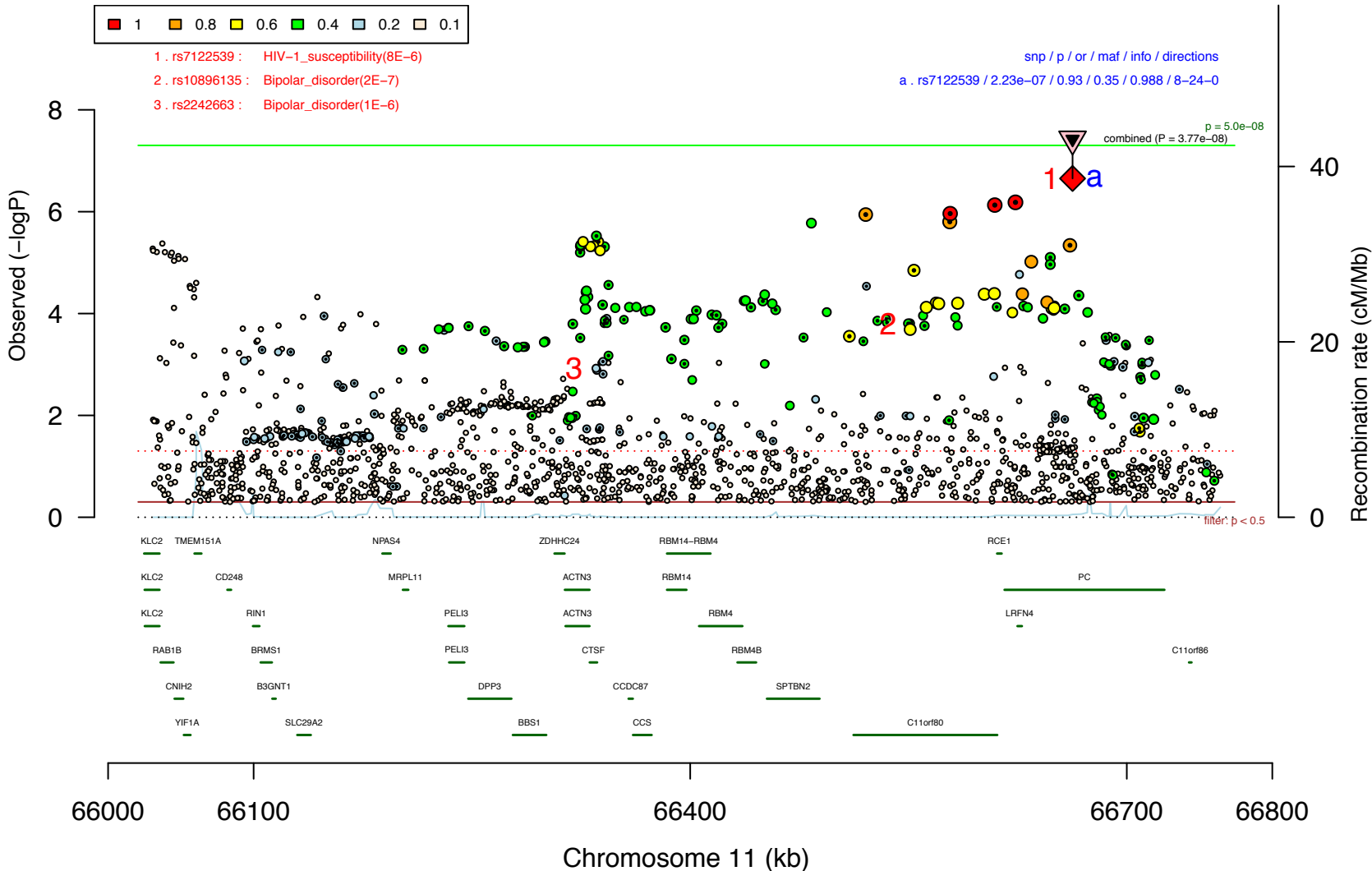
1 . rs227584 : Bone_mineral_density(3E-24)
 2 . rs228769 : Bone_mineral_density(2E-8)

snp / p / or / maf / info / directions

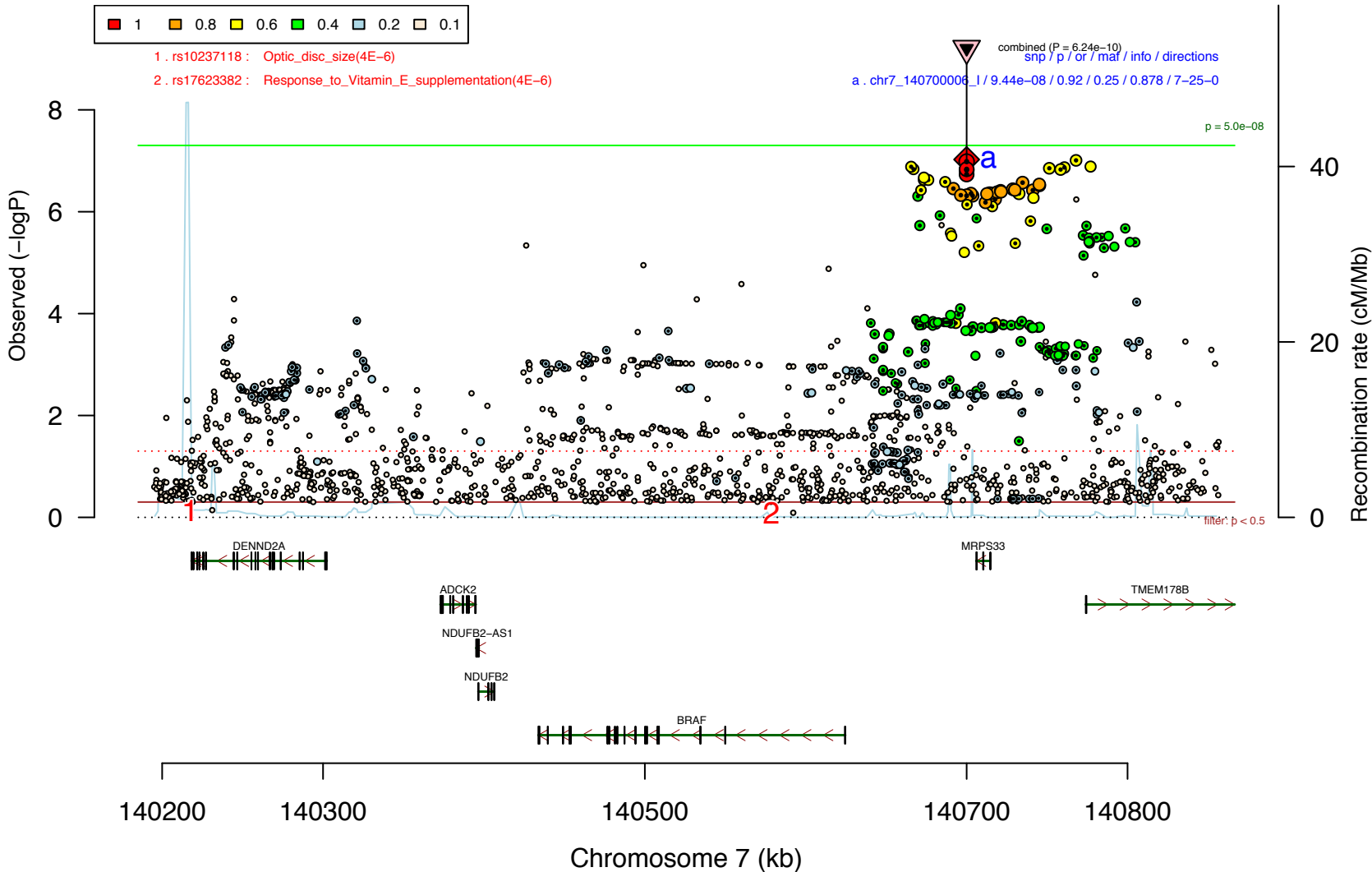
a . rs112114764 / 1.68e-06 / 1.07 / 0.31 / 0.962 / 6-26-0



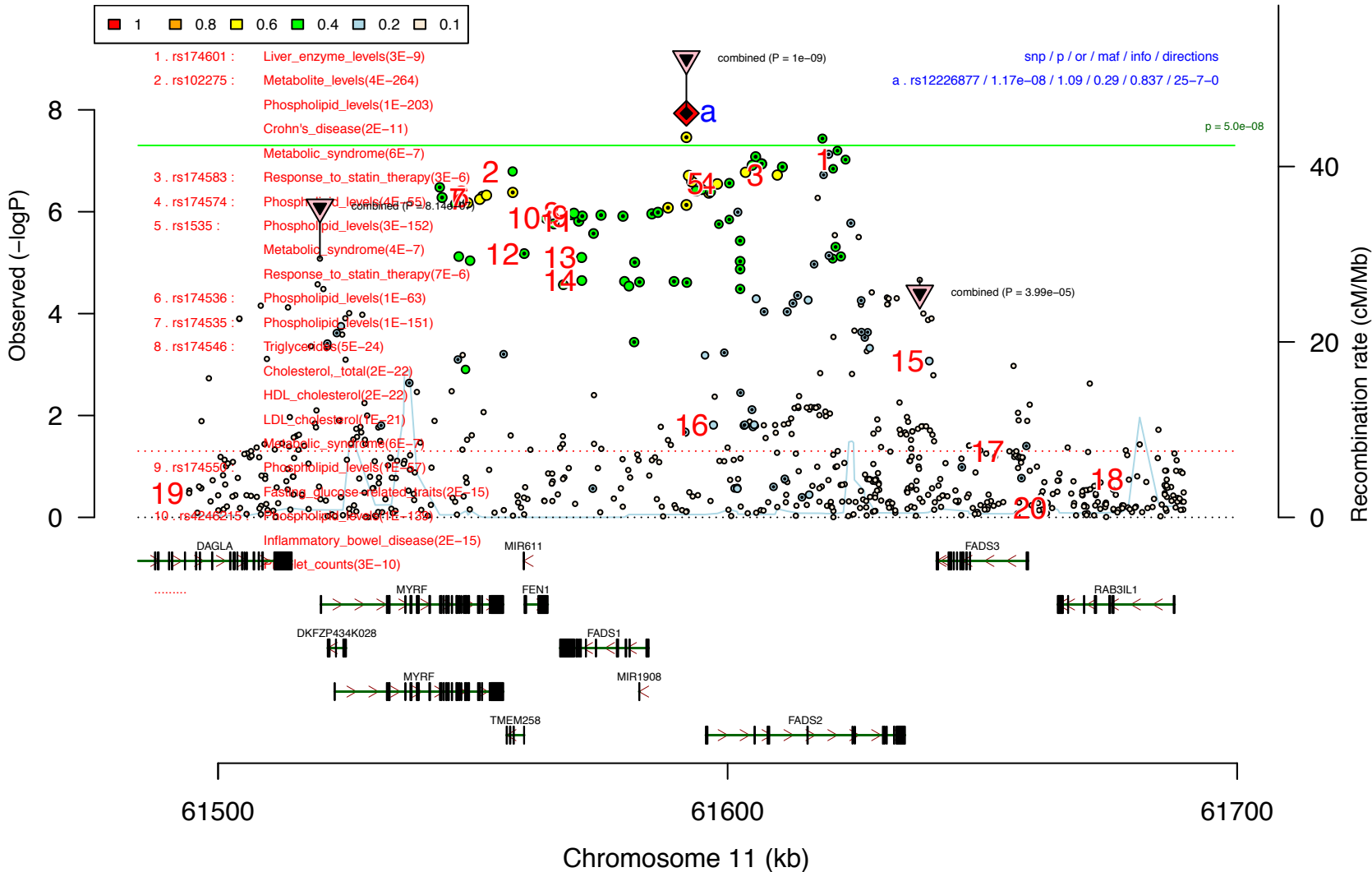
PGC_BIP32b_mds7a.11.chr11



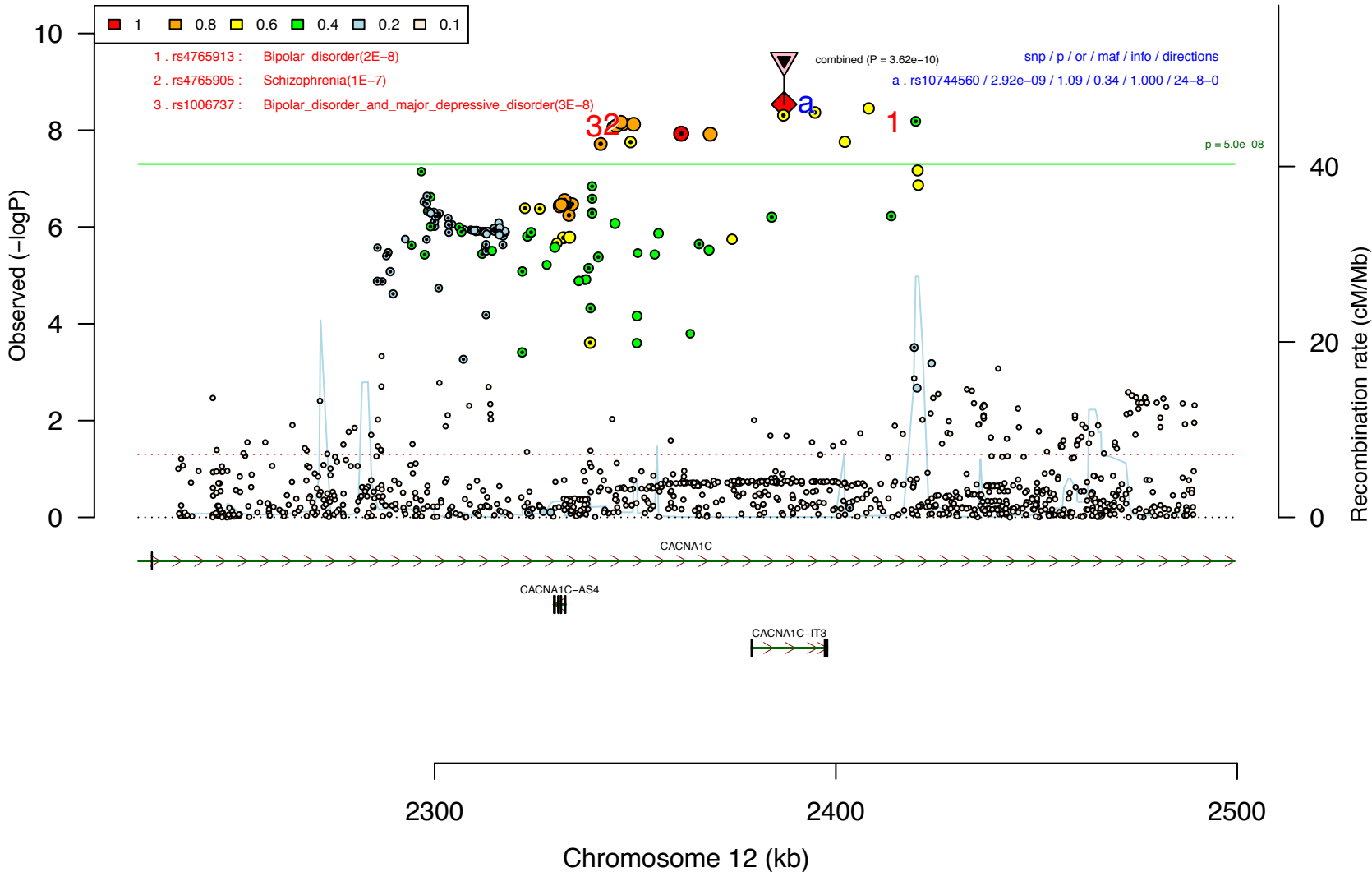
PGC_BIP32b_mds7a.7.chr7



PGC_BIP32b_mds7a.11.chr11



PGC_BIP32b_mds7a.12.chr12



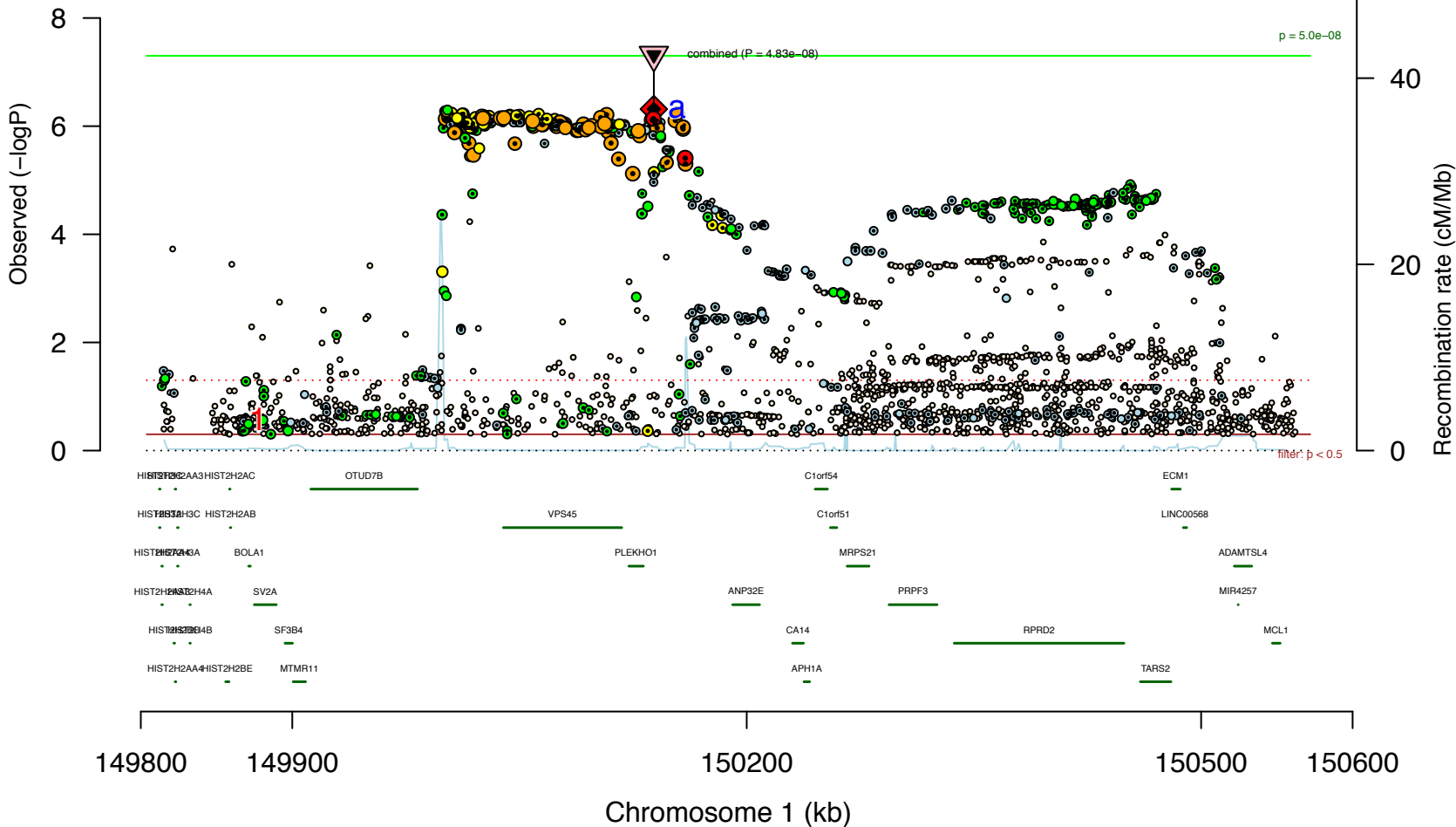
PGC_BIP32b_mds7a.1.chr1



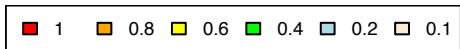
1 . rs11205277 : Height(5E-32)

snp / p / or / maf / info / directions

a . rs7544145 / 4.83e-07 / 0.91 / 0.19 / 0.93 / 27-5-0



PGC_BIP32b_mds7a.10.chr10

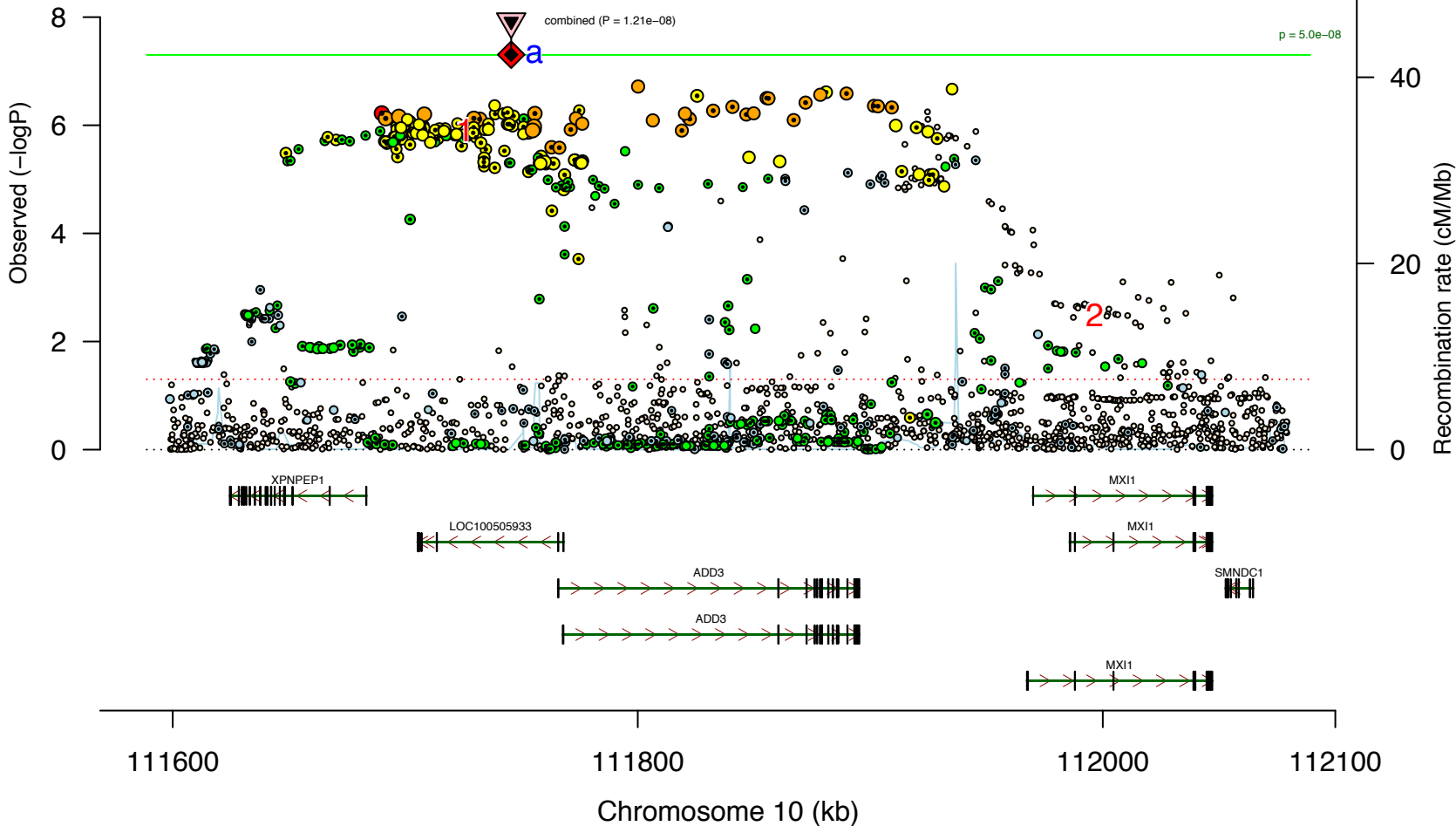


1 . rs17095355 : Biliary_atresia(7E-9)

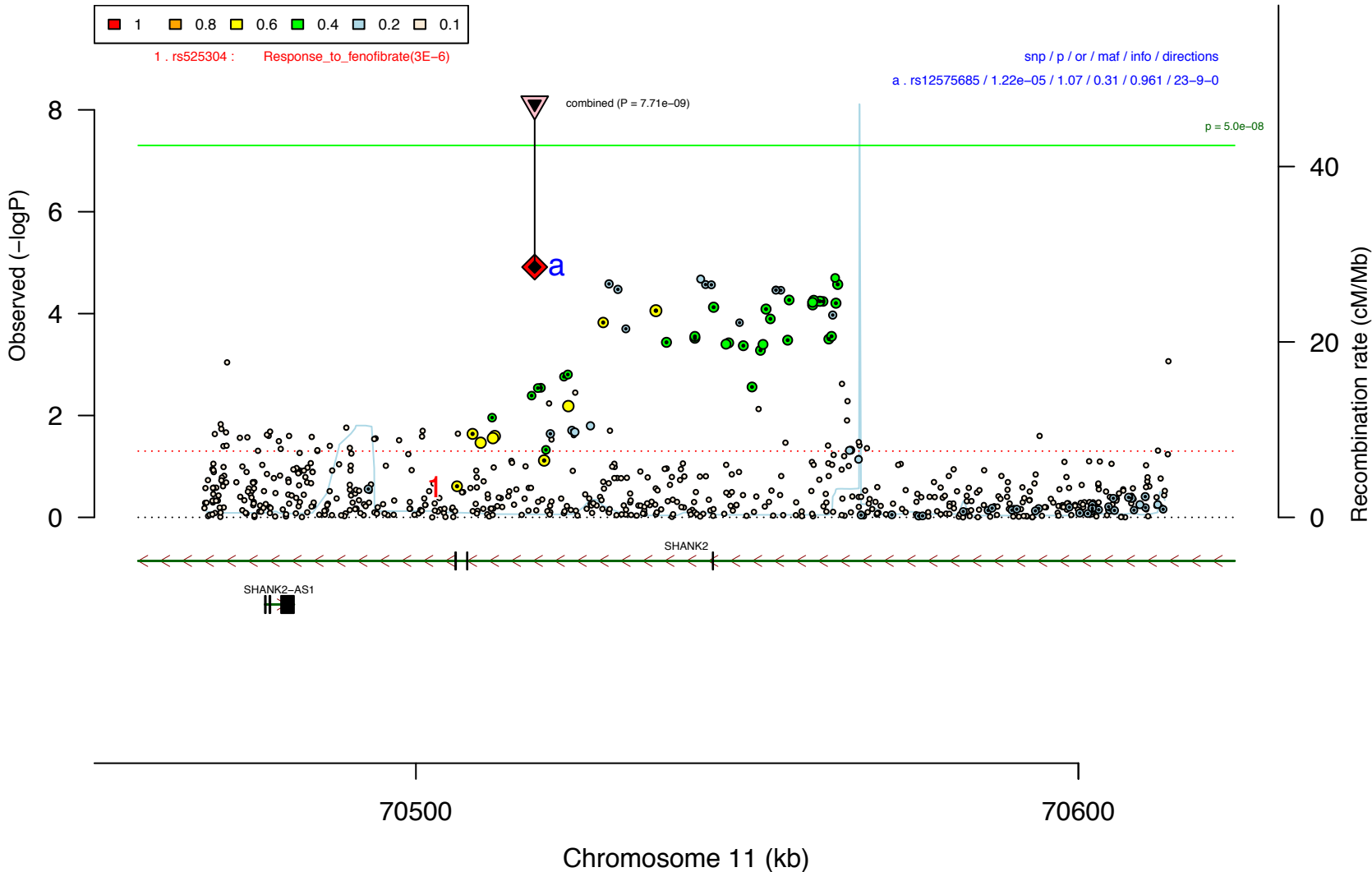
2 . rs716595 : Normalized_brain_volume(8E-6)

snp / p / or / maf / info / directions

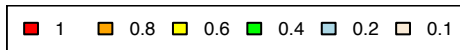
a . chr10_111745562_1 / 4.95e-08 / 1.10 / 0.16 / 0.928 / 7-25-0



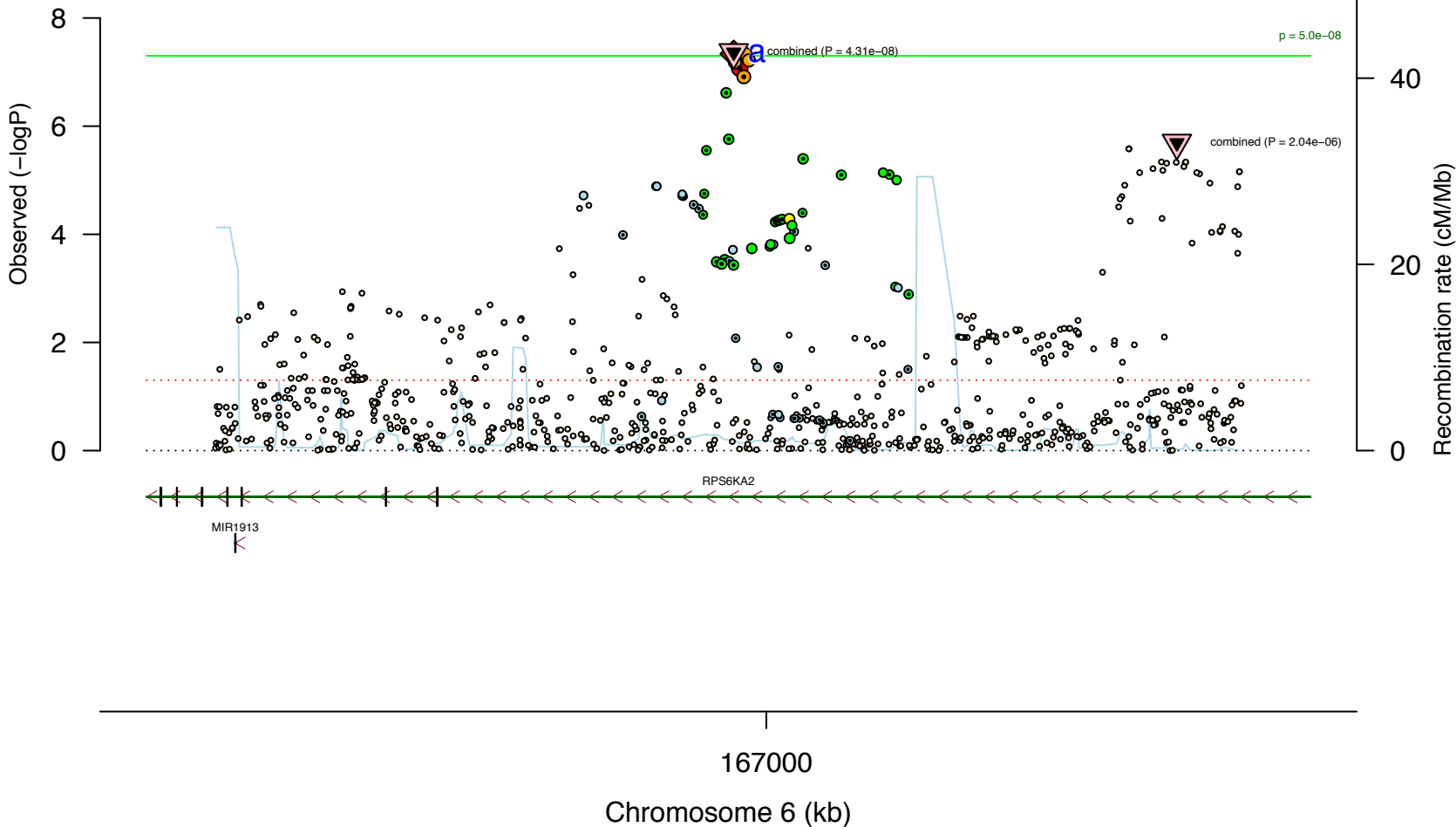
PGC_BIP32b_mds7a.11.chr11



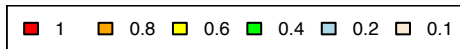
PGC_BIP32b_mds7a.6.chr6



snp / p / or / maf / info / directions
a . rs10455979 / 4.60e-08 / 1.08 / 0.47 / 0.954 / 6-26-0



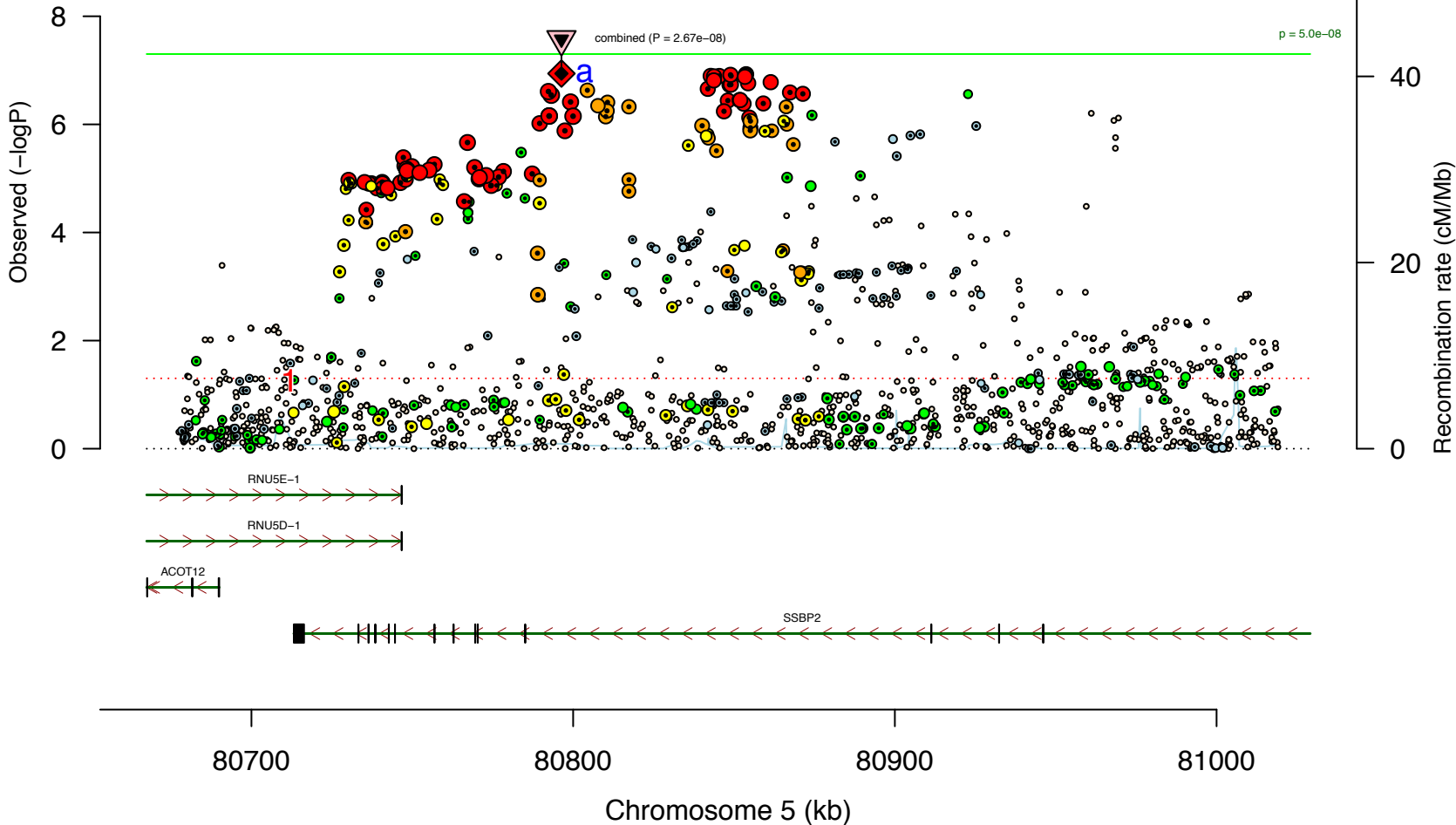
PGC_BIP32b_mds7a.5.chr5



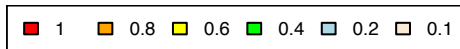
1 .rs7732320 : Glioblastoma(1E-6)

snp / p / or / maf / info / directions

a .rs10035291 / 1.15e-07 / 0.93 / 0.32 / 0.95 / 27-5-0



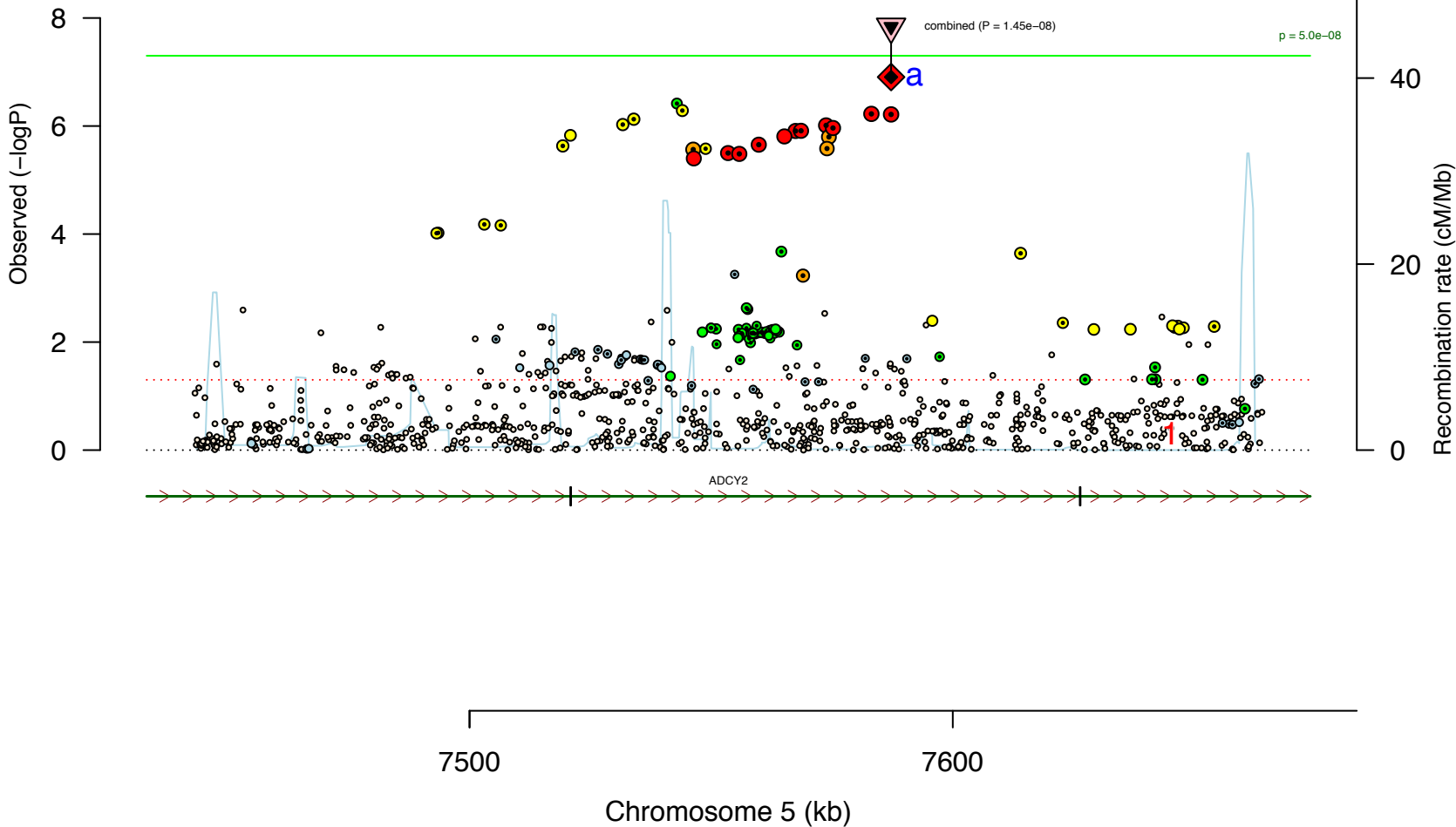
PGC_BIP32b_mds7a.5.chr5



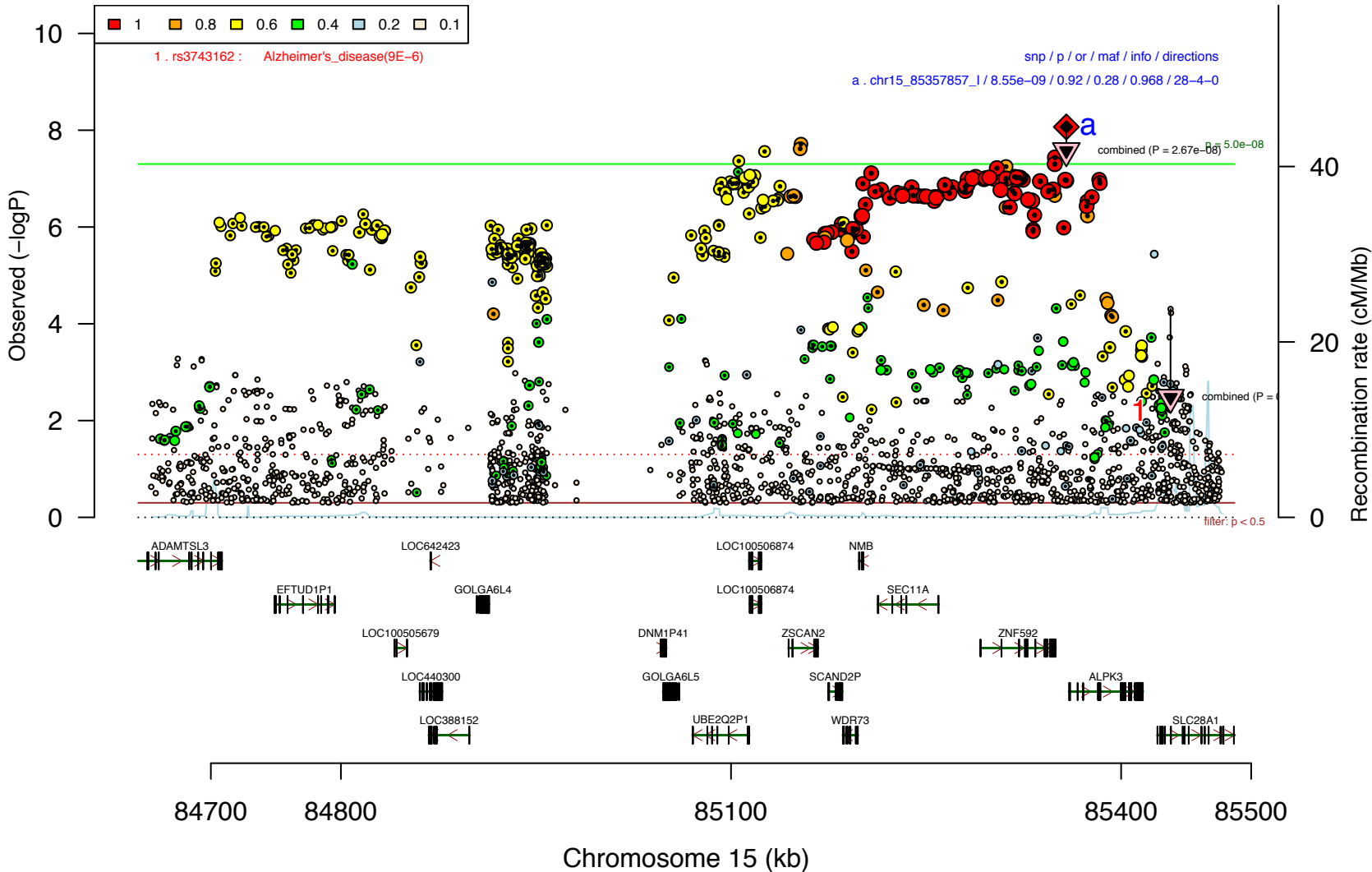
1 .rs4702484 : Capecitabine_sensitivity(5E-8)

snp / p / or / maf / info / directions

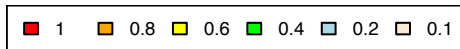
a . chr5_7587236_D / 1.24e-07 / 1.10 / 0.18 / 0.925 / 26-6-0



PGC_BIP32b_mds7a.15.chr15



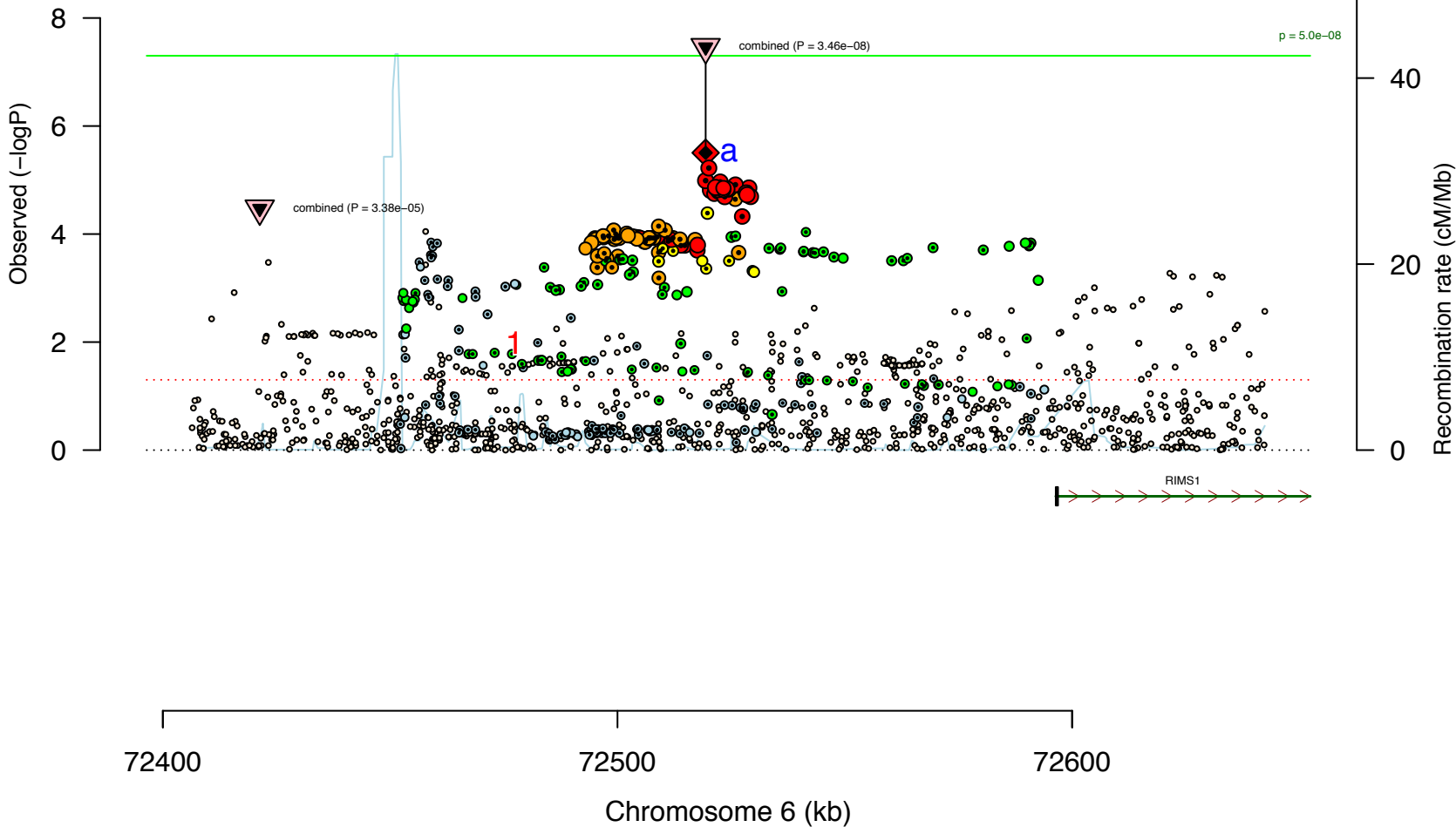
PGC_BIP32b_mds7a.6.chr6



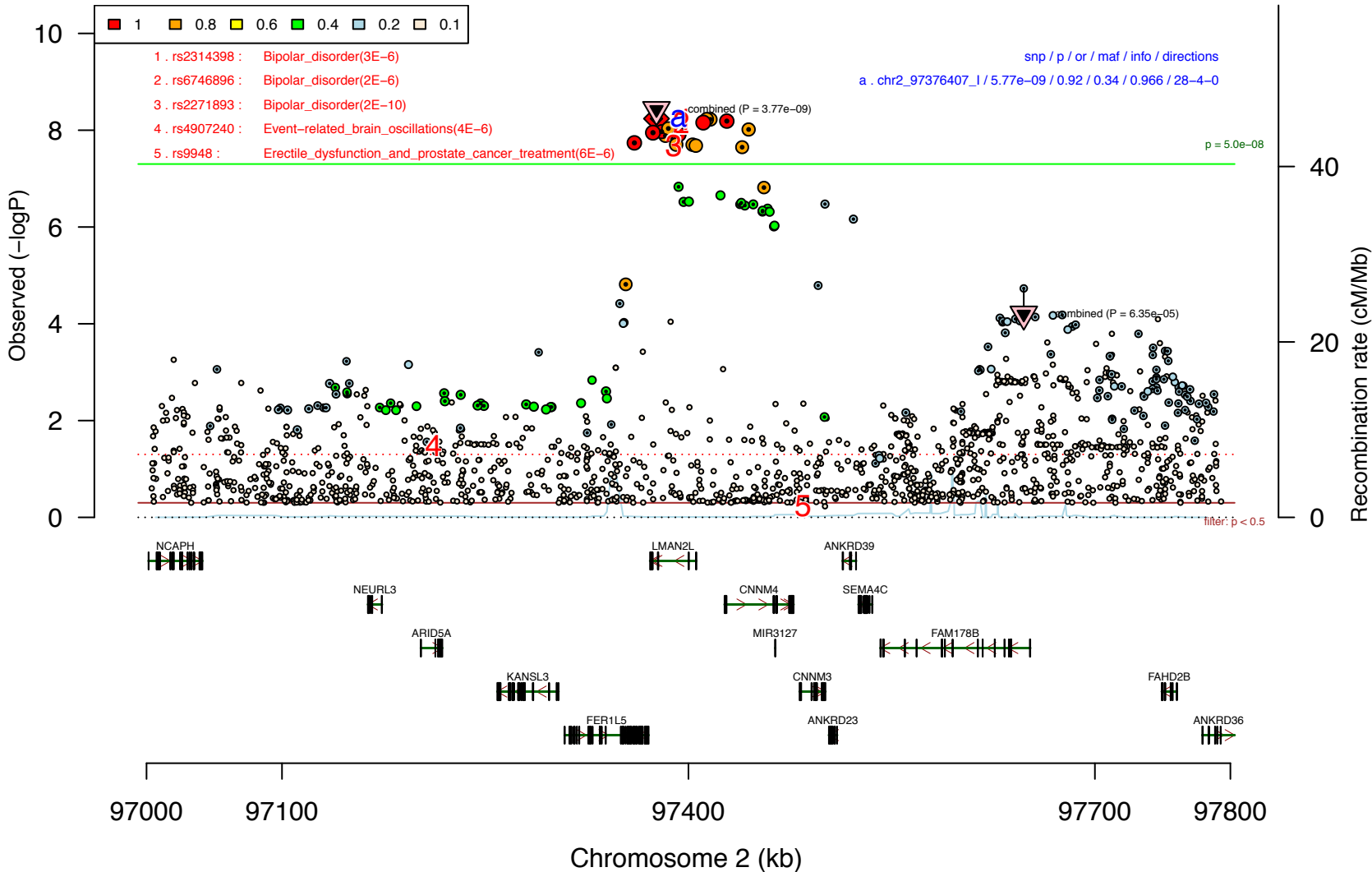
1 .rs10455248 : Cognitive_performance(4E-6)

snp / p / or / maf / info / directions

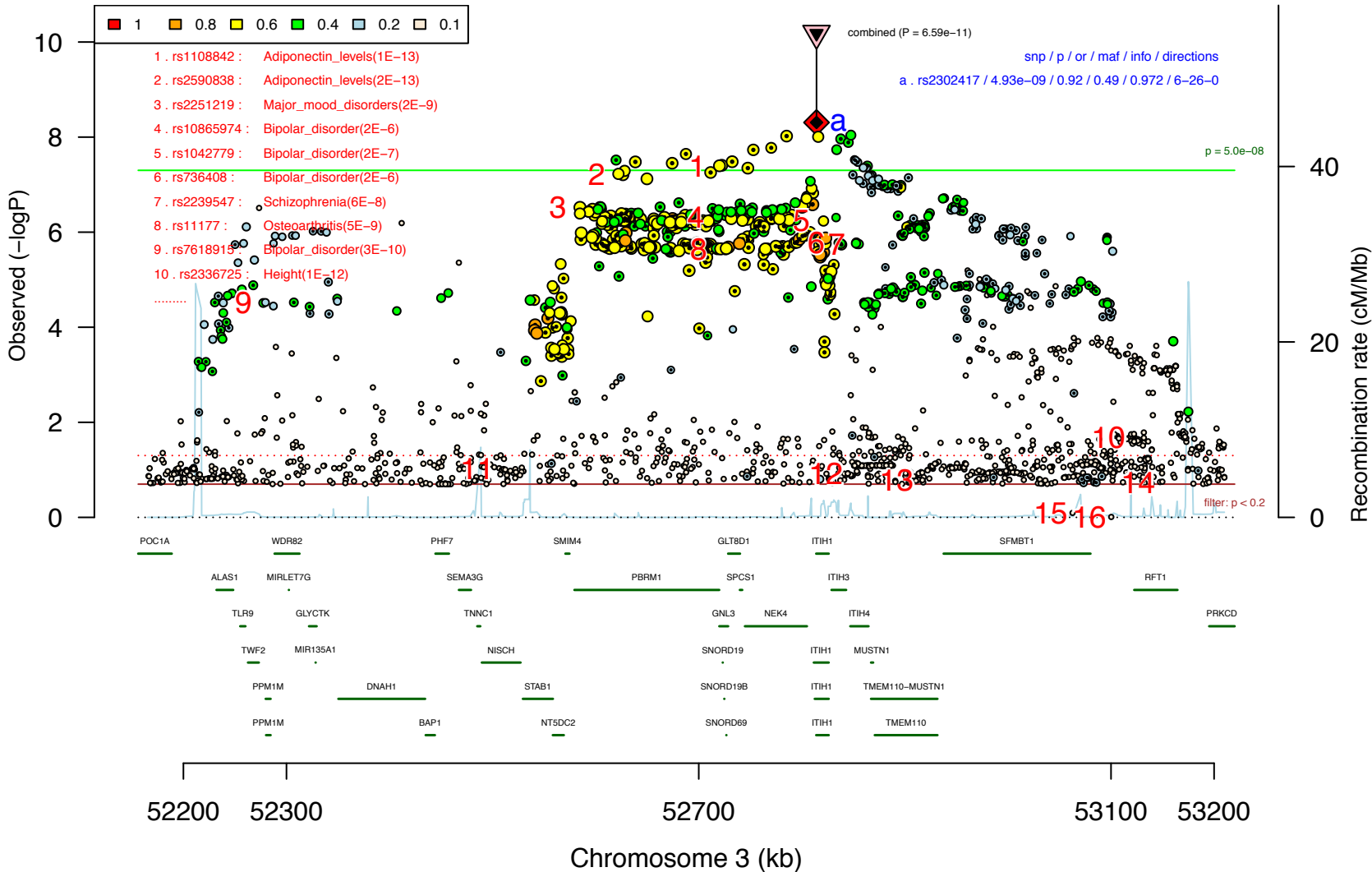
a . chr6_72519394_D / 3.13e-06 / 1.07 / 0.44 / 0.968 / 25-7-0



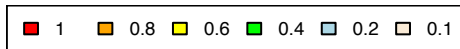
PGC_BIP32b_mds7a.2.chr2



PGC_BIP32b_mds7a.3.chr3

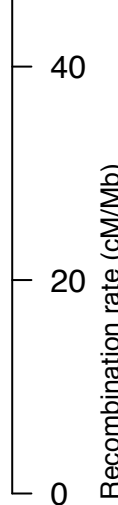
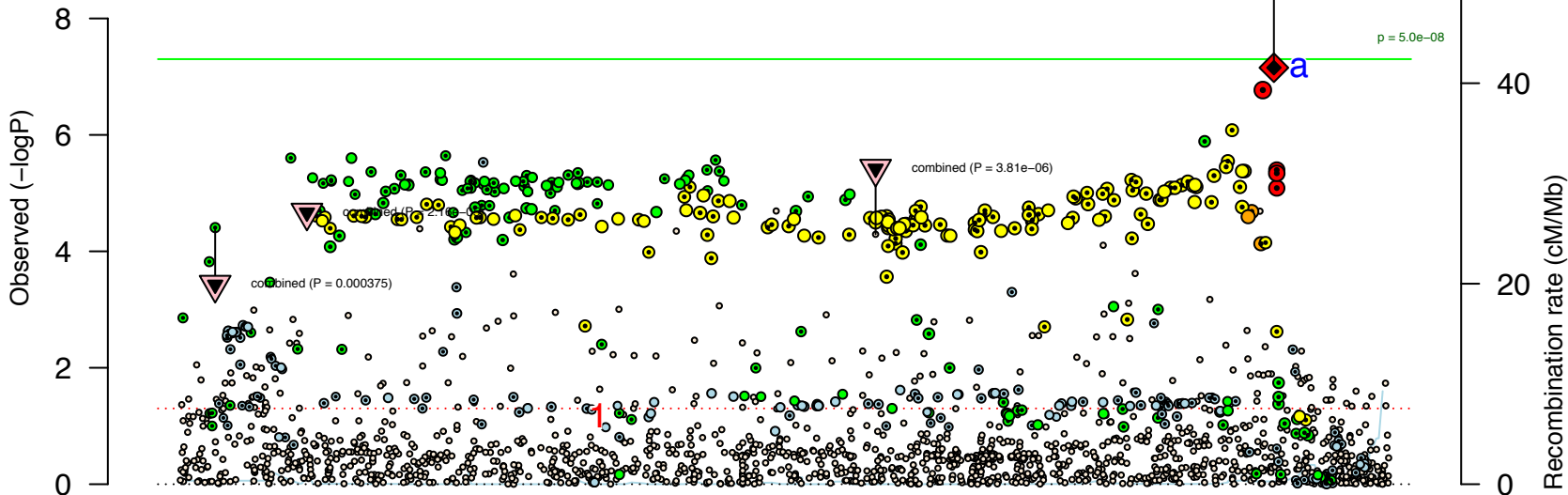


PGC_BIP32b_mds7a.7.chr7



1 .rs6968355 : Myopia(2E-7)

snp / p / or / info / direction
 a . rs73188321 / 7.02e-08 / 0.92 / 0.83 / 0.83 / 6-26-0
 combined (P = 1.06e-09)



LOC100216546

LOC100216545



SRPK2



104600

104800

105000

105100

Chromosome 7 (kb)

PGC_BIP32b_mds7a.19.chr19

