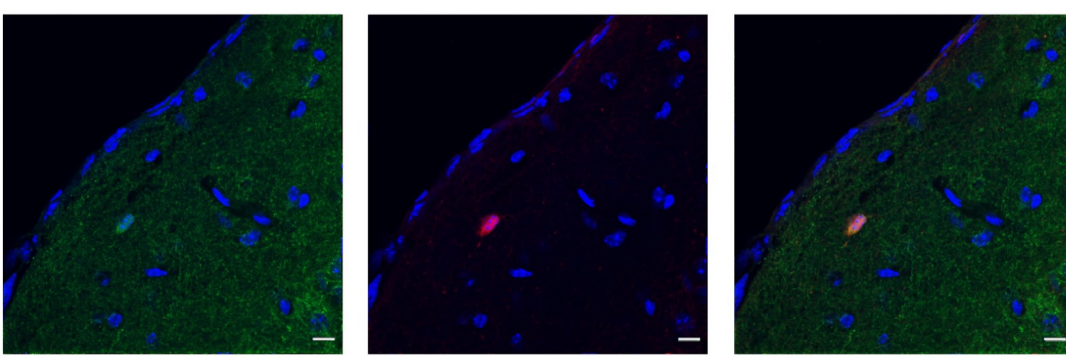


## Supplementary figures

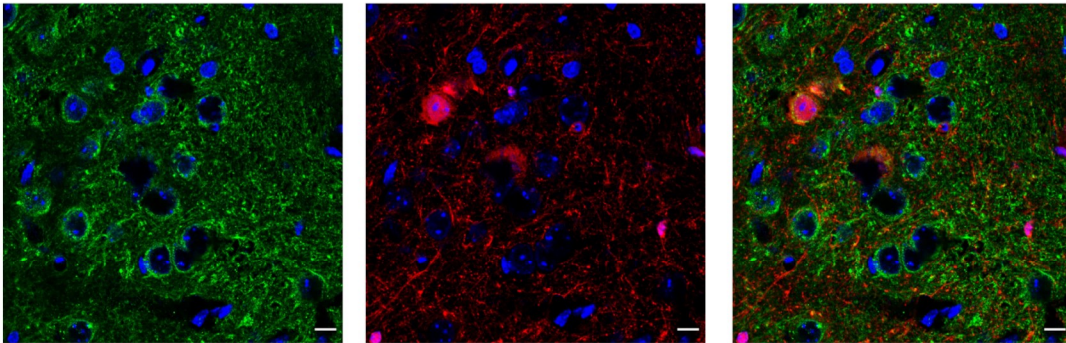
Figures present colocalization of particular SSTRs (SSTR1-SSTR5) with three analysed types of interneurons (PV, SST and VIP) in different layers of mouse somatosensory cortex.

Each panel consists of confocal microscopy images of representative coronal sections. First column shows SSTRs in green + DAPI in blue; Second column shows INs in red + DAPI in blue; Third column presents colocalizations. Scale bars: 10  $\mu\text{m}$ .

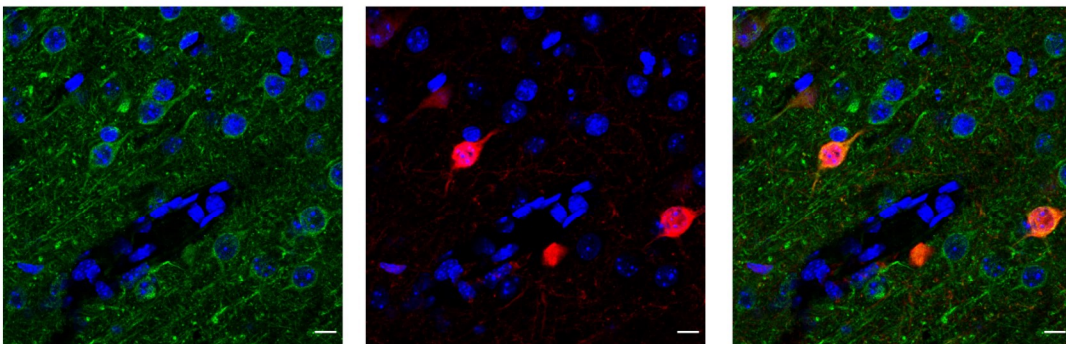
SSTR1/PV/DAPI



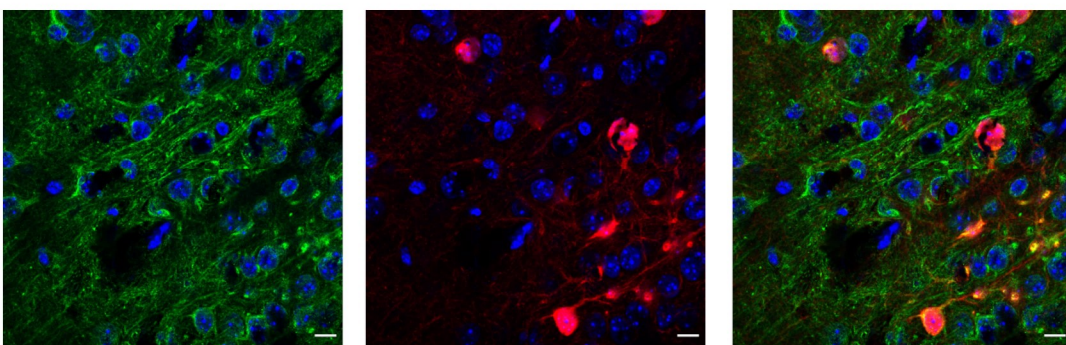
L1



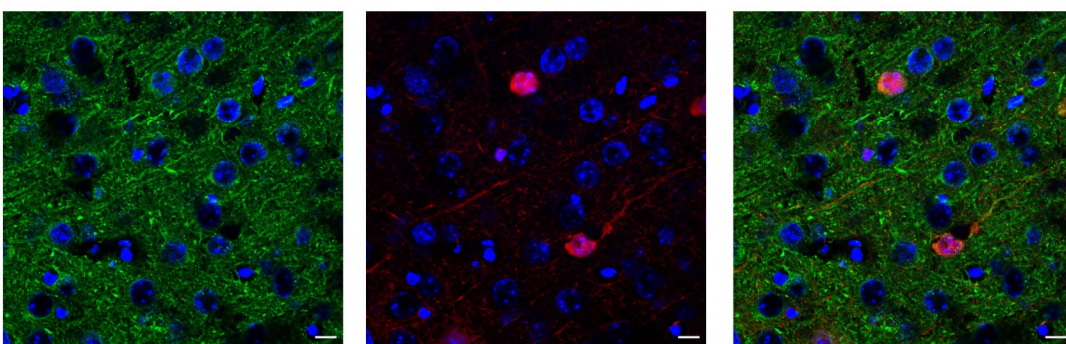
L2



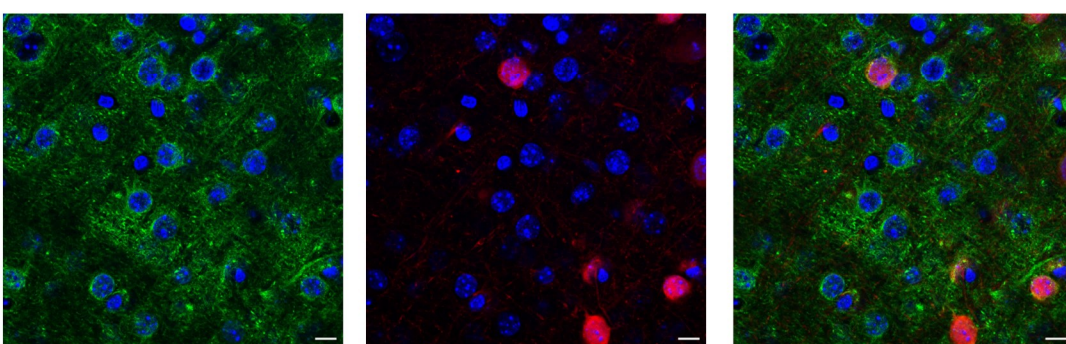
L3



L4



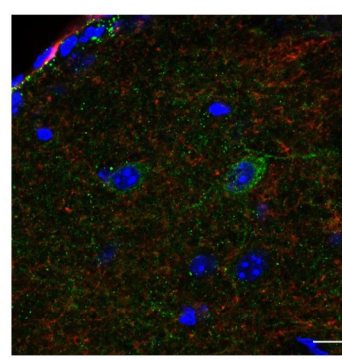
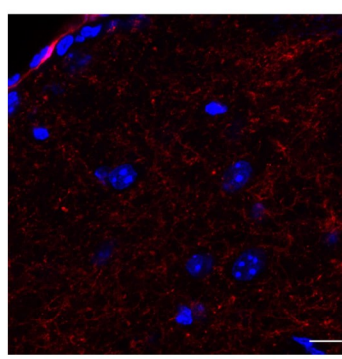
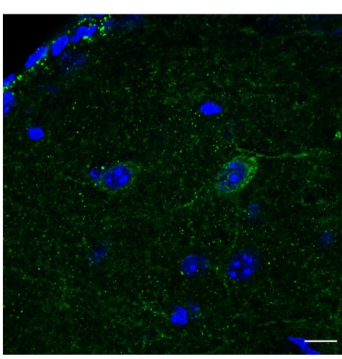
L5



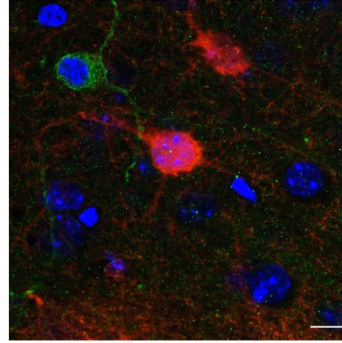
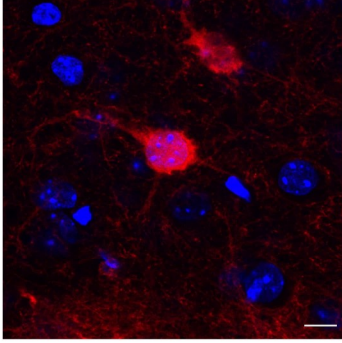
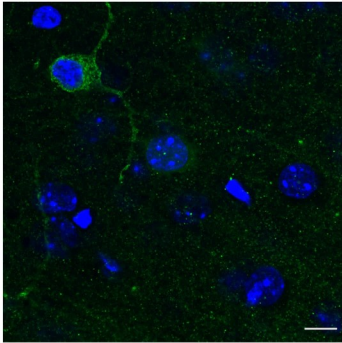
L6



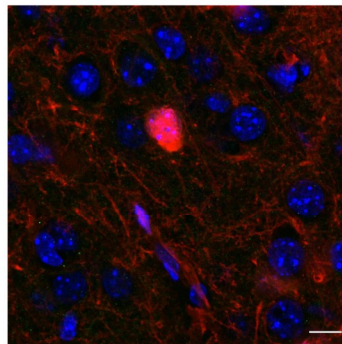
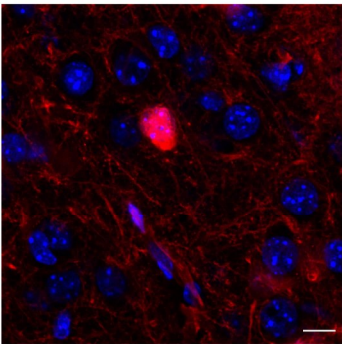
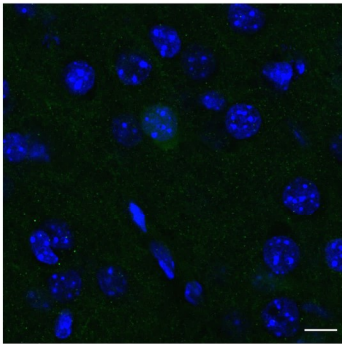
SSTR2/PV/DAPI



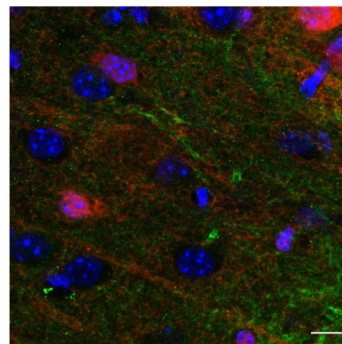
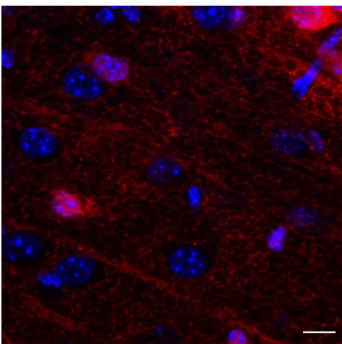
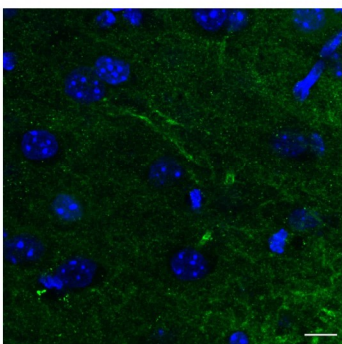
L1



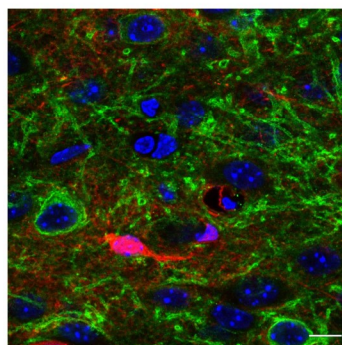
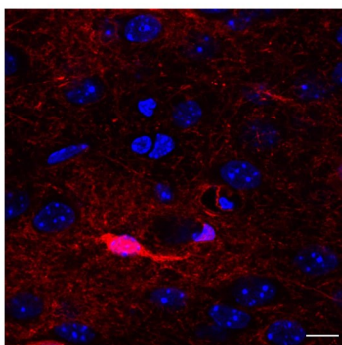
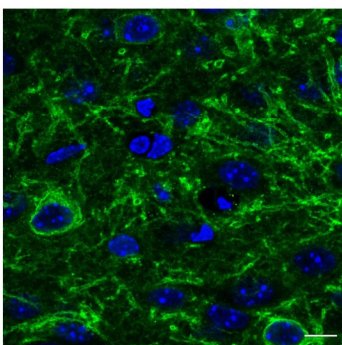
L2



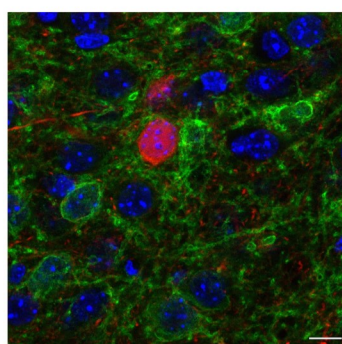
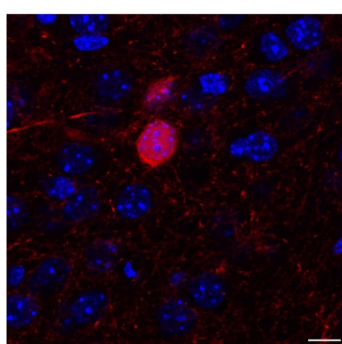
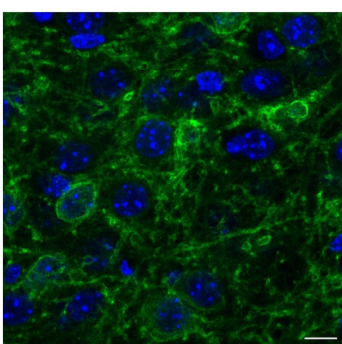
L3



L4



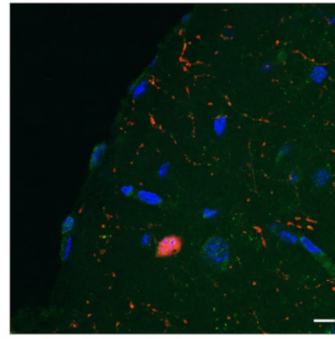
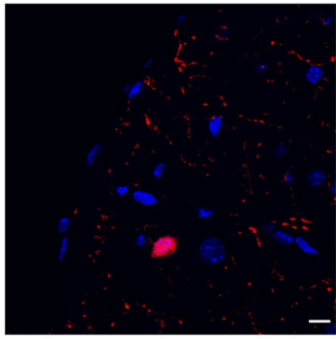
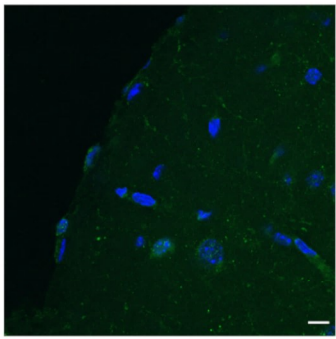
L5



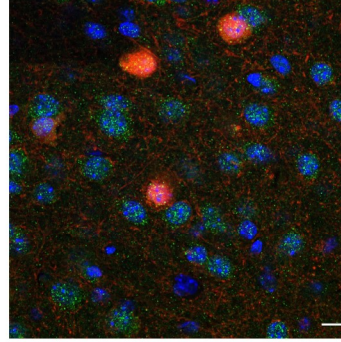
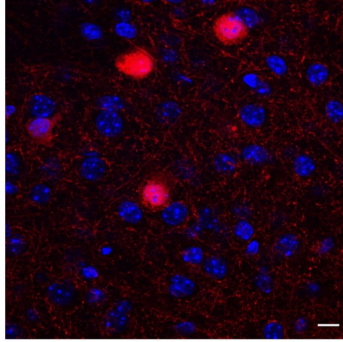
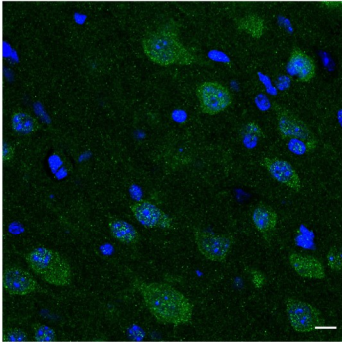
L6



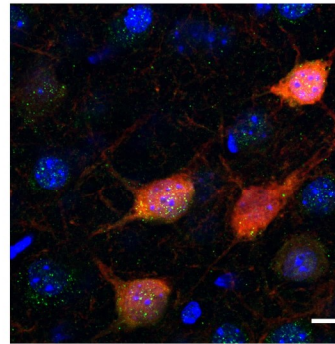
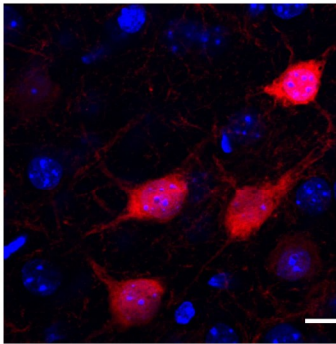
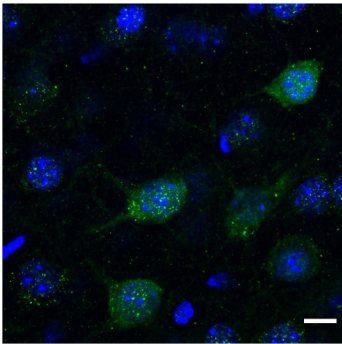
SSTR3/PV/DAPI



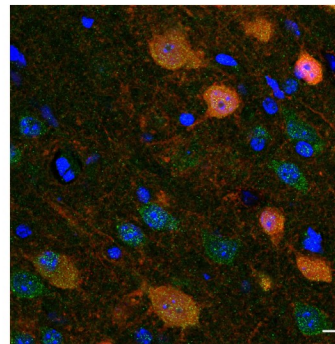
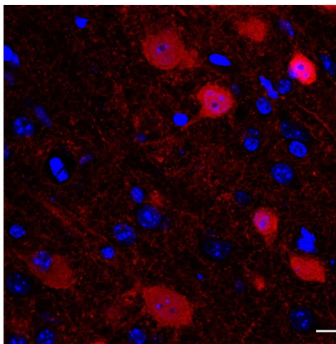
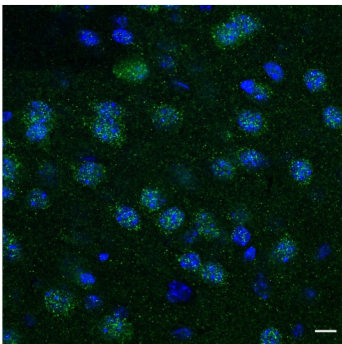
L1



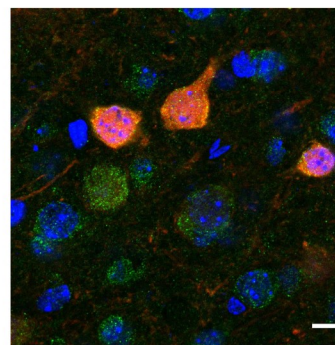
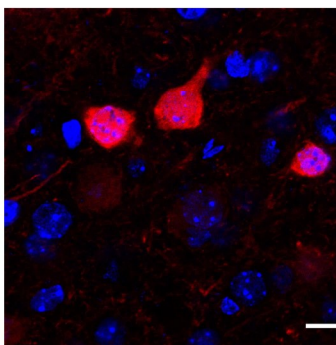
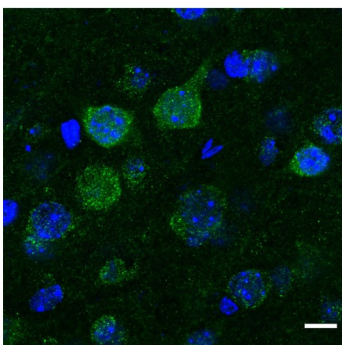
L2



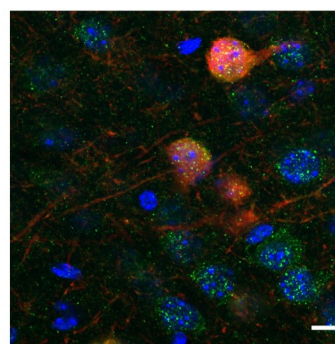
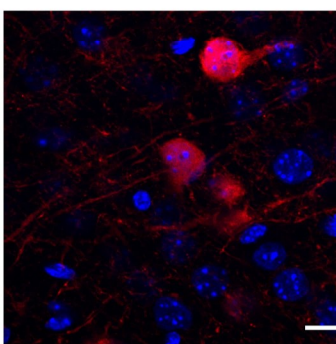
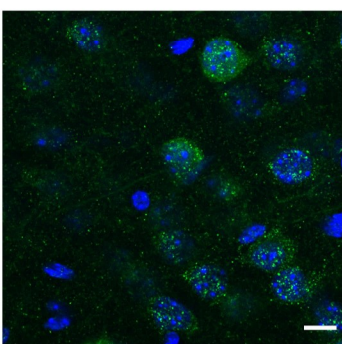
L3



L4



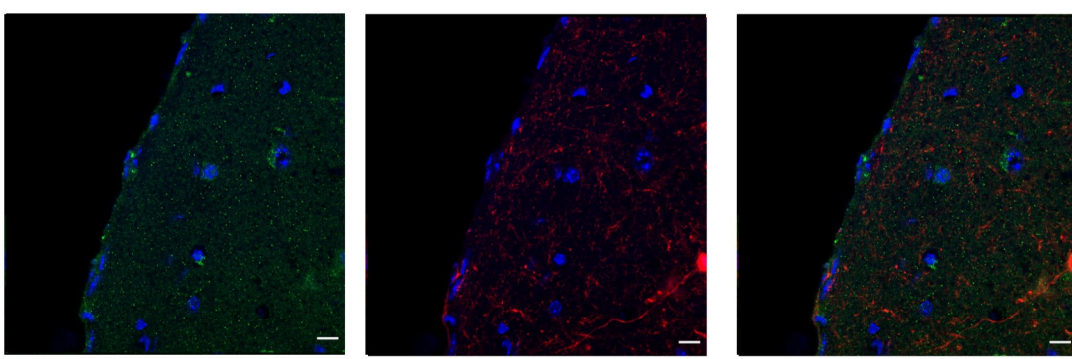
L5



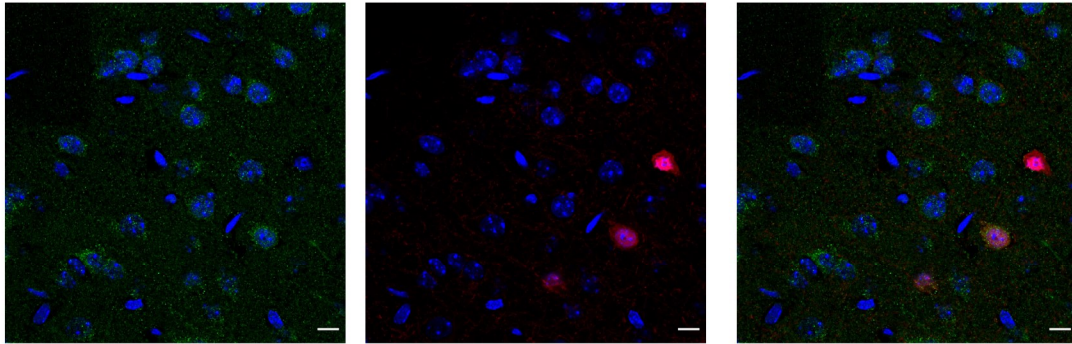
L6



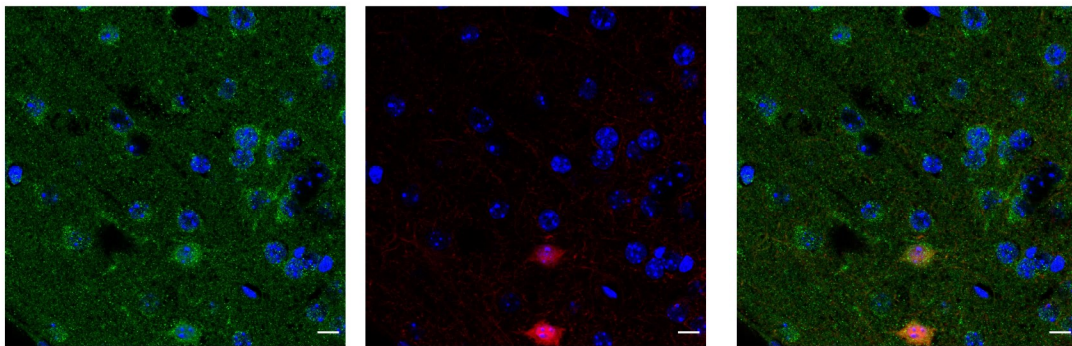
SSTR4/PV/DAPI



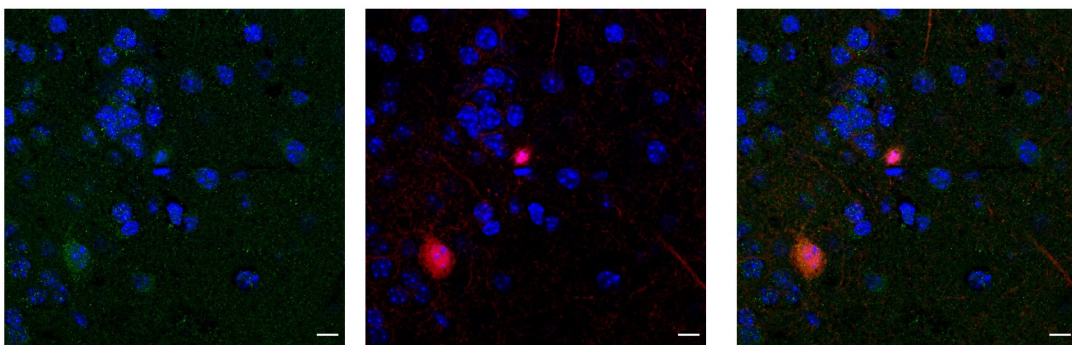
L1



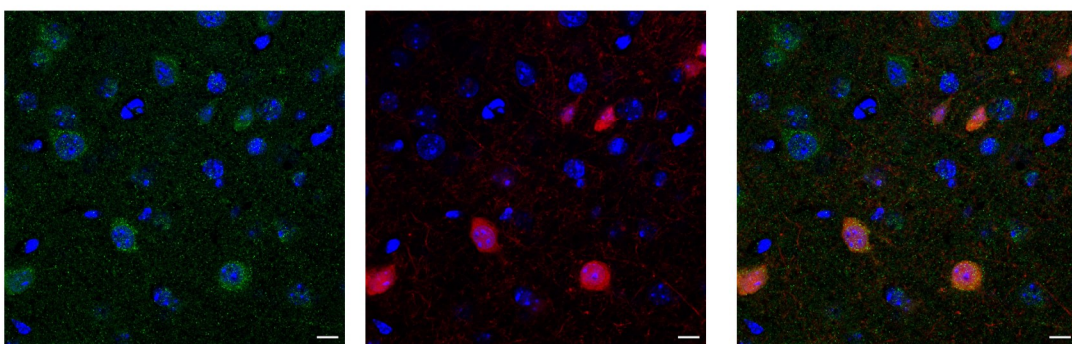
L2



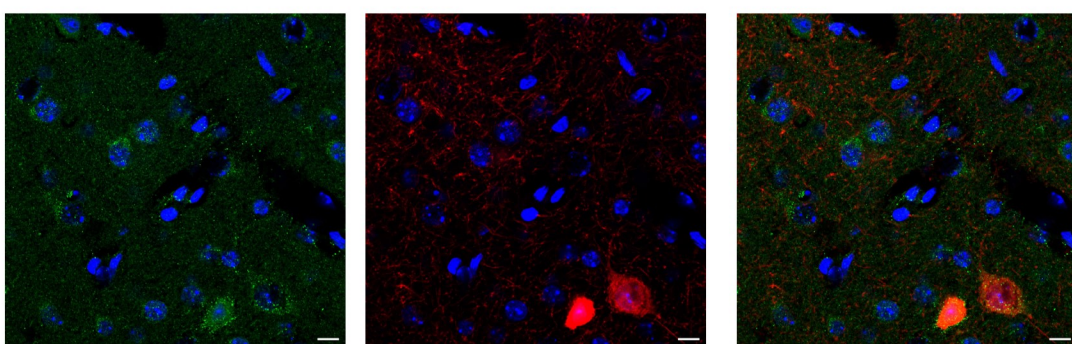
L3



L4



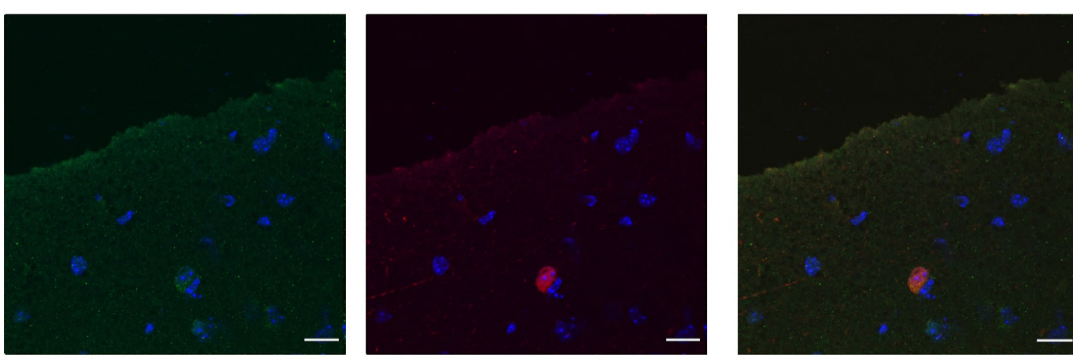
L5



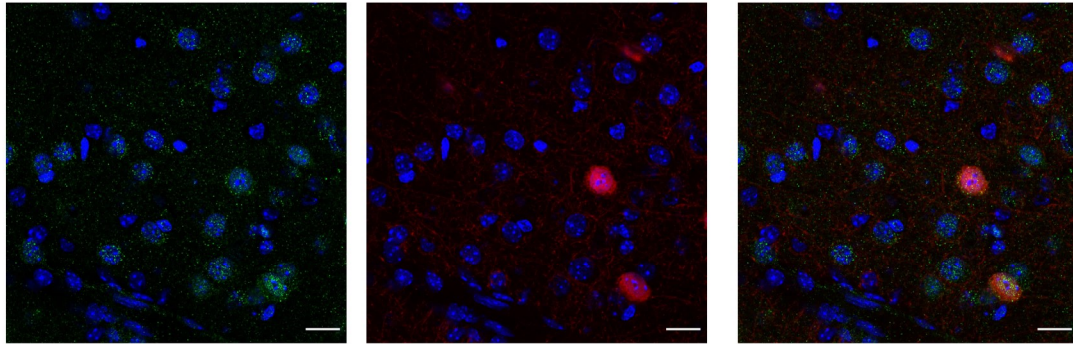
L6



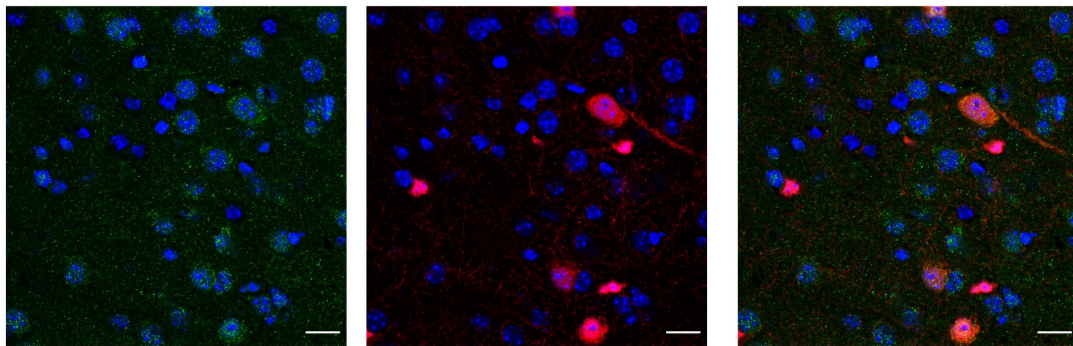
SSTR5/PV/DAPI



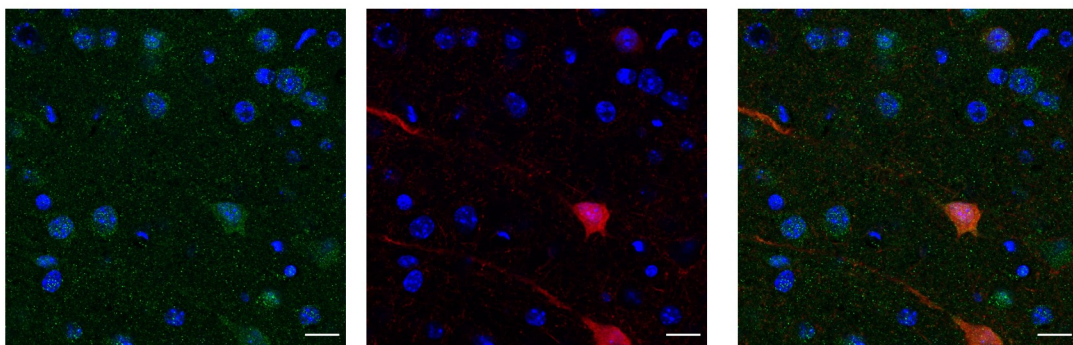
L1



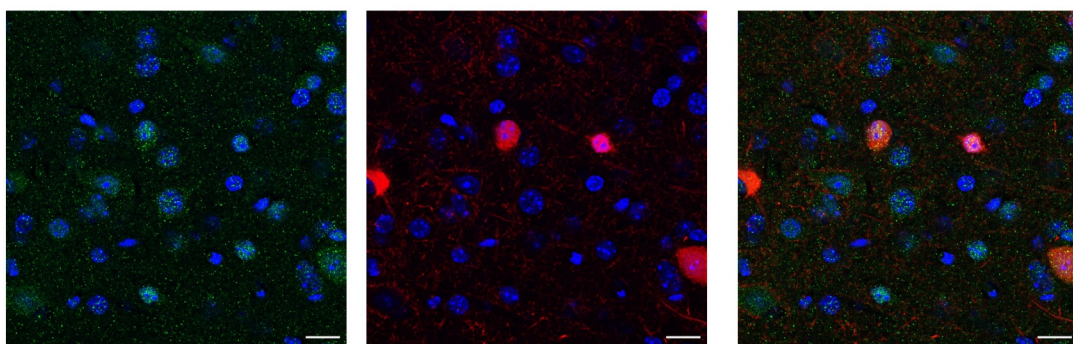
L2



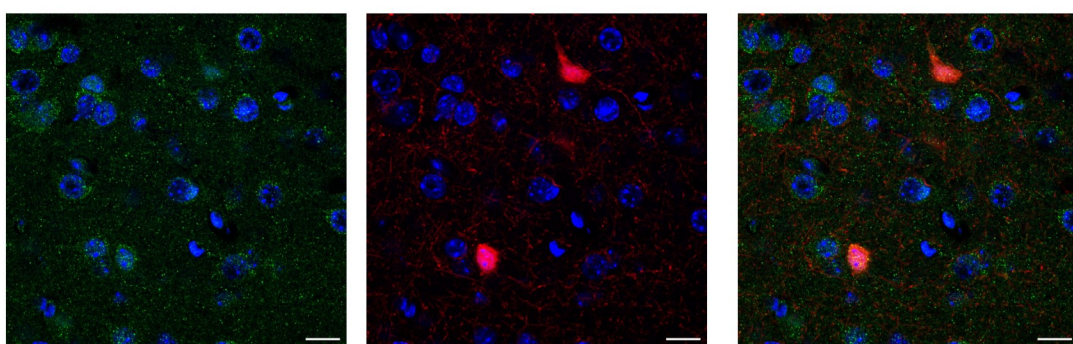
L3



L4



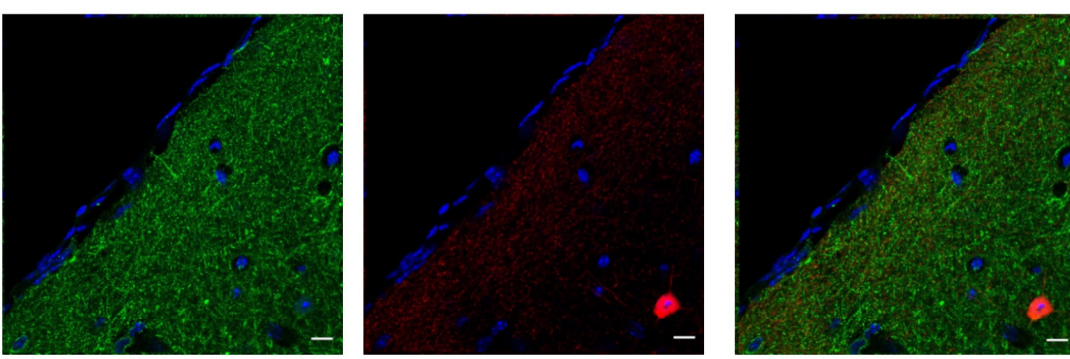
L5



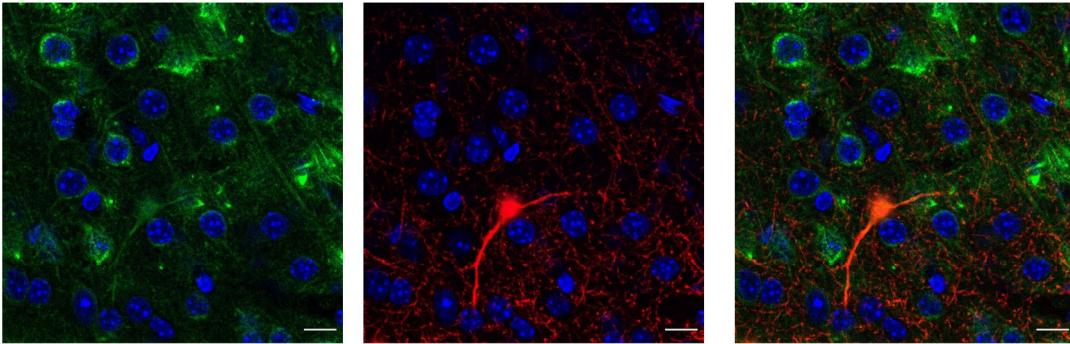
L6



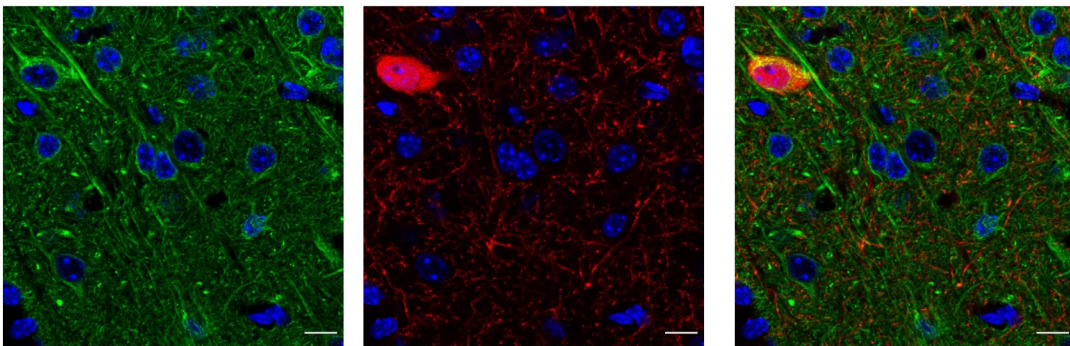
SSTR1/SST/DAPI



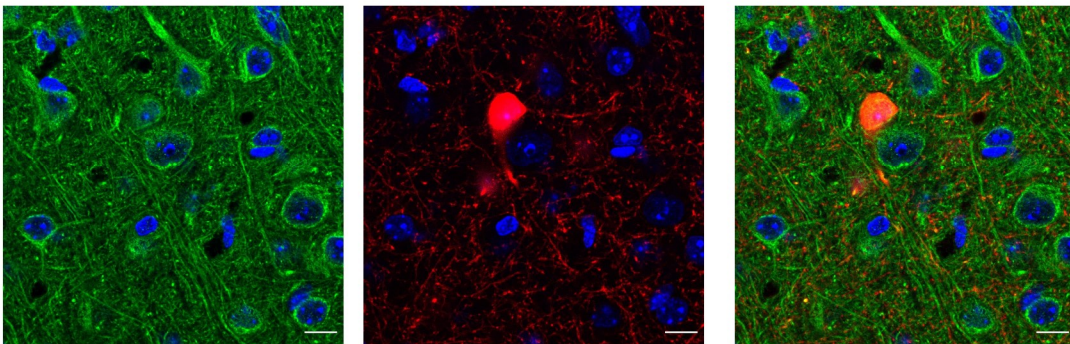
L1



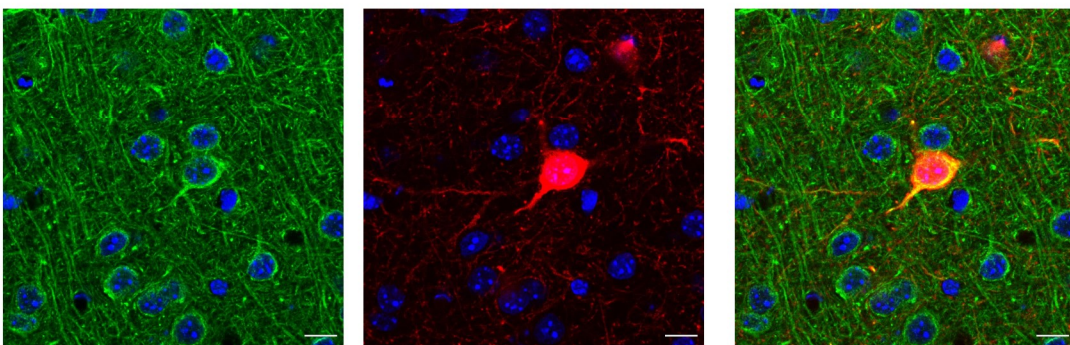
L2



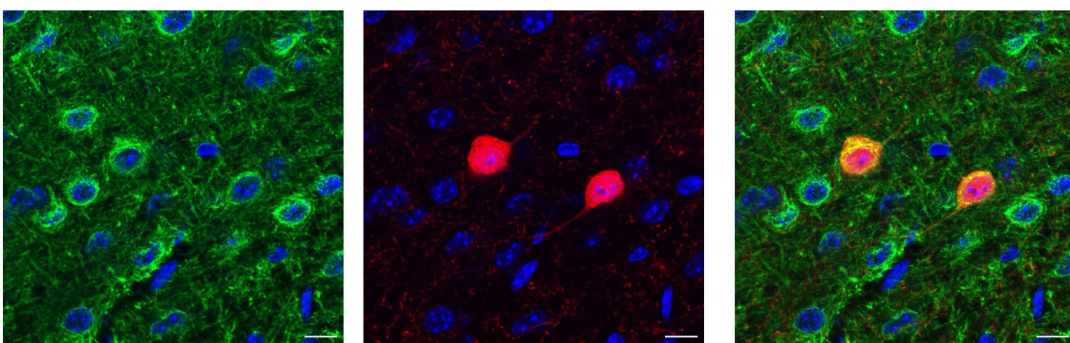
L3



L4



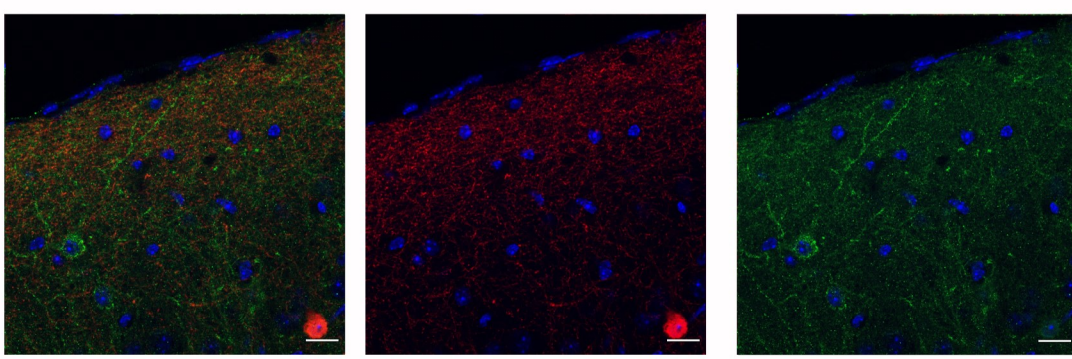
L5



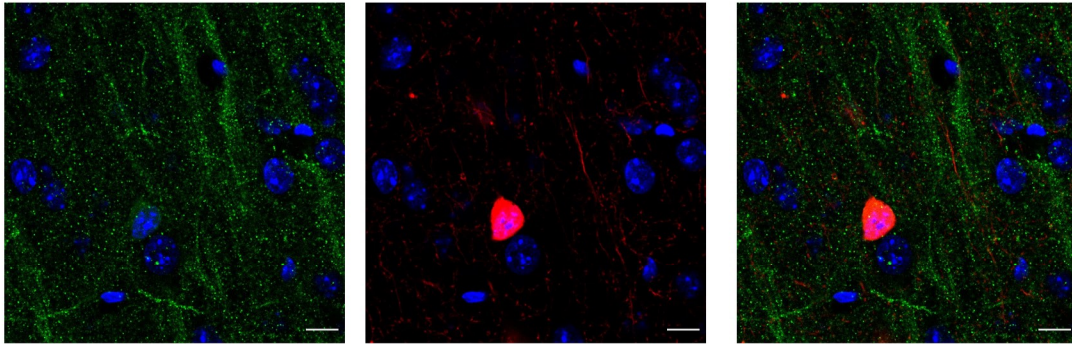
L6



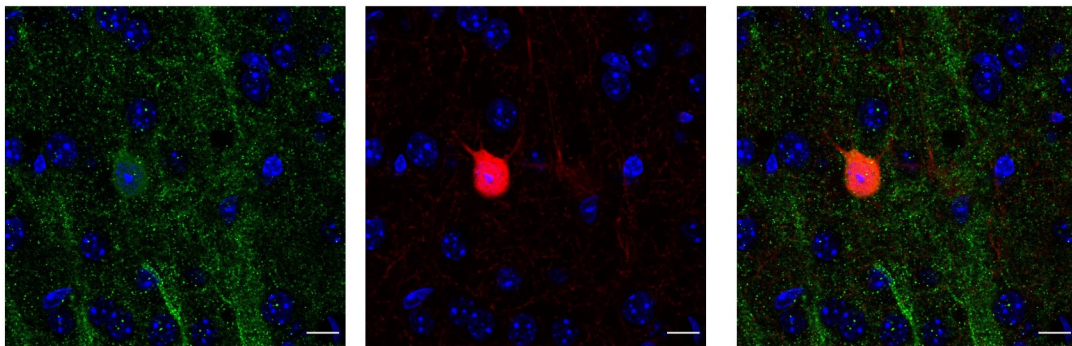
SSTR2/SST/DAPI



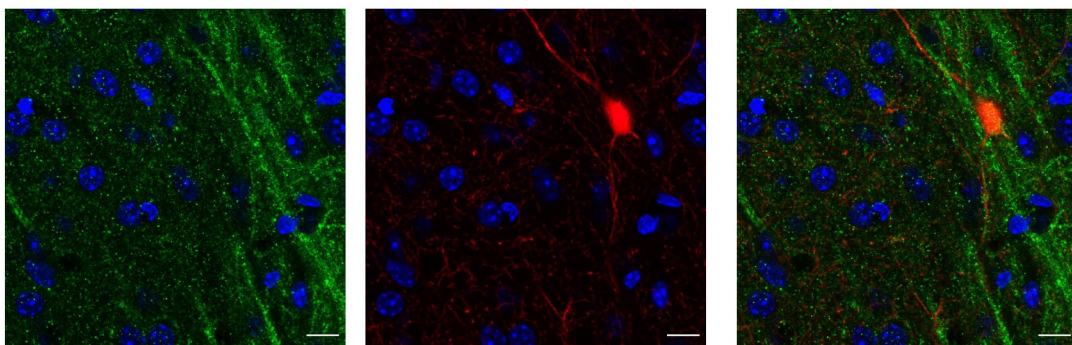
L1



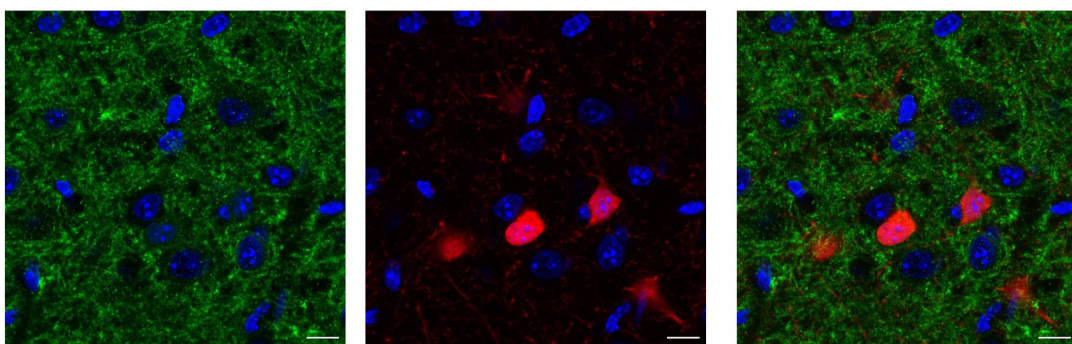
L2



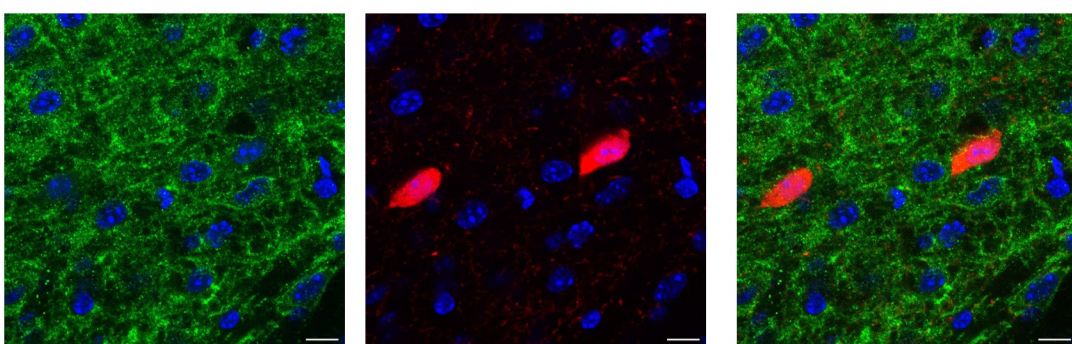
L3



L4



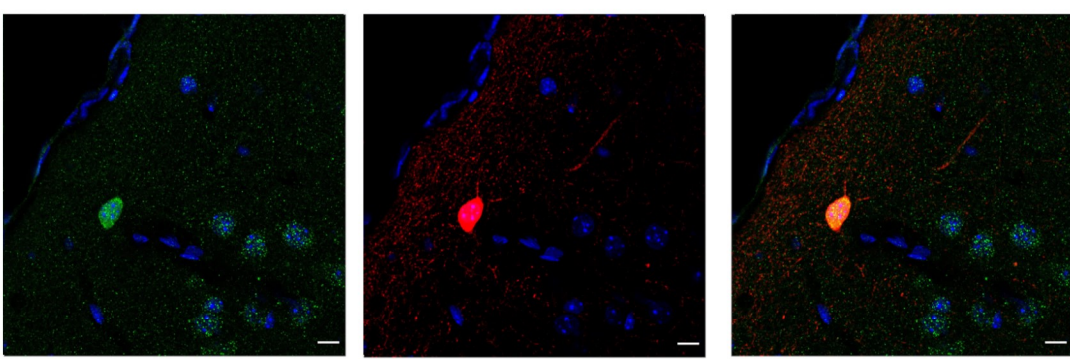
L5



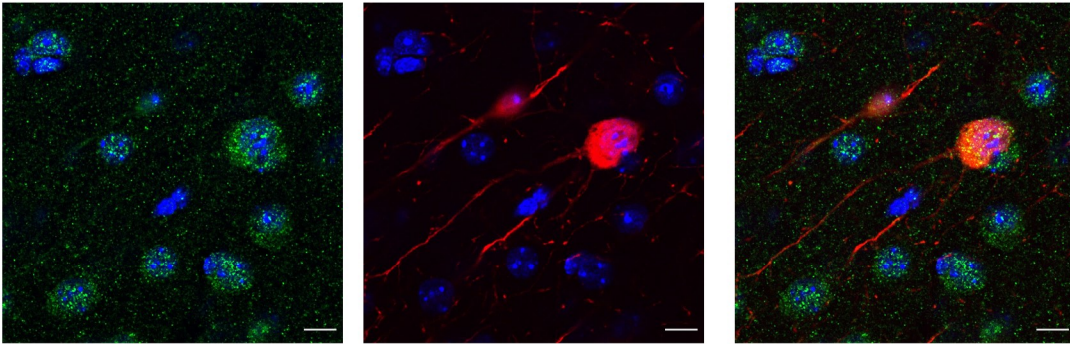
L6



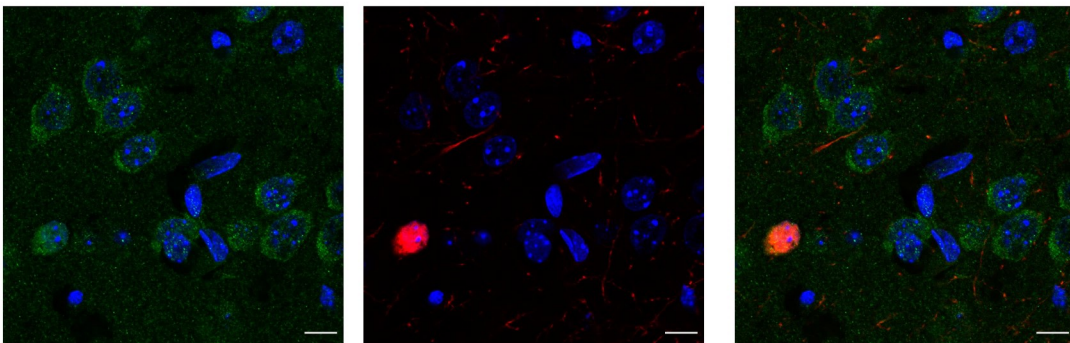
SSTR3/SST/DAPI



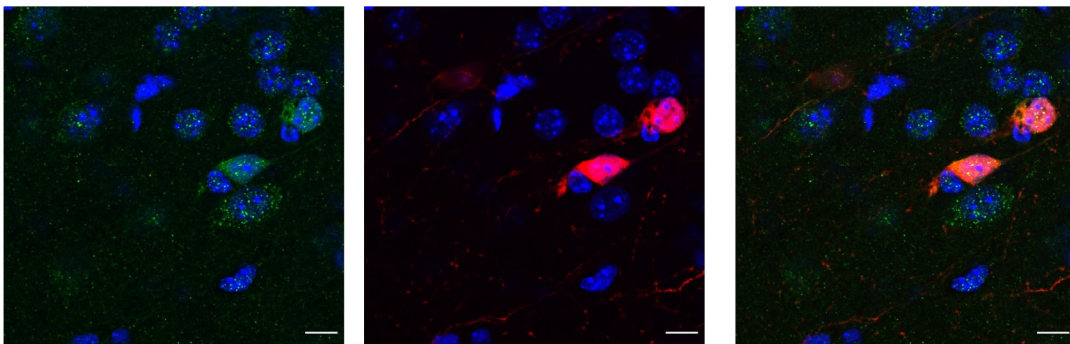
L1



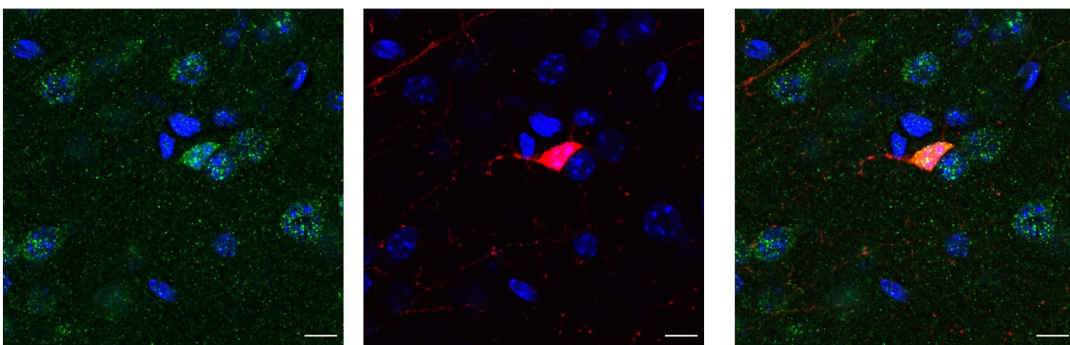
L2



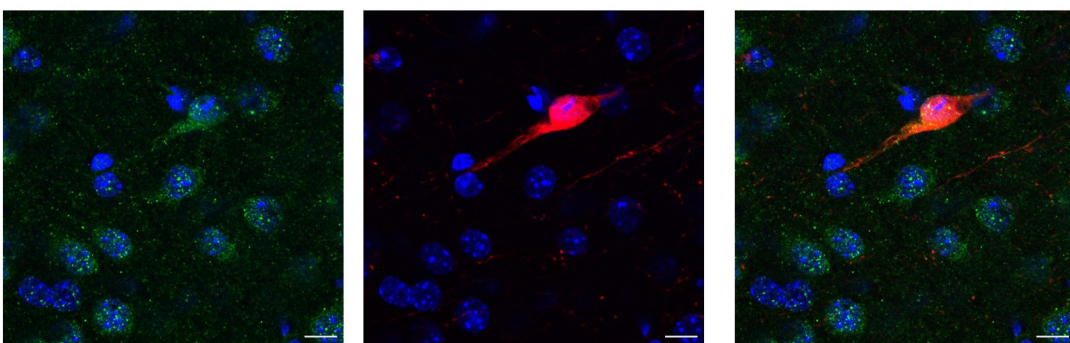
L3



L4



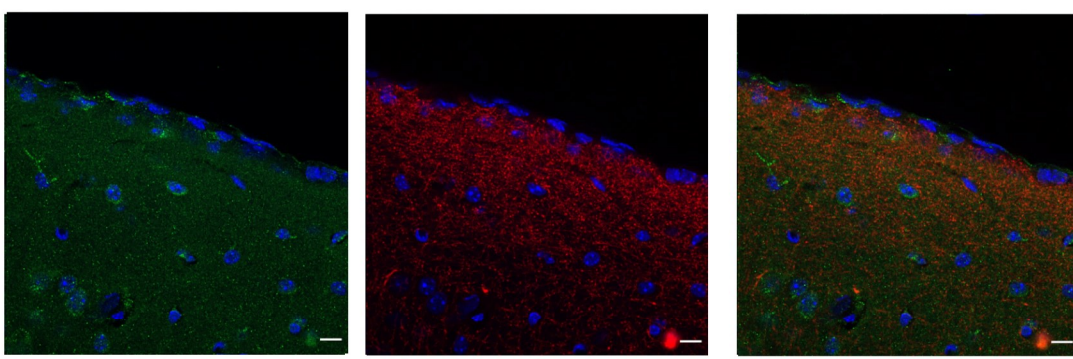
L5



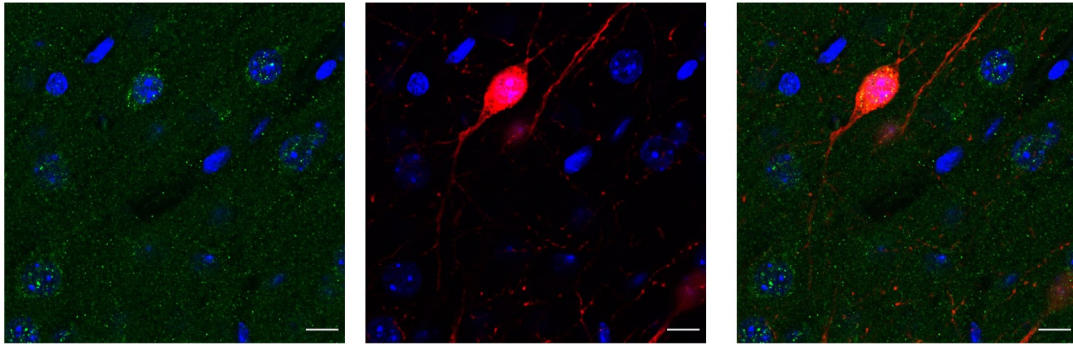
L6



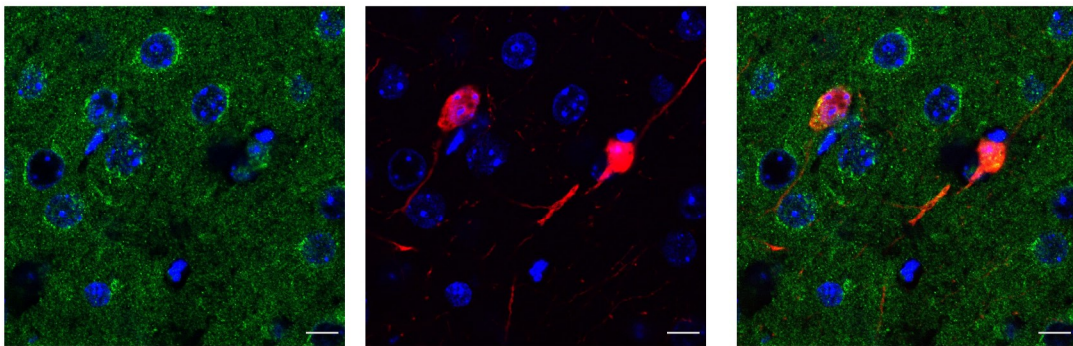
SSTR4/SST/DAPI



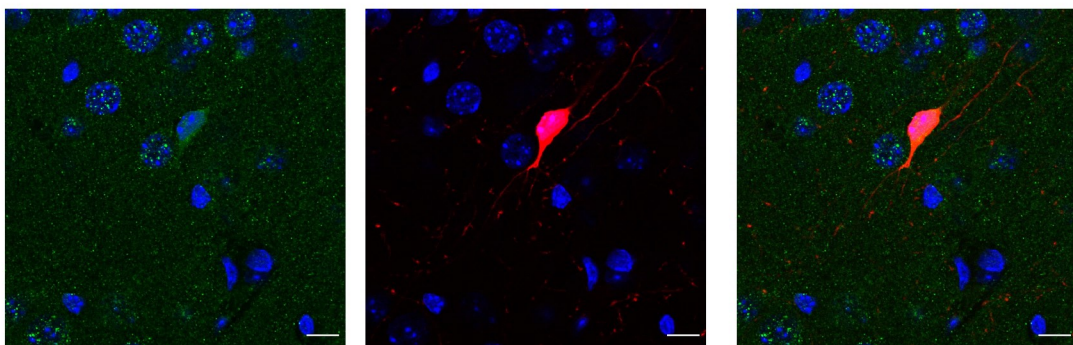
L1



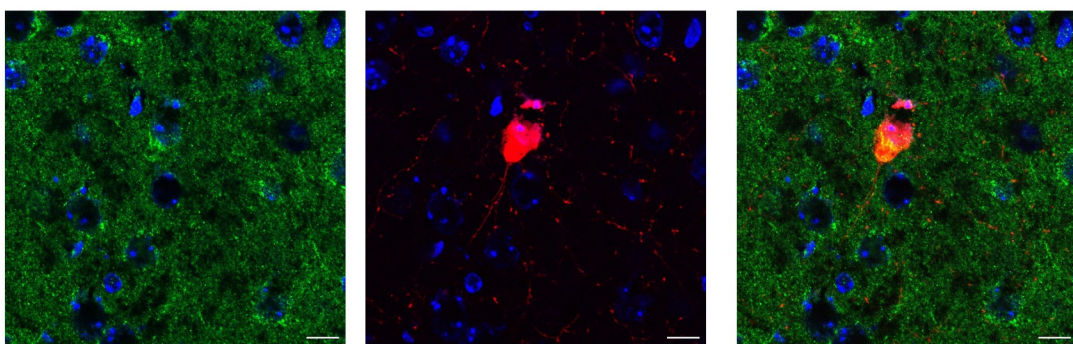
L2



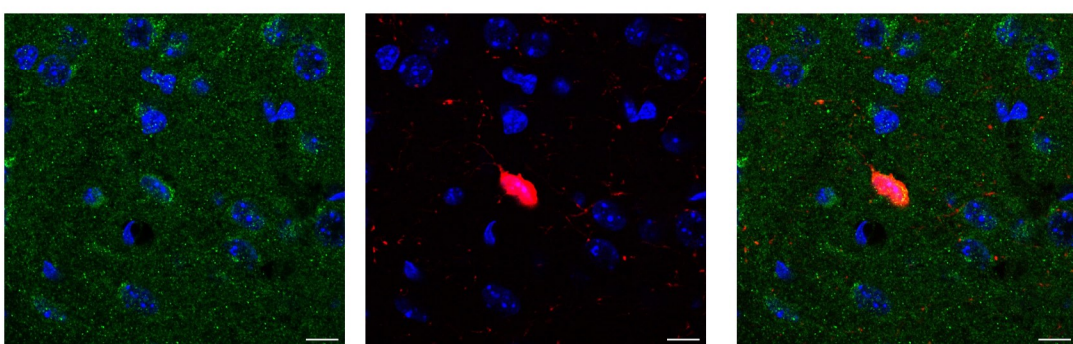
L3



L4



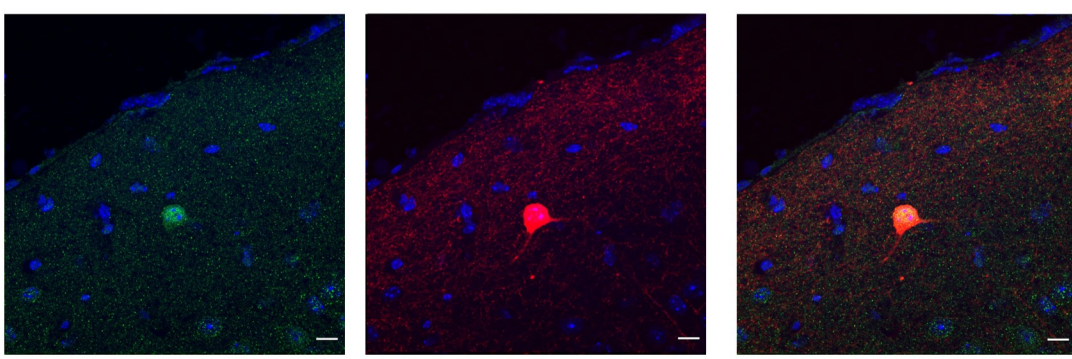
L5



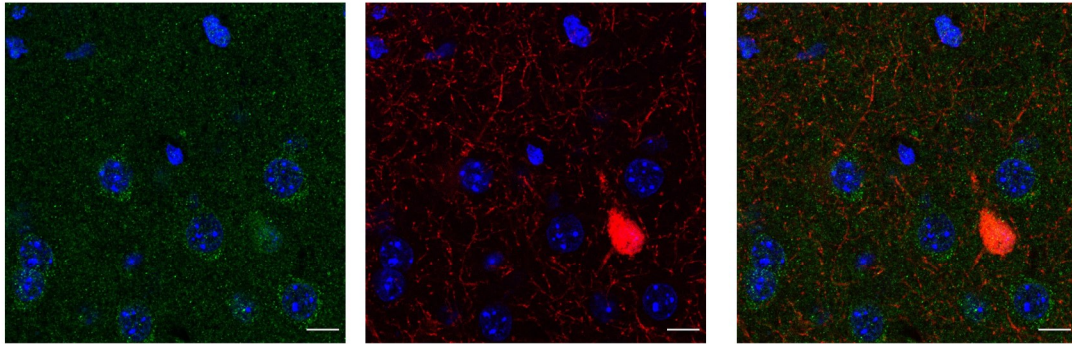
L6



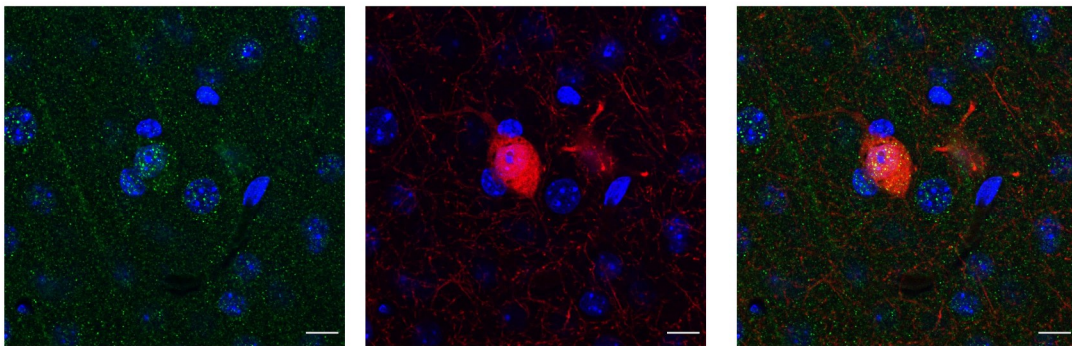
SSTR5/SST/DAPI



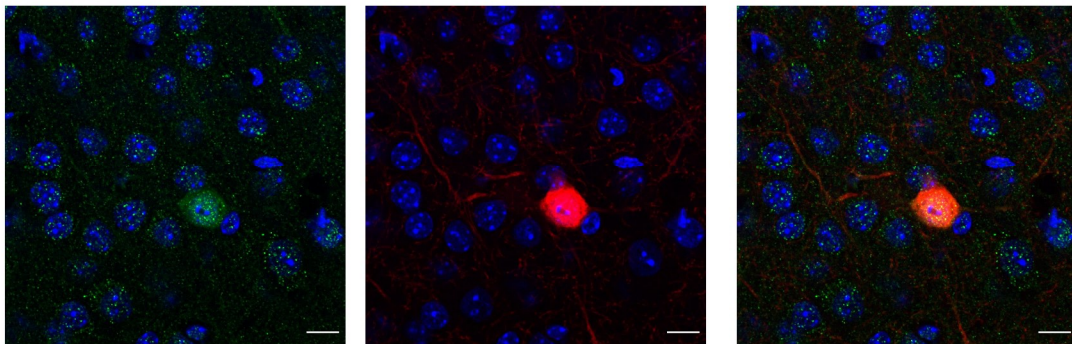
L1



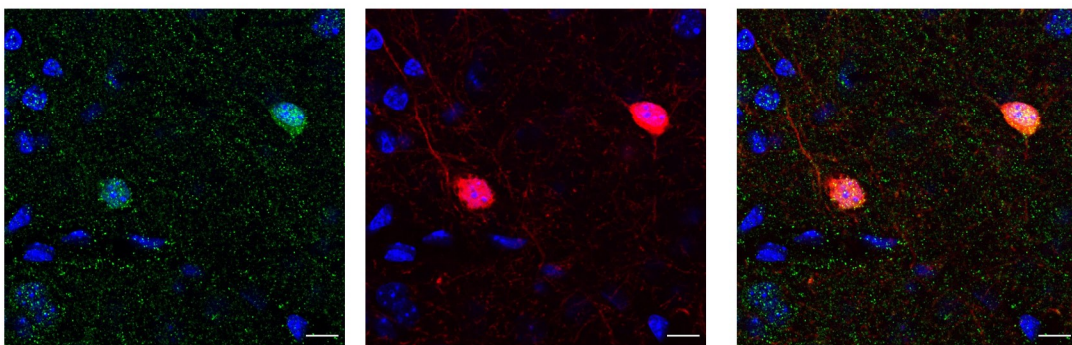
L2



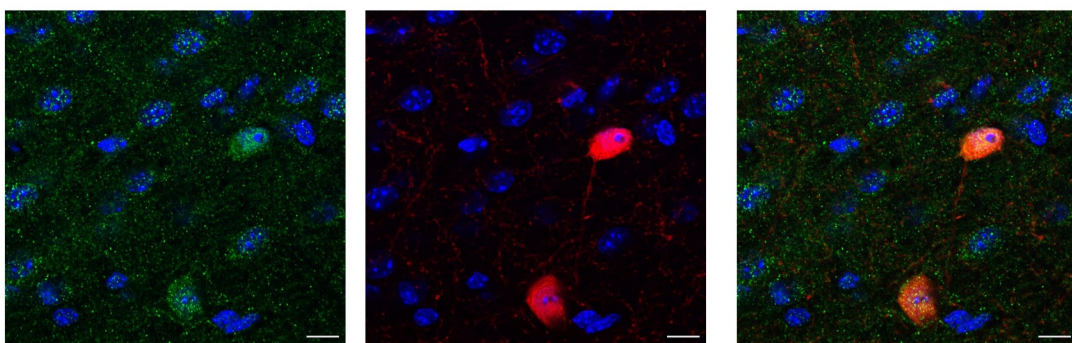
L3



L4



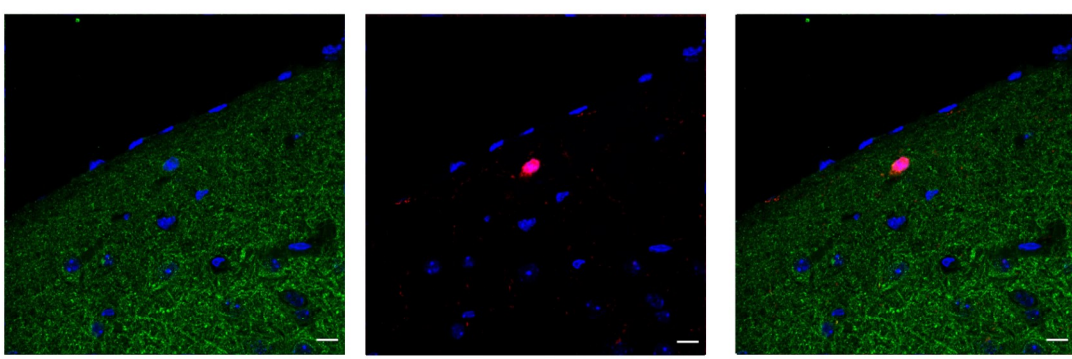
L5



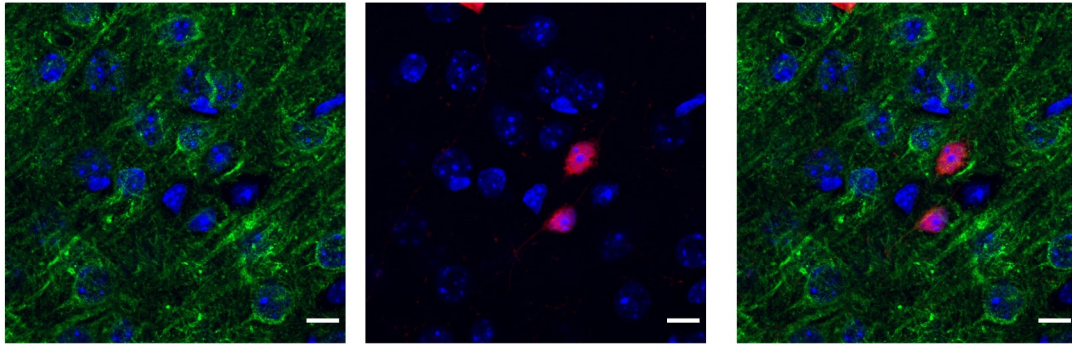
L6



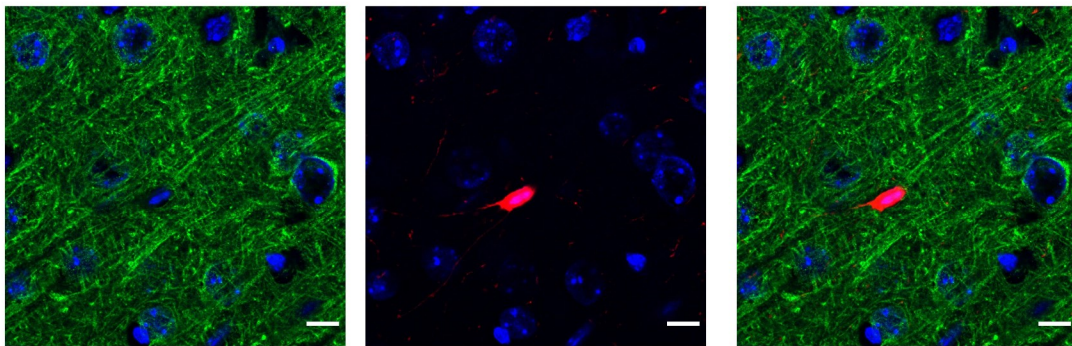
SSTR1/VIP/DAPI



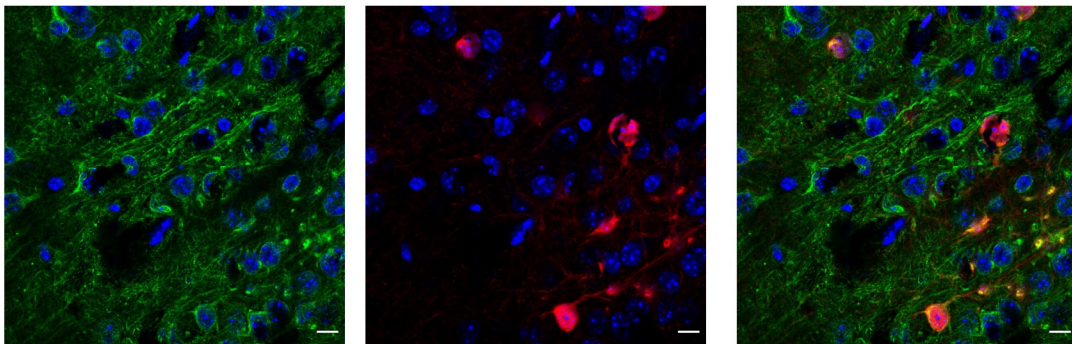
L1



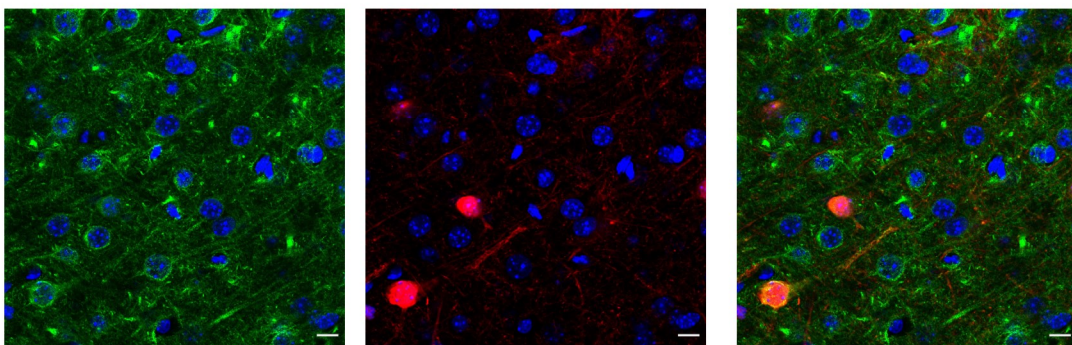
L2



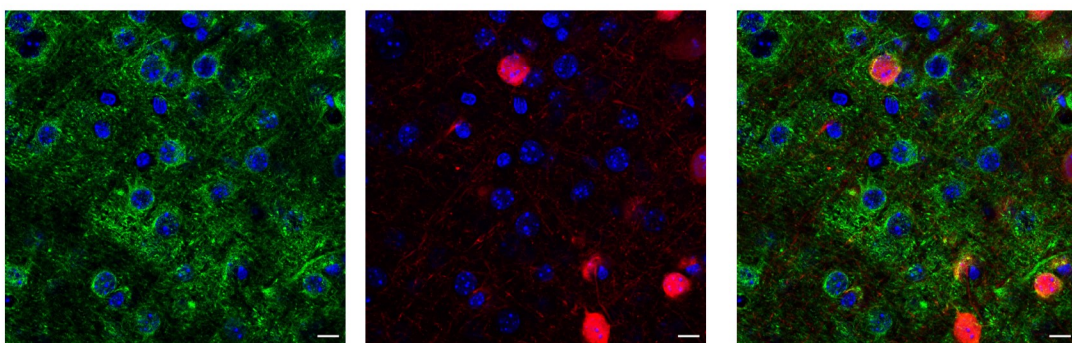
L3



L4



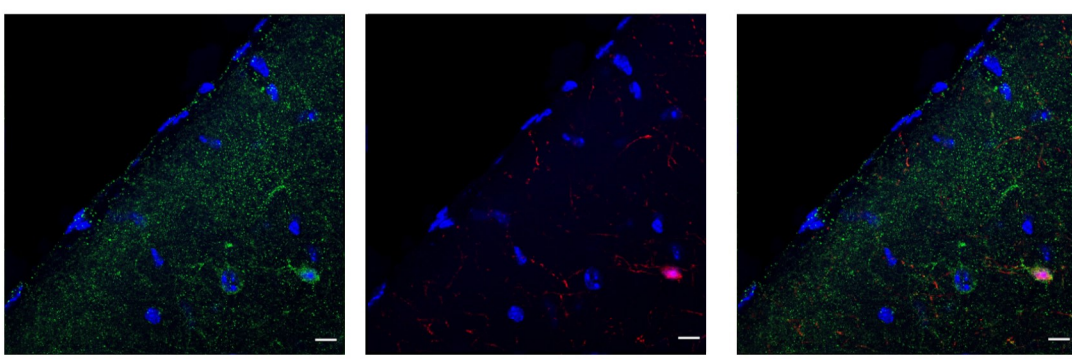
L5



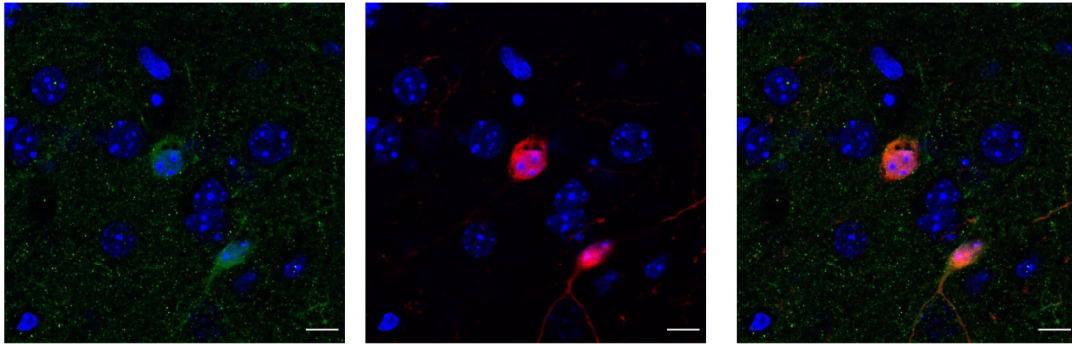
L6



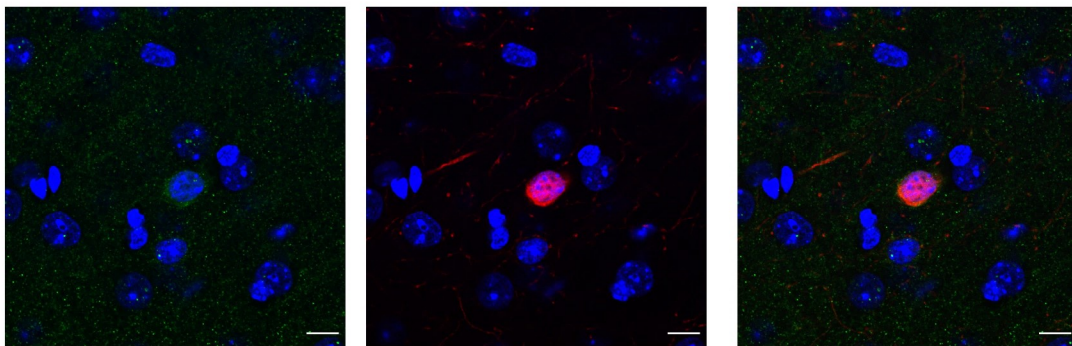
SSTR2/VIP/DAPI



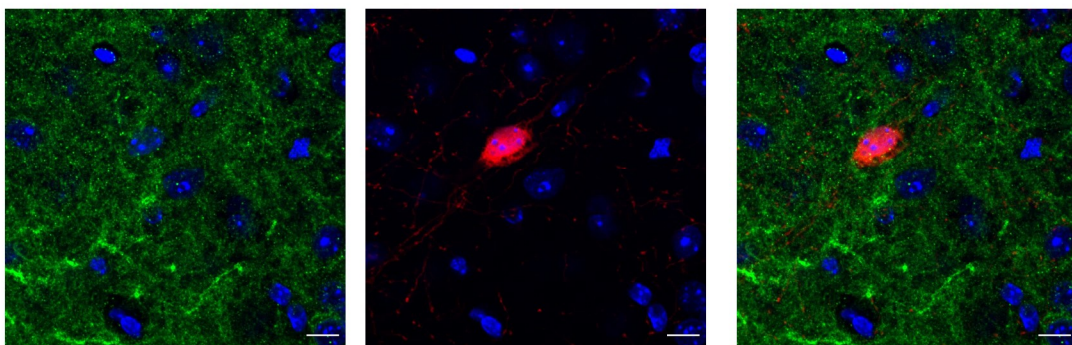
L1



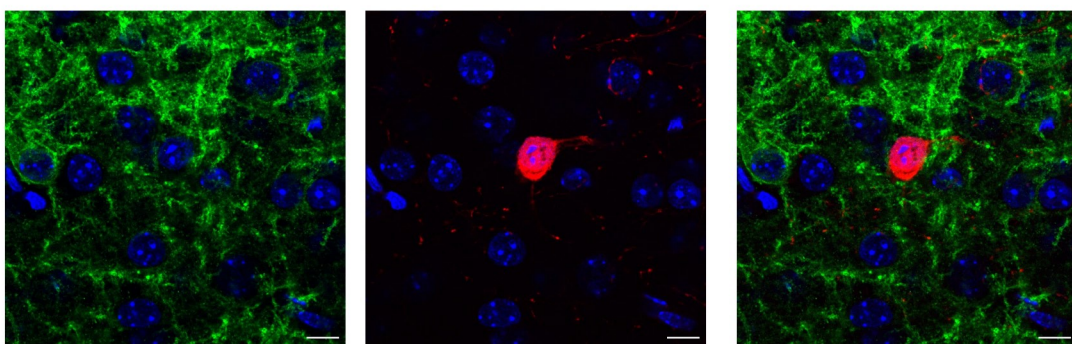
L2



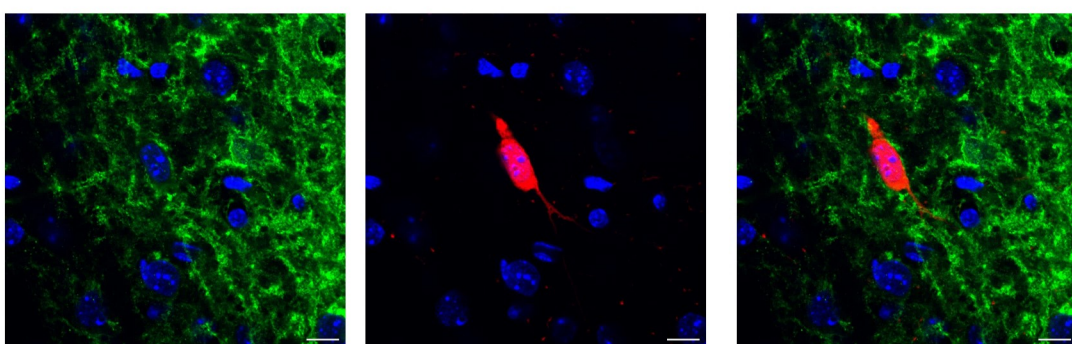
L3



L4



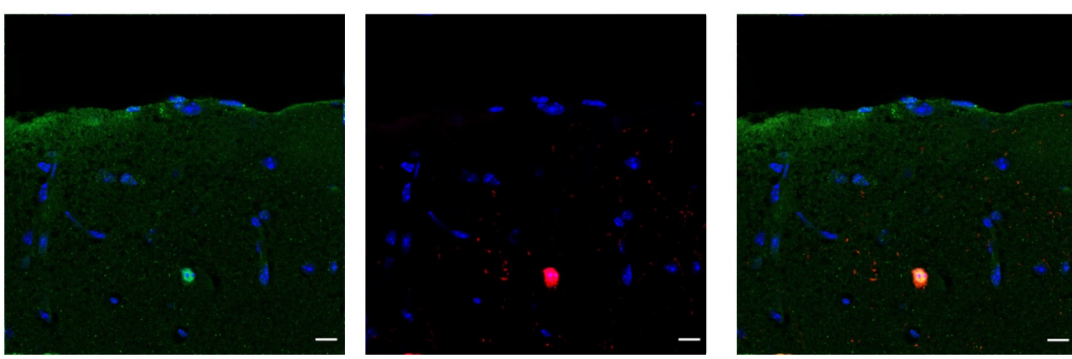
L5



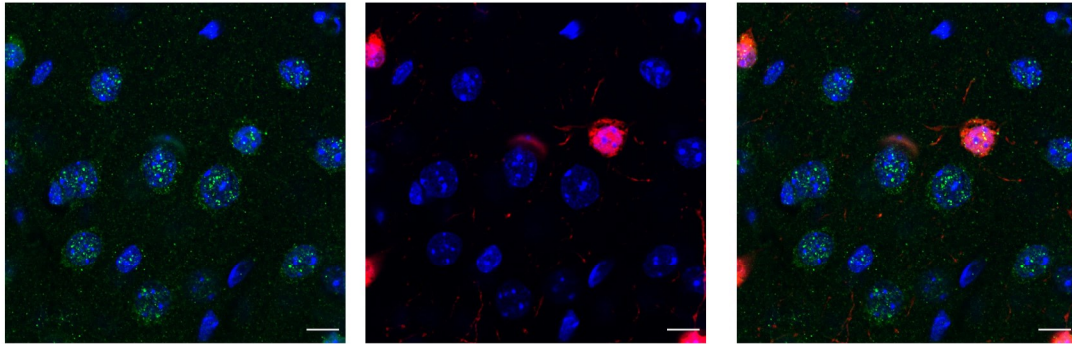
L6



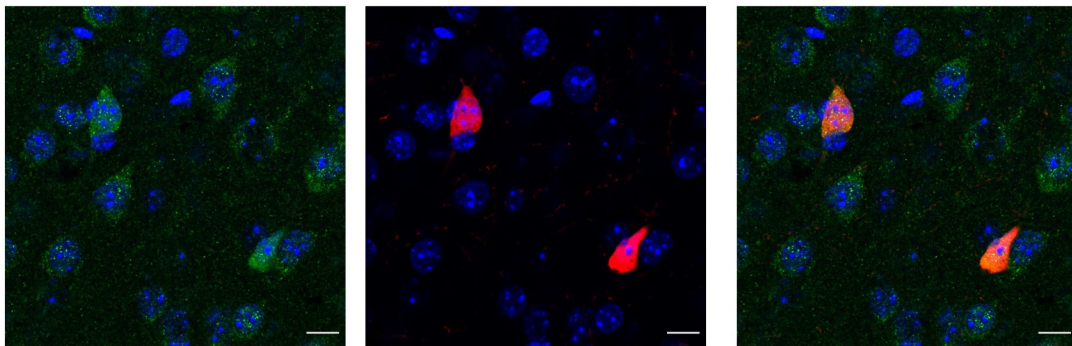
SSTR3/VIP/DAPI



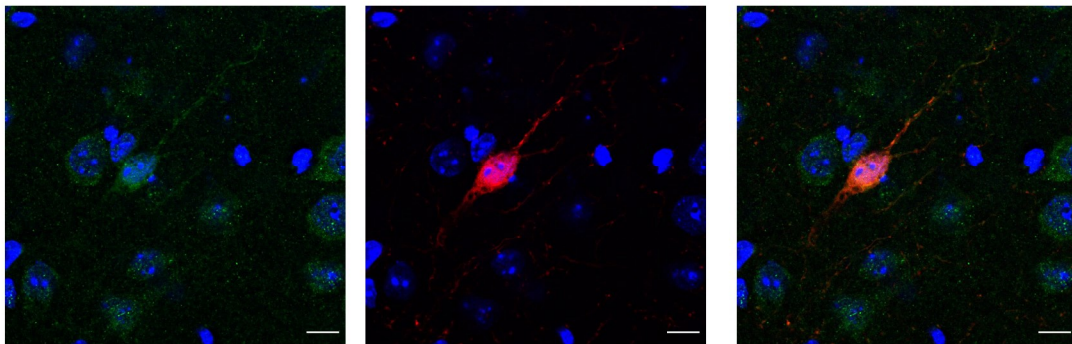
L1



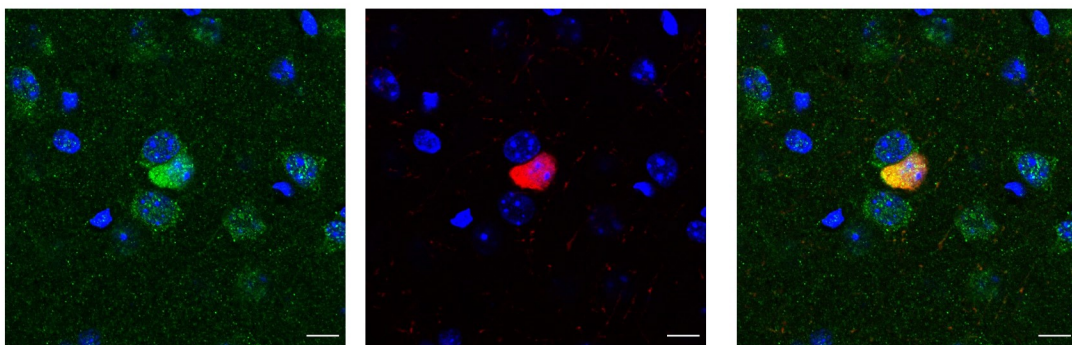
L2



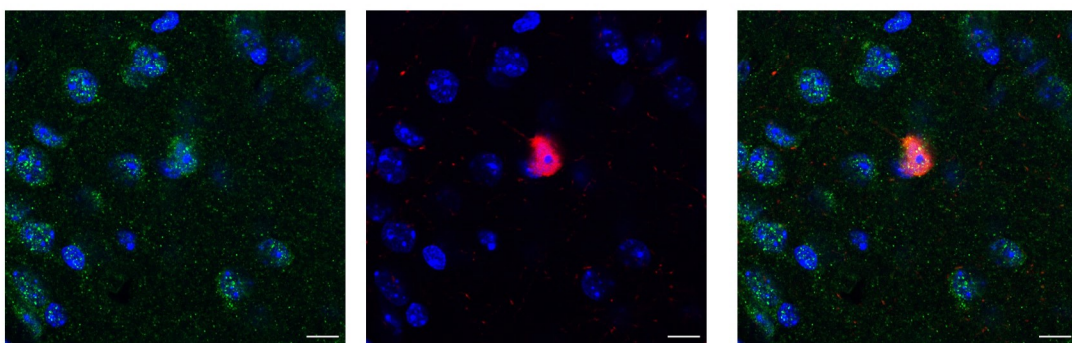
L3



L4



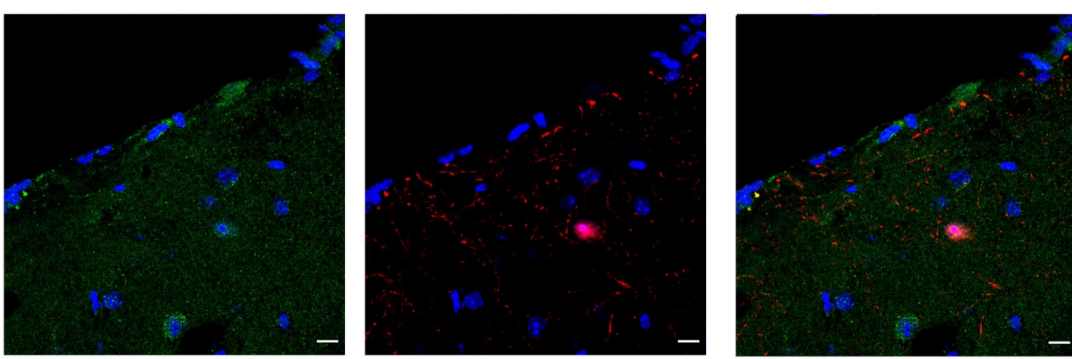
L5



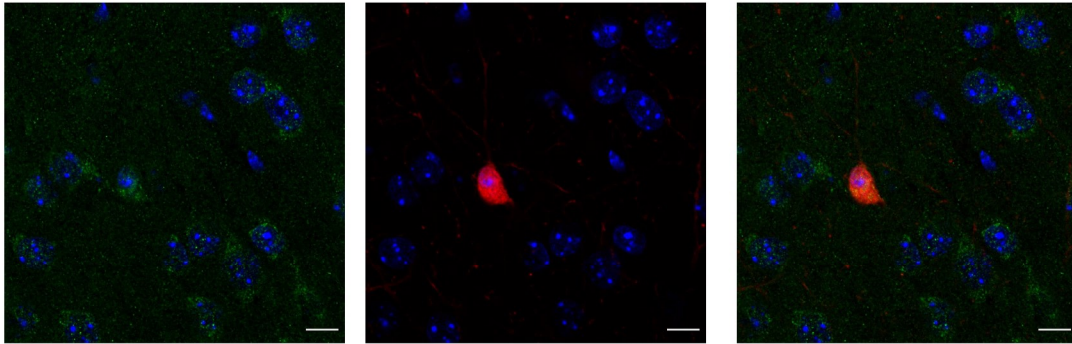
L6



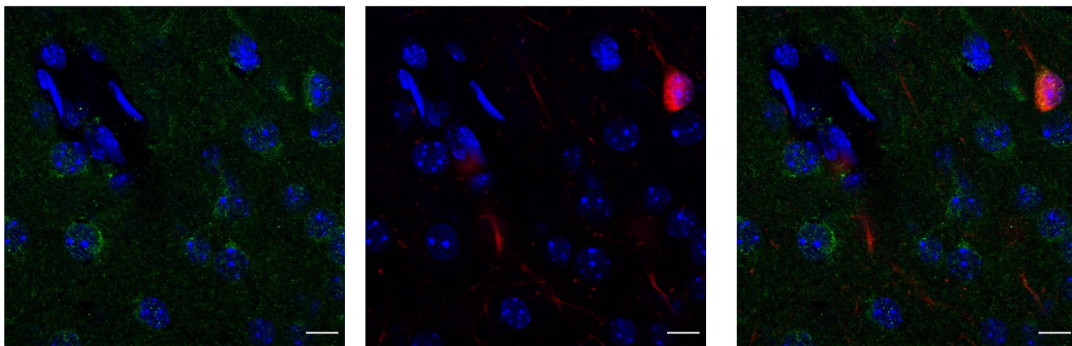
SSTR4/VIP/DAPI



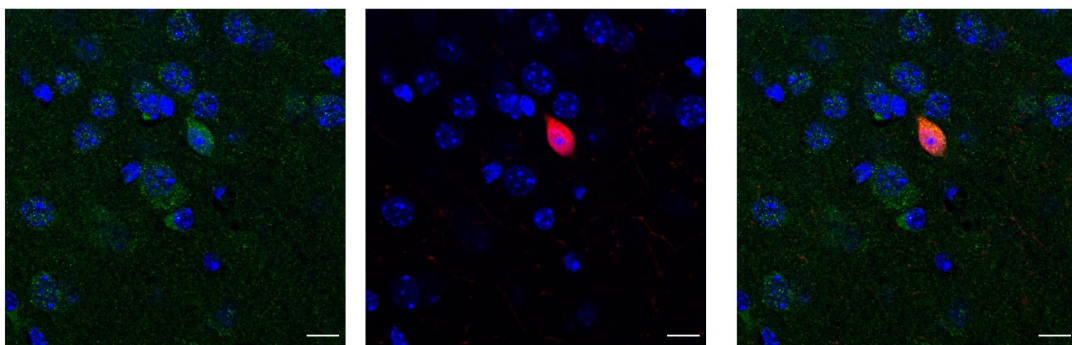
L1



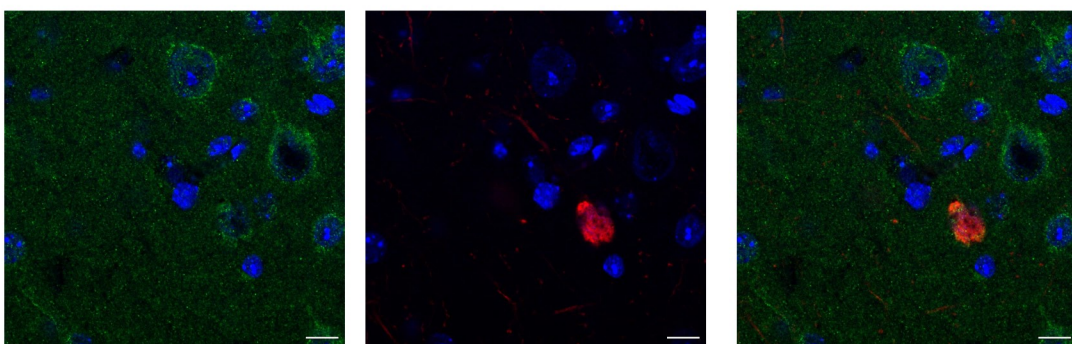
L2



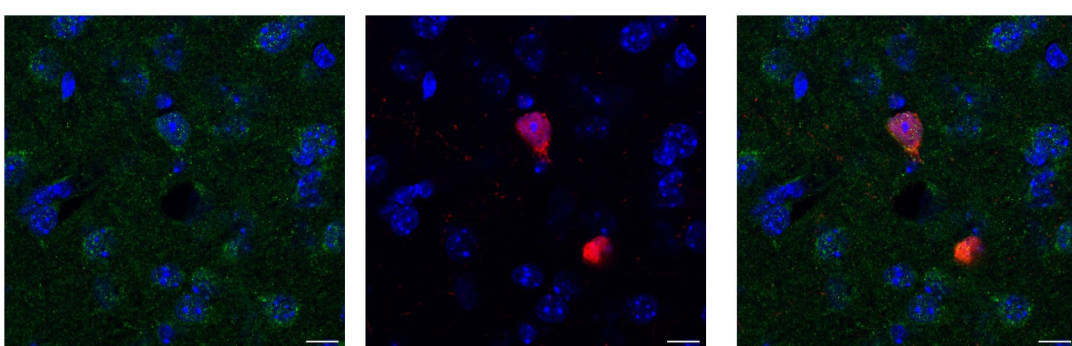
L3



L4



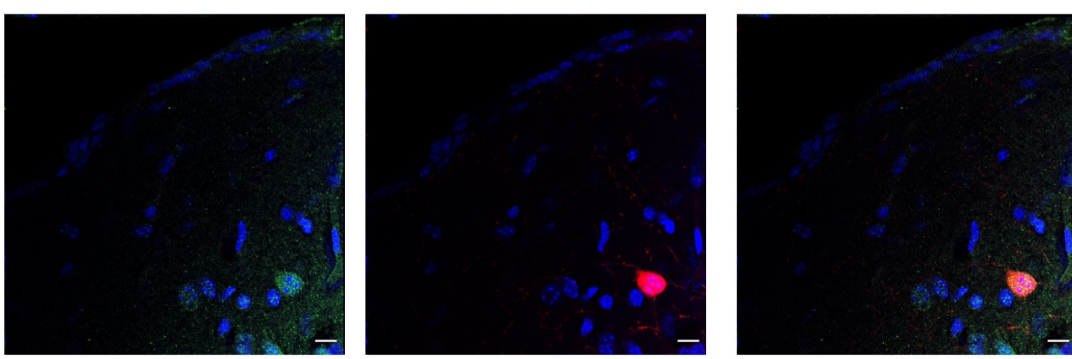
L5



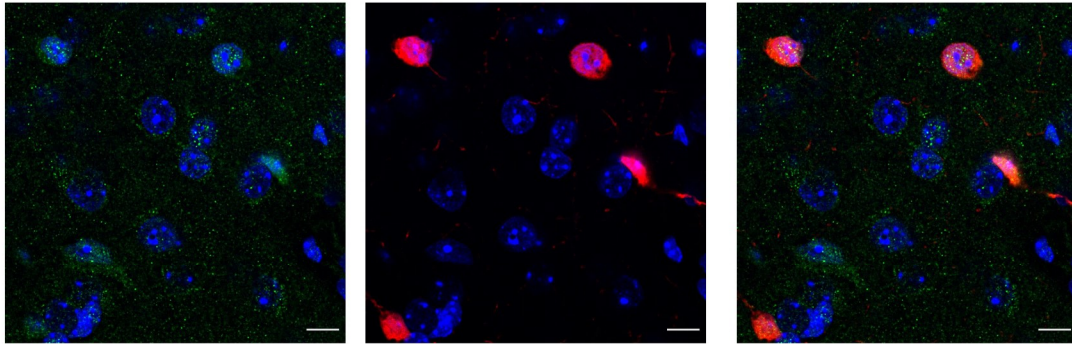
L6



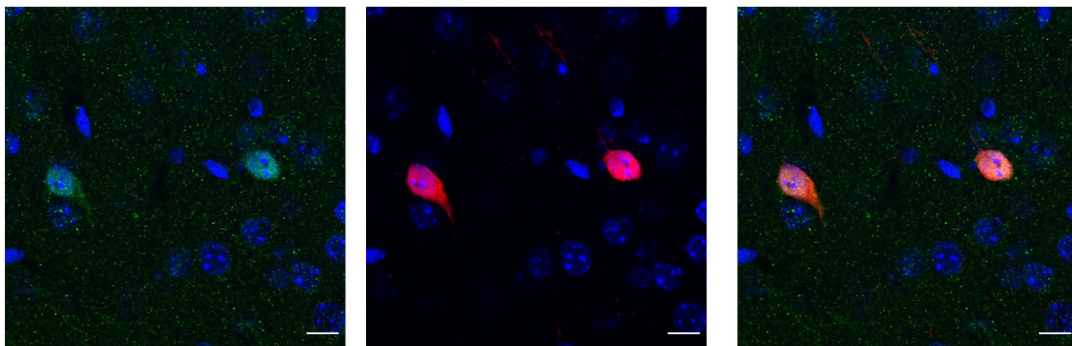
SSTR5/VIP/DAPI



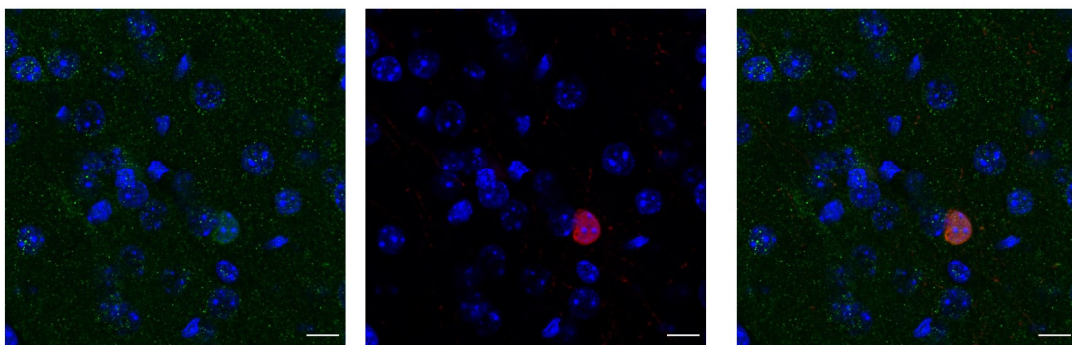
L1



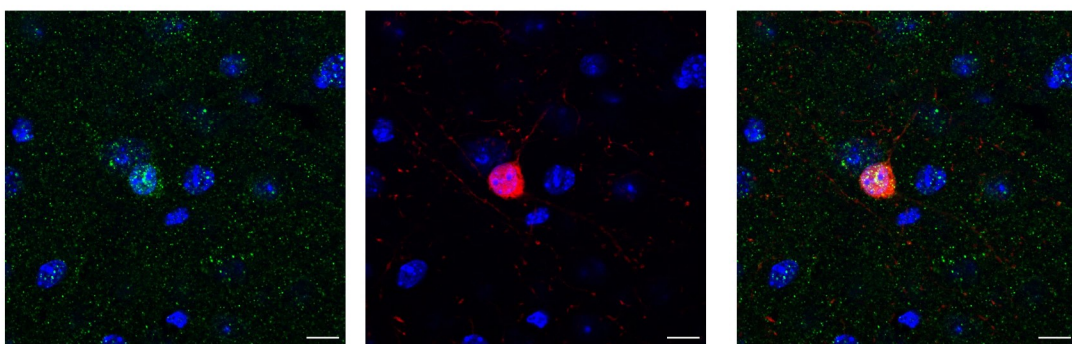
L2



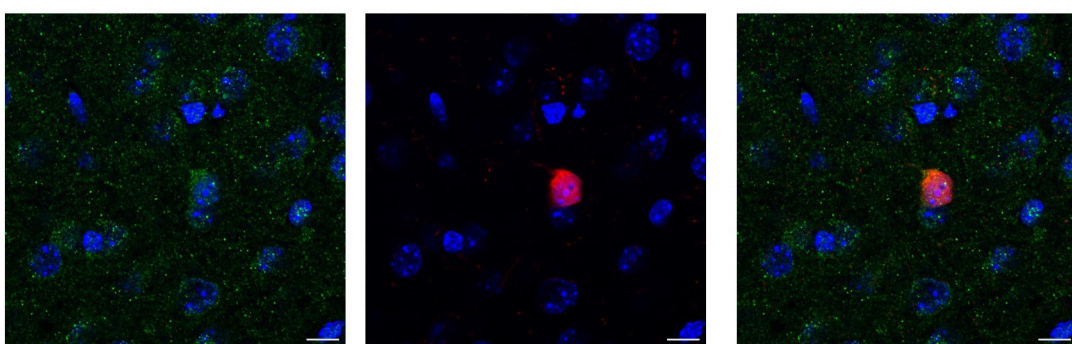
L3



L4



L5



L6



Table S1. Table presents results of quantitative analysis of the density of particular INs and percentage of SSTR immunopositive INs in different cortical layers of mouse somatosensory cortex. Mean  $\pm$  SD.

	PV INs/mm <sup>2</sup>	SSTR positive PV INs/mm <sup>2</sup>	Percentage of SSTR positive PV INs	SST INs/mm <sup>2</sup>	SSTR positive SST INs/mm <sup>2</sup>	Percentage of SSTR positive SST INs	VIP INs/mm <sup>2</sup>	SSTR positive VIP INs/mm <sup>2</sup>	Percentage of SSTR positive VIP INs
<b>L2/3</b>									
<b>SSTR1</b>	316.9 $\pm$ 24.4	243.9 $\pm$ 13.8	77.4 $\pm$ 8.7	80.9 $\pm$ 9.2	52.4 $\pm$ 6.2	65.9 $\pm$ 13.5	98.9 $\pm$ 31.8	28.4 $\pm$ 12.5	28.6 $\pm$ 7.3
<b>SSTR2</b>	-	-	-	76.0 $\pm$ 10.5	28.1 $\pm$ 10.1	36.4 $\pm$ 8.8	106.1 $\pm$ 31.3	62.9 $\pm$ 29.0	57.0 $\pm$ 10.3
<b>SSTR3</b>	209.1 $\pm$ 60.0	158.7 $\pm$ 63.2	74.3 $\pm$ 10.3	103.1 $\pm$ 21.6	85.0 $\pm$ 24.6	81.4 $\pm$ 7.0	125.0 $\pm$ 26.2	108.7 $\pm$ 23.5	87.0 $\pm$ 3.9
<b>SSTR4</b>	151.1 $\pm$ 55.7	64.3 $\pm$ 37.6	40.2 $\pm$ 11.8	85.3 $\pm$ 15.4	57.2 $\pm$ 16.8	66.1 $\pm$ 10.1	103.7 $\pm$ 27.9	57.9 $\pm$ 18.0	55.6 $\pm$ 5.1
<b>SSTR5</b>	146.6 $\pm$ 20.8	109.0 $\pm$ 19.8	74.1 $\pm$ 5.2	87.8 $\pm$ 20.6	78.8 $\pm$ 19.8	89.9 $\pm$ 7.8	113.2 $\pm$ 16.9	91.9 $\pm$ 21.2	80.5 $\pm$ 8.6
<b>L4</b>									
<b>SSTR1</b>	215.0 $\pm$ 31.0	165.6 $\pm$ 31.5	76.9 $\pm$ 7.2	124.4 $\pm$ 27.3	91.8 $\pm$ 19.8	74.3 $\pm$ 10.8	93.6 $\pm$ 47.5	44.7 $\pm$ 21.0	48.9 $\pm$ 6.8
<b>SSTR2</b>	-	-	-	156.4 $\pm$ 59.0	54.4 $\pm$ 22.9	35.2 $\pm$ 5.7	88.0 $\pm$ 14.9	37.9 $\pm$ 15.7	42.8 $\pm$ 15.0
<b>SSTR3</b>	290.6 $\pm$ 50.7	260.9 $\pm$ 45.1	89.9 $\pm$ 5.7	234.0 $\pm$ 29.3	212.5 $\pm$ 24.3	91.0 $\pm$ 5.2	77.3 $\pm$ 10.2	66.9 $\pm$ 14.3	85.8 $\pm$ 9.9
<b>SSTR4</b>	335.1 $\pm$ 23.9	205.8 $\pm$ 32.0	62.1 $\pm$ 13.7	181.4 $\pm$ 28.1	110.5 $\pm$ 22.4	60.9 $\pm$ 7.6	69.9 $\pm$ 9.9	40.8 $\pm$ 6.9	59.0 $\pm$ 11.2
<b>SSTR5</b>	312.8 $\pm$ 36.4	235.5 $\pm$ 31.5	75.3 $\pm$ 7.0	205.3 $\pm$ 71.3	168.0 $\pm$ 53.8	83.0 $\pm$ 5.1	63.1 $\pm$ 11.4	56.7 $\pm$ 9.4	90.5 $\pm$ 9.2
<b>L5/6</b>									
<b>SSTR1</b>	220.5 $\pm$ 40.5	189.8 $\pm$ 48.9	77.4 $\pm$ 8.7	250.1 $\pm$ 42.4	234.0 $\pm$ 42.8	93.4 $\pm$ 3.5	25.6 $\pm$ 10.4	13.8 $\pm$ 5.5	54.1 $\pm$ 3.8
<b>SSTR2</b>	-	-	-	215.3 $\pm$ 46.5	36.7 $\pm$ 19.1	16.8 $\pm$ 6.7	38.2 $\pm$ 9.9	18.4 $\pm$ 6.4	47.1 $\pm$ 6.1
<b>SSTR3</b>	214.2 $\pm$ 63.0	206.0 $\pm$ 61.4	96.2 $\pm$ 2.4	231.0 $\pm$ 14.0	224.6 $\pm$ 12.7	97.3 $\pm$ 1.9	34.3 $\pm$ 5.5	29.6 $\pm$ 5.8	85.9 $\pm$ 5.1
<b>SSTR4</b>	132.6 $\pm$ 30.2	48.8 $\pm$ 17.6	35.8 $\pm$ 6.6	171.9 $\pm$ 28.1	83.1 $\pm$ 22.5	48.9 $\pm$ 11.9	28.9 $\pm$ 11.0	9.0 $\pm$ 4.9	30.1 $\pm$ 7.8
<b>SSTR5</b>	175.5 $\pm$ 74.4	162.8 $\pm$ 65.0	93.0 $\pm$ 7.0	221.5 $\pm$ 32.9	201.7 $\pm$ 43.6	90.4 $\pm$ 7.6	28.1 $\pm$ 5.6	24.1 $\pm$ 6.3	85.4 $\pm$ 13.4