

Figure 6A

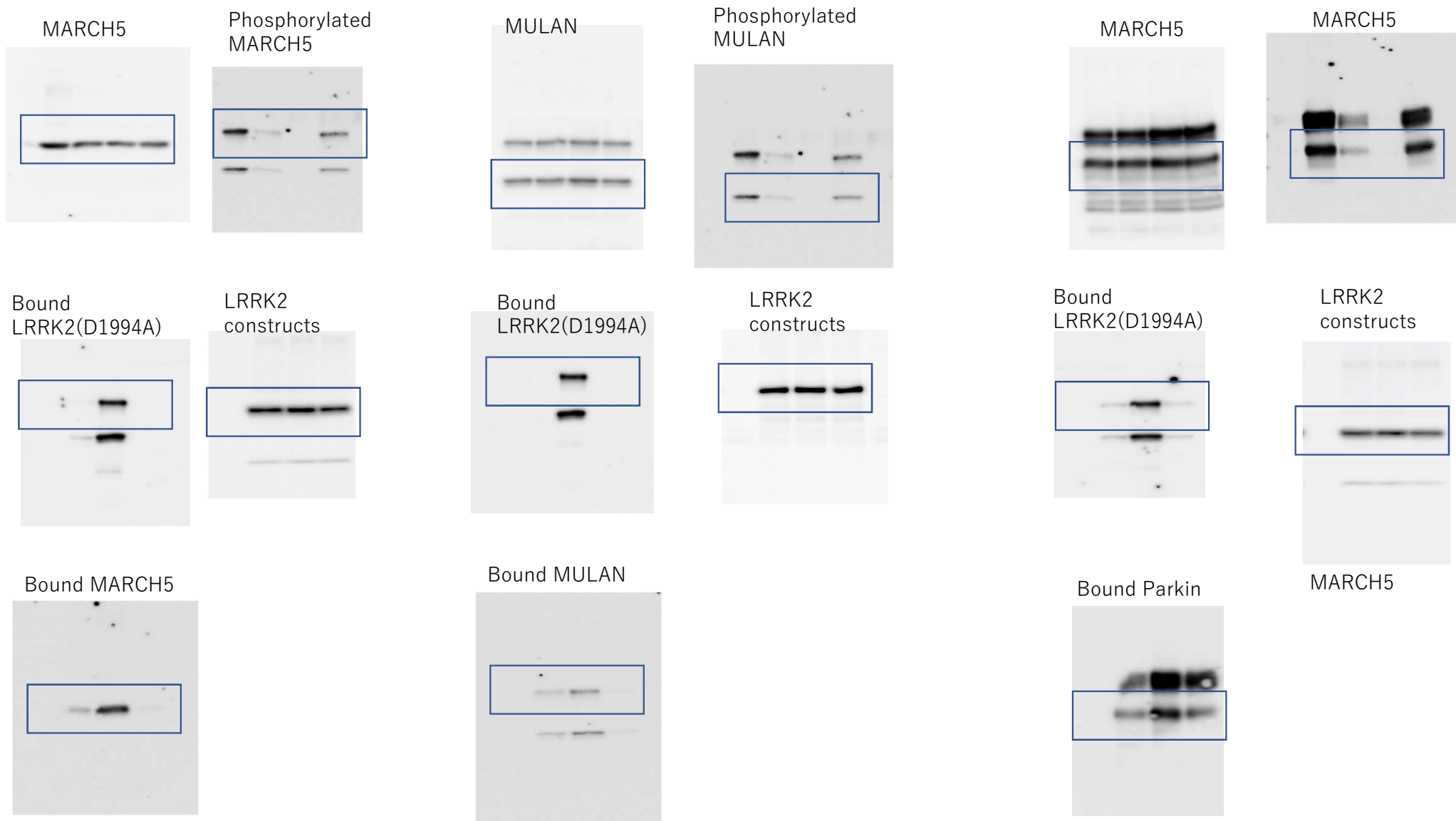


Figure 6B

LRRK2 constructs



Phosphorylated LRRK2((G2019S))



³²P-labeled LRRK2((G2019S))

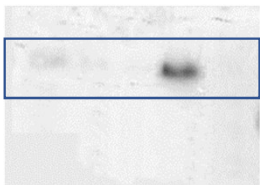
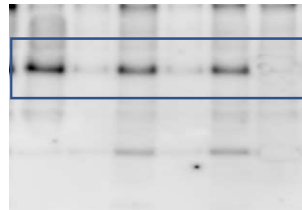


Figure 6C

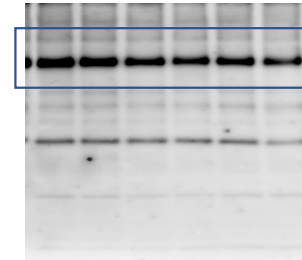
MARCH5 / MULAN / Parkin



Bound LRRK2(S1290A)



LRRK2 constructs

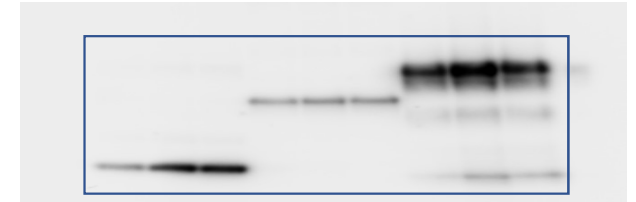


Bound MARCH5 / MULAN / Parkin

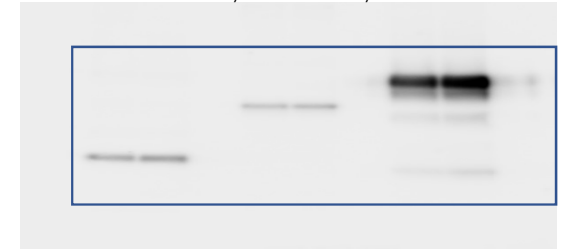


Figure 6D

MARCH5 / MULAN / Parkind2



Phosphorylated MARCH5 / MULAN / Parkind2



LRRK2 constructs

