

# **Role of innate lymphoid cells in chronic colitis during anti-IL-17A therapy**

**Chan Hyuk Park<sup>1</sup>, A-reum Lee<sup>2</sup>, Sang Bong Ahn<sup>3</sup>, Chang Soo Eun<sup>4</sup>, Dong Soo Han<sup>5</sup>**

<sup>1</sup>Department of Internal Medicine, Hanyang University Guri Hospital, Hanyang University College of Medicine, Guri, Korea

<sup>2</sup>Department of Internal Medicine, Hanyang University Guri Hospital, Hanyang University College of Medicine, Guri, Korea

<sup>3</sup>Department of Internal Medicine, Nowon Eulji Medical Center, Eulji University, Seoul, Korea

<sup>4</sup>Department of Internal Medicine, Hanyang University Guri Hospital, Hanyang University College of Medicine, Guri, Korea

<sup>5</sup>Department of Internal Medicine, Hanyang University Guri Hospital, Hanyang University College of Medicine, Guri, Korea

Corresponding author: Dong Soo Han

Department of Internal Medicine, Hanyang University Guri Hospital, Hanyang University College of Medicine

153 Gyeongchun-ro, Guri, Republic of Korea

Postal code: 11923

Phone: +82-31-560-2226

Fax: +82-31-553-7369

E-mail: [hands@hanyang.ac.kr](mailto:hands@hanyang.ac.kr)

## Supplementary information

**Figure S1. Expression of inflammatory cytokines including IL-12 (A), IFN- $\gamma$  (B), and IL-6 (C) in T cell transfer-induced colitis (*Rag2*<sup>-/-</sup> mice without T cell transfer: n=13; *Rag2*<sup>-/-</sup> mice with T cell transfer from wild-type mice: n=8; *Rag2*<sup>-/-</sup> mice with T cell transfer from *Il17a*<sup>-/-</sup> mice: n=8).**

\*  $P < 0.05$ .

NS, not significant.

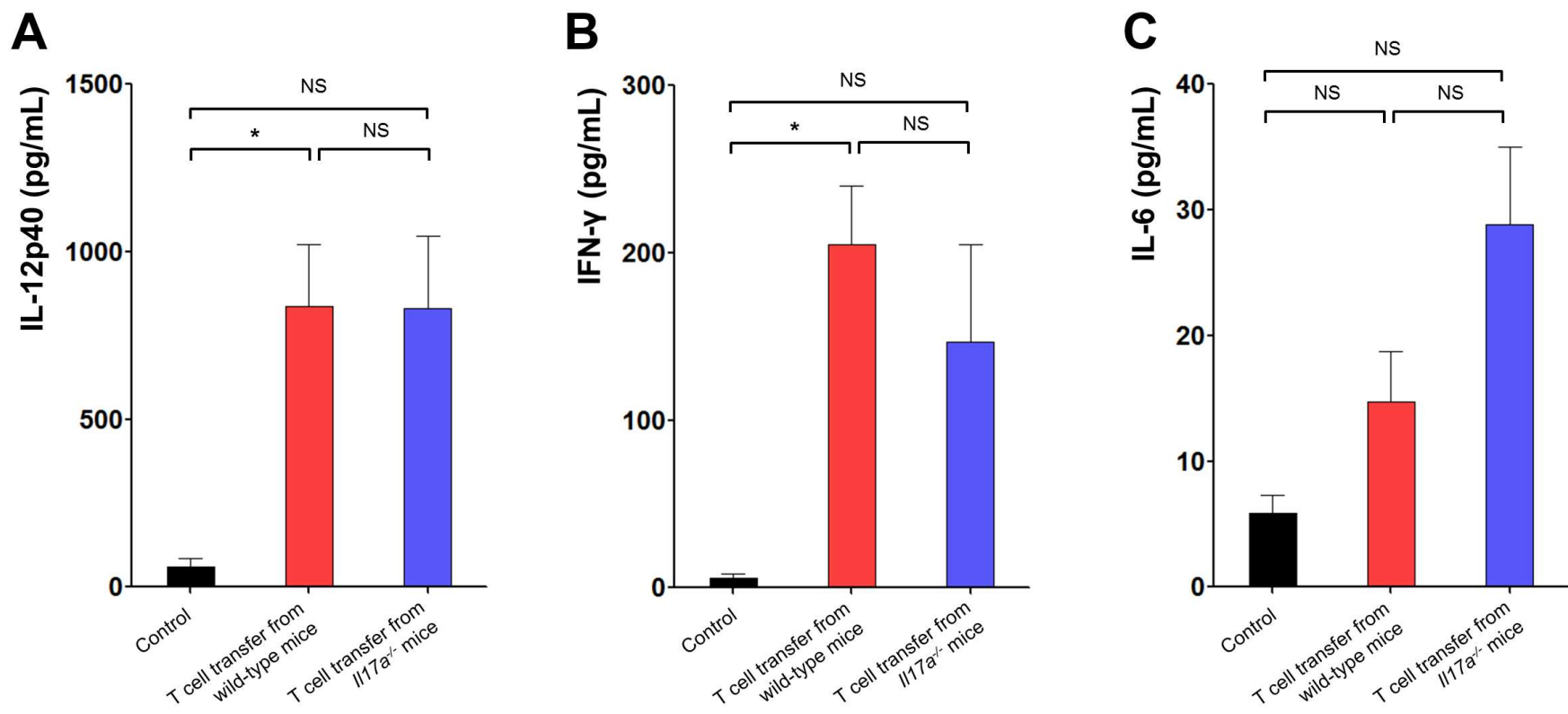
**Figure S2. Flow cytometry analysis of spleen cells in *Rag2*<sup>-/-</sup> mice (A), *Rag2*<sup>-/-</sup> mice that received T cells from wild-type mice (B), and *Rag2*<sup>-/-</sup> mice that received T cells from *Il17a*<sup>-/-</sup> mice (C).**

FSC, forward scatter; SSC, side scatter.

**Figure S3. Flow cytometry analysis of colonic lamina propria lymphocytes in the DSS-induced colitis models between wild-type mice and *Il17a*<sup>-/-</sup> mice. (A) No acute colitis in wild-type mice, (B) no acute colitis in *Il17a*<sup>-/-</sup> mice, (C) DSS-induced colitis in wild-type mice, and (D) DSS-induced colitis in *Il17a*<sup>-/-</sup> mice.**

Flow cytometry analysis was performed on the 8<sup>th</sup> day after the DSS treatment.

DSS, dextran sulfate sodium



**Figure S1. Expression of inflammatory cytokines including IL-12 (A), IFN- $\gamma$  (B), and IL-6 (C) in T cell transfer-induced colitis (*Rag2*<sup>-/-</sup> mice without T cell transfer: n=13; *Rag2*<sup>-/-</sup> mice with T cell transfer from wild-type mice: n=8; *Rag2*<sup>-/-</sup> mice with T cell transfer from *Il17a*<sup>-/-</sup> mice: n=8).**

\*  $P < 0.05$ .

NS, not significant.

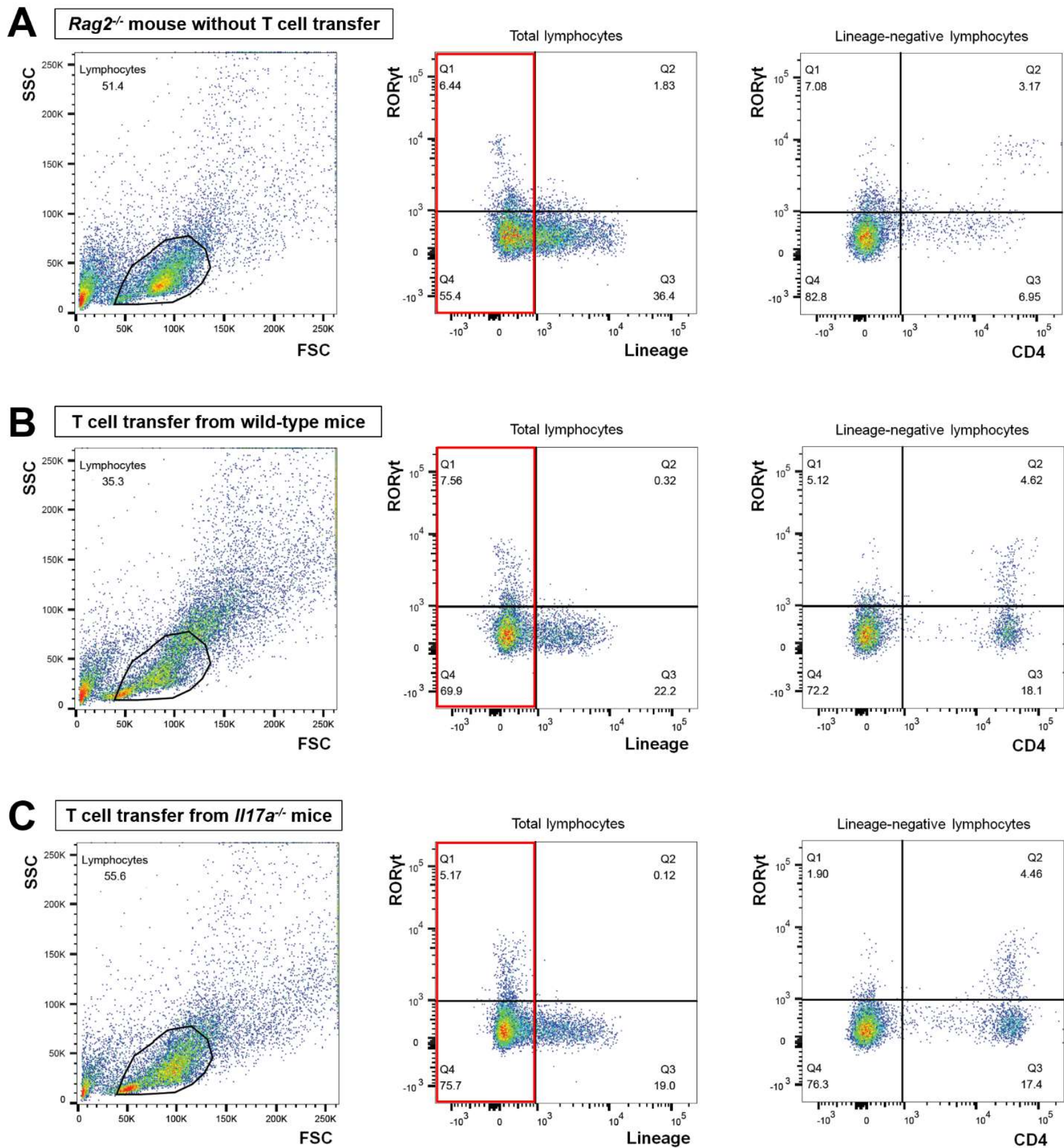
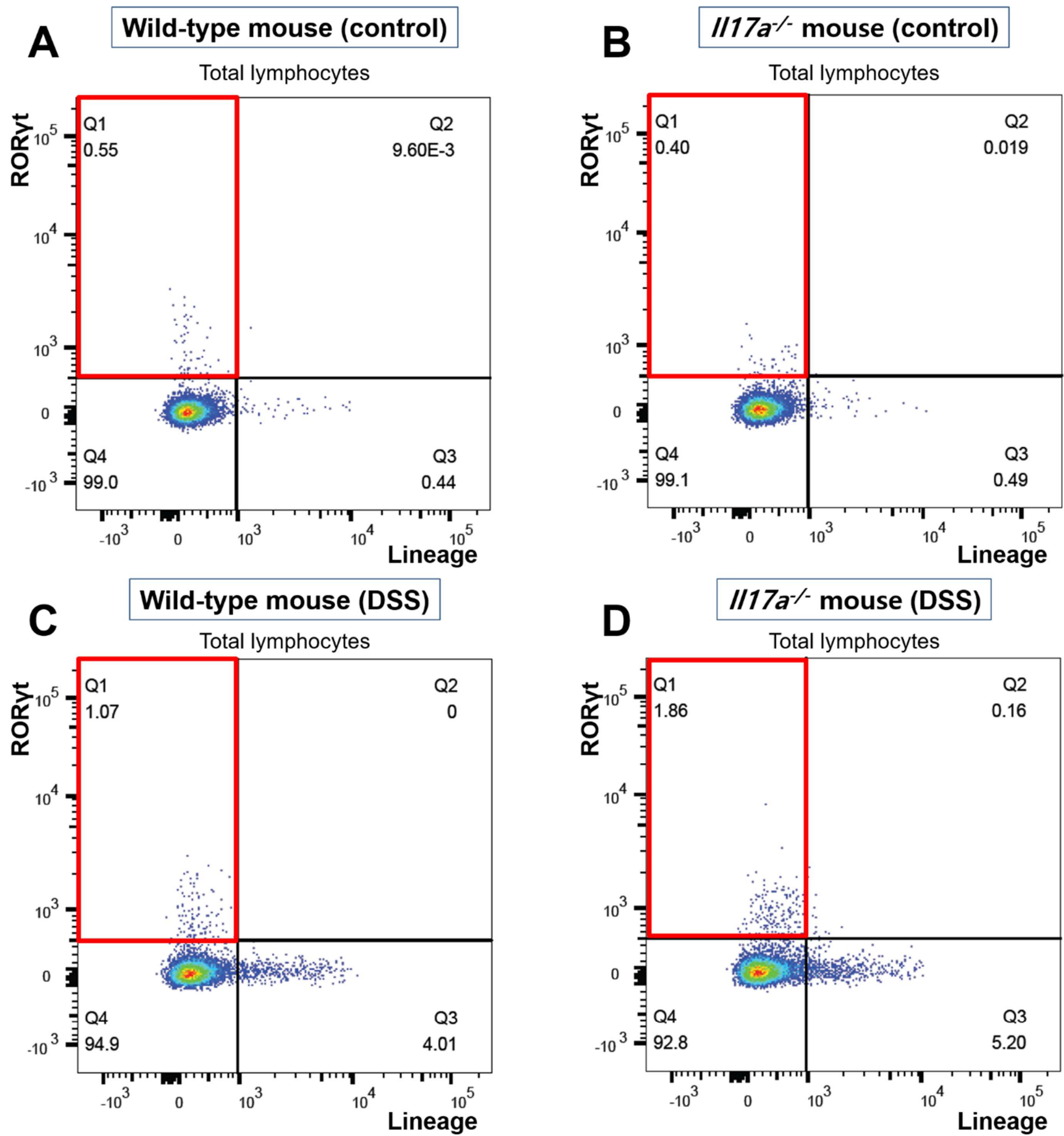


Figure S2. Flow cytometry analysis of spleen cells in *Rag2*<sup>-/-</sup> mice (A), *Rag2*<sup>-/-</sup> mice that received T cells from wild-type mice (B), and *Rag2*<sup>-/-</sup> mice that received T cells from *Il17a*<sup>-/-</sup> mice (C).

FSC, forward scatter; SSC, side scatter.



**Figure S3. Flow cytometry analysis of colonic lamina propria lymphocytes in the DSS-induced colitis models between wild-type mice and *Il17a*<sup>-/-</sup> mice.** (A) No acute colitis in wild-type mice, (B) no acute colitis in *Il17a*<sup>-/-</sup> mice, (C) DSS-induced colitis in wild-type mice, and (D) DSS-induced colitis in *Il17a*<sup>-/-</sup> mice.

Flow cytometry analysis was performed on the 8<sup>th</sup> day after the DSS treatment.

DSS, dextran sulfate sodium