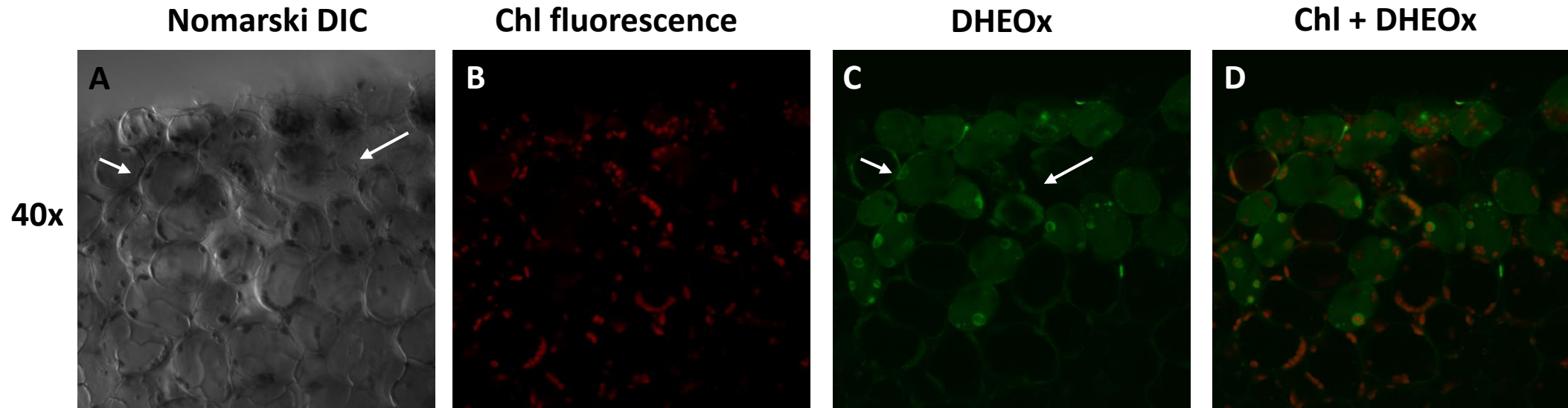


Supplementary data 1



Supplementary data 1: Superoxide anion radical imaging in cells of WT Arabidopsis leaves detected by confocal laser scanning microscope. The panels (from left to right) represents the Nomarski DIC; chl fluorescence; DHEox fluorescence and combined (chl fluo + DHEox) channel following 30 min of incubation in DHE [250 μ M] in the presence of 0.01% DMSO. The arrows indicate the sites of mechanical injury ~~measured at a magnification of 40x~~. More cell layers are can be seen to be impacted (marked by arrows) in comparison to Fig. 1II. The fluorescence signal was measured with an excitation (λ_{ex}) and emission (λ_{em}) wavelengths of 488 nm and 505-605nm respectively.