

Stem Cell Reports, Volume 14

Supplemental Information

**Conformal Coating of Stem Cell-Derived Islets for β Cell Replacement in
Type 1 Diabetes**

Aaron A. Stock, Vita Manzoli, Teresa De Toni, Maria M. Abreu, Yeh-Chuin Poh, Lillian Ye, Adam Roose, Felicia W. Pagliuca, Chris Thanos, Camillo Ricordi, and Alice A. Tomei

Supplemental Figure and legend

Figure S1:

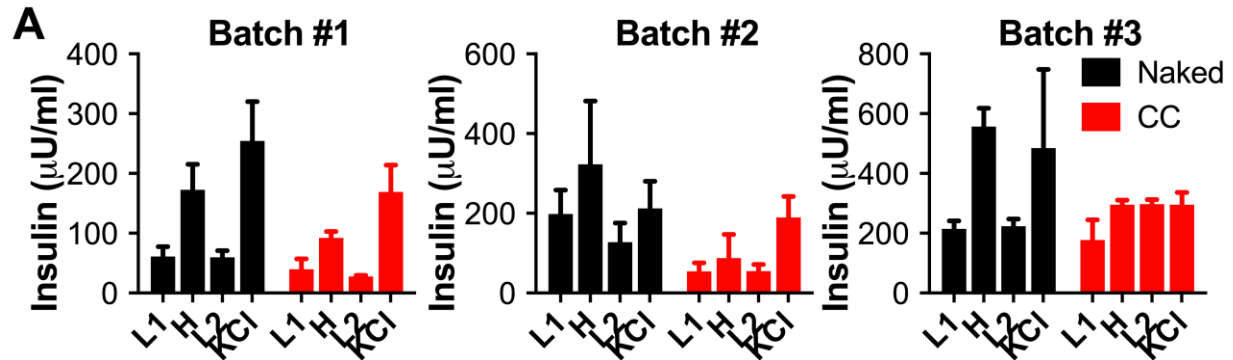


Figure S1: *In vitro* GSIS assessment of unencapsulated and CC SC-islets

(A) GSIS functionality of three independent batches of unencapsulated (black, naked) and conformal coated (red, CC) SC-islets 48 hours (S6d11) after encapsulation as absolute insulin secretion ($n=3$ wells assayed per condition) during sequential stimulation with 2.8mM glucose (L), 20mM glucose (H), 2.8mM glucose (L), and 30mM KCl.