

Supplementary Materials: Acute Kidney Injury in Pediatric Patients on Extracorporeal Membrane Oxygenation: A Systematic Review and Meta-analysis

Panupong Hansrivijit, Ploypin Lertjitbanjong, Charat Thongprayoon, Wisit Cheungpasitporn, Narothama Reddy Aeddula, Sohail Abdul Salim, Api Chewcharat, Kanramon Watthanasuntorn, Narat Srivali, Michael A. Mao, Patompong Ungprasert, Karn Wijarnpreecha, Wisit Kaewput and Tarun Bathini

Data S1: Search terms for systematic review.

Database: Ovid MEDLINE (783 articles)

1. exp acute kidney injury/
2. acute kidney injury\$.mp
3. exp acute renal failure/
4. acute renal failure\$.mp.
5. exp renal insufficiency/
6. renal insufficiency\$.mp.
7. exp dialysis/
8. dialysis\$.mp.
9. hemodialysis\$.mp.
10. renal replacement therapy\$.mp.
11. hemofiltration\$.mp.
12. hemodiafiltration\$.mp.
13. 1 or 2 or 3 or 4 or 5 or 6 or 7 or 8 or 9 or 10 or 11 or 12
14. Extracorporeal Membrane Oxygenation.mp
15. Exp Extracorporeal Membrane Oxygenation/
16. ECMO.mp
17. 14 or 15 or 16
18. 13 and 17

Database: EMBASE (952 articles)

('extracorporeal oxygenation' OR 'extracorporeal membrane oxygenation device' OR 'extracorporeal membrane oxygenation cannula') AND 'acute kidney failure'

Cochrane Database (6 articles)

"extracorporeal membrane oxygenation" AND "acute kidney injury"

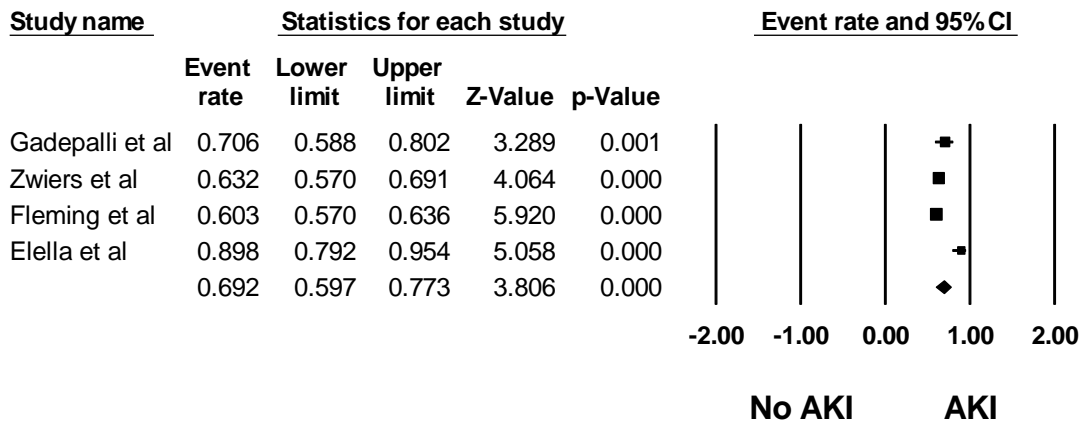


Figure S1. Forest plots of the included studies assessing incidence of AKI limited to studies with standard AKI definitions was performed and demonstrated the pooled estimated incidence of AKI.

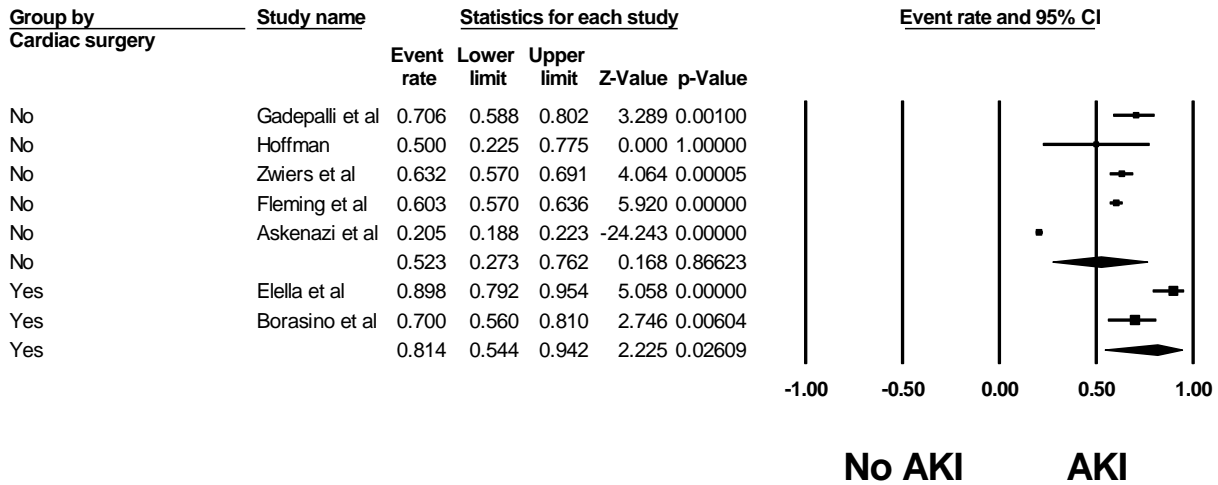


Figure S2. Forest plots of the included studies assessing incidence of AKI based on cardiac surgery status.

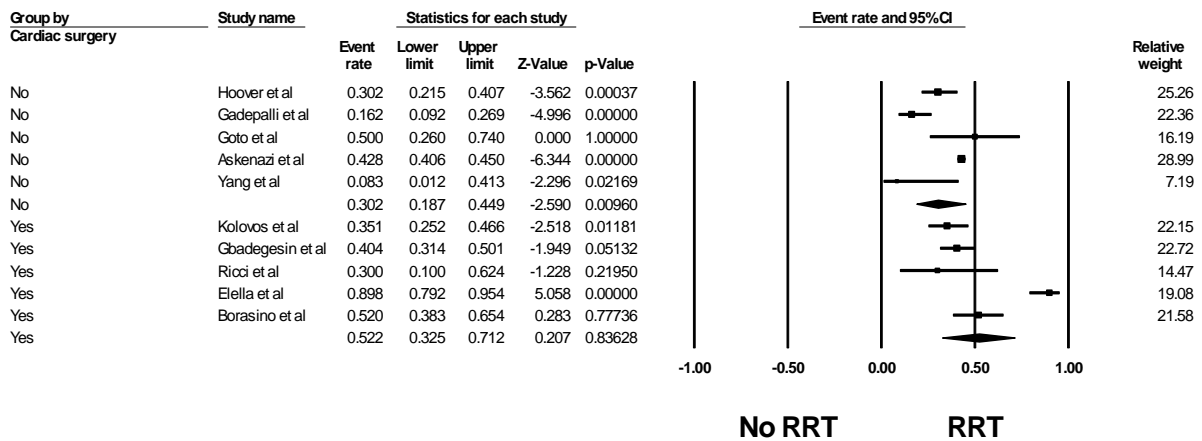


Figure S3. Forest plots of the included studies assessing incidence of severe AKI requiring RRT based on cardiac surgery status.

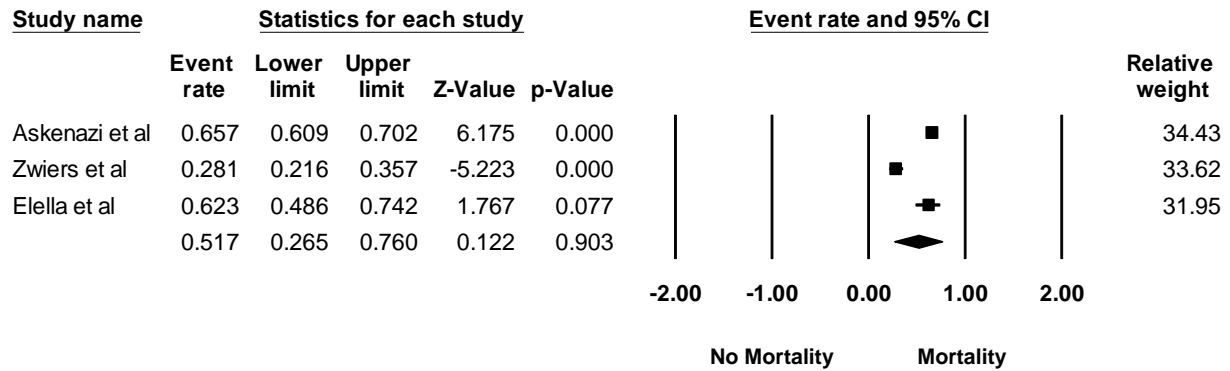


Figure S4. Forest plots of the included studies assessing hospital and/or 90-day mortality rates of pediatric patients on ECMO with AKI.

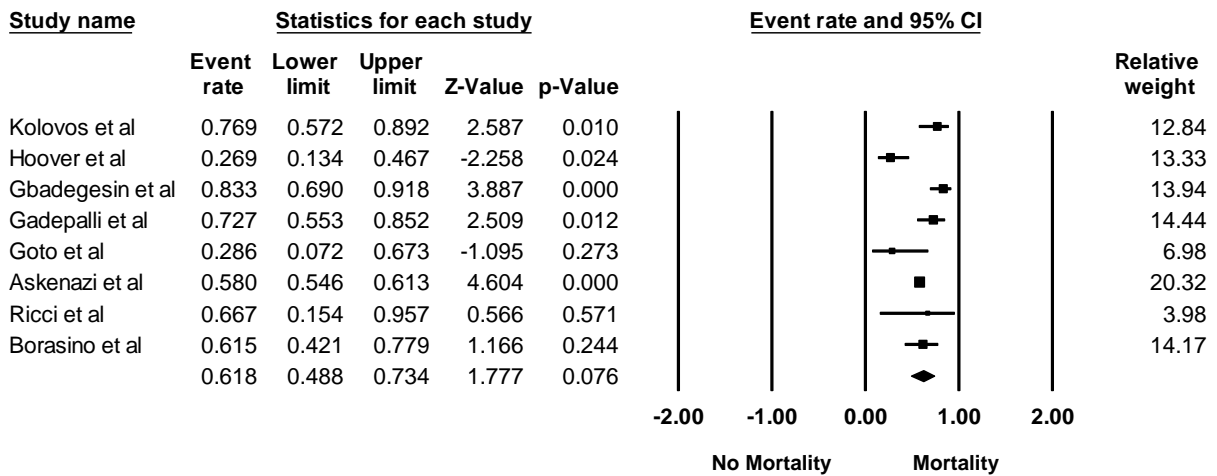


Figure S5. Forest plots of the included studies assessing hospital and/or 90-day mortality rates of pediatric patients on ECMO with severe AKI requiring RRT .

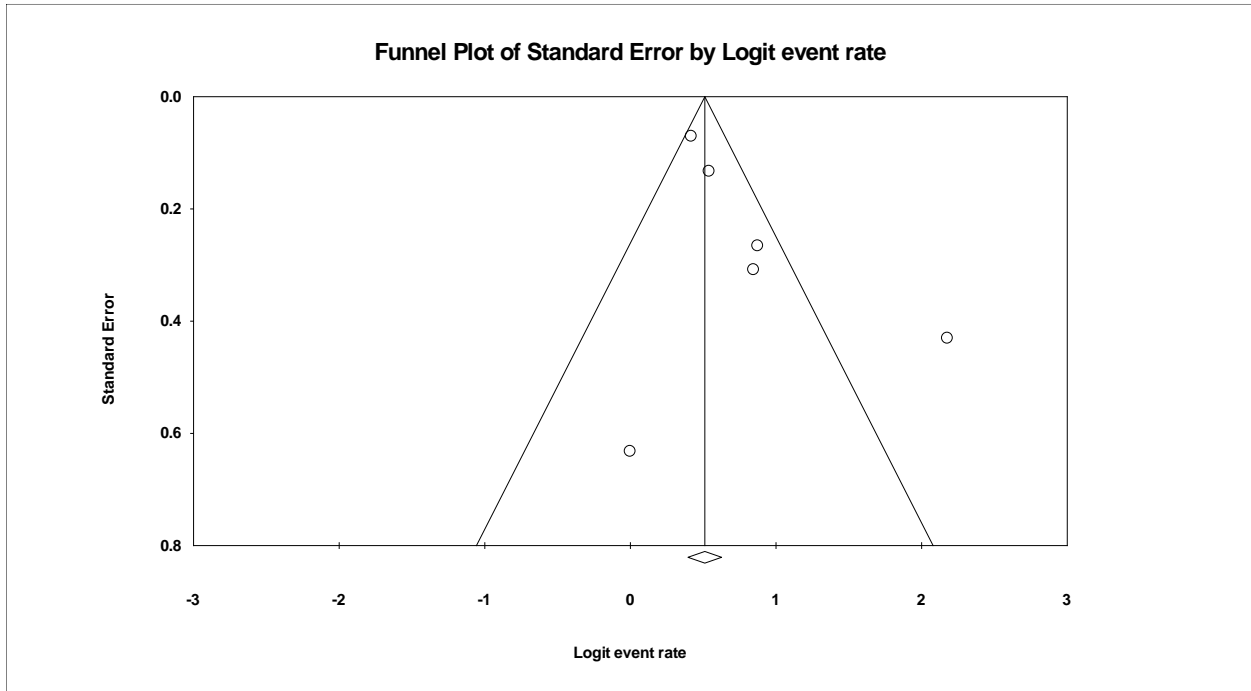


Figure S6. Funnel plot evaluating for publication bias evaluating incidence of AKI while on ECMO.

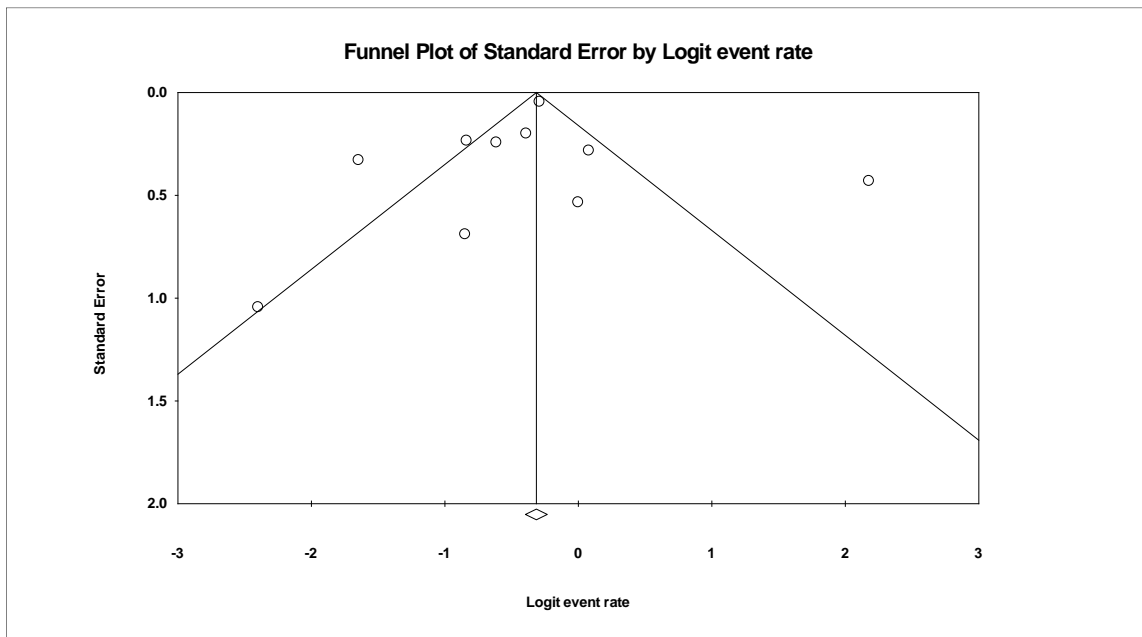


Figure S7: Funnel plot evaluating for publication bias evaluating incidence of severe AKI requiring RRT while on ECMO.