

Supplementary Materials:

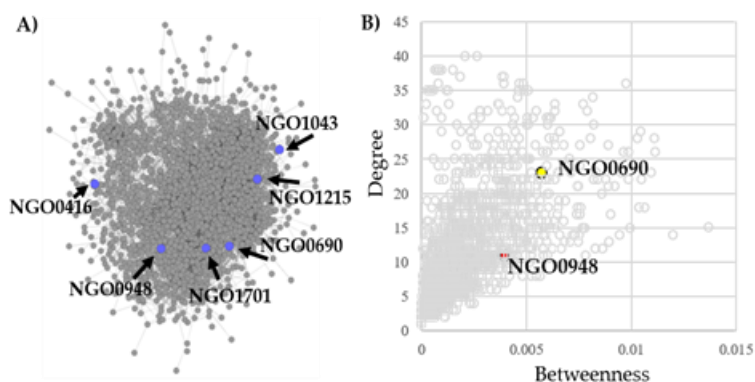


Figure S1. Network analysis. (A) The six candidates positioned within the gonococcal gene expression network. (B) Centrality of the candidates within the gonococcal gene network measured in degree (y-axis) and betweenness (x-axis) values. NGO0690 (yellow dot) has both high degree and betweenness and NGO0948 (red dot) has high degree. The other four candidates have average values (not shown).

Table S1. Candidates alleles analysis in *N. lactamica* (288 strains in PubMLST).

Gene	Total Alleles	¹ Frequency		² Distribution (% of 288 strains)	<i>p</i> -Dist.
		Allele	# of Strains		
<i>ngo0416</i> (NEIS0782)	-	-	288	0	0.006
<i>ngo0690</i> (NEIS1164)	13	3 8	229 23	79.5 7.9	0.01
<i>ngo0948</i> (NEIS0906)	17	3 70	225 21	78.1 7.2	0.005
<i>ngo1043</i> (NEIS2446)	8	28 17	242 21	84 7.3	0.01
<i>ngo1215</i> (NEIS1474)	10	34 7	241 23	74.3 7.9	0.012
<i>ngo1701</i> (NEIS2720)	10	20 24	225 23	78.1 7.9	0.005

¹ Most frequent alleles in the highest number of strains. ² Percent of strains expressing the high frequency alleles¹ within the total number of isolates. Data collected from PubMLST [61].

