

Rap2A and HCC

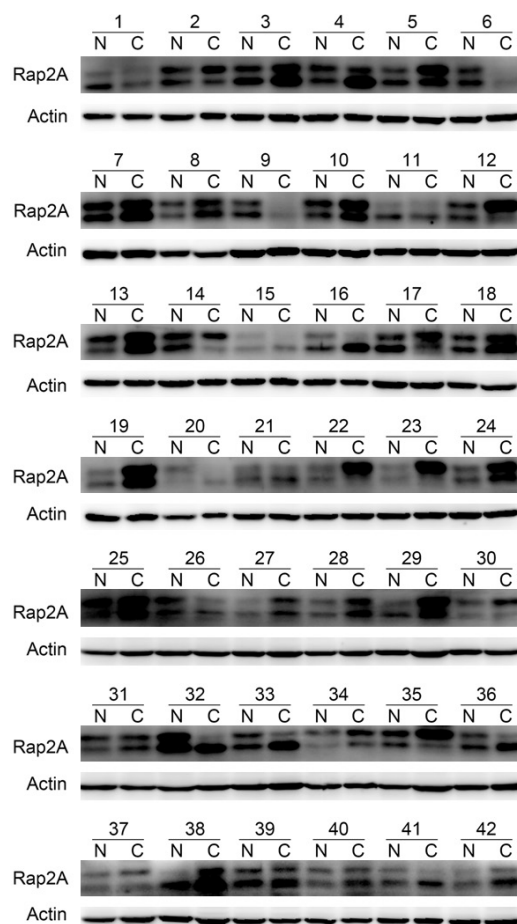


Figure S1. Expression of Rap2A protein in 42 paired HCC.

Rap2A and HCC

Table S1. Western blot band grayscale from 42 paired HCC tissues and adjacent normal liver tissues

Case	Actin normal	Rap2A normal	(Rap2A/ β -Actin) normal	Actin cancer	Rap2A cancer	(Rap2A/ β -Actin) cancer
1	176.129	50.346	0.285847305	166.08	22.969	0.138300819
2	160.06	74.038	0.462564038	169.373	62.017	0.366156353
3	233.5	72.94	0.312376874	224.29	100.749	0.44919078
4	174.927	65.59	0.37495641	168.201	83.11	0.494111212
5	168.365	58.962	0.350203427	160.431	77.011	0.480025681
6	151.668	63.57	0.419139172	162.941	28.179	0.172939898
7	228.984	107.184	0.468085106	230.811	129.902	0.562806799
8	165.654	71.462	0.431393145	169.964	111.539	0.656250735
9	195.969	96.13	0.490536769	189.245	27.531	0.145478084
10	166.366	84.115	0.505602106	167.35	137.282	0.820328653
11	152.464	51.444	0.337417358	168	45.518	0.270940476
12	163.544	66.024	0.403707871	149.079	91.389	0.613023967
13	144.006	96.278	0.668569365	143.502	139.928	0.975094424
14	169.941	96.451	0.567555799	149.014	66.24	0.444521991
15	171.603	27.349	0.159373671	170.189	22.932	0.134744314
16	164.61	61.072	0.371010267	150.079	84.994	0.5663284
17	172.811	118.549	0.686003784	167.027	103.687	0.620779874
18	168.7	89.676	0.531570836	150.52	125.89	0.83636726
19	172.212	49.705	0.288626809	181.313	102.664	0.566225257
20	132.769	27.403	0.206396071	151.829	22.86	0.150564121
21	172.267	50.04	0.290479314	160.613	39.132	0.243641548
22	154.639	37.873	0.244912344	158.797	99.938	0.629344383
23	134.078	31.16	0.232402035	160.134	116.873	0.729845005
24	167.186	56.042	0.335207493	122.989	111.493	0.906528226
25	151.357	53.727	0.354968716	147.385	63.111	0.428205041
26	167.668	44.954	0.268113176	163.086	34.274	0.210159057
27	161.942	33.385	0.206154055	173.489	54.628	0.314878753
28	154.571	36.835	0.238304727	163.83	87.261	0.532631386
29	157.208	56.819	0.361425627	160.937	84.994	0.528119699
30	143.239	25.364	0.177074679	144.528	61.665	0.426664729
31	163.446	68.204	0.417287667	143.94	75.691	0.525851049
32	149.077	109.007	0.731212729	158.484	66.397	0.418950809
33	152.608	59.872	0.392325435	154.264	94.177	0.610492403
34	143.648	35.216	0.245154823	146.095	72.359	0.495287313
35	210.827	92.133	0.437007594	218.636	120.39	0.550641248
36	167.242	82.32	0.492220854	155.044	71.327	0.460043601
37	142.913	54.286	0.379853477	139.856	49.642	0.354950807
38	235.988	102.268	0.433361018	225.639	128.713	0.570437735
39	135.392	96.416	0.712124793	132.788	85.736	0.645660752
40	133.929	49.813	0.371935876	127.883	66.638	0.52108568
41	135.897	46.924	0.345290919	148.715	72.291	0.486104293
42	149.668	55.483	0.370707165	151.463	87.964	0.580762298