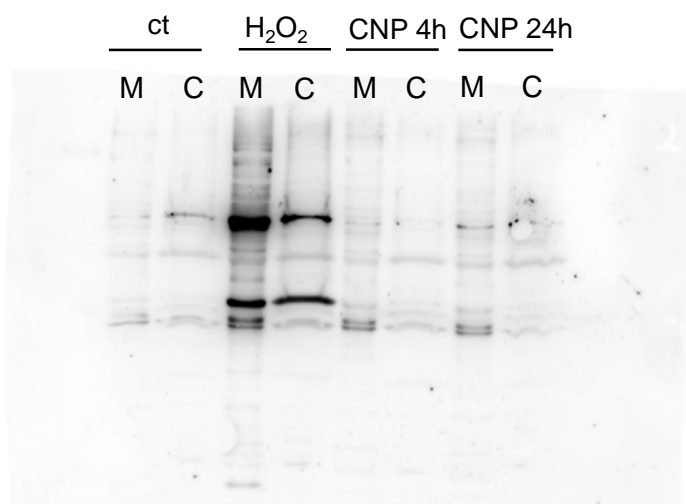
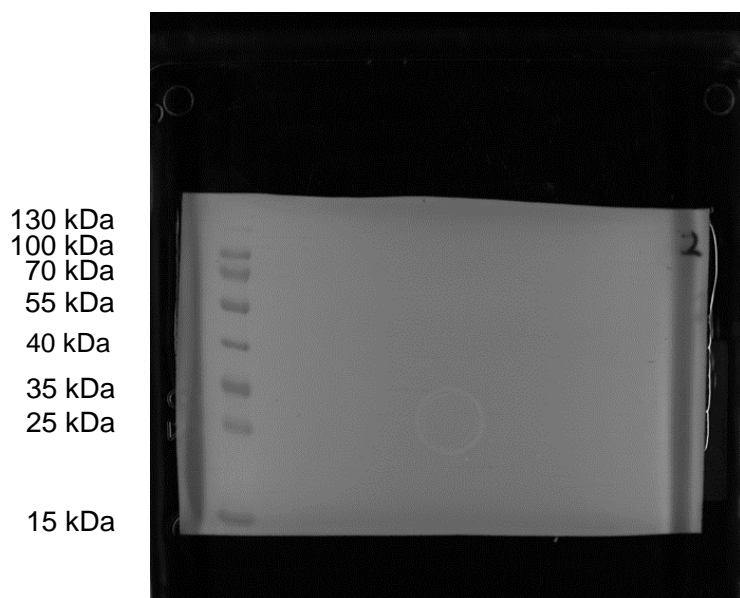


The following images correspond to Fig3C of the manuscript



sulfenic acids



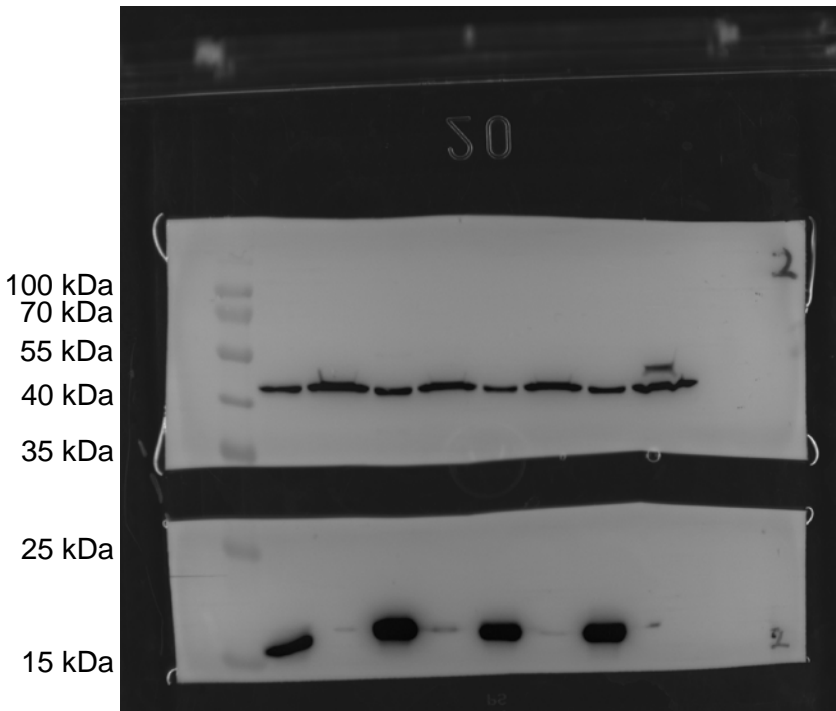
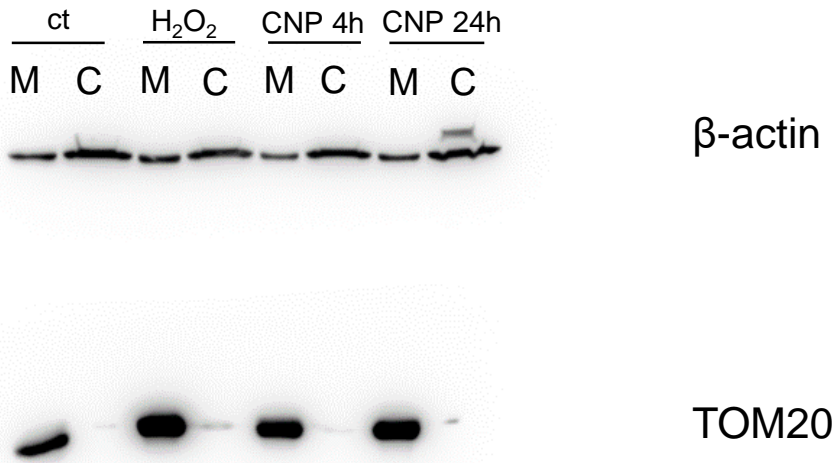
Upper panel:

A375 cells were separated into cytosolic (C) and mitochondrial (M) fraction after mock-treatment, incubation with H₂O₂ or incubation with CNP. Western Blot analysis was performed using an α -haptan antibody raised against the oxidation product of sulfenic acid and dimedone. The antigen-antibody complexes were visualized by an enhanced chemiluminescence system with the Fusion FX (Vilber Lourmat, Eberhardzell, Germany).

The image was taken at 8-14-18; exposure time was 3min 42sec.

Lower panel:

Corresponding PVDF membrane with markerMarker: PageRuler™Prestained Protein Ladder 10 to 180 kDa, Thermo Scientific



Upper panel:

A375 cells were separated into cytosolic (C) and mitochondrial (M) fraction after mock-treatment, incubation with H₂O₂ or incubation with CNP. Western Blot analysis was performed using anti-beta-actin and anti TOM-20 antibodies. Antigen-antibody complexes were visualized by an enhanced chemiluminescence system with the Fusion FX (Vilber Lourmat, Eberhardzell, Germany). The image was taken at 8-14-18, exposure time was 1min 72sec.

Lower panel:

Corresponding PVDF membranes with marker, merged with Western Blot

Marker: PageRuler™ Prestained Protein Ladder 10 to 180 kDa, Thermo Scientific

