

Supporting Information

Triple cell lineage tracing by a dual reporter on a single allele

Kuo Liu, Muxue Tang, Hengwei Jin, Qiaozhen Liu, Lingjuan He, Huan Zhu, Xiuxiu Liu, Ximeng Han, Yan Li, Libo Zhang, Juan Tang, Wenjuan Pu, Zan Lv, Haixiao Wang, Hongbin Ji, Bin Zhou*

Table S1. The insulator sequence.

The insulator sequence
gccccatcctcactgactccgtcctggagtggatgagagataatggccttacgtgtgccagggagggtcgggctggatttagcaagatttaccttc tccaaagagcgggtgctgcagtggcacagctgccacggaggtgggggggtcacctgcctggaggtgatgaagaactgtggggatgtggcactg agggacatggccagtgggcacgggtgggtgggtgggtggtcttggggatcttgaggggctttccagccttcatgattgacgattgtatgaacatc tacatggcaattctcagctgcctgtcccagtcctactgaccagctgtatctctccaggcaagcttccacccttctgcttgcacccagacacatca aacatgcaggctcagacacaggaccagcagtgtctgtggccttttggctcctctccatgctgggttfaactgctctttgccttctatcctatcttta tccttaaggtgttctgaacgctgtgactggagagtgtcccagagccctcaacacctgcatgtcccagctccatgctgtcctgcacttctatccccc gatctgcctctccgtagcactgaattggcaaacatgtgtcaccagaccaacaatgtcacagcaaacctcccctttagaggacaaggggaatg gctttacactgagacaggggaggttgggtggatagaggagcagttttccccagagggtgtgacgcactgaacaggttggccaaggaggct gtggatgccccatccctgcaggcattcaagccaggctggatgtgctctgggcagcctgggctgctggtgatgacctgcacatagcagggggt tgatctggatgagcactgtgctccttgaaccaggccgttctatgattctgtcattctaatctcttccagcctaaagcttttccccgatccccc gggtgtcagcagctcaagagcagcgagaagcgttcagaggaaagcagatccctgccaccttcccgtgcccgggctgtcccgcacgctgccg gctcggggatgcggggggagcggaccggagcggagccccggcgggctcgtgctgctgcccctagcgggggaggacgtaattacatcct gggggcttgggggggggctgtccc

Figure legend

Figure S1. No cross talk between Cre-loxP and Dre-rox recombination. (A) Immunostaining for ZsGreen, tdTomato and TNNI3 on E16.5 *Tnni3-Dre;R26-TLR* heat section shows TNNI3⁺ cardiomyocytes are ZsGreen⁺ (arrowheads). No tdTomato⁺ cells detected. (B) Immunostaining for ZsGreen, tdTomato and PECAM on E16.5 *Tie2-Cre;R26-TLR* heat section shows PECAM⁺ endothelial cells are tdTomato⁺ (arrowheads). No ZsGreen⁺ cells detected. LV, left ventricle; RV, right ventricle; VS, ventricular septum. Yellow bars, 1mm; white bars, 100 μ m. Each image is representative of five individual samples.

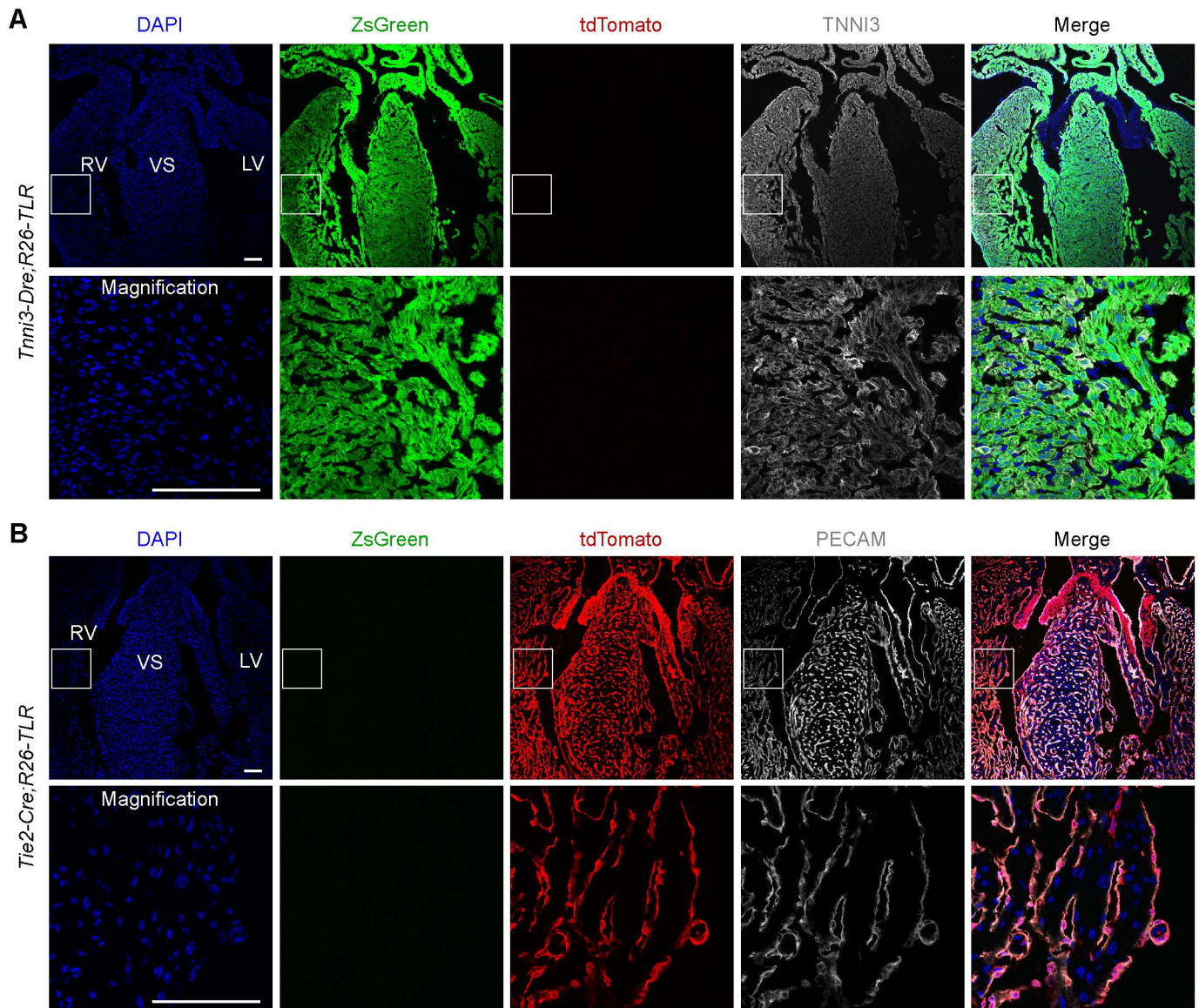


Figure S1. No cross talk between Cre-loxP and Dre-rox recombination. (A) Immunostaining for ZsGreen, tdTomato and TNNI3 on E16.5 *Tnni3-Dre;R26-TLR* heat section shows TNNI3⁺ cardiomyocytes are ZsGreen⁺ (arrowheads). No tdTomato⁺ cells detected. (B) Immunostaining for ZsGreen, tdTomato and PECAM on E16.5 *Tie2-Cre;R26-TLR* heat section shows PECAM⁺ endothelial cells are tdTomato⁺ (arrowheads). No ZsGreen⁺ cells detected. LV, left ventricle; RV, right ventricle; VS, ventricular septum. White bars, 100 μ m. Each image is representative of five individual samples.