

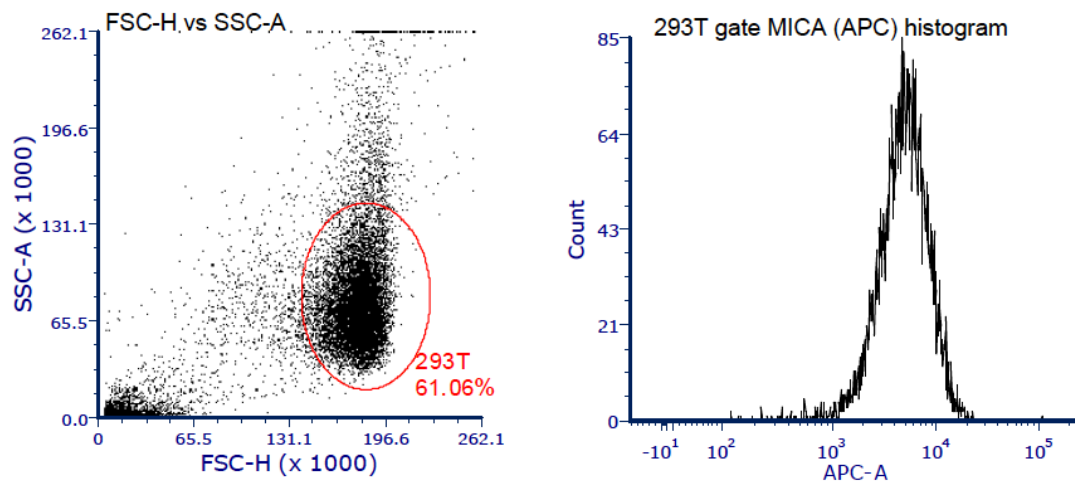
# European Journal of Immunology

Supporting Information  
for

**DOI 10.1002/eji.201847948**

Michael T. McCarthy, Da Lin, Tomoyoshi Soga, Julie Adam  
and Christopher A. O'Callaghan

**Inosine pranobex enhances human NK cell cytotoxicity by inducing metabolic  
activation and NKG2D ligand expression**



**Figure S1** Gating strategy.

(A) An FSC-H vs SSC-A plot was created, and a gate to include the central 293T cell population was drawn. (B) A frequency distribution histogram was drawn using the 293T cell gate. The mean fluorescence intensity of the relevant marker was calculated from this frequency distribution.