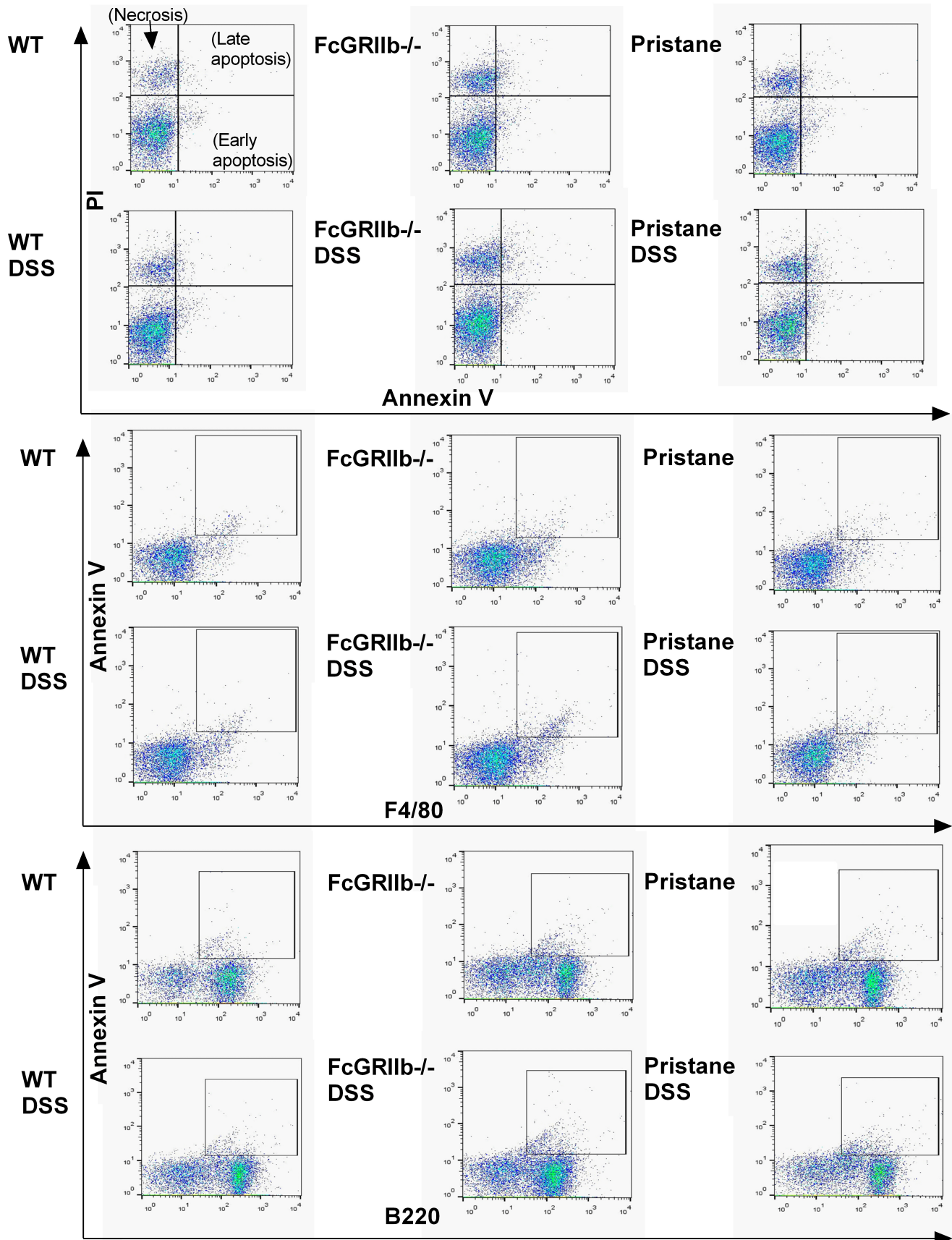


Leaky-gut enhanced lupus progression in the FcγRIIb deficient and pristane-induced mouse models of lupus

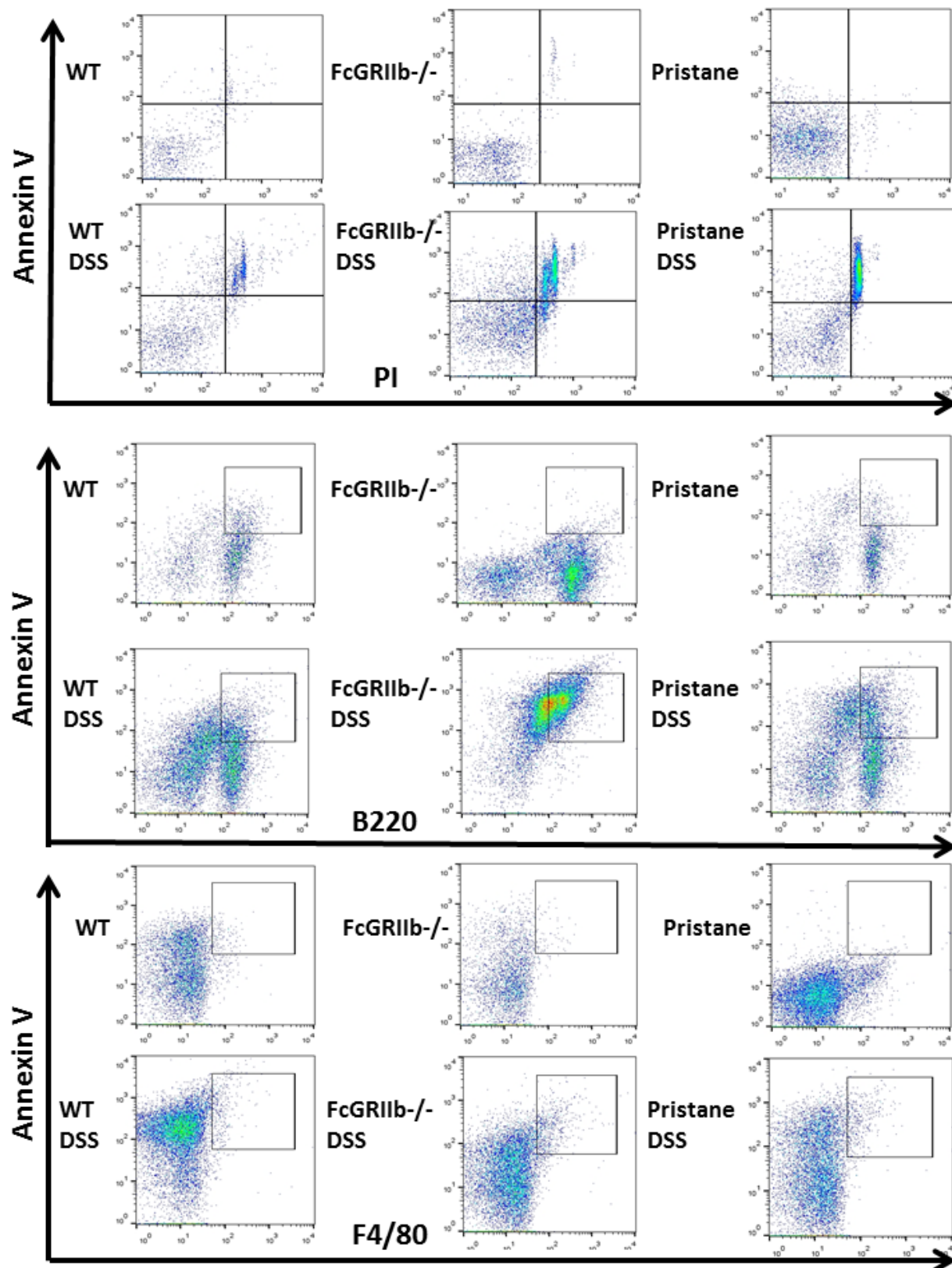
Arthid Thim-uam, Saowapha Surawut, Jiraphorn Issara-Amphorn, Thiranut Jaronwitschawan, Pratsanee Hiengrach, Piraya Chatthanathon, Alisa Wilantho, Naraporn Somboonna, Tanapat Palaga, Prapaporn Pisitkun, Asada Leelahavanichkul



Supplementary Figure S1 Representatives of flow-cytometric analysis of splenocyte from WT, FcγRIIb^{-/-} and pristane mice with and without DSS in necrotic cells (propidium iodide; PI +ve), early apoptosis cells (Annexin V +ve, PI –ve), late apoptosis cells (Annexin V +ve, PI +ve), apoptotic macrophage in spleen (Annexin V +ve, F4/80 +ve) and apoptotic B cell in spleen (Annexin V +ve, B220 +ve) were indicated (n = 4-6 per group).

Leaky-gut enhanced lupus progression in the Fc gamma receptor-IIb deficient and pristane-induced mouse models of lupus

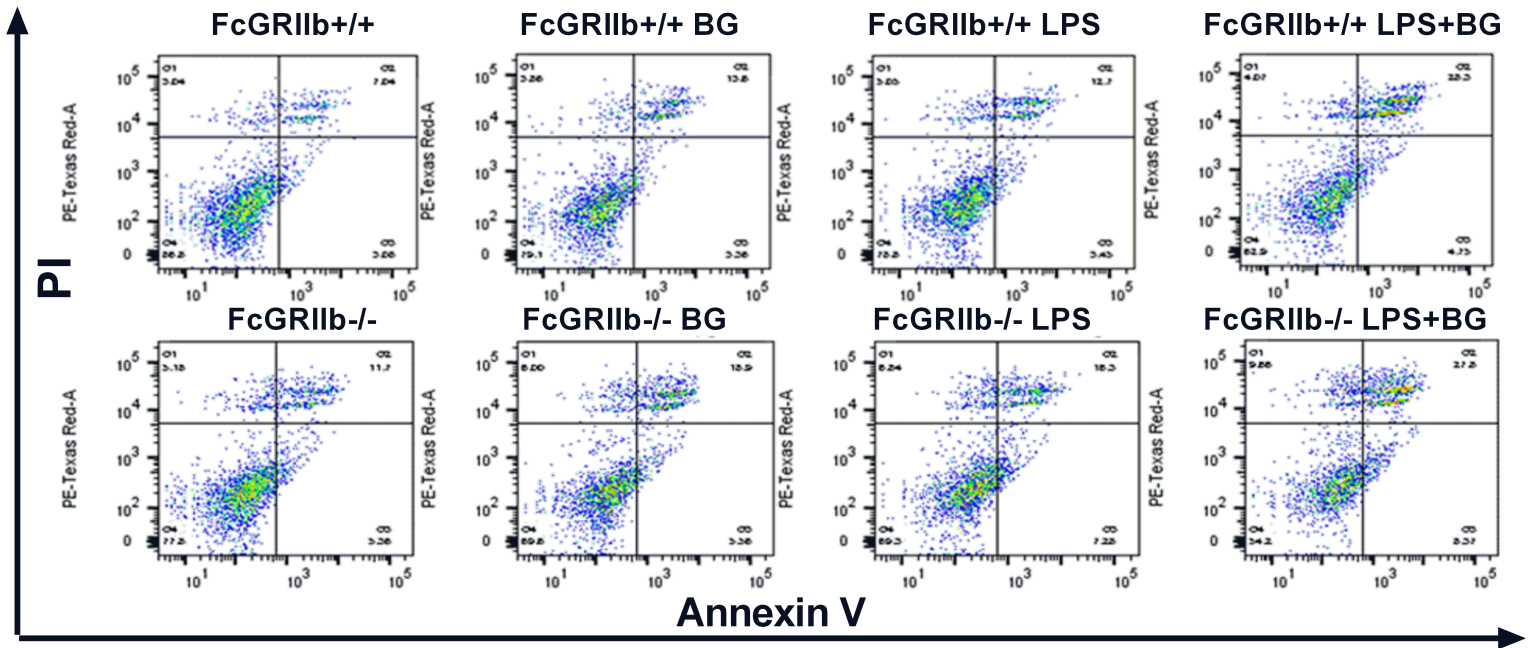
Arthid Thim-uam, Saowapha Surawut, Jiraphorn Issara-Amphorn, Thiranut Jaroonwichawan, Pratsanee Hiengrach, Piraya Chatthanathon, Alisa Wilantho, Naraporn Somboonna, Tanapat Palaga, Prapaporn Pisitkun, Asada Leelahavanichkul



Supplementary Figure S2 Representatives of flow-cytometric analysis of mesenteric lymph node (MLN) from WT, FcGRIIb^{-/-} and pristane mice with and without DSS as early as 15 days post-DSS in necrotic cells (propidium iodide; PI +ve), early apoptosis cells (Annexin V +ve, PI -ve), late apoptosis cells (Annexin V +ve, PI +ve), apoptotic macrophage (Annexin V +ve, F4/80 +ve) and apoptotic B cell (Annexin V +ve, B220 +ve) were indicated (n = 4-6 per group).

Leaky-gut enhanced lupus progression in the Fc gamma receptor-IIb deficient and pristane-induced mouse models of lupus

Arthid Thim-uam, Saowapha Surawut, Jiraphorn Issara-Amphorn, Thiranut Jaroonwitchawan, Pratsanee Hiengrach, Piraya Chatthanathon, Alisa Wilantho, Naraporn Somboonna, Tanapat Palaga, Prapaporn Pisitkun, Asada Leelahavanichkul



Supplementary Figure S3 Representatives of flow-cytometric analysis of FcGRIIb^{-/-} macrophage after LPS-stimulation with and without BG following by cell starvation (see method) to determine necrotic cells (propidium iodide; PI +ve), early apoptosis cells (Annexin V +ve, PI –ve) and late apoptosis cells (Annexin V +ve, PI +ve).