

Supplementary data

SP Table 1. Specific primers for SAg genes evaluation by PCR

Gen	Primers	Tm (°C)
tsst1 PR	TTTCCAATAACCACCCGTT	57,35
ttst 1 PF	ATGGCAGCATCAGCTTGATA	54,55
nuc PR	AGCCAAGCCTTGACGAACTAAAGC	63,88
nuc PF	GCGATTGATGGTGATACGGTT	58,79
hsp60 PR	CCATAGCTTCTGAAATATAGCG	54,62
hsp60 PF	GGTTTACGACAAGGTATCGAC	56,48
sea PR	GAACCTTCCCATCAAAAACA	53,96
sea PF	TTGGAAACGGTTAAAACGAA	51,14
seb PR	GCAGGTACTCTATAAGTGCC	55,05
seb PF	TCGCATCAAACCTGACAAACG	57,34
sec PR	AAATCGGATTAACATTATCC	49,60
sec PF	GACATAAAAGCTAGGAATTT	48,61
sed PR	TAATGCTATATCTTATAGGG	42,23
sed PF	CTAGTTTGGTAATATCTCCT	46,60
see PR	TAACCTACCGTGGACCCTC	50,00
see PF	TAGATAAAGTTAAAACAAGC	38,10
seg PR	CCAGATTCAAATGCAGAACC	57,77
seg PF	TGCTATCGACACACTACAACC	54,93
seh PR	GACCTTTACTTATTTTCGCTGTC	55,23
seh PF	CGAAAGCAGAAGATTTACACG	55,56
sei PR	CCATATTCTTTGCCTTACCAG	55,13
sei PF	GACAACAAAACCTGTCGAAACTG	56,68
sei PR2	GCCCTAGAGACTTTAAAATT	50,37
sej PR	TCTAGCGGAACAACAGTTCTGA	59,37
sej PF	CAGCGATAGCAAAAATGAAACA	56,25
ser PR	TCACATTGTAGTCAGGTGAACTTCT	61,30
ser PF	TGCTATCGACACACTACAACC	59,10

seo PF	AGTCAAGTGTAGACCCTATT	52,64
seo PR	TATGCTCCGAATGAGAATGA	53,95
sem PF	CCAATTGAAGACCACCAAAG	54,76
sem PR	CTTGTCTGTTCCAGTATCA	54,39
sen PF	ATGAAAAAATTAATAAGCA	52,57
sen PR	TTATATCGTTTCTTCAG	52,53
seu PR	GTGTGACCGAGCATGATGGA	60,11
seu PF	TCGCAGCTATGCAGAACAATC	59,06

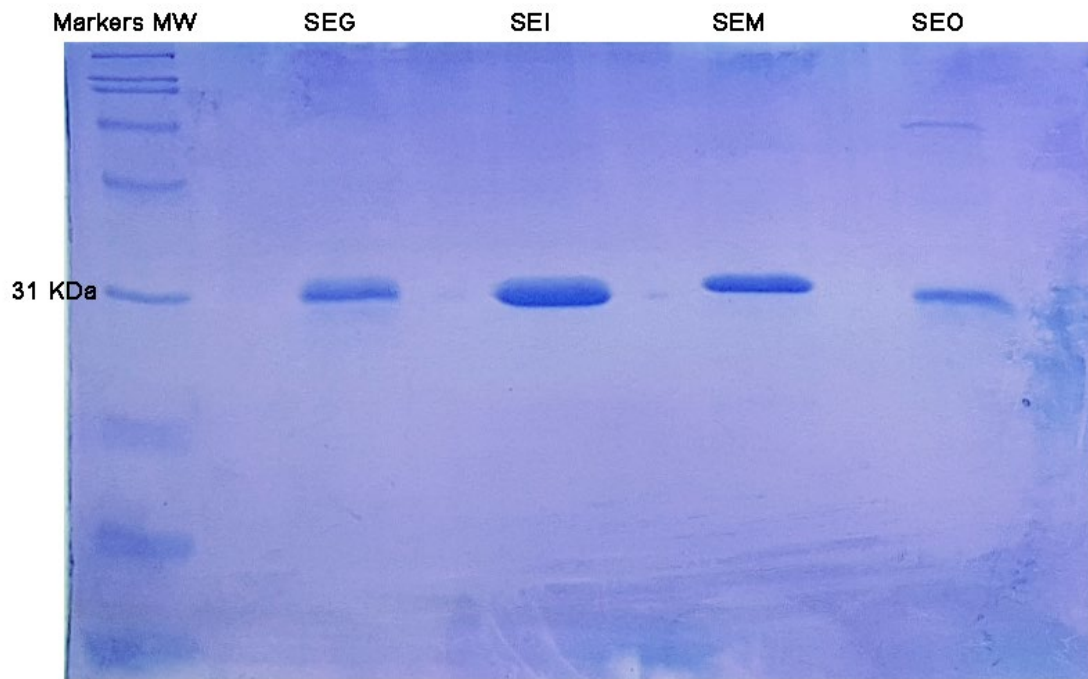
SP Table 2. Source and origin of *Staphylococcus aureus* isolates

Strain	Hospitalization area	Outpatient area	Sample	Diagnosis
40900	Medical surgery		Abscess	Septic hip loosening
41026	Traumatology		Wound	
41192	Hematology		Catheter	Febrile neutropenic
41226	Triage		Chest injury	
41395		Infectology	Abscess	
41399	Urology		Abscess	
41524	ICU		MiniBAL	Ventilator-associated infection
41598	ICU		BAL	Endovascular pathology, ventilator-associated infection.
41627	Medical surgery		Blood	Anemic syndrome
41668		Traumatology	Knee section	Cellulitis
41674	Medical surgery		Drainage	Weapon wound
41759	Medical surgery		Blood	
41762	Plastic surgery		Fistula	Gluteus silicone prosthesis

BAL: Bronchoalveolar lavage

SP Figure 1. SDS gel of the recombinant *egc* SAg.

Recombinant *egc* SAgS were purified by affinity and size exclusion chromatography. To evaluate the purity of the recombinant proteins, an electrophoretic chromatography under denaturant conditions (SDS gel) was carried out. The gel was stained with Coomassie blue. As it is showed, one band of proper molecular weight is observed in all cases, except dimmer form for SEO.



SP Figure 2. Bacteria phagocytosis by THP-1 cells is not affected by SAgS incubation. THP-1 cells were incubated with SAgS for 48h and phagocytosis capacity of fluorescent bacteria was measured by flow cytometry. Data are expressed as the mean \pm SEM of at least three independent experiments. Asterisks represent statistical significance with respect to untreated cells within each treatment: ns= non-significant difference.

