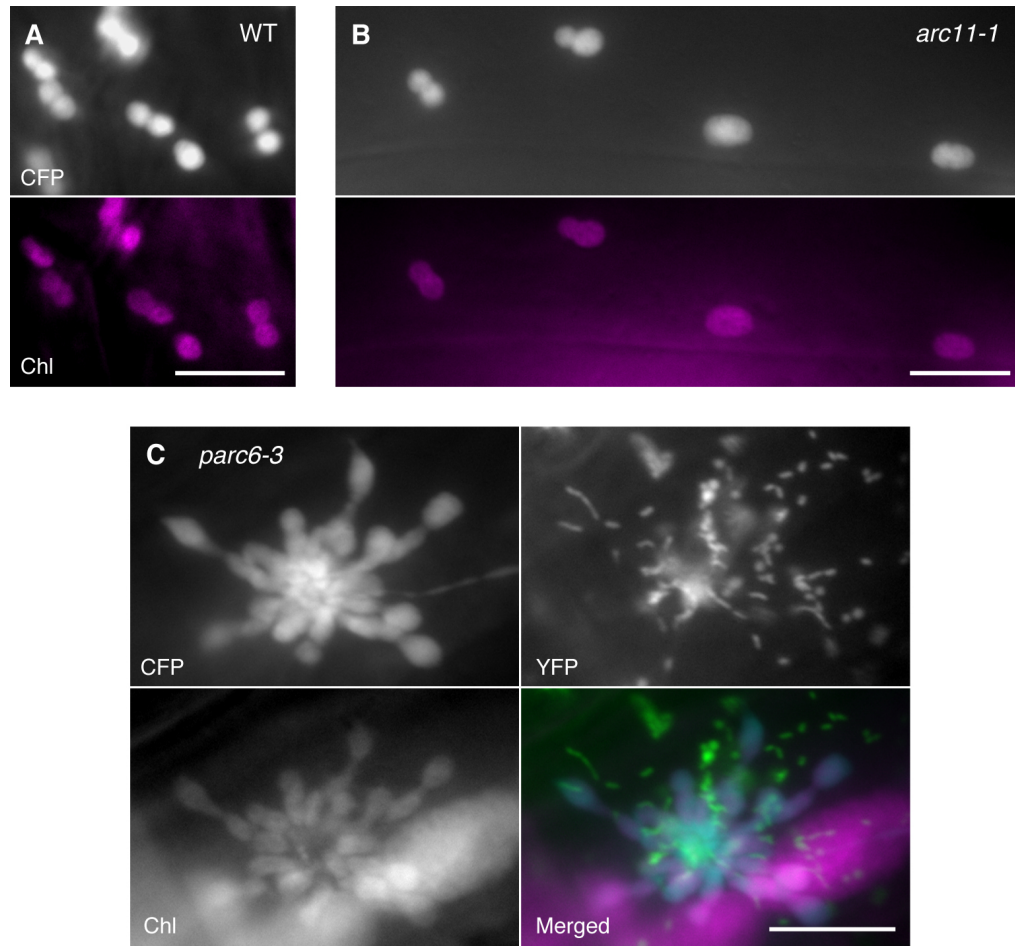


*Supplementary Material*



**Supplementary Figure S1.** Morphology of plastids in leaf epidermal pavement cells of *arc11* and *parc6* mutants. (A–C) Images of pavement cells in the 3<sup>rd</sup> and 4<sup>th</sup> leaf petioles of 2-week-old wild-type (WT) (A), *arc11-1* (B) and *parc6-3* (C) seedlings. Images of stroma-targeted CFP, matrix-targeted YFP or chlorophyll autofluorescence (chl), and a merged image of CFP (cyan), YFP (green) and chl (magenta) (C) are shown. Scale bar = 10  $\mu$ m.