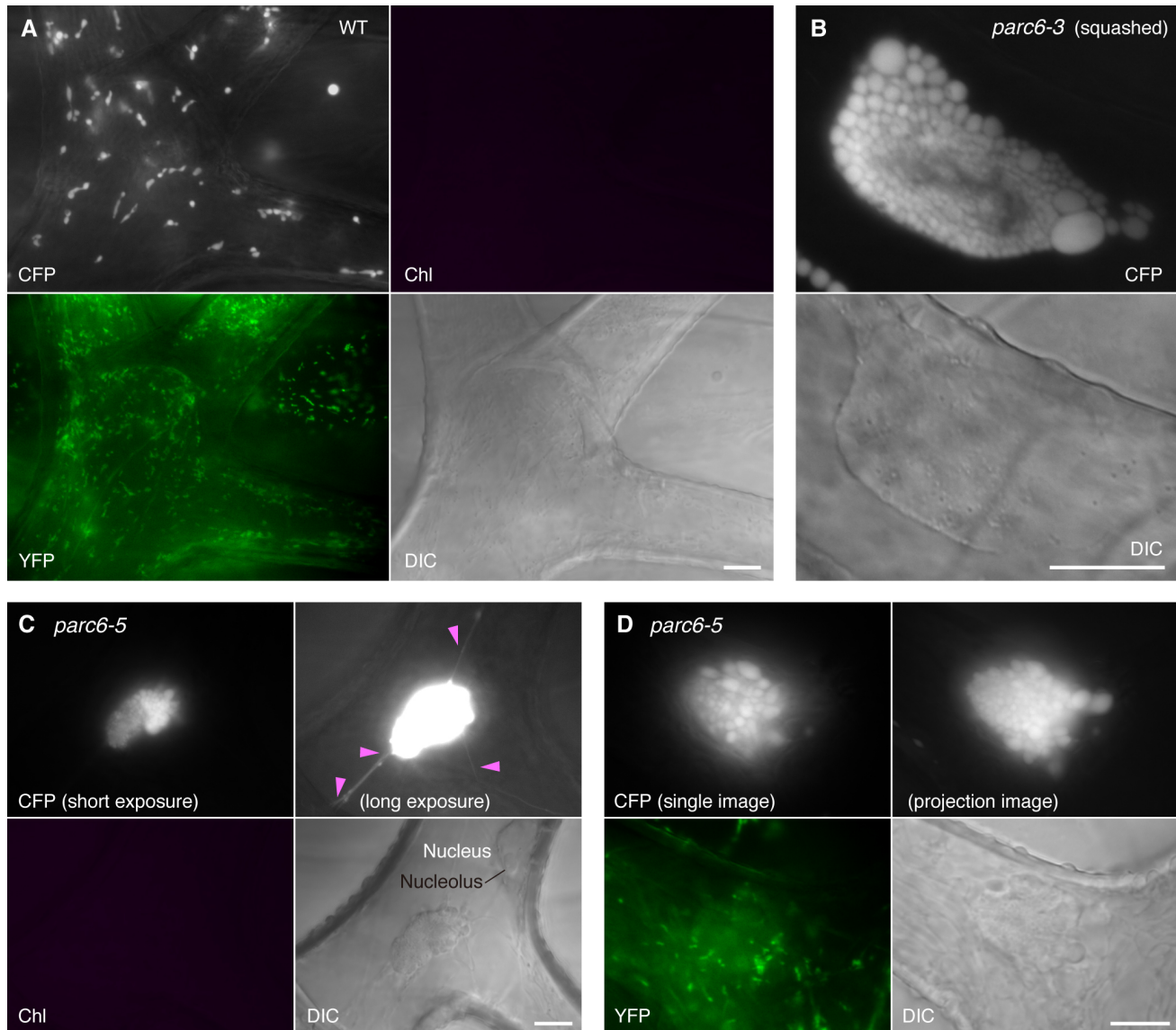


Supplementary Material



Supplementary Figure S2. Morphology of plastids in leaf trichome cells of *parc6* mutants. (A–D) Images of mature trichomes in leaf petioles of WT (A), *parc6-3* (B), and *parc6-5* (C, D) seedlings. The 3rd and 4th leaves of 2-week-old seedlings were mainly observed. Images of stroma-targeted CFP, matrix-targeted YFP (green), chlorophyll autofluorescence (magenta) or DIC are shown. Grape-like plastid aggregations were observed in a slightly squashed cell (B), with a different exposure time (C), or at distinct foci (D) (a projection image constructed from four images). Arrowheads indicate stromules. Scale bar = 10 μ m.