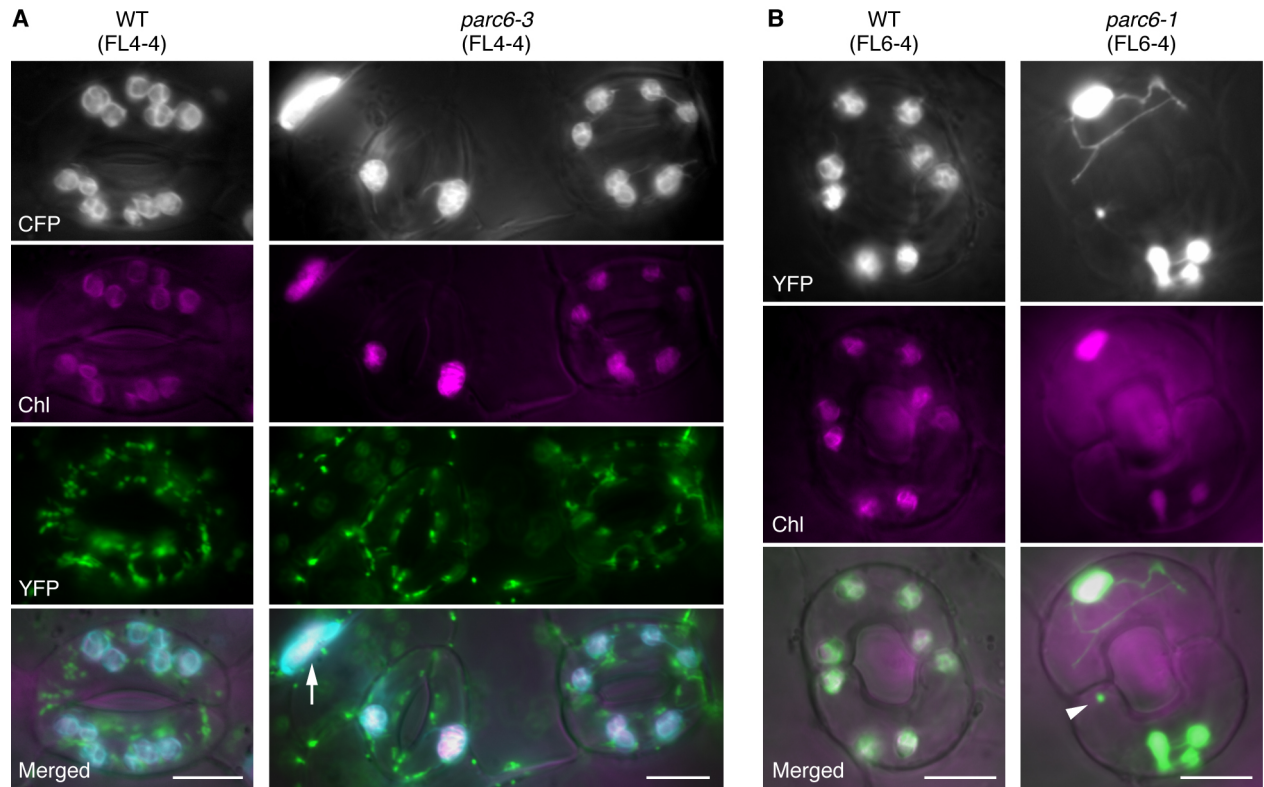


*Supplementary Material*



**Supplementary Figure S3.** Morphology of plastids in leaf stomatal guard cells of *parc6* mutants. **(A, B)** Images of guard cells in 4-week-old WT (FL4-4), *parc6-3* (FL4-4-derived), WT (FL6-4), and *parc6-1* (FL6-4-derived) seedlings. Fluorescence images of stroma-targeted CFP **(A)** or YFP **(B)** (black-and-white in top panels; pseudo-colored in cyan or green in bottom panels, respectively), chlorophyll (pseudo-colored in magenta), and matrix-targeted YFP **(A)** (pseudo-colored in green), and merged images of fluorescence and DIC are presented. Scale bar = 10  $\mu$ m.