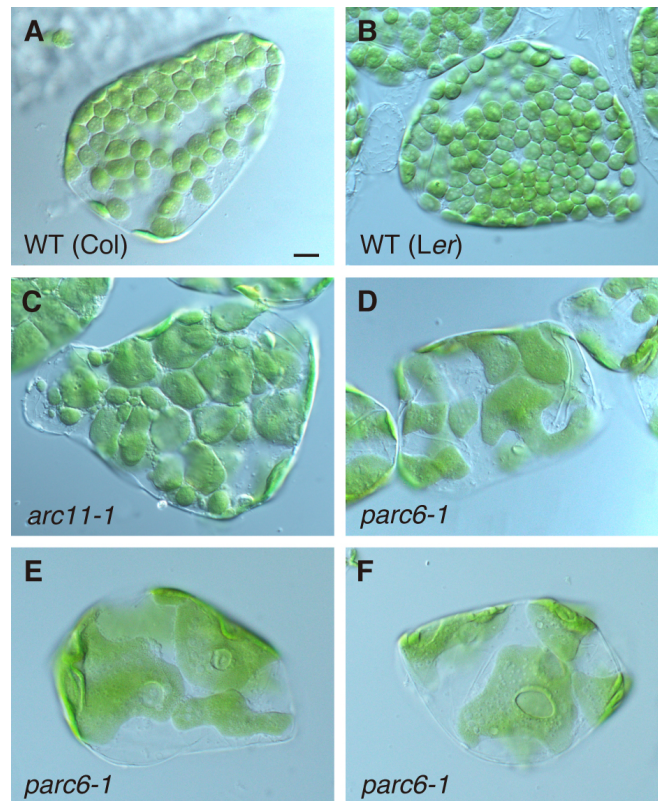


## Supplementary Material



**Supplementary Figure S4.** Morphology of plastids in leaf mesophyll cells of *arc11* and *parc6* mutants. (A–F) Images of mesophyll cells in leaf blades of WT (Col) (A), WT (Ler) (B), *arc11-1* (C), and *parc6-1* (D–F) seedlings. Scale bar = 10  $\mu$ m.