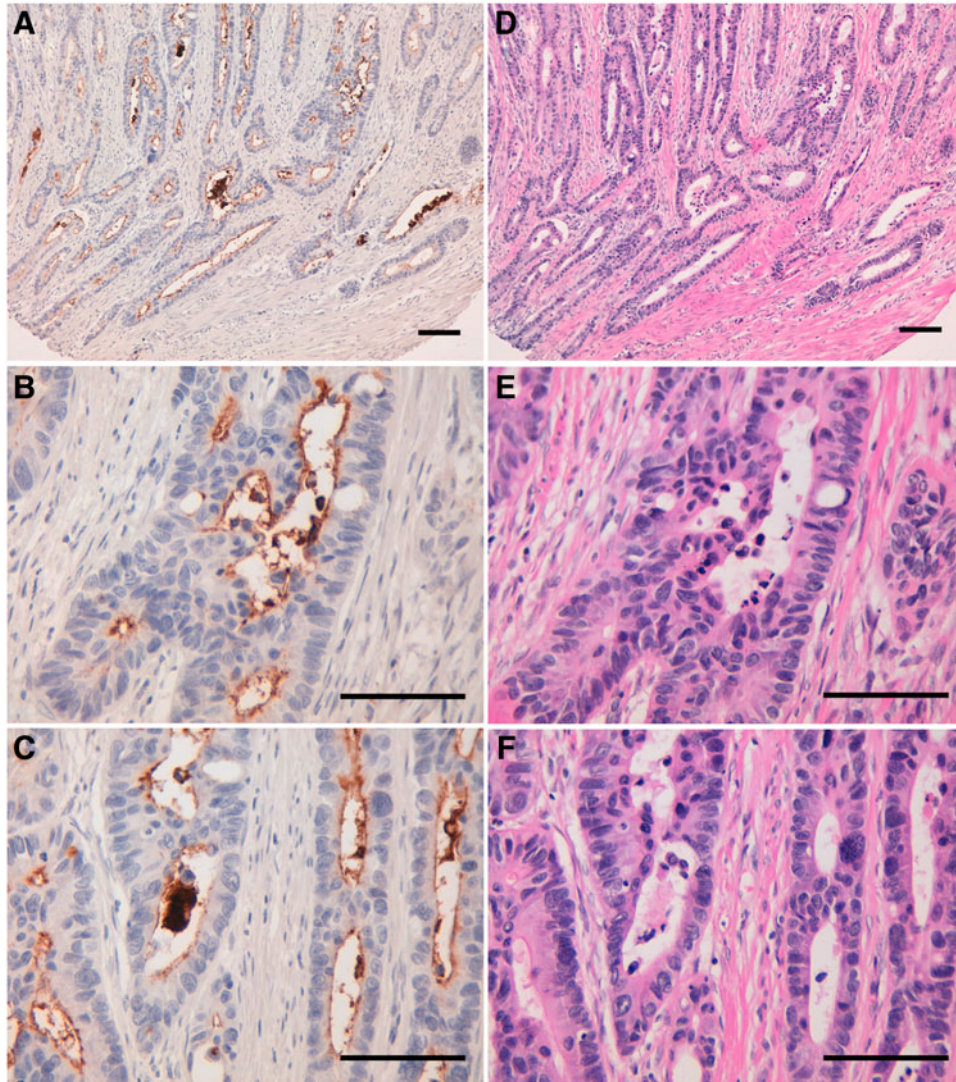


Supplementary Data



SUPPLEMENTARY FIG. S1. Immunohistochemical analysis of colon cancer by CMAb-43. (A–C) Sections of colon cancer (Case No. 1) were incubated with 1 $\mu\text{g}/\text{mL}$ of CMAb-43, followed by the Envision+ kit. Color was developed using DAB and counterstained with hematoxylin. (D–F) Serial sections were also stained using hematoxylin and eosin. Scale bar: 100 μm . DAB, 3,3-diaminobenzidine tetrahydrochloride.