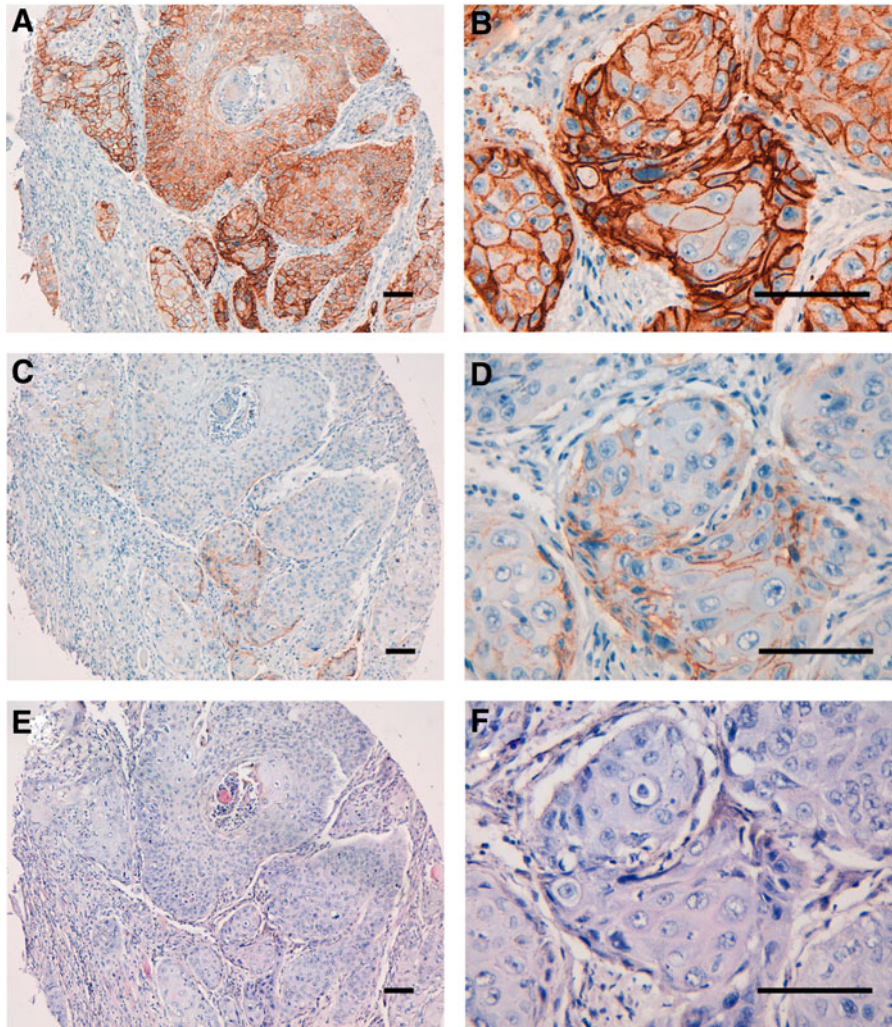


## Supplementary Data



**SUPPLEMENTARY FIG. S1.** Immunohistochemical analysis by EMap-134 for oral cancers. After antigen retrieval, sections (Case 11) were incubated with 5  $\mu\text{g}/\text{mL}$  of primary EMap-134 for 1 hour at room temperature, followed by treatment with Envision+ kit for 30 minutes. Color was developed using 3,3-diaminobenzidine tetrahydrochloride for 2 minutes, and sections were then counterstained with hematoxylin. (A, B) Antigen retrieval using EnVision FLEX Target Retrieval Solution High pH; (C, D) antigen retrieval using citrate buffer, pH 6.0; (E, F) hematoxylin and eosin staining; scale bar = 100  $\mu\text{m}$ .