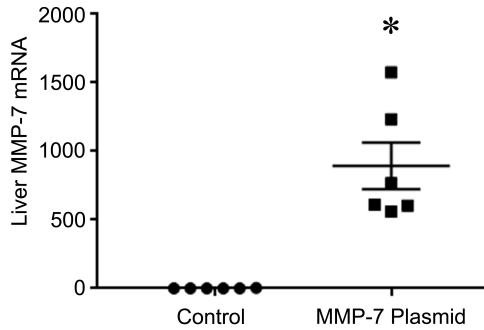
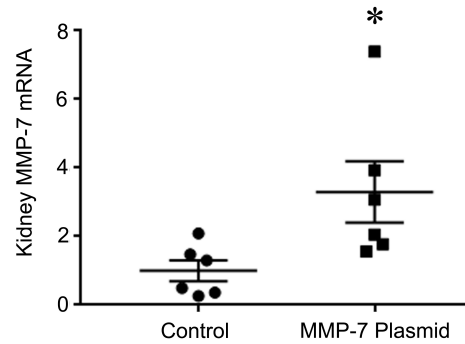
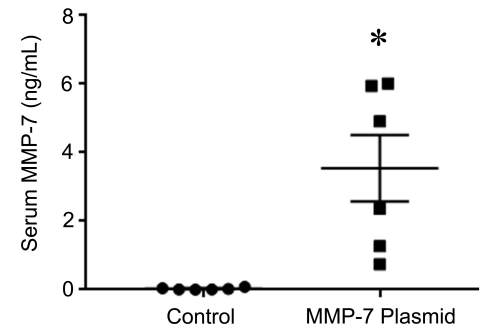
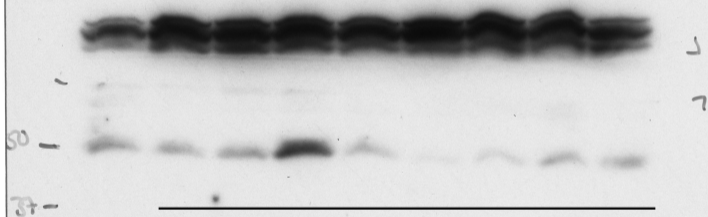


**A****B****C**

**Supplemental Figure 1. MMP-7 expression after plasmid injection.** MMP-7 plasmid was injected via tail vein in wild type mice. After 18 hours, mice were euthanized and liver, kidney, and serum obtained. mRNA levels of MMP-7 were measured in the (A) liver and (B) kidney and circulating serum protein levels were assessed with an ELISA. (\* P < 0.05, t-test).

FULL UNEDITED GEL FOR FIGURE 1G - WT1



CROPPED AREA (NOTE BLOT IS REVERSED IN FIGURE)

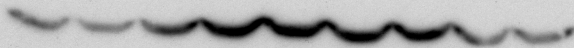
675 687 688 689    681 682 683 671    642  
KSPB-CATENIN    WILDTYPE    CTRL

← WT-1

1:500

1:5000 20  
mouse x 2hrs

1-31-14



7

actin

---

CROPPED AREA (NOTE BLOT IS REVERSED IN FIGURE)

✓

5 sec

FULL UNEDITED GEL FOR FIGURE 1G - ACTIN

KSP-β-CTD...

WT

CTRL

709 713 721 725 712 715 718 719 726

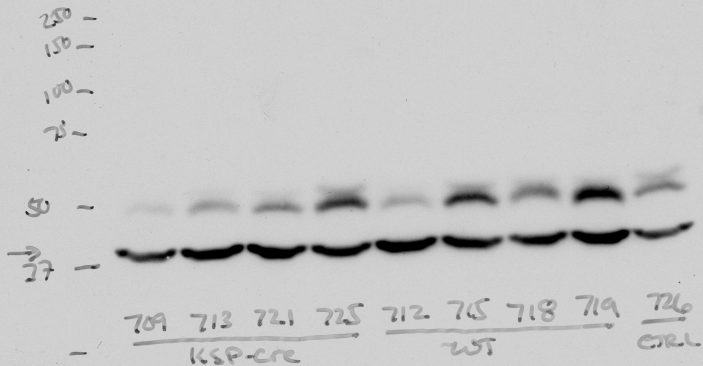
20  
20  
30  
1



CROPPED AREA (NOTE BLOT IS REVERSED IN FIGURE)

FULL UNEDITED GEL FOR FIGURE 3B - FIBRONECTIN

FULL UNEDITED GEL FOR FIGURE 3B - ACTIN



CROPPED AREA (NOTE BLOT IS REVERSED IN FIGURE)

1:5000 ACTIN  
1:30000 mabse

6-13-14  
NS sec.

FULL UNEDITED BLOT FOR FIGURE 4A - ACTIN

7

5sec

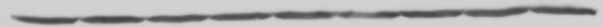
15.5  
15.5  
15.5

30.

37.

45.

50.



← ACTIN

1:10000

1:20000

more 2°  
x 2 hrs

709 713 721 725 715 718 719 712 726c

Keap

WT

c

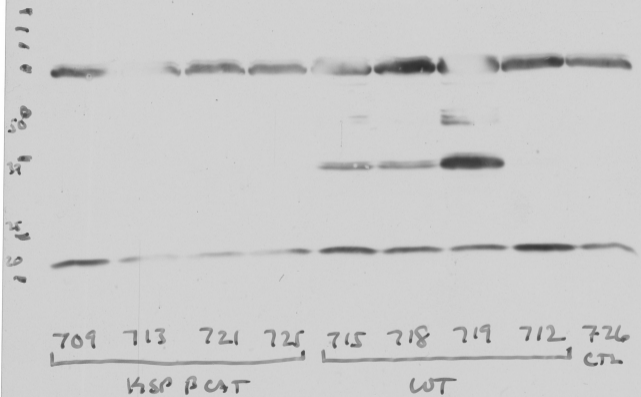
CROPPED AREA (BLOT IS REVERSED FOR FIGURE)

10-28-15

100ng

L

1 min



← MMP7

1: 500 MMP7  
(Genetex)

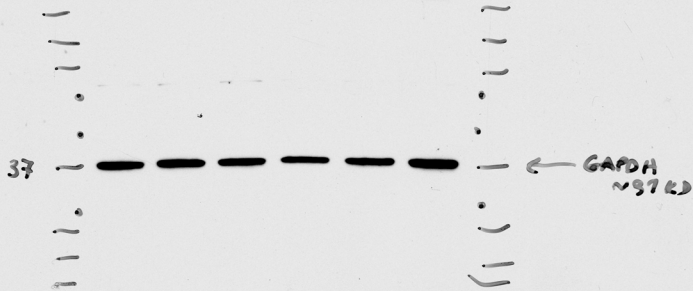
1: 3000 Abt 26

10-27-15

100 μg  
KSP βcat-3

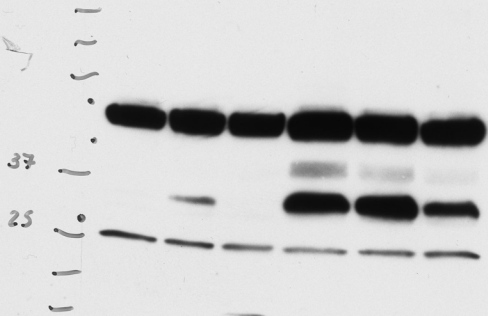
CROPPED AREA (BLOT IS REVERSED FOR FIGURE)

FULL UNEDITED BLOT FOR FIGURE 4A - MMP7



FULL UNCUT GEL FOR FIGURE 5D  
blot reversed in figure





← MMP-2  
~30kD

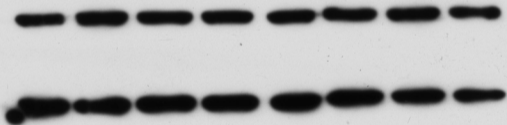
FULL UNCUT GEL FOR FIGURE 5D  
blot is reversed in figure

11/2/16

Actin

288

Actin



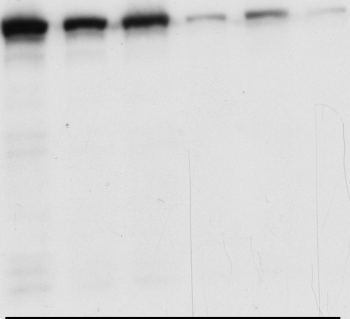
CROPPED AREA

FULL UNEDITED BLOT FOR FIGURE 6C - ACTIN

687  
C  
Nephrin  
3115111  
5' 15' 30' 1h 3h

250 -  
150 -  
50 -

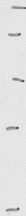
← Nephrin



CROPPED AREA

FULL UNEDITED BLOT FOR  
FIGURE 6C - NEPHRIN

37

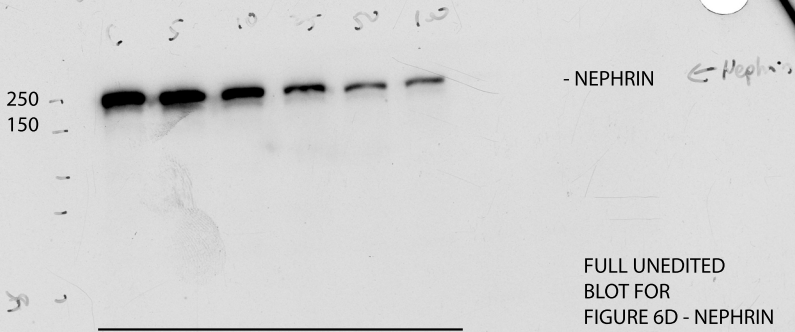


←  
Actin



CROPPED AREA

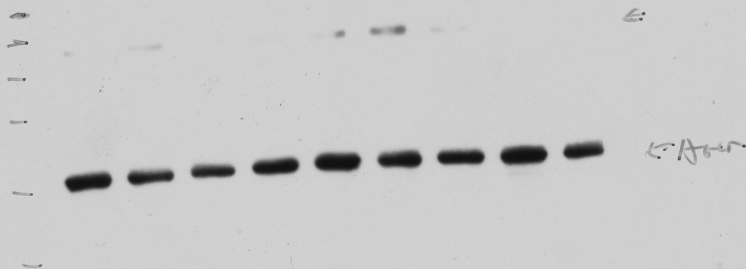
FULL UNEDITED BLOT FOR FIGURE 6D - ACTIN



FULL UNEDITED  
BLOT FOR  
FIGURE 6D - NEPHRIN

CROPPED AREA

698 ~~100~~ E-cadherin 7/7/01

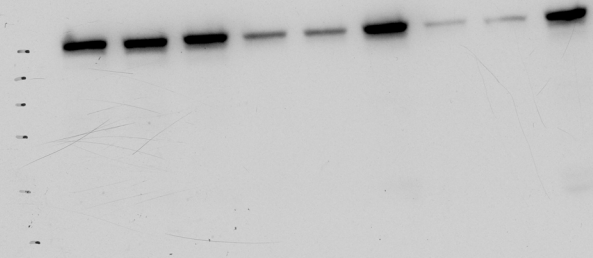


FULL UNCUT GEL FOR FIGURE 6E-ACTIN

698 Nephrin 4h/1h

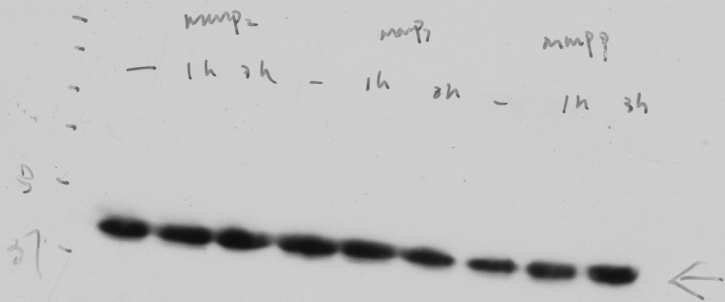
Nephrin 4h/1h			Nephrin 25min			Nephrin 5min 30'		
-	-	-	+	+	+	+	+	+
-	+	-	-	+	-	-	+	-
-	-	+	-	-	+	-	-	+

69600125  
Nephrin antibody  
20  
← p116



FULL UNCUT GEL FOR FIGURE 6E NEPHRIN

716 Actin 6/8/11

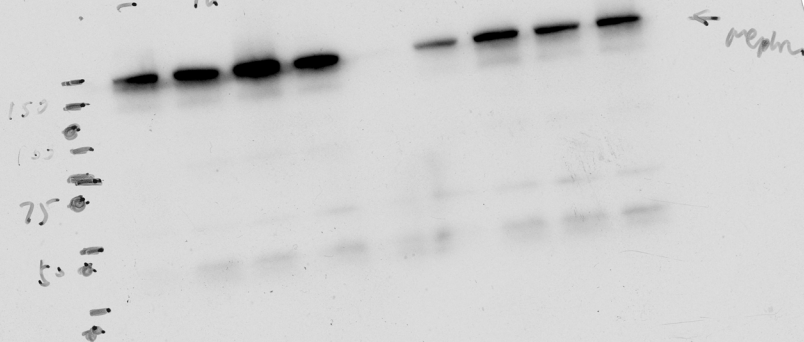


full uncut gel for fig 7a - actin



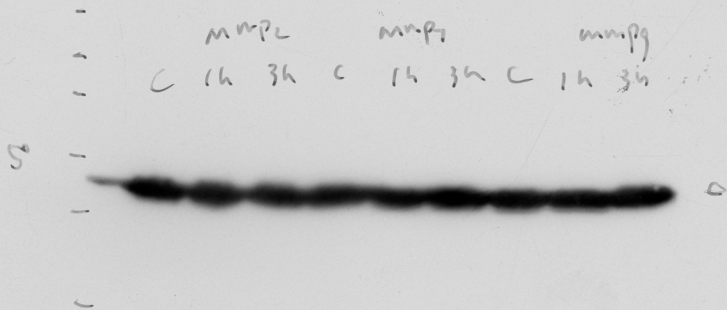
GI/Rat glomerular lys.

716 Nephrin (Tubuli) 6/2/2011  
mmp2 (ug/ml) mmp3 (ug/ml) mmp9 (ug/ml)  
- 16 36 - 1 3 - 1 4 mmpch



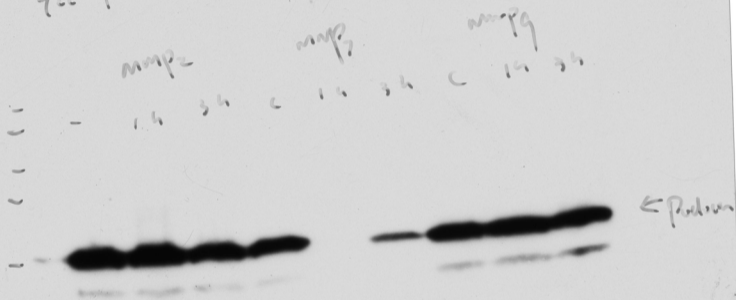
full uncut gel for fig 7a - nephrin

722 Actin 2/1/11

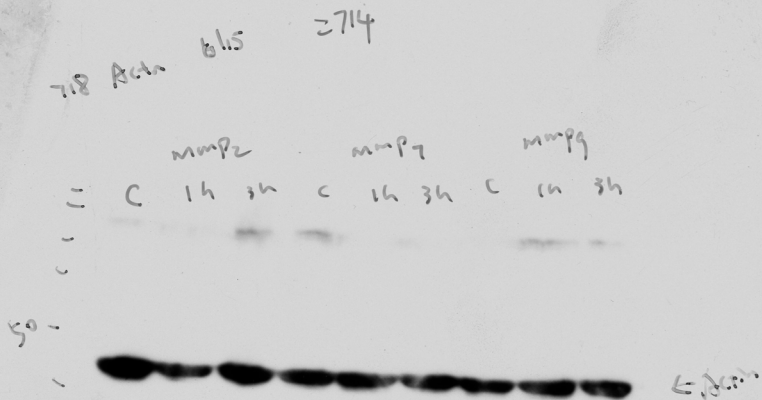


full uncut gel for fig 7b-actin

722 podocin 6/28/11

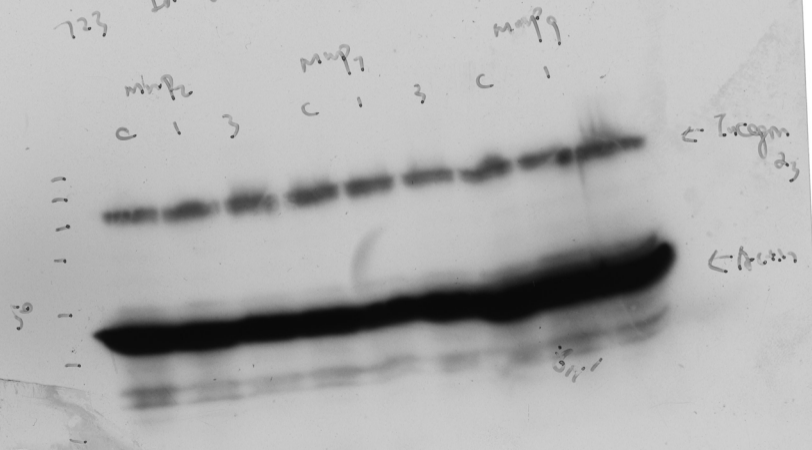


full uncut gels for fig 7b podocin



full uncut gel for fig 7c actin

723 Integrin  $\alpha_3$  6/23/11



full uncut gel for fig 7c integrin alpha

716 Integrin  $\beta$  6/3/11

mmp2

mmp3

mmp9

0

1h

2h

0

1h

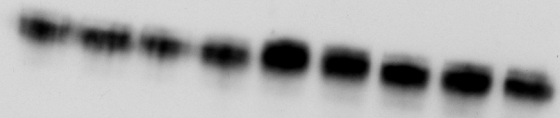
2h

0

1h

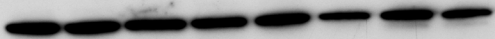
2h

100  
75  
50



← Integrin

full uncut gel for fig 7c integrin beta



CROPPED AREA

---

FULL UNEDITED GEL FOR FIGURE 8A - GAPDH

693 Nephin 293 3/24/01 TT Nephin 241  
L 15' 30' ch 1000p7 50001



FULL UNEDITED GEL FOR FIGURE 8A - NEPHRIN





CROPPED AREA

---

FULL UNEDITED GEL FOR FIGURE 8B - GAPDH

FULL UNEDITED BLOT FOR FIGURE 8B - NEPHRIN

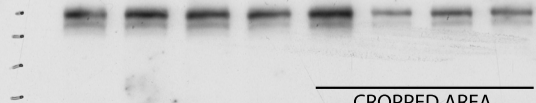
696 293 nephrin 3/31/11

nrp7 30nm time

nm. 30' dose

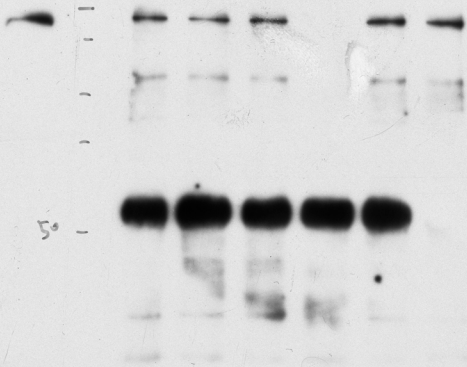
C 15' 30' 1h

C 10 25 50



← nephrin

CROPPED AREA

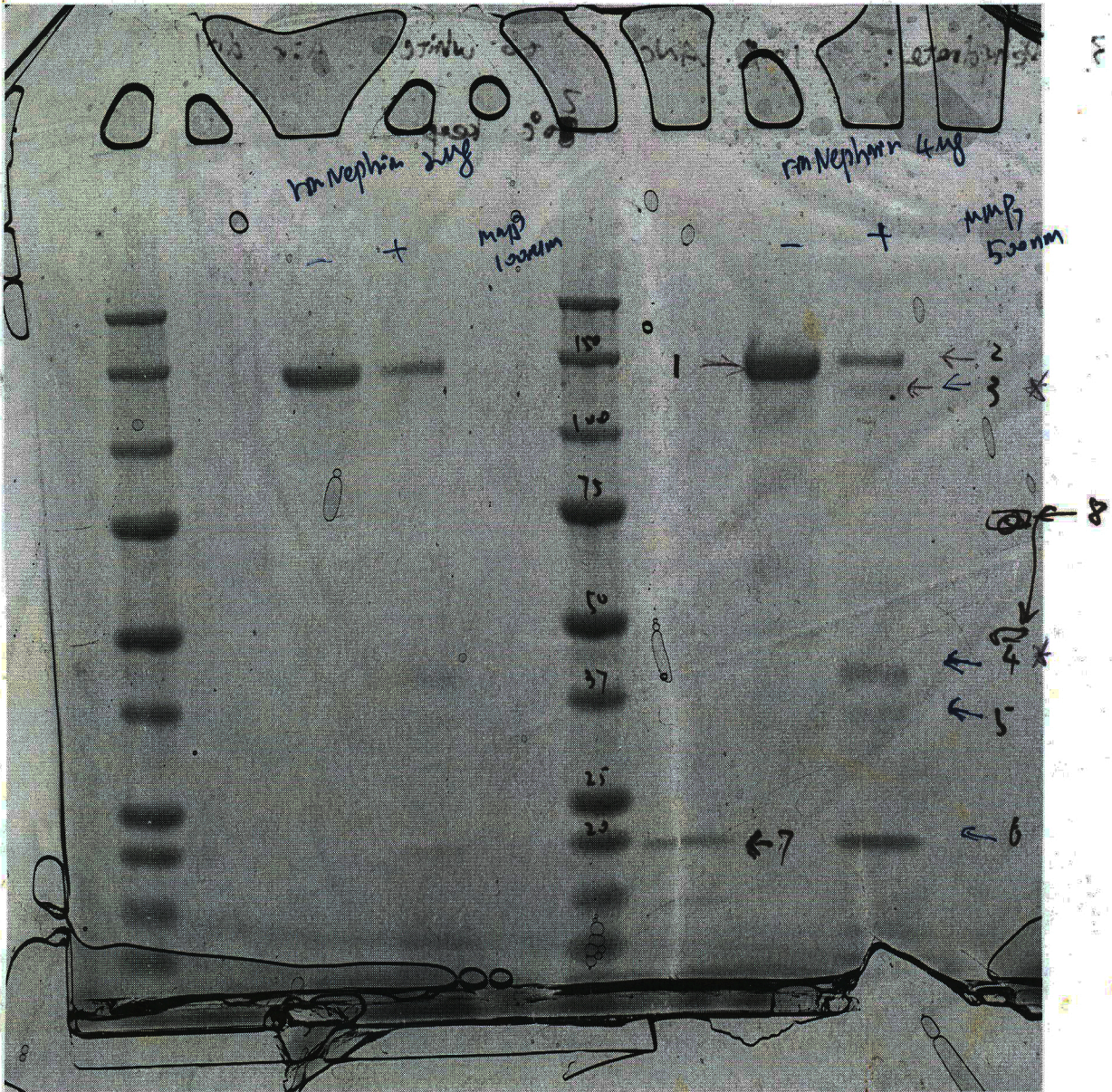


← Nephroin

50

CROPPED AREA

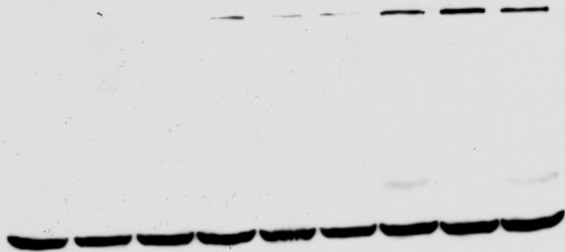
FULL UNEDITED BLOT FOR FIGURE 8C



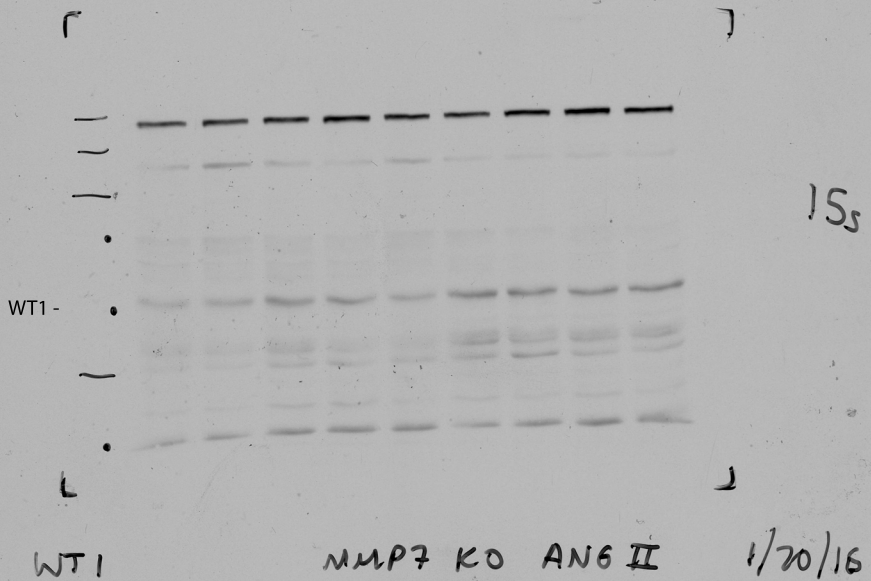
CROPPED AREA

FULL UNEDITED GEL FOR FIGURE 8D

01/11/11 II alpha or gamma nitro A



FULL UNEDITED GEL FOR FIGURE 10E - ACTIN



FULL UNEDITED GEL FOR FIGURE 10E - WT1