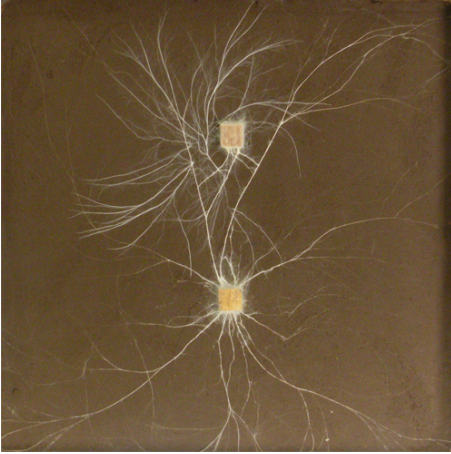
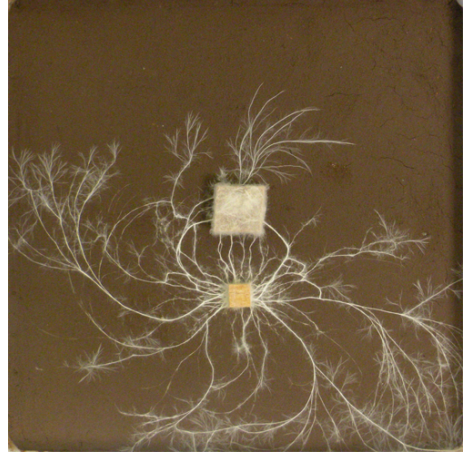


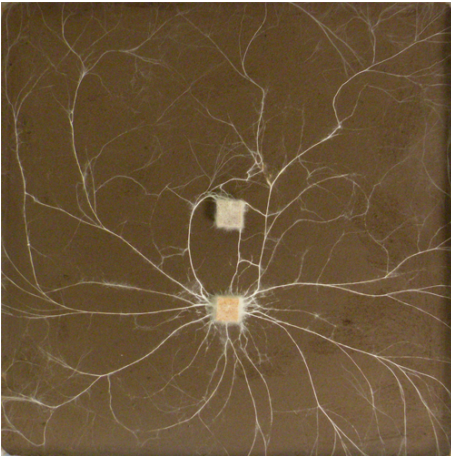
0.5 cm³ bait



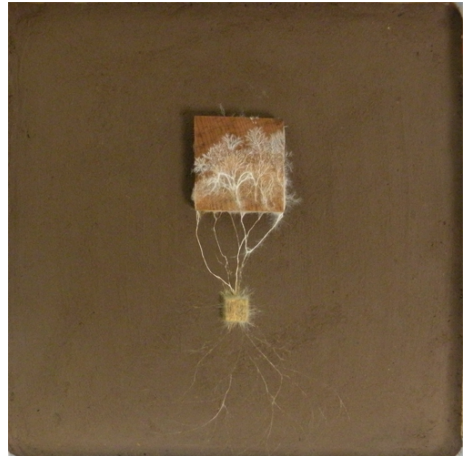
4 cm³ bait



1 cm³ bait



16 cm³ bait



2 cm³ bait

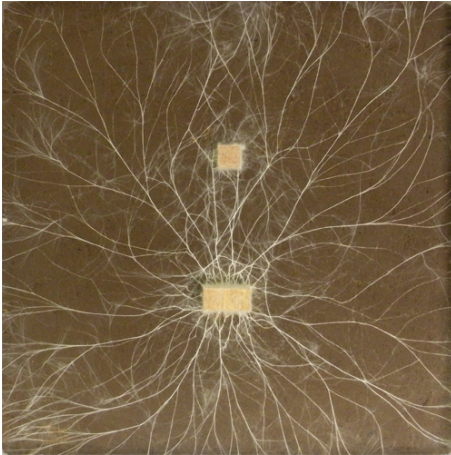


36 cm³ bait

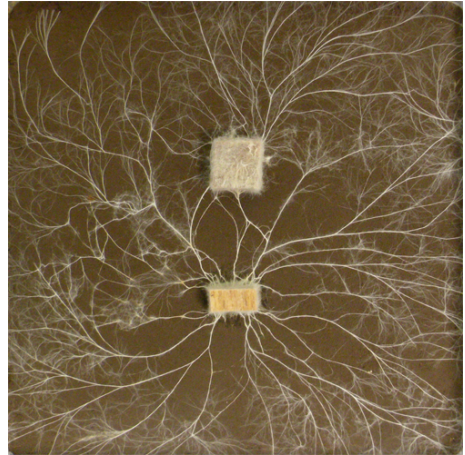


Fig. S4a Typical images of soil microcosms for 0.5 cm³ inoculum 48 days after coupled with baits of six different sizes. Bottom blocks are inoculum and top blocks are bait.

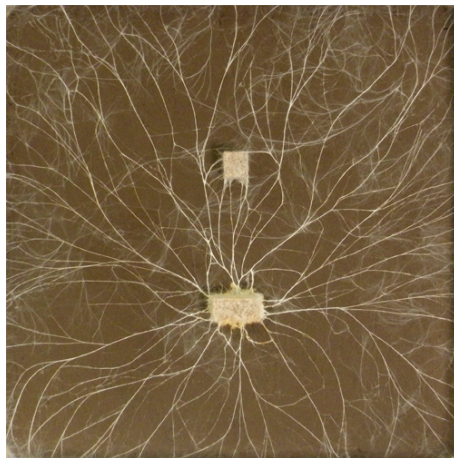
0.5 cm³ bait



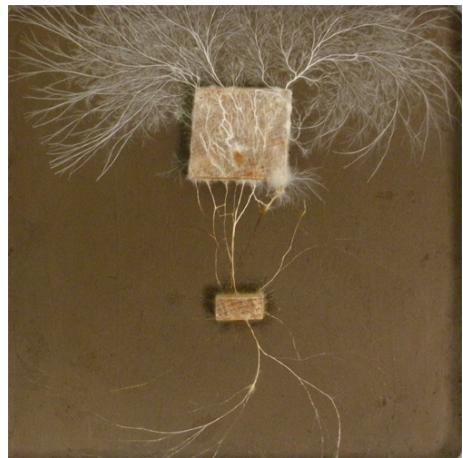
4 cm³ bait



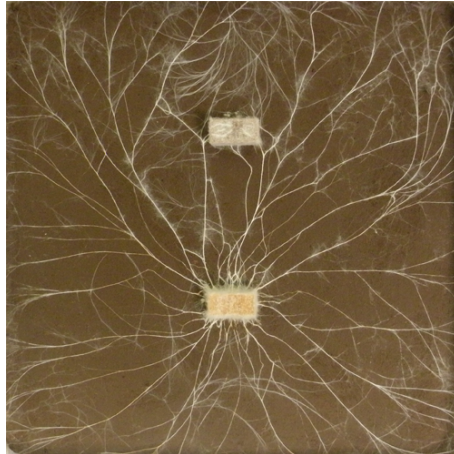
1 cm³ bait



16 cm³ bait



2 cm³ bait



36 cm³ bait

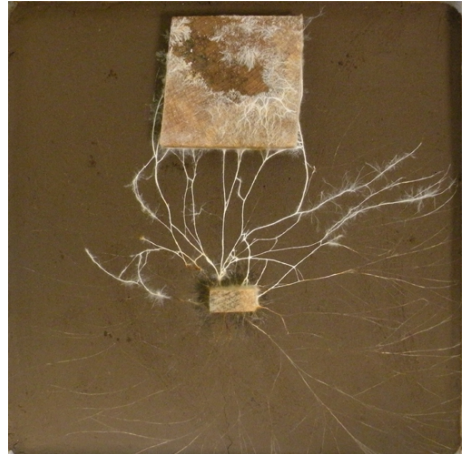
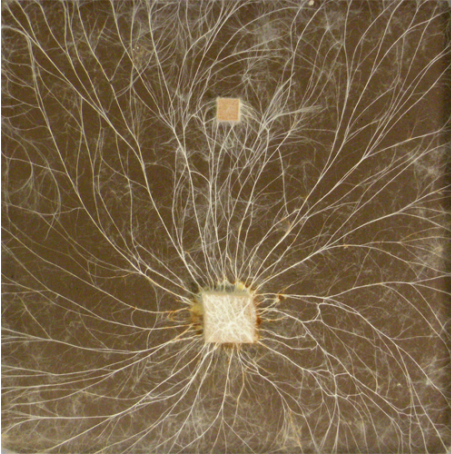
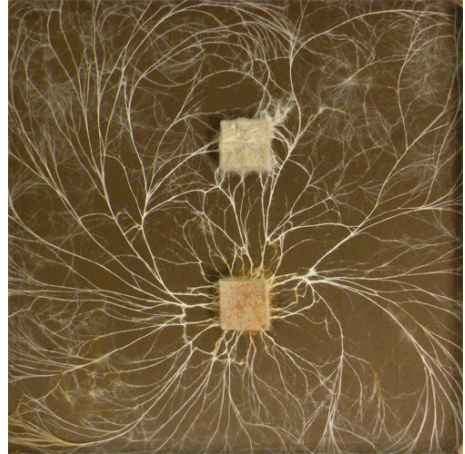


Fig. S4b Typical images of soil microcosms for 2 cm³ inoculum 48 days after coupled with baits of six different sizes. Bottom blocks are inoculum and top blocks are bait.

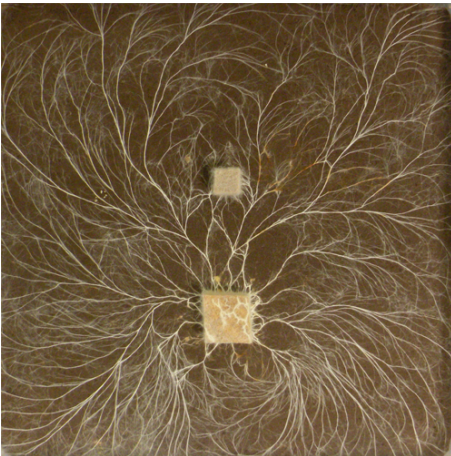
0.5 cm³ bait



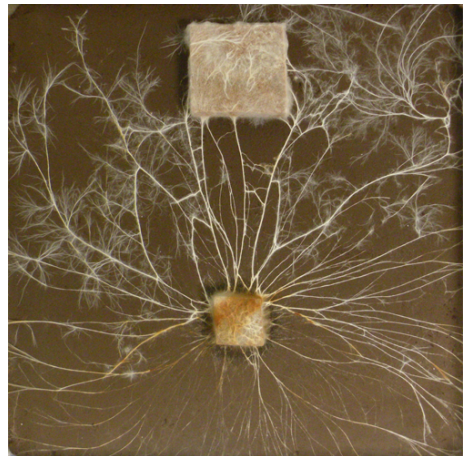
4 cm³ bait



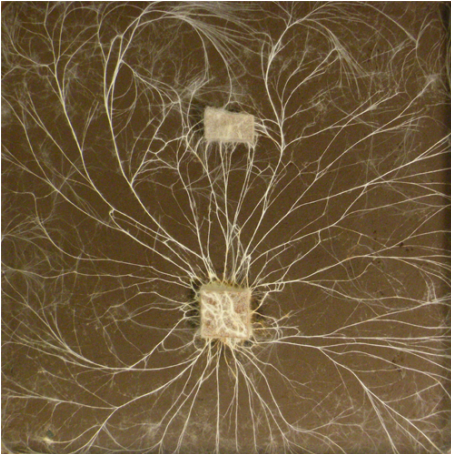
1 cm³ bait



16 cm³ bait



2 cm³ bait



36 cm³ bait

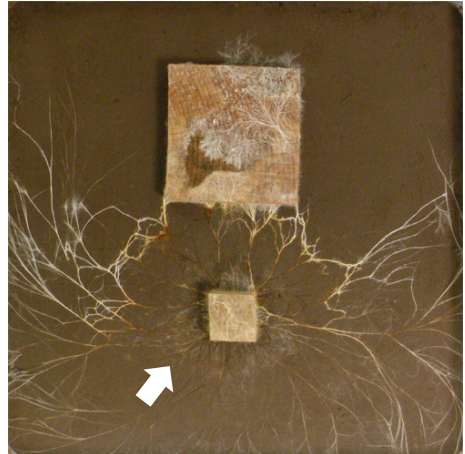


Fig. S4c Typical images of soil microcosms for 4 cm³ inoculum 48 days after coupled with baits of six different sizes. Bottom blocks are inoculum and top blocks are bait. Arrow indicates dieback of mycelium surrounding inoculum.