

Supplementary Information

G Protein-Coupling of Adhesion GPCRs ADGRE2/EMR2 and ADGRE5/CD97, and Activation of G Protein Signalling by an Anti-EMR2 Antibody

Nisha Bhudia¹, Sapna Desai¹, Natalie King², Nicolas Ancellin³, Didier Grillot³, Ashley A. Barnes⁴ and Simon J. Dowell^{1*}

¹Medicinal Science and Technology, GlaxoSmithKline, Stevenage, UK; ²Excelya Clinical Research, Boulogne-Billancourt, France; ³Oncodesign, Villebon-Sur-Yvette, France; ⁴Censo Biotechnologies Ltd, Babraham, UK

*Corresponding author

Contact details:

Nisha Bhudia (nisha.6.bhudia@gsk.com)

Sapna Desai (sapna.x.desai@gsk.com)

Natalie King (eilatan90@gmail.com)

Nicolas Ancellin (nicolas.ancellin@oncodesign.com)

Didier Grillot (didier.grillot@oncodesign.com)

Ashley Barnes (ashley.barnes@censobio.com)

Simon Dowell (simon.j.dowell@gsk.com) – corresponding author

Figure S1

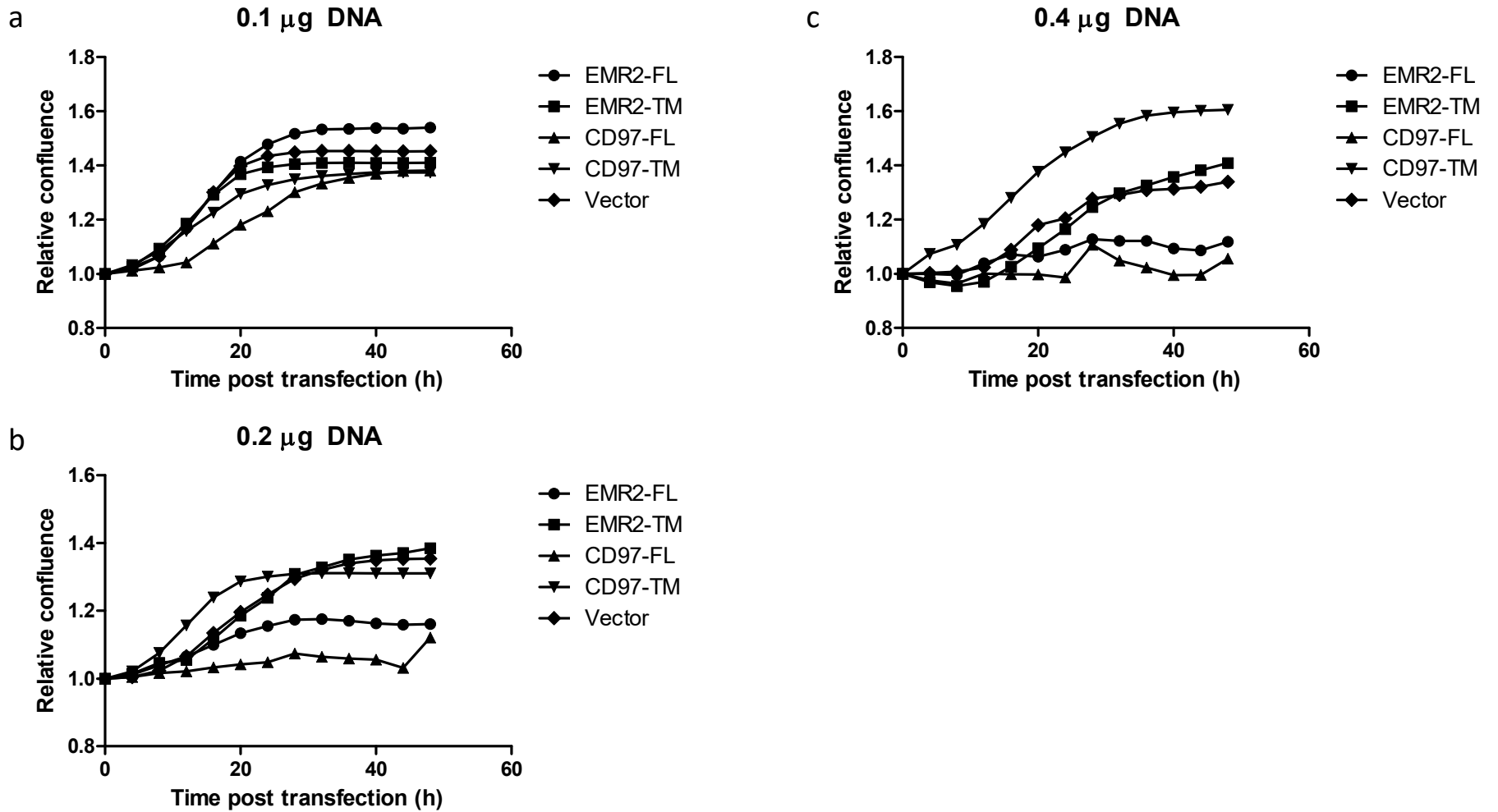
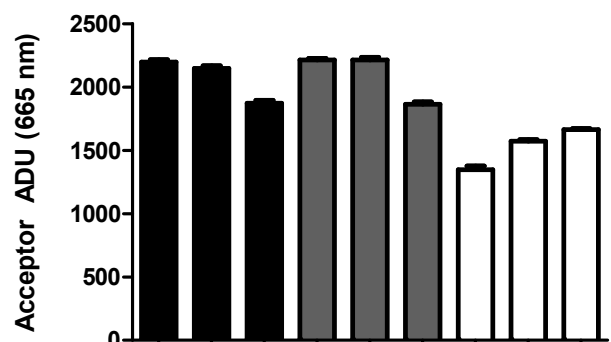


Figure S2

a

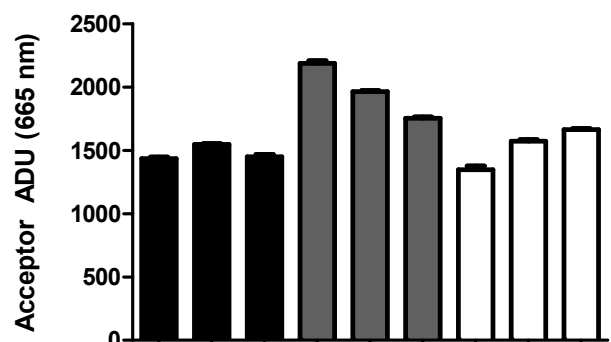
EMR2



DNA [$\mu\text{g}/\text{cm}^2$]	0.4	0.2	0.1	0.4	0.2	0.1	0.4	0.2	0.1
Construct	EMR2-FL			EMR2-CTF			Vector		

b

CD97



DNA [$\mu\text{g}/\text{cm}^2$]	0.4	0.2	0.1	0.4	0.2	0.1	0.4	0.2	0.1
Construct	CD97-FL			CD97-CTF			Vector		

Figure S3

