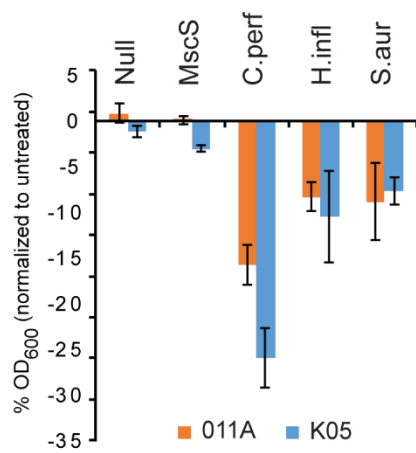


Supplemental; Small compounds modulate and bind MscL similarly

S2 Fig. MscL orthologues show a similar growth restriction profile for 011A and K05. Reduction in bacterial growth (OD₆₀₀) for cultures of the *E. coli* MJF455 strain carrying empty plasmid (null), or expressing Eco-MscS (MscS), *C. perfringens* (C. perf), *S. aureus* (S. aur), or *H. influenza* (H. infl) constructs treated with compounds 011A (orange) and K05 (blue) at 60uM relative to non-treated are shown. Values represent the mean of four experiments and error bars are the SEM.