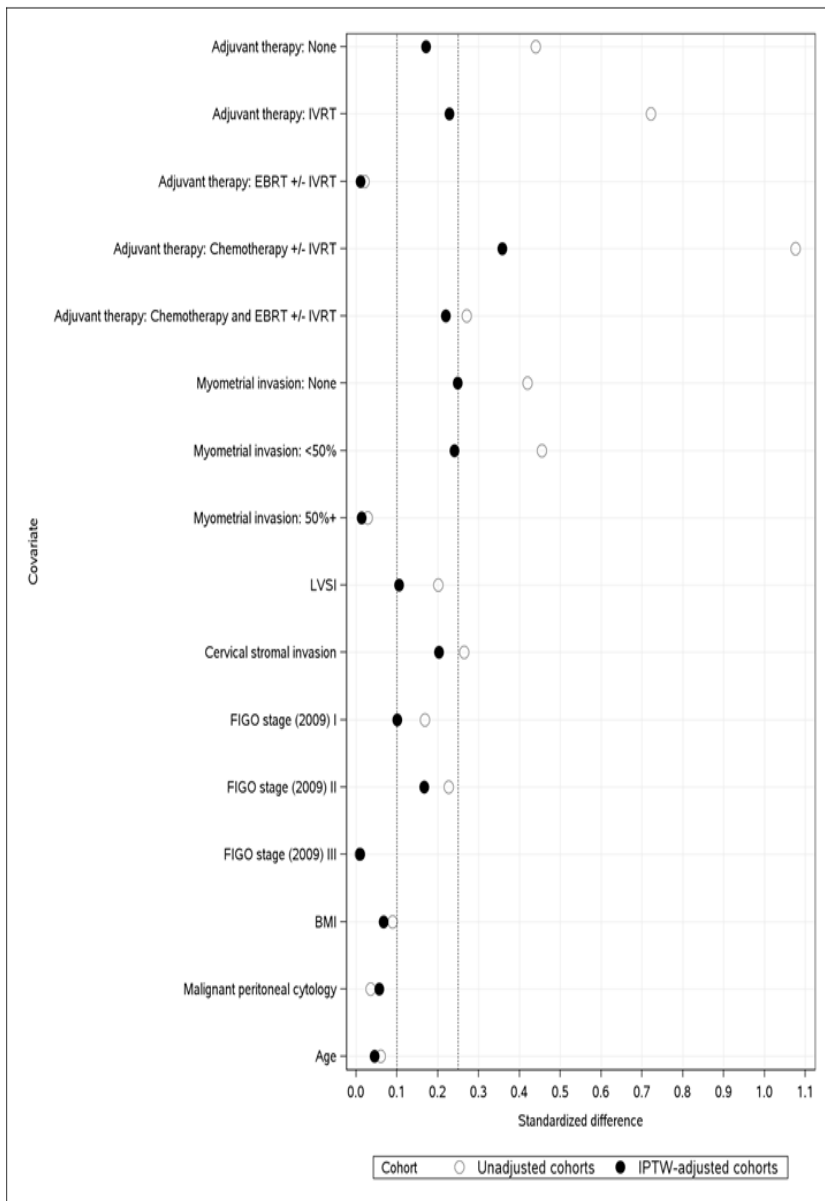


Supplemental Figure 1. Standardized differences (absolute value) for each covariate used in the derivation of the propensity scores for the analysis of all patients. In the IPTW-adjusted cohorts the covariates were more balanced between the SLN and LND cohorts with all standardized differences below the 0.25 threshold and the majority below the 0.10 threshold.

BMI=body mass index, EBRT=external beam radiation therapy, FIGO=International Federation of Gynecology and Obstetrics, IPTW=inverse-probability of treatment weighting, IVRT=intravaginal brachytherapy, LND=lymphadenectomy, LVSI=lymphovascular space invasion, SLN=sentinel lymph node



Supplemental Figure 2. Standardized differences (absolute value) for each covariate used in the derivation of the propensity scores for the analysis of node-negative patients. In the IPTW-adjusted cohorts the covariates were more balanced between the SLN and LND cohorts with all but one of the standardized differences below the 0.25 threshold.

BMI=body mass index, EBRT=external beam radiation therapy, FIGO=International Federation of Gynecology and Obstetrics, IPTW=inverse-probability of treatment weighting, IVRT=intravaginal brachytherapy, LND=lymphadenectomy, LVSI=lymphovascular space invasion, SLN=sentinel lymph node