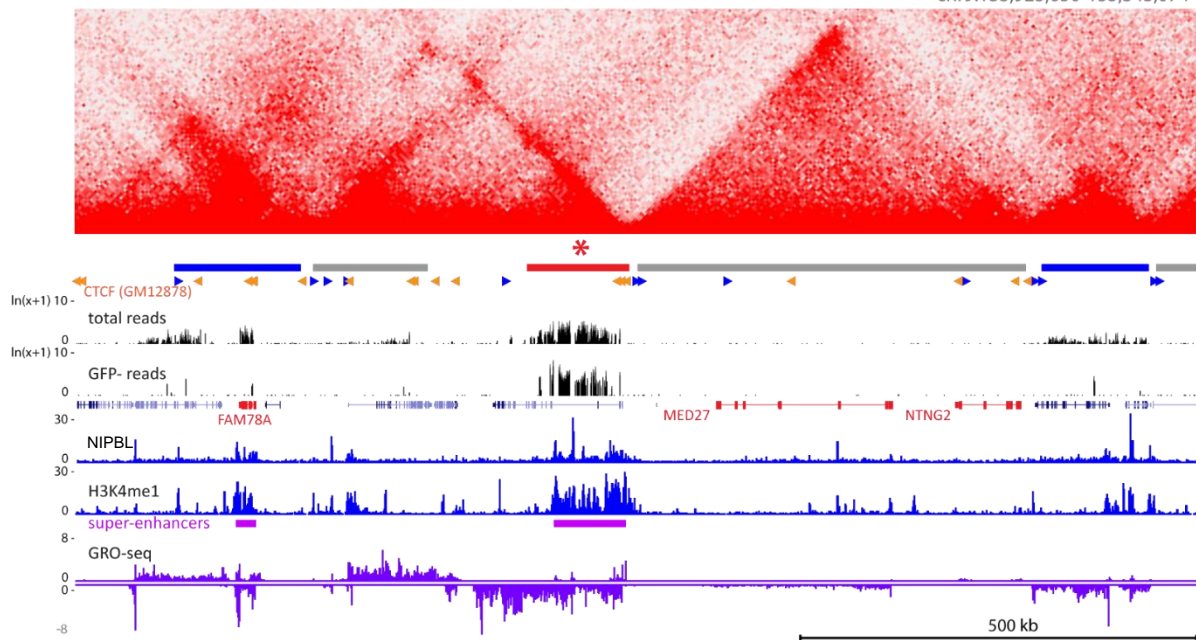
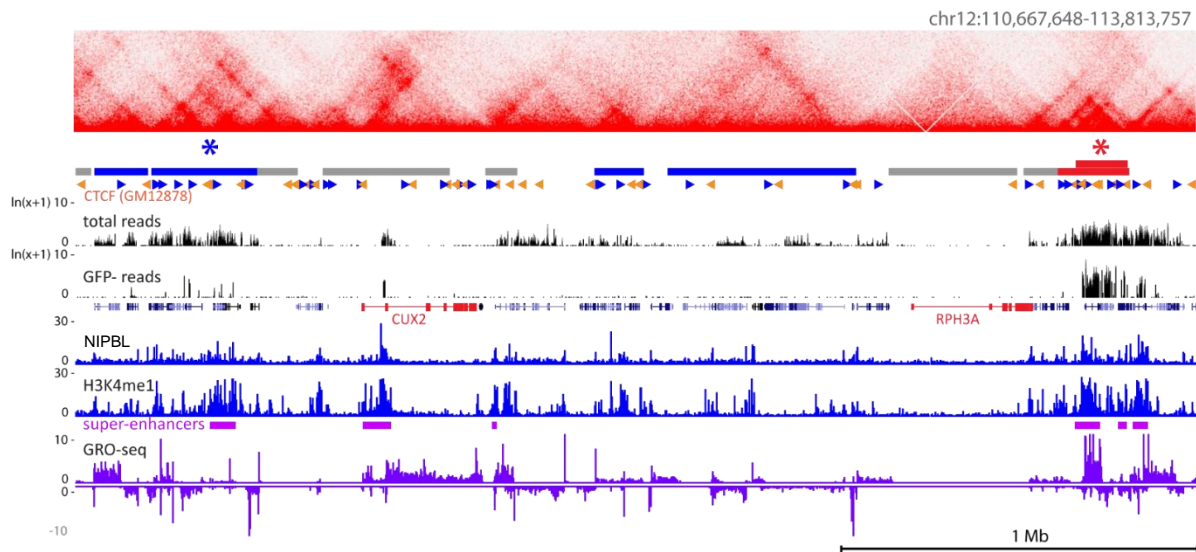


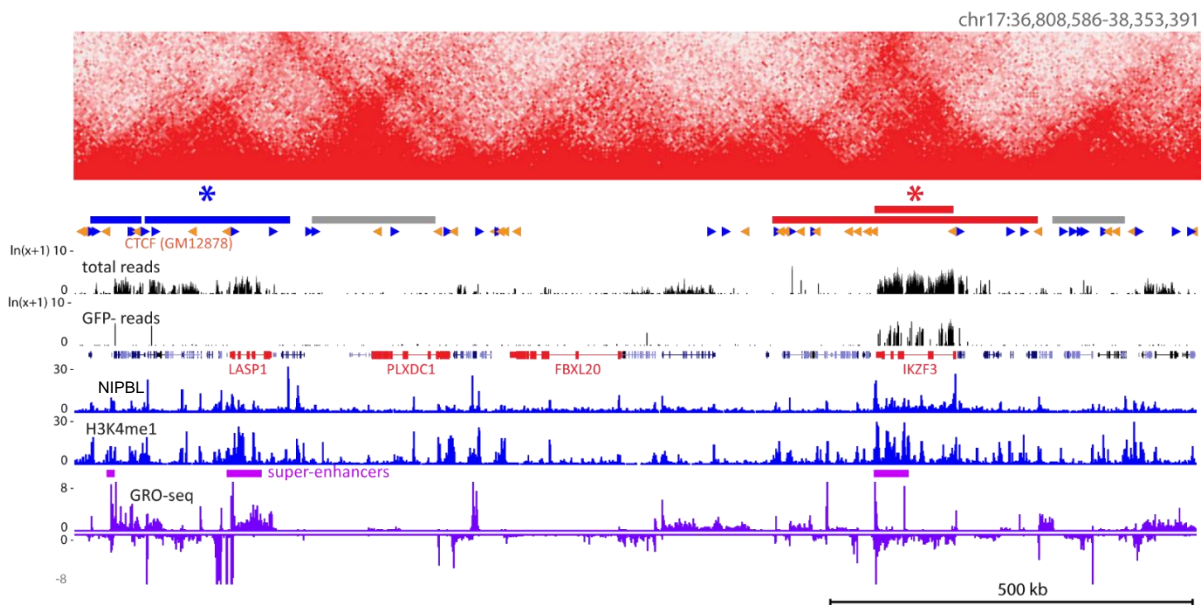
A



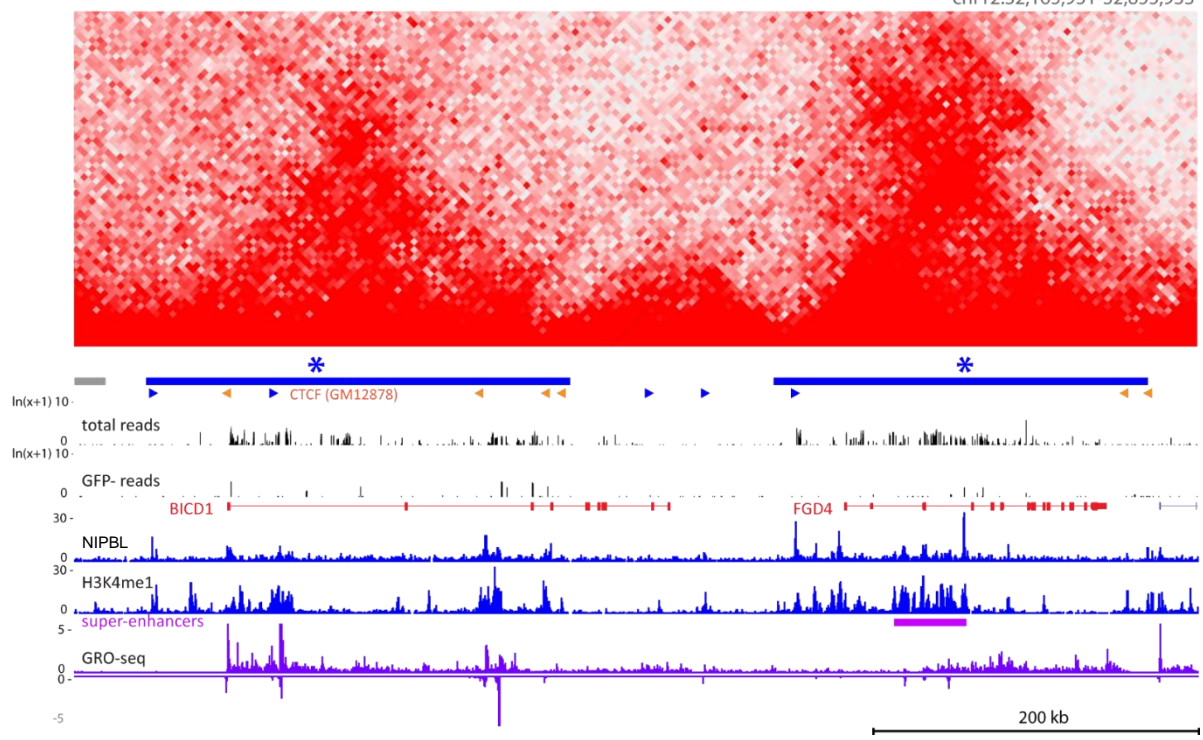
B



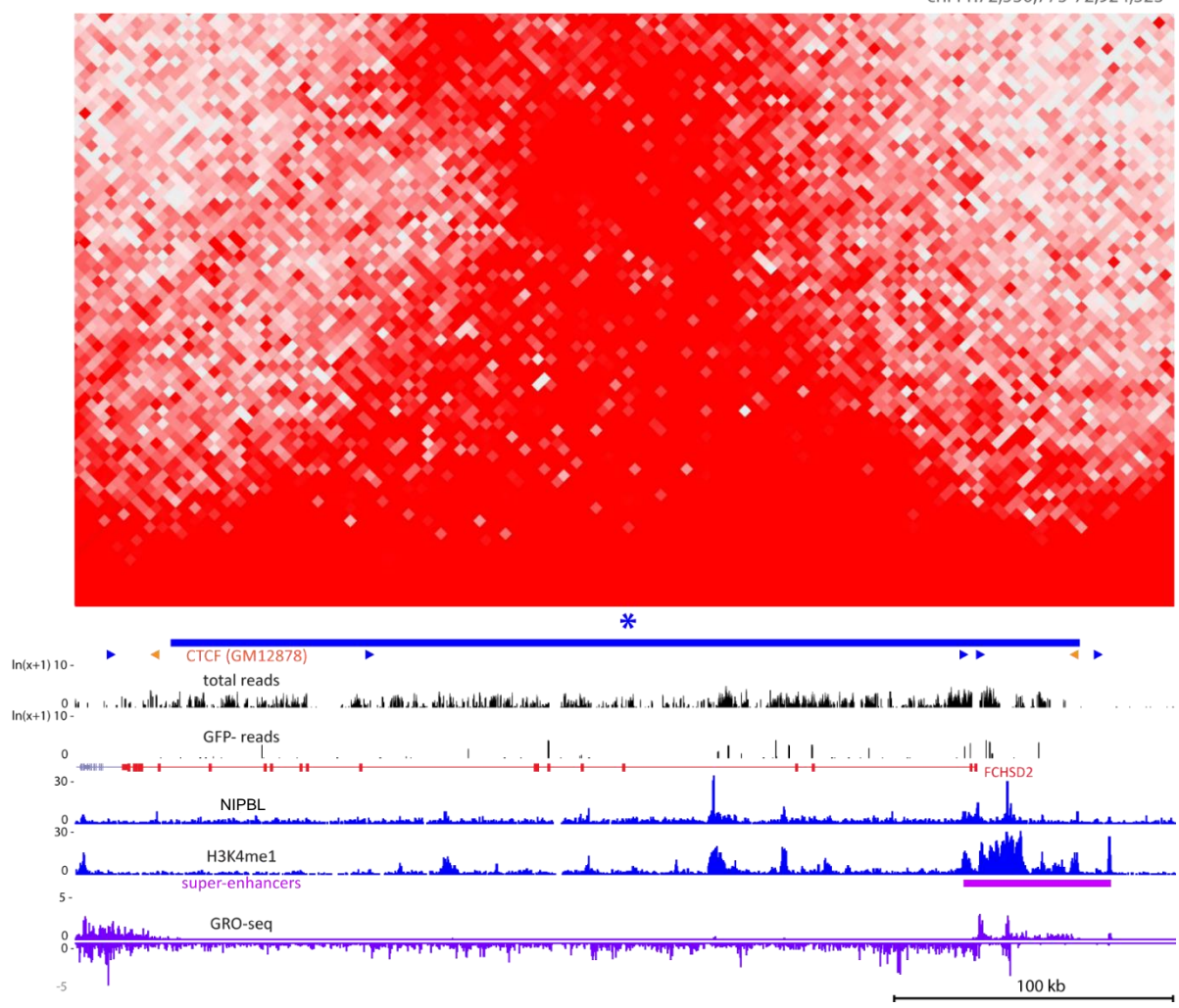
C



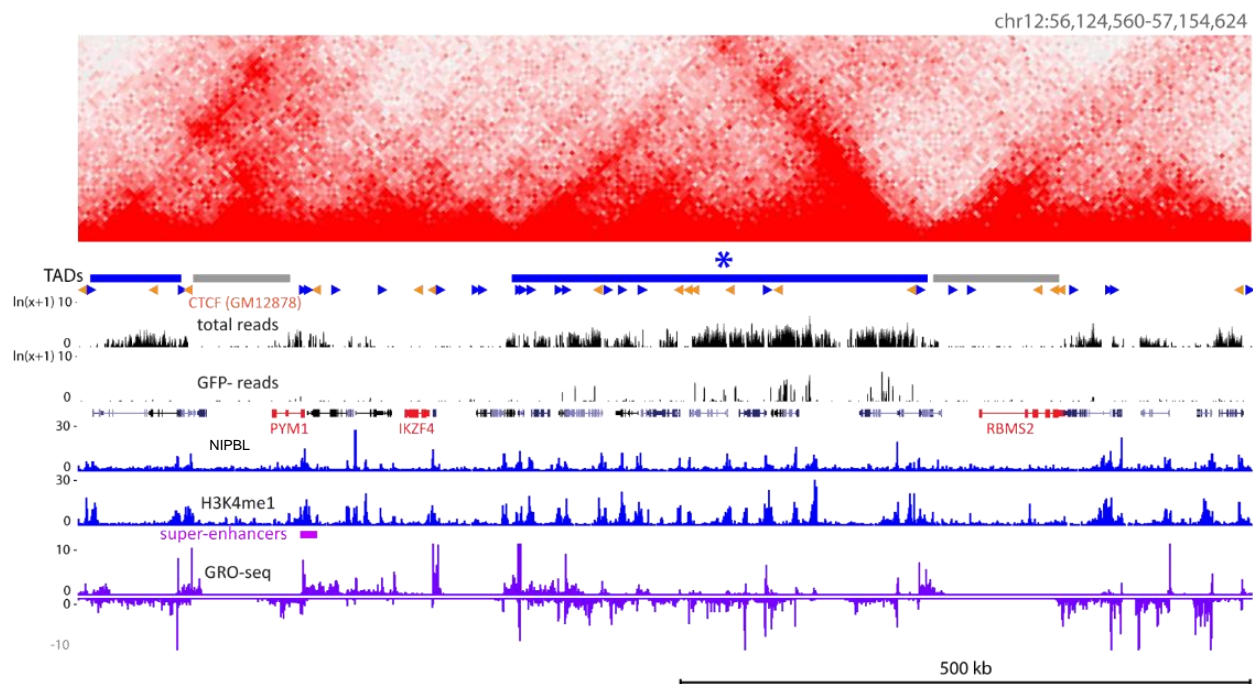
D



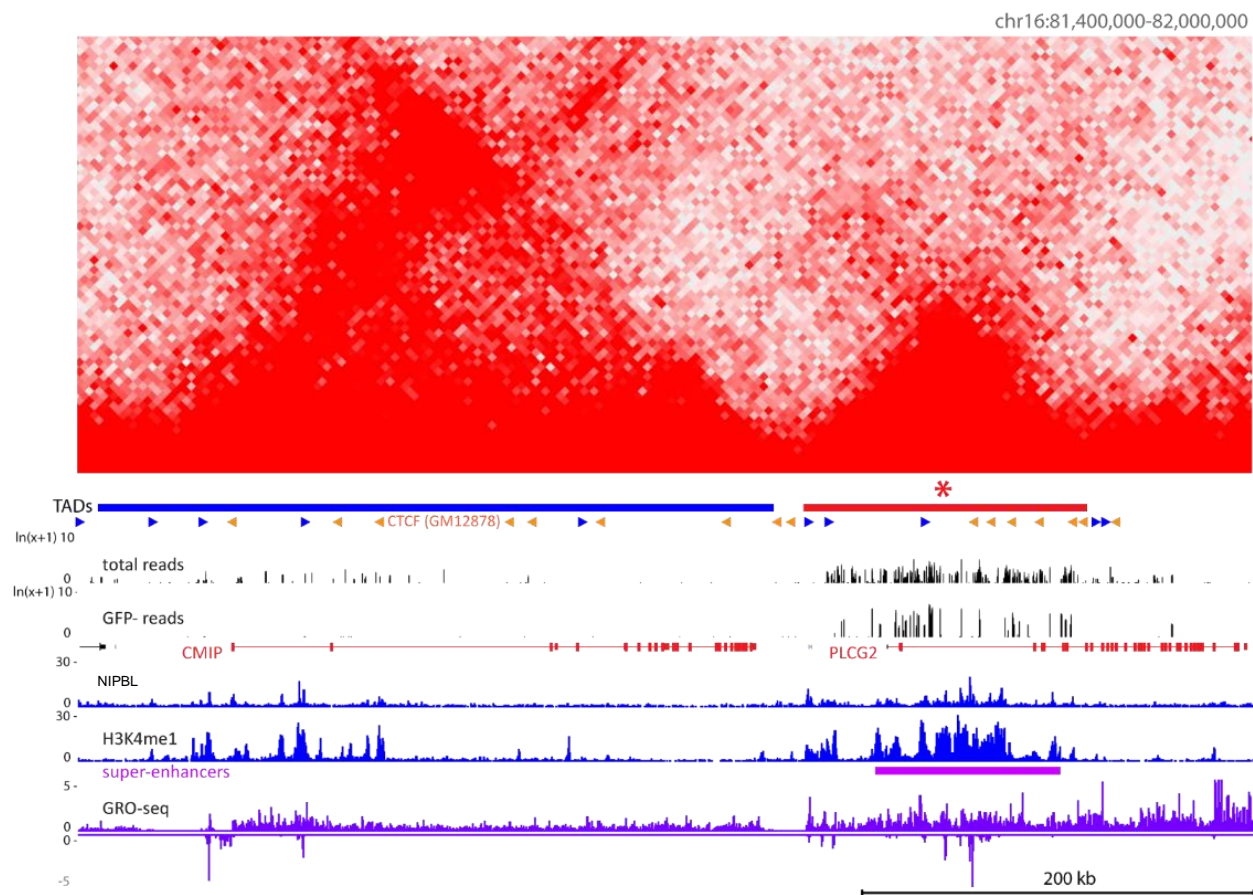
E



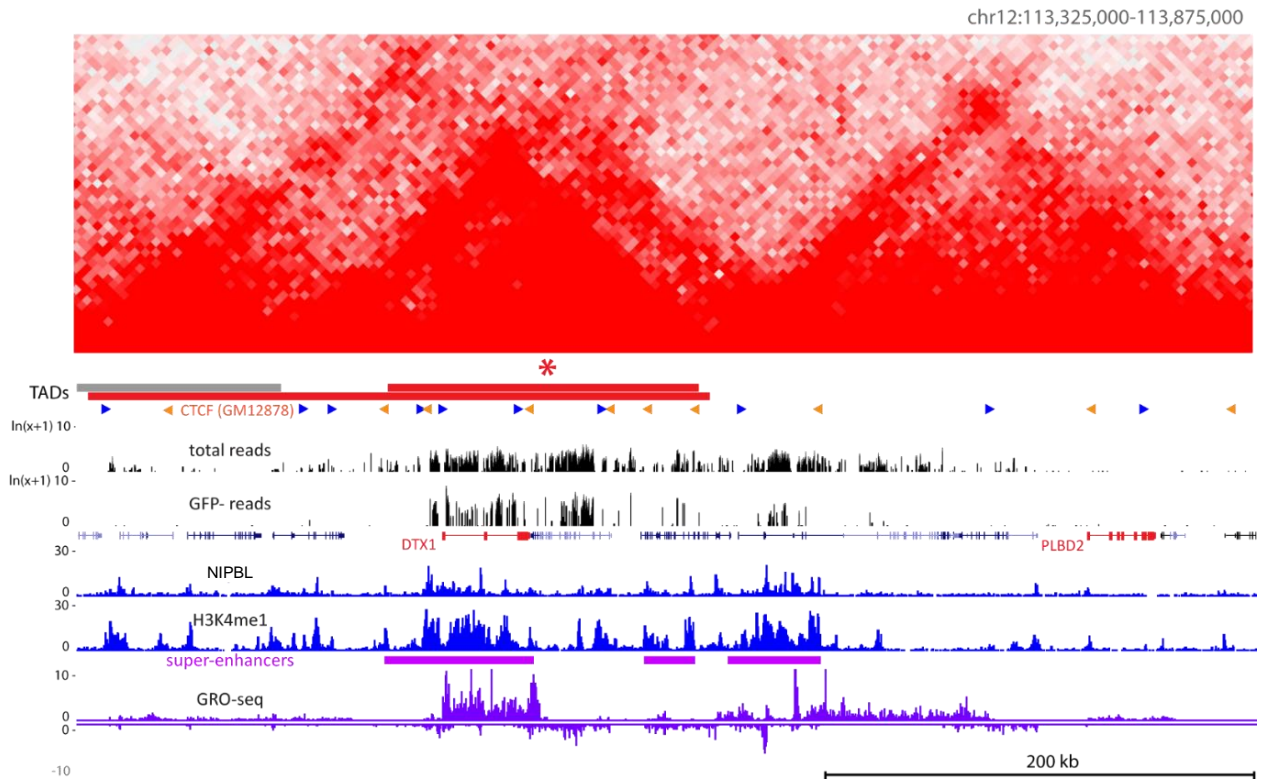
F



G



H



Data S1 - Examples of SHM-susceptible (hot) and SHM-resistant (cold) TADs *Related to Figure 3*

(A-H) Hi-C matrices are shown above DIVAC-trap HTISA data for cold (blue) and hot (red) TADs, with high confidence hot and cold TADs marked with an asterisk. CTCF motif orientations (sense, blue; antisense, orange) overlapping with CTCF ChIP-seq peaks for the GM12878 human lymphoblastic cell line are indicated, with data tracks for NIPBL, H3K4me1, super-enhancers, and GRO-seq (sense and antisense above and below the line, respectively). (A-C) Examples of hot and cold TADs close to each other. (D-F) Examples of cold regions. (G) Example of juxtaposed hot and cold TADs. (H) Example of hot region with hot TAD in which SHM-susceptibility is sharply delimited to one sub-TAD.