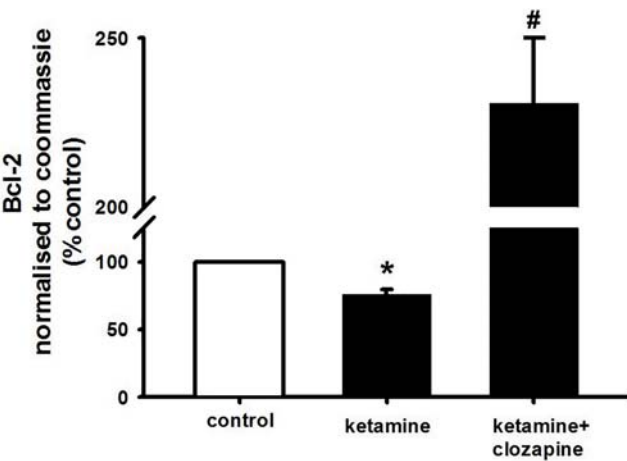
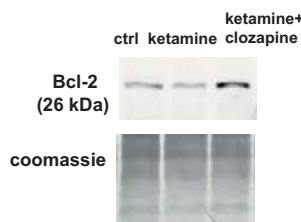
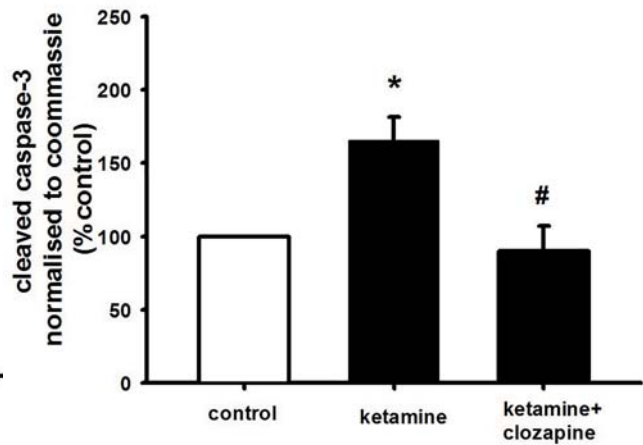
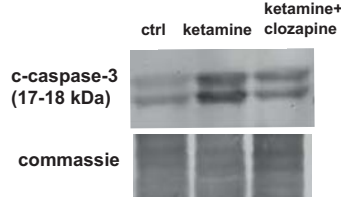


A**B**

Suppl Fig.1 Clozapine counteracts ketamine-induced cell death in correlation with decreased apoptosis. NSCs were plated as single cells. Cells were treated with 400 μ M ketamine and 10 nM clozapine for 24 hours. After 24 hours incubation cells harvested for Western blot experiments. To obtain quantitative measurements **(A)** Bcl-2 protein levels and **(B)** cleaved caspase 3 and were normalized against Coomassie blue. Data are shown as mean \pm SEM (A, n=5-6; B, n=4-5). Kruskal-Wallis followed by Dunn's test was used. Differences were considered significant at P <0.05. *denotes P <0.05 compared with control, # denotes P<0.05 compared to ketamine.