

Figure S1. Representative dynamic multiple reaction monitoring (DMRM) chromatogram of CIs.

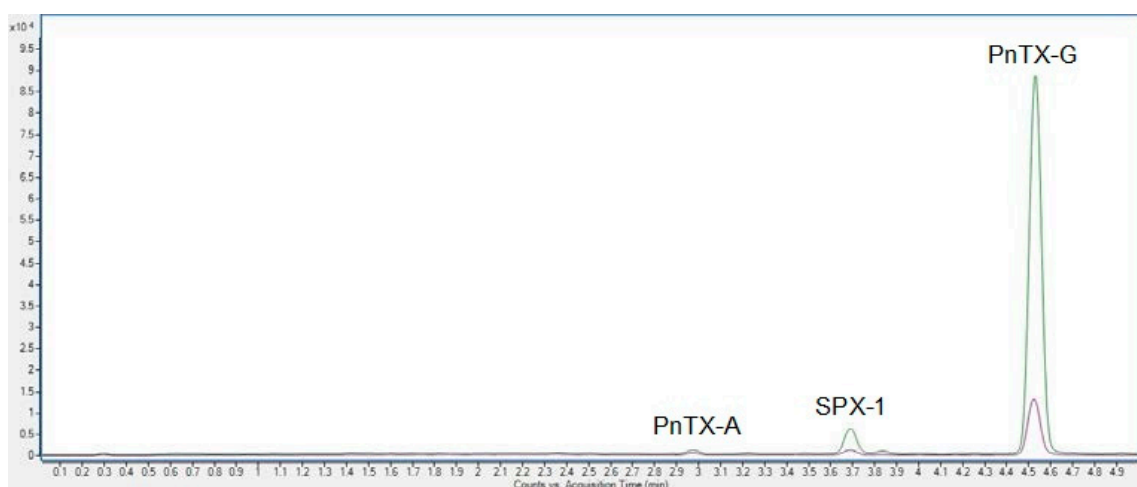


Figure S2. Overlapped total ion chromatogram (TIC) of sample RA3.4 before and after SPE.

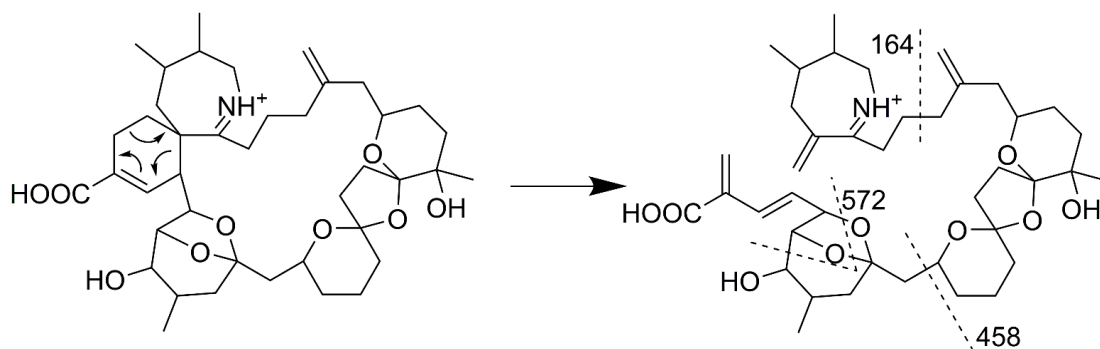


Figure S3. Structure of PnTX-A and fragment ions selected for multiple reaction monitoring (MRM) analysis.

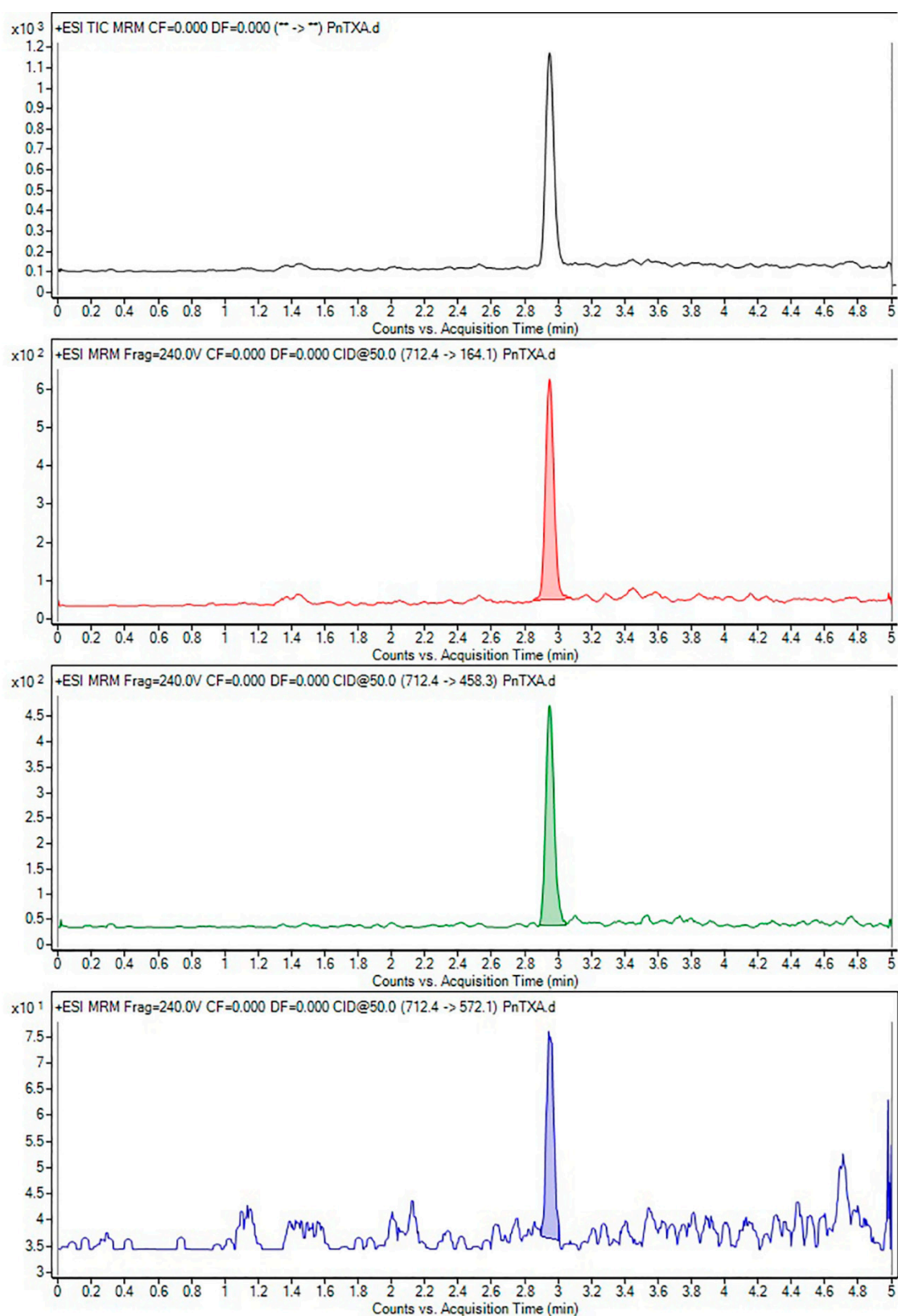


Figure S4. Multiple reaction monitoring (MRM) chromatograms for PnTX-A acquired on sample RA3.4 after SPE.