

SUPPLEMENT FIGURES

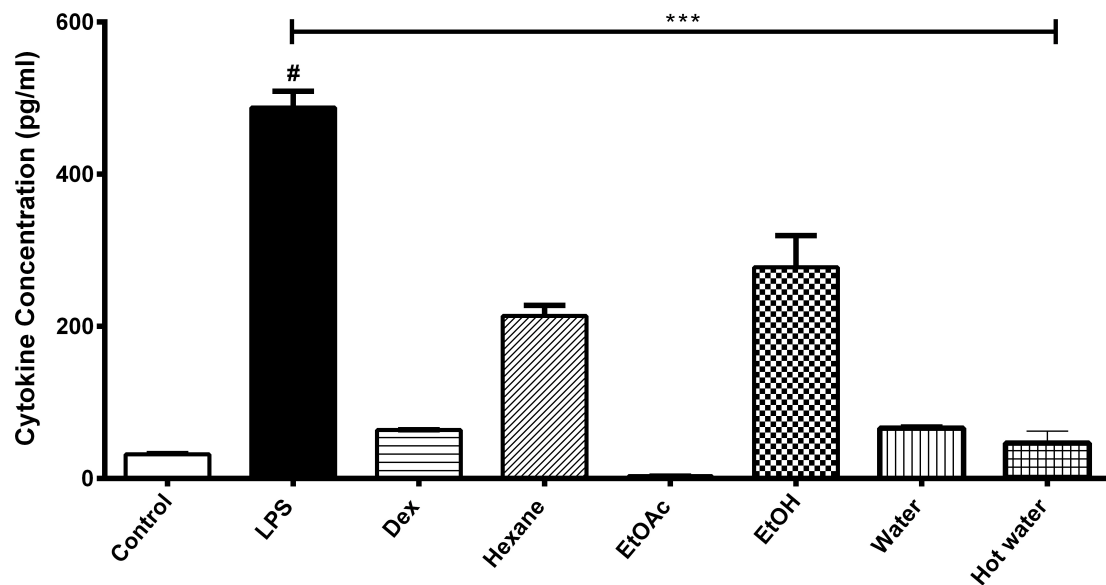


Figure S1: Effect of various MO leaves crude extracts on pro-inflammatory cytokines levels in LPS-induced MDM. Data are presented as means \pm SEM. # $p < 0.05$ compared to control, *** $p < 0.05$, compared to LPS. Control: Untreated MDM; LPS: Lipopolysaccharide-stimulated MDM; Dex: Dexamethasone; EtOAc: Crude ethyl acetate; EtOH: Crude ethanol

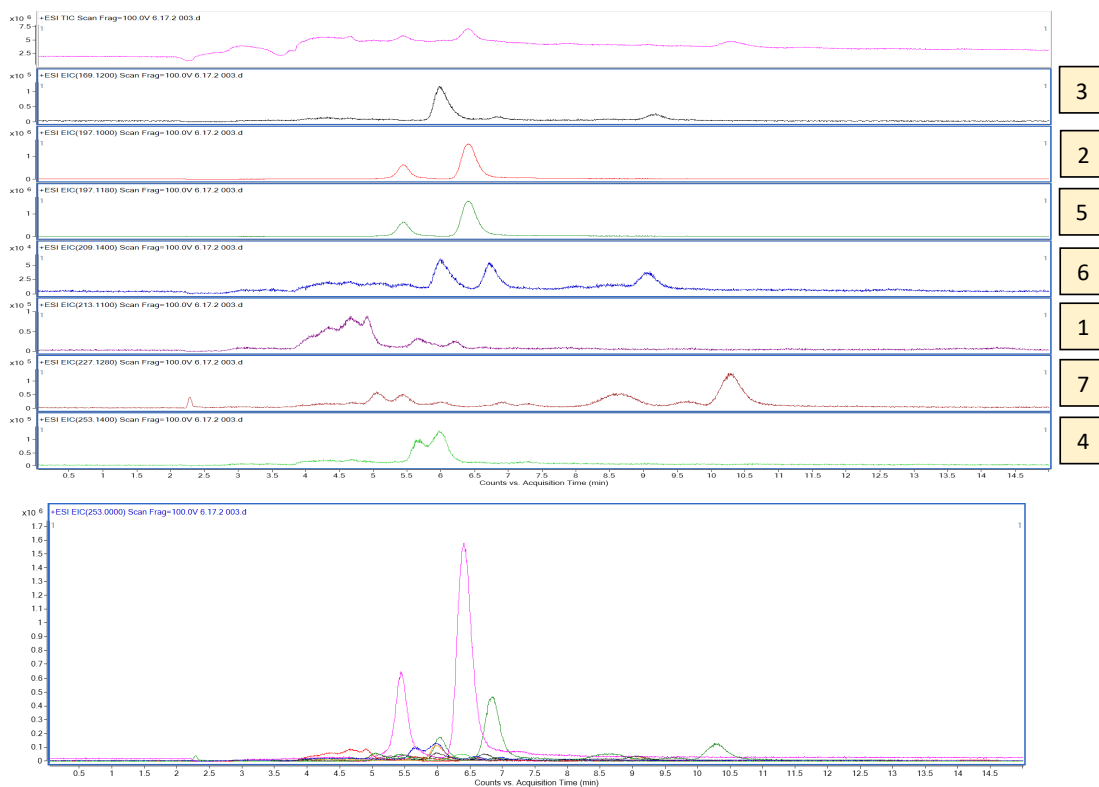


Figure S2: Overlays of LC-MS chromatograms of MO subfraction 6.17.2 with active compounds no.1-7

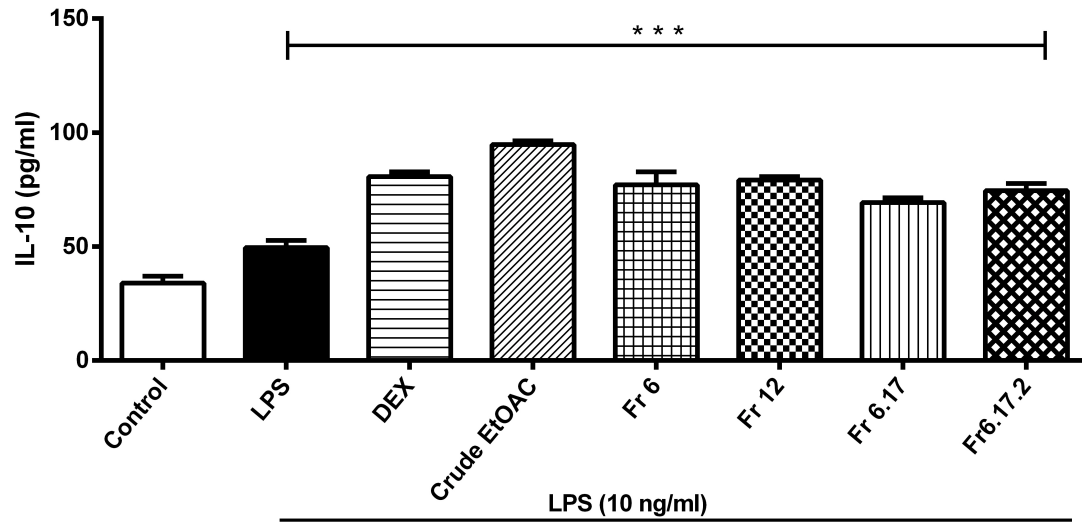


Figure S3: Effect of various MO leaves crude extracts on IL-10 anti-inflammatory cytokine level in LPS-induced MDM. Data are presented as means \pm SEM. # $p < 0.001$ compared to control, *** $p < 0.05$, compared to LPS. Control: Untreated MDM; LPS: Lipopolysaccharide-stimulated MDM; Dex: Dexamethasone; Crude EtOAc: Crude ethyl acetate; Fr: Fraction