

PNAS

www.pnas.org

Supplementary Information for

Global shape of Toll activation is determined by *wntD* enhancer properties

Neta Rahimi^{1*}, Shari Carmon^{1*}, Inna Averbukh^{1*}, Farzaneh Khajouei², Saurabh Sinha², Eyal D. Schejter¹, Naama Barkai¹ and Ben-Zion Shilo^{1&}

Ben-Zion Shilo
Email: benny.shilo@weizmann.ac.il

This PDF file includes:

Figures S1

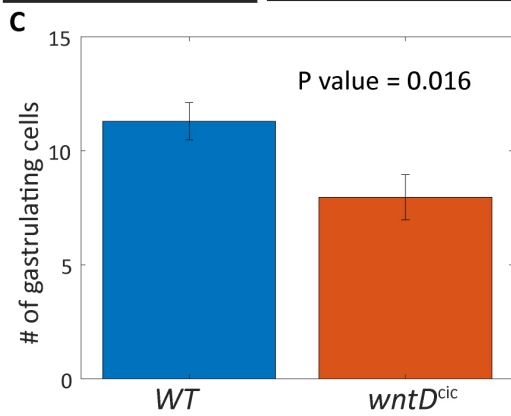
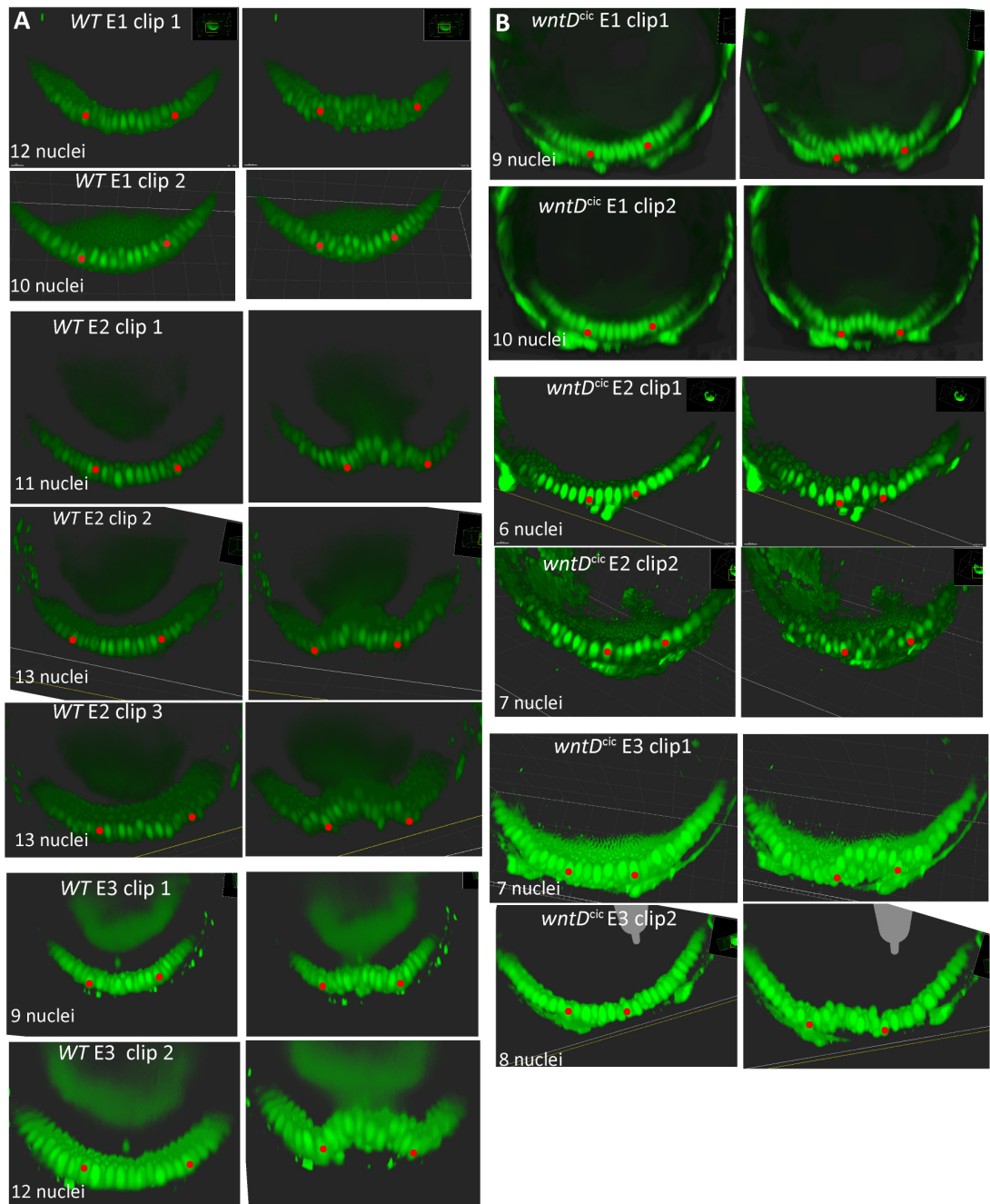


Fig. S1.

Expanded *wntD* expression leads to reduction of cells undergoing ventral furrowing. (A,B) Analysis and comparison of the number of cells undergoing ventral furrowing, monitored by live imaging of Dorsal-GFP (green), which localizes to ventral nuclei, in *wt* and *wntD^{cic/+}* embryos. Nuclei at the lateral edges of the ventral furrow (red) served as guideposts for the extent of the gastrulating domain. Section at several planes along the anterior-posterior axis are shown for each embryo. (C) The number of cells undergoing ventral furrowing for each embryo is the average of these sections. The average number of cells for three embryos of each genotype shows a smaller number of such cells, that is statistically significant, for the *wntD^{cic/+}* embryos.