

# Prognostic impact of PD-L1 expression in correlation with neutrophil-to-lymphocyte ratio in squamous cell carcinoma of the lung

Yuko Tashima\*, Taiji Kuwata\*, Kazue Yoneda, Ayako Hirai, Masataka Mori, Masatoshi Kanayama, Naoko Imanishi, Koji Kuroda, Yoshinobu Ichiki, Fumihiko Tanaka

Second Department of Surgery (Chest Surgery), University of Occupational and Environmental Health, Kitakyushu, Japan

\*The two authors equally contributed to the study

# Legends of supplementary figures

## Figure S.1

Recurrence-free survival (PFS) and overall survival (OS) curves according to tumor proportion score (TPS) at each cut-off (5, 10, 50) for tumoral PD-L1 expression status.

## Figure S.2a

Recurrence-free survival (PFS) and overall survival (OS) curves according to tumor proportion score (TPS) at each cut-off (5, 10, 50) for tumoral PD-L1 expression status among patients with low neutrophil-to-lymphocyte ratio (NLR, less than 2.2)

## Figure S.2b

Recurrence-free survival (PFS) and overall survival (OS) curves according to tumor proportion score (TPS) at each cut-off (5, 10, 50) for tumoral PD-L1 expression status among patients with high neutrophil-to-lymphocyte ratio (NLR, 2.2 or higher)

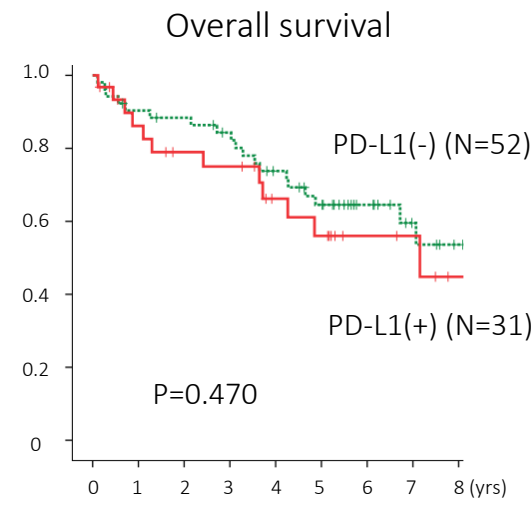
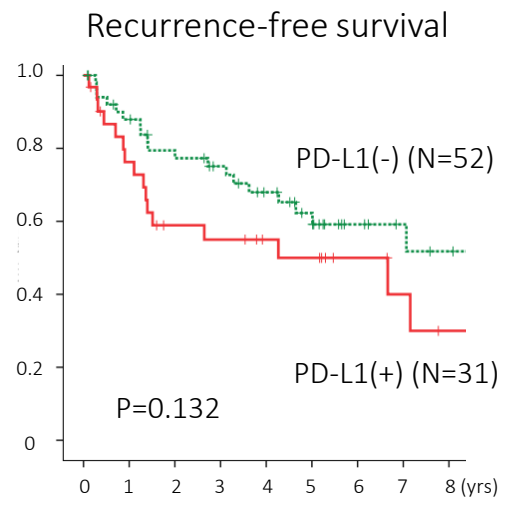
## Figure S.3

Recurrence-free survival (PFS) and overall survival (OS) curves according to tumor proportion score (TPS) at each cut-off (5, 10, 50) for tumoral PD-L1 expression status in combination with status of neutrophil-to-lymphocyte ratio (NLR).

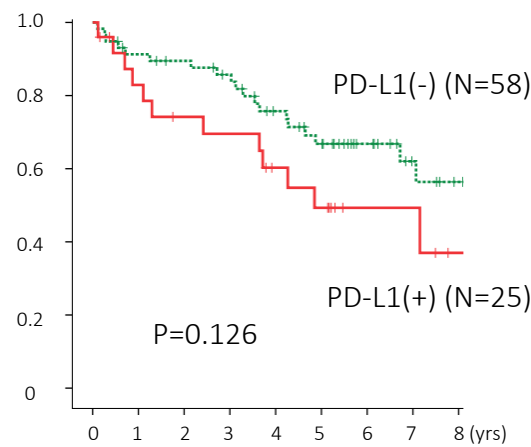
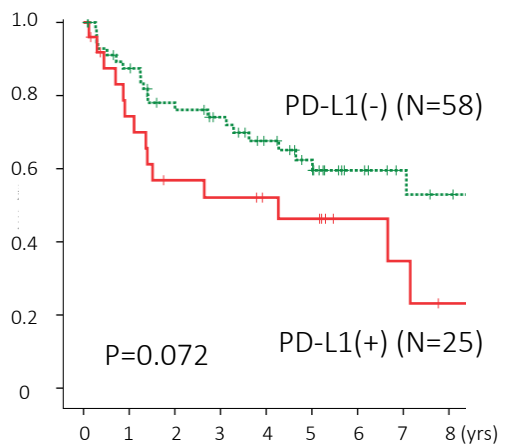
Figure S.1

PD-L1 status

TPS, 0-4 vs  $\geq 5$



TPS, 0-9 vs  $\geq 10$



TPS, 0-49 vs  $\geq 50$

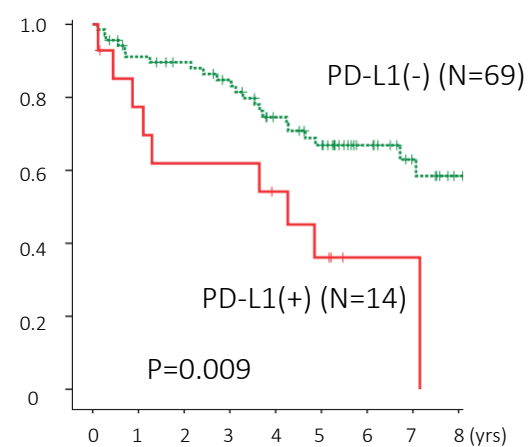
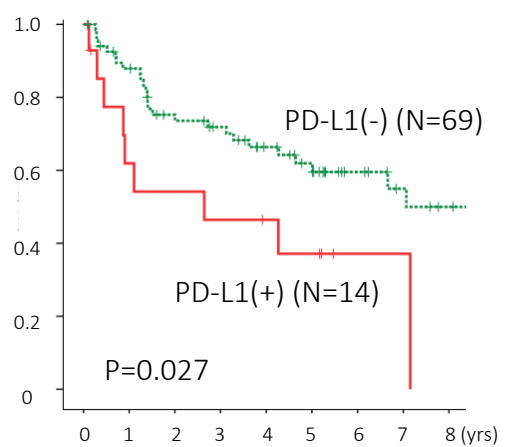
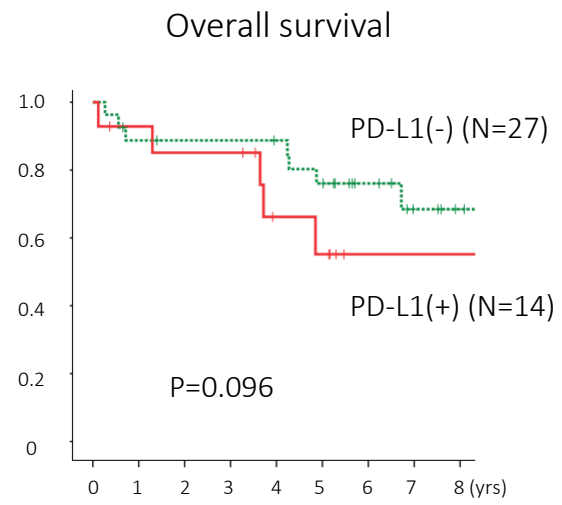
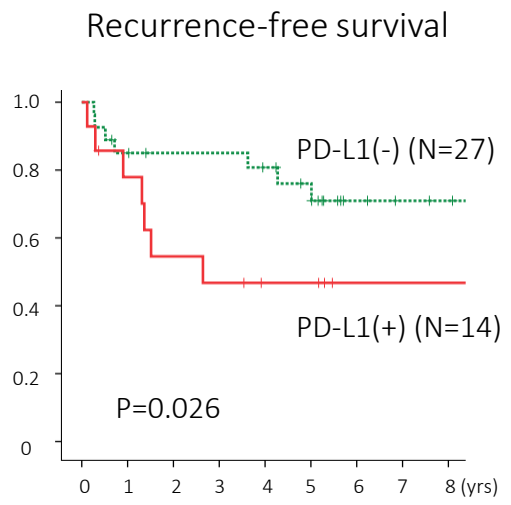


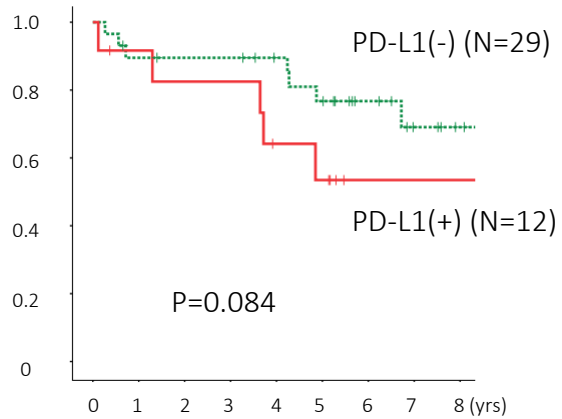
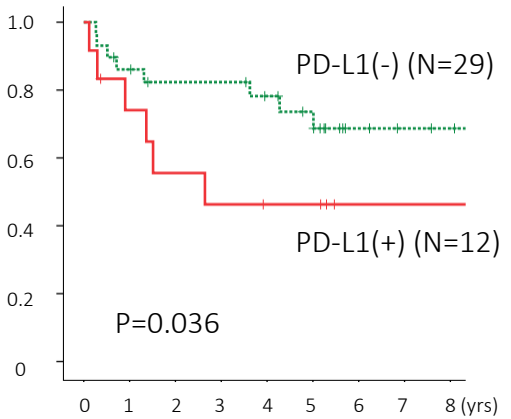
Figure S.2a

PD-L1 status

TPS, 0-4 vs  $\geq 5$



TPS, 0-9 vs  $\geq 10$



TPS, 0-49 vs  $\geq 50$

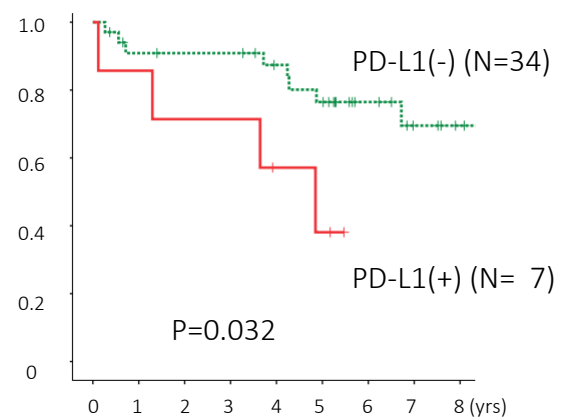
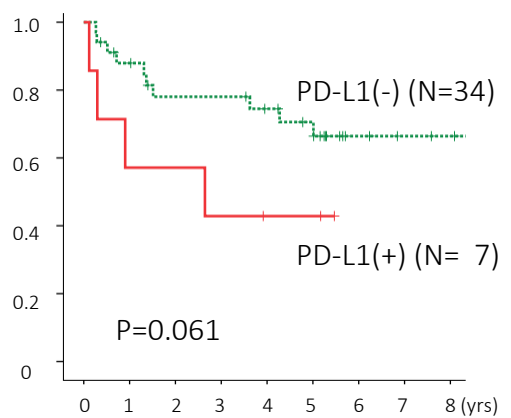
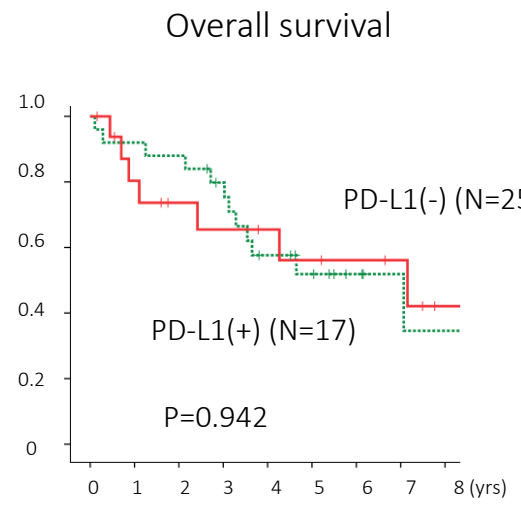
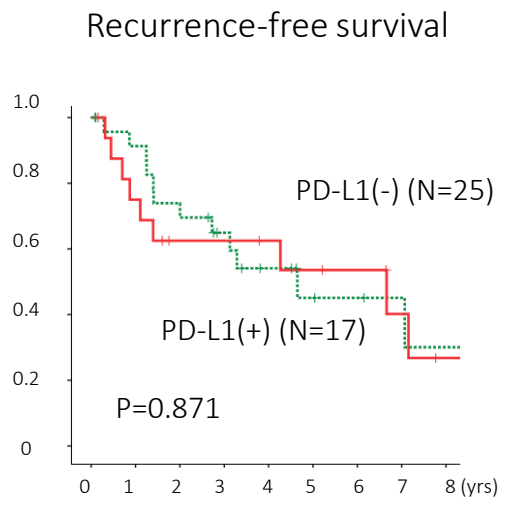


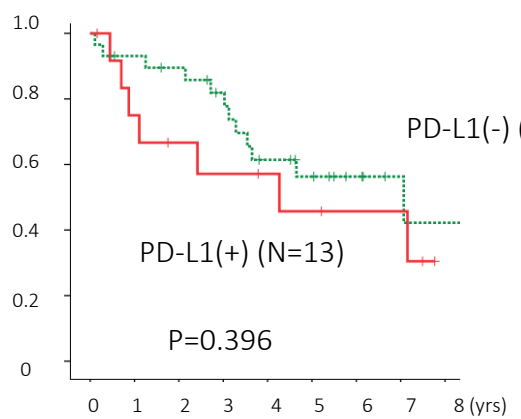
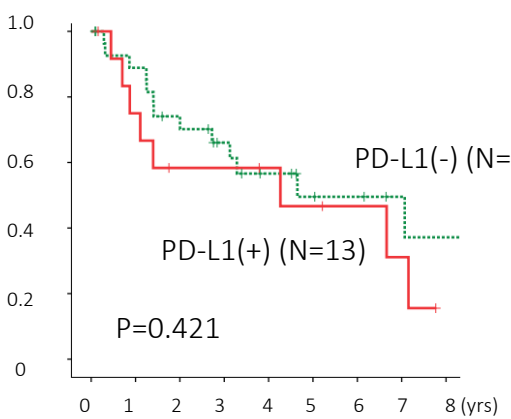
Figure S.2b

PD-L1 status

TPS, 0-4 vs  $\geq 5$



TPS, 0-9 vs  $\geq 10$



TPS, 0-49 vs  $\geq 50$

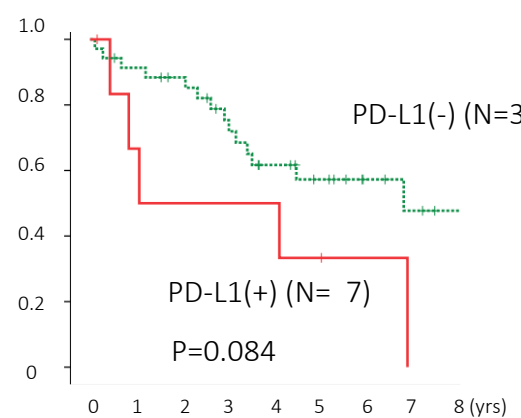
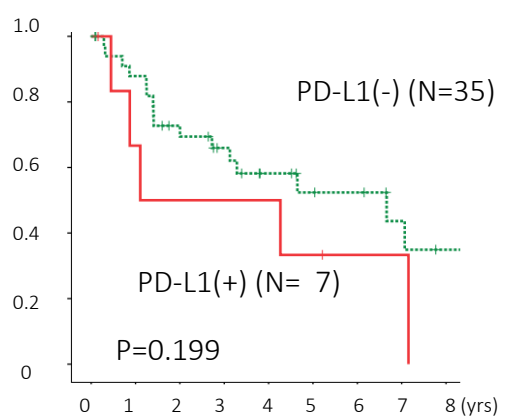
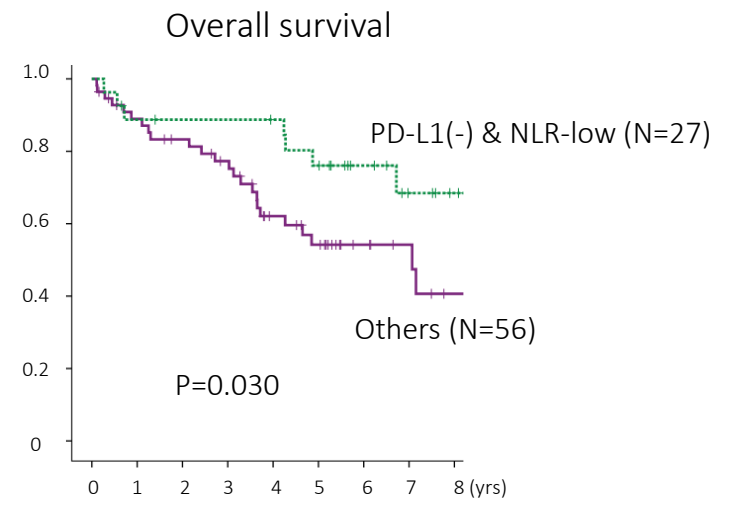
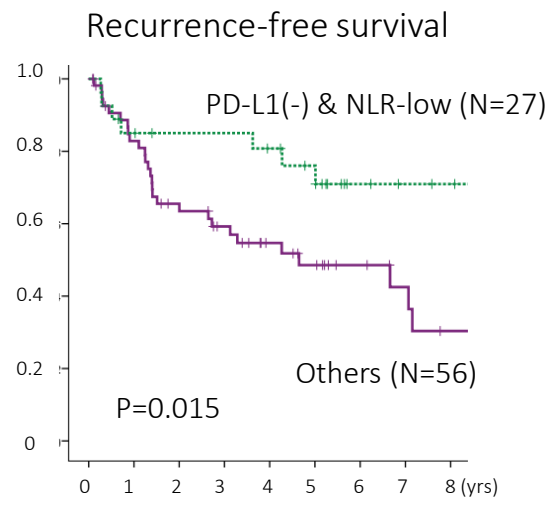
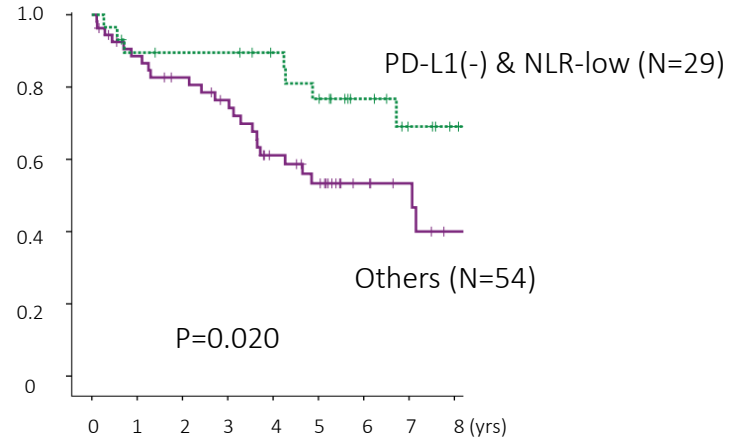
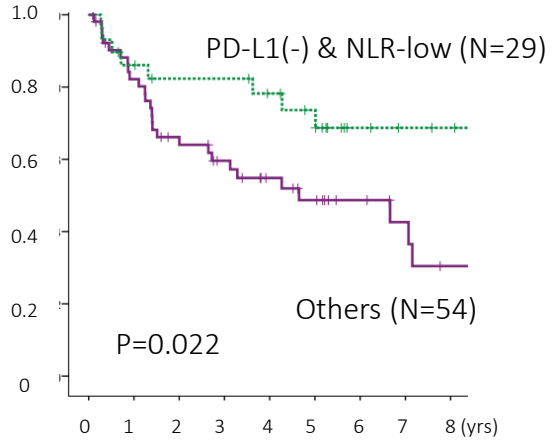


Figure S.3

PD-L1(-) (TPS, 0-4) & NLR-low vs Others



PD-L1(-) (TPS, 0-9) & NLR-low vs Others



PD-L1(-) (TPS, 0-49) & NLR-low vs Others

