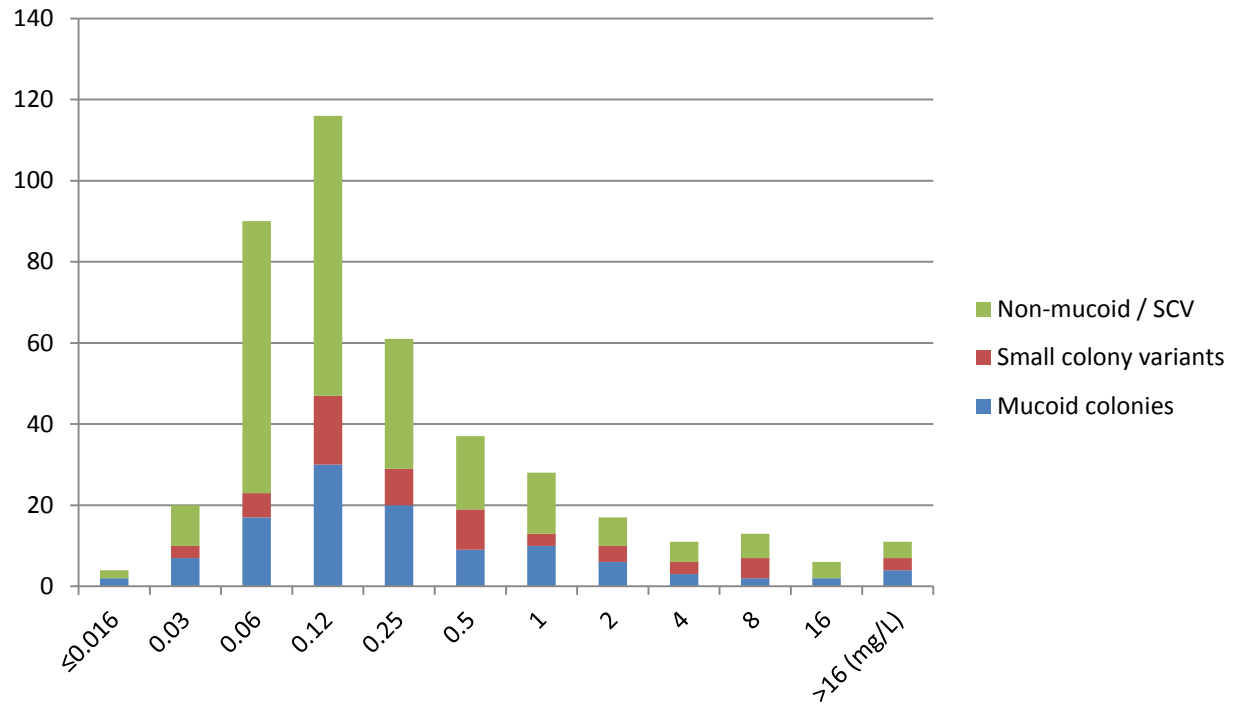
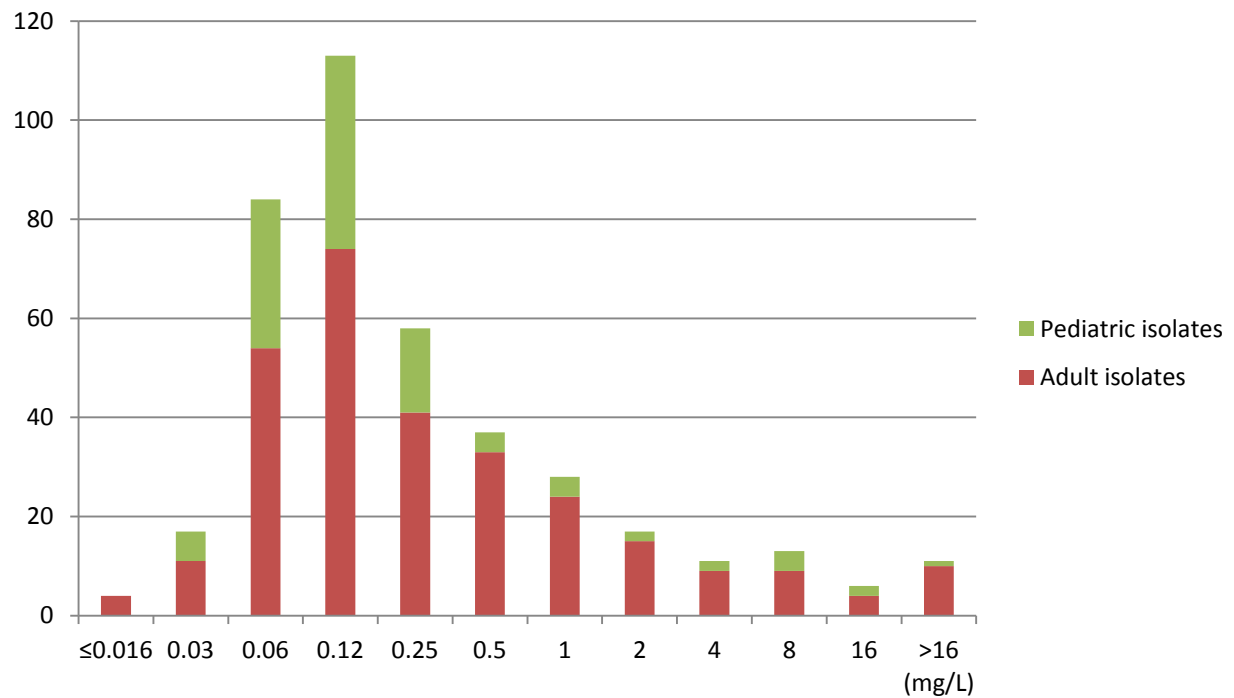


Supplemental figure S1A: Minimal inhibitory concentration of murepavadin against *Pseudomonas aeruginosa* isolates from cystic fibrosis patients, by morphotype.



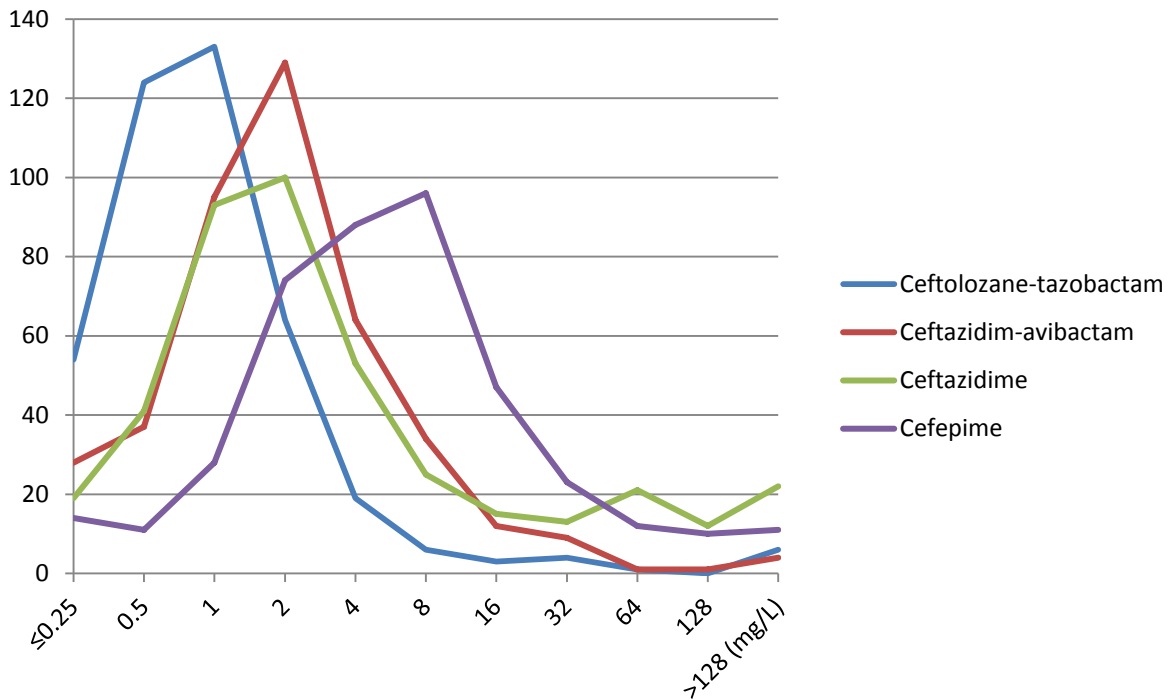
Minimal inhibitory concentration (MIC) in mg/L of 414 *Pseudomonas aeruginosa* isolates from cystic fibrosis patients, stacked by morphotype. The Y-axis depicts the number of strains.

Supplemental figure S1B: Minimal inhibitory concentration of murepavadin against *Pseudomonas aeruginosa* isolates from cystic fibrosis patients, by age group.



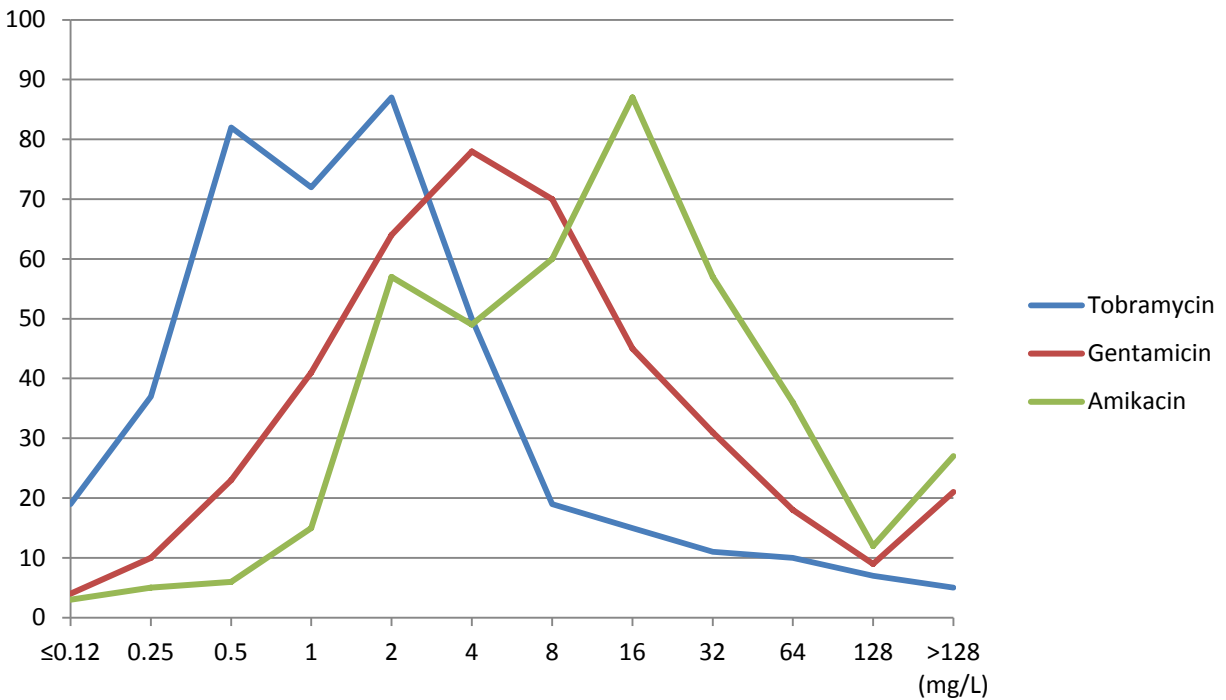
Minimal inhibitory concentration (MIC) in mg/L of 399 *Pseudomonas aeruginosa* isolates from cystic fibrosis patients for whom age group was available, stacked by age group (pediatric: younger than 18 years old; adult: over 18 years old). The Y-axis depicts the number of strains.

Supplemental figure S2: Minimal inhibitory concentration of cephalosporins and cephalosporin / betalactamase-inhibitor combinations against *Pseudomonas aeruginosa* isolates from cystic fibrosis patients.



Minimal inhibitory concentration (MIC) in mg/L of 414 *Pseudomonas aeruginosa* isolates from cystic fibrosis patients, comparing the activity of different cephalosporins and cephalosporin / betalactamase-inhibitor combinations . The Y-axis depicts the number of strains.

Supplemental figure S3: Minimal inhibitory concentration of aminoglycosides against *Pseudomonas aeruginosa* isolates from cystic fibrosis patients.

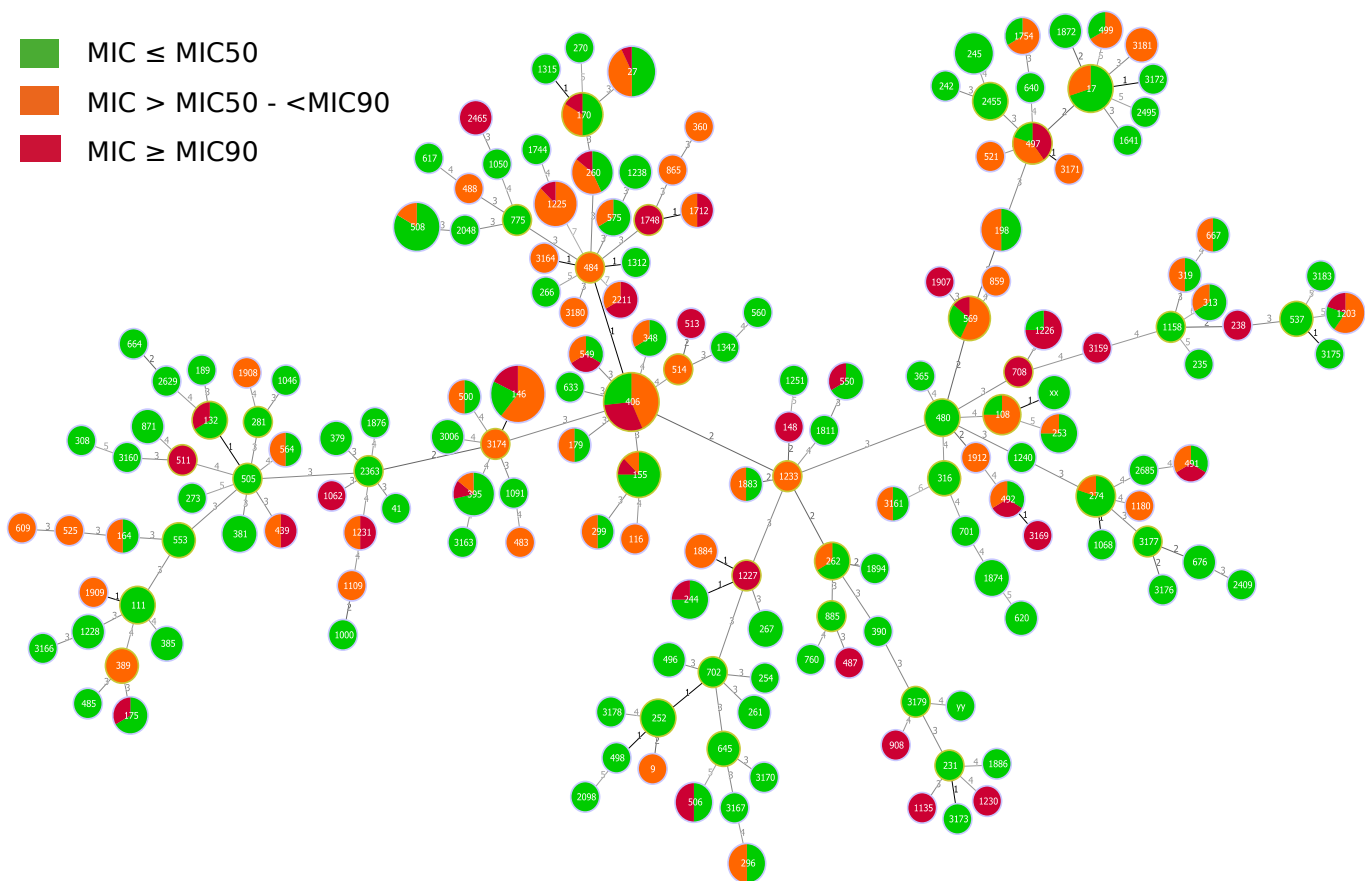


Minimal inhibitory concentration (MIC) in mg/L of 414 *Pseudomonas aeruginosa* isolates from cystic fibrosis patients, comparing the activity of different aminoglycosides. The Y-axis depicts the number of strains.

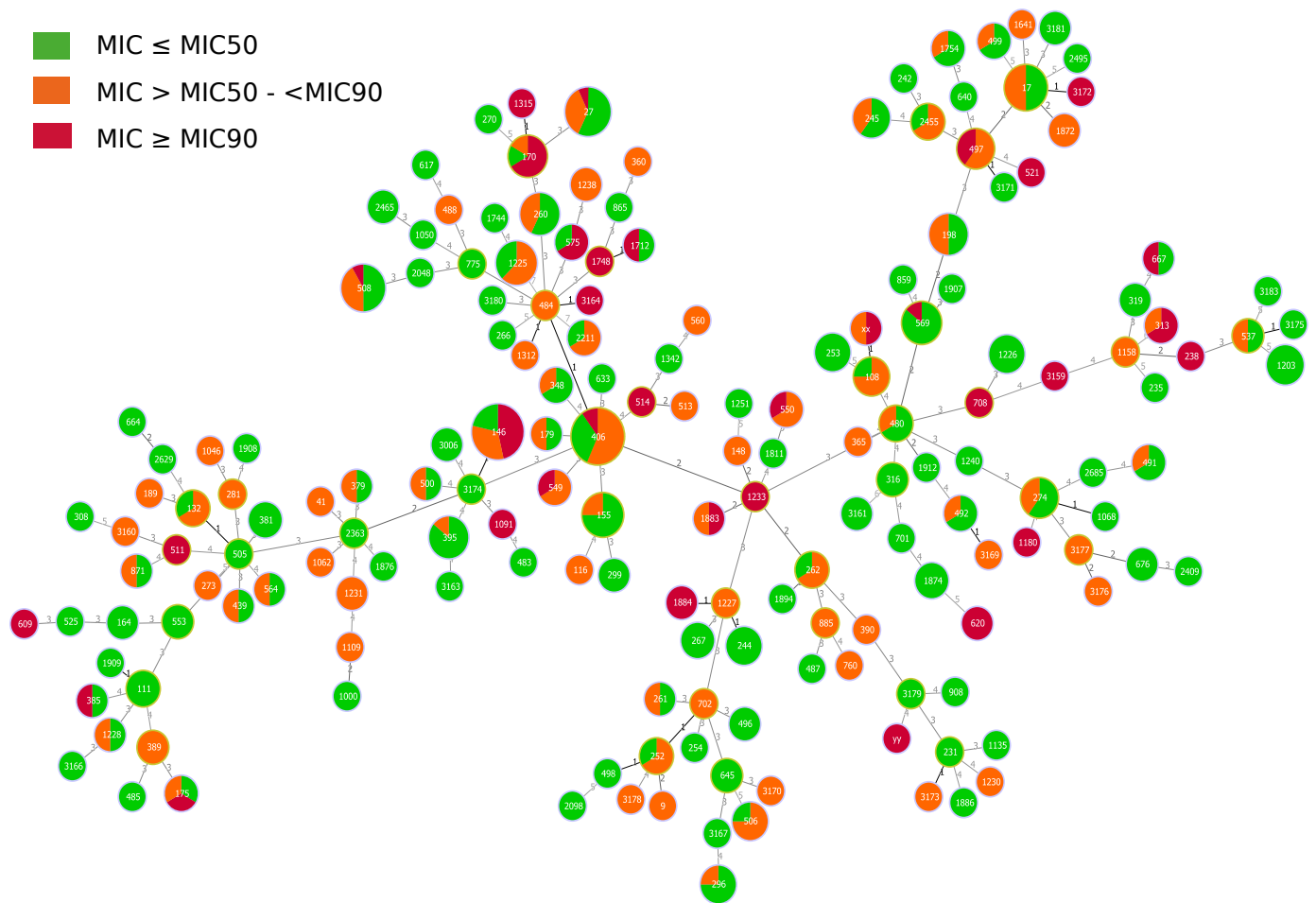
Supplemental Figure 4 A-N: Sequence type distribution of *Pseudomonas aeruginosa* strains isolated from persons with cystic fibrosis with depiction of relative antimicrobial susceptibility.

Legend: Minimum spanning tree of 412 *Pseudomonas aeruginosa* respiratory isolates from cystic fibrosis patients, indicating the distribution of isolates over minimal inhibitory concentrations (MICs), compared to the MIC₅₀ and MIC₉₀ of the collection, for murepavadin (A), cefepime (B), ceftazidime (C), ceftazidime-avibactam (D), ceftolozane-tazobactam (E), piperacillin-tazobactam (F), meropenem (G), imipenem (H), aztreonam (I), ciprofloxacin (J), gentamicin (K), tobramycin (L), amikacin (M) and colistin (N). Sequence types (STs) based on seven housekeeping genes as determined by whole genome sequencing. The numbers in the circles indicate the STs assigned by PubMLST (www.pubmlst.org). Xx and xy are isolates with partially deleted housekeeping genes which could not be assigned an ST. The circle size indicates the number of isolates with the same ST. The numbers on the lines between the circles indicate the number of allele differences between two STs.

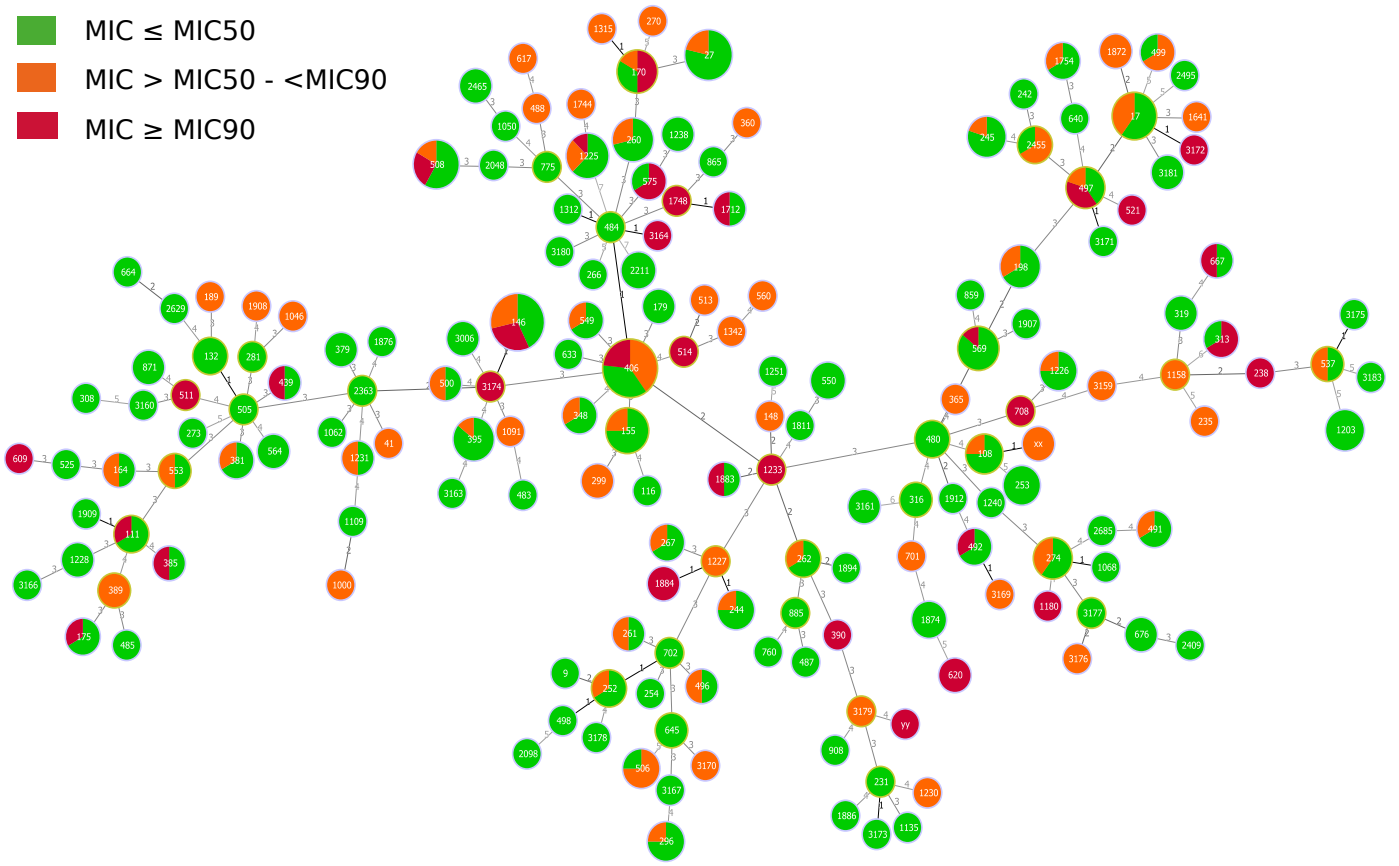
Graphical differences between the figures in the representation of the trees are the result of the software calculating and drawing a new minimum spanning tree for each figure, after input of the susceptibility categories. This may lead to different placements on the page, rotations and inversions. Occasionally the program may choose a different connection between strains when two options are equivalent.



Supplemental figure 4A: MIC distribution of murepavadin

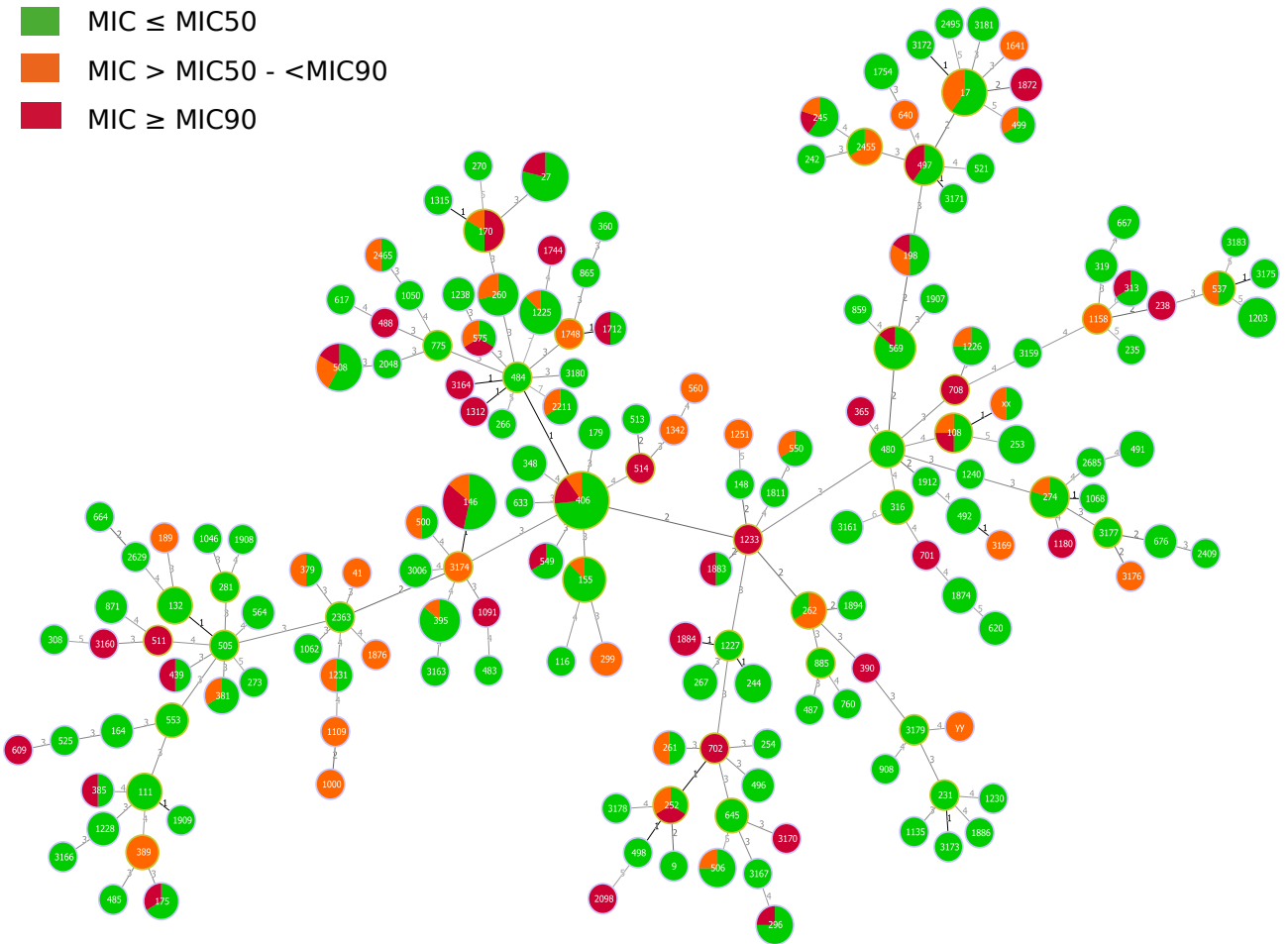


Supplemental figure 4B: MIC distribution of cefepime



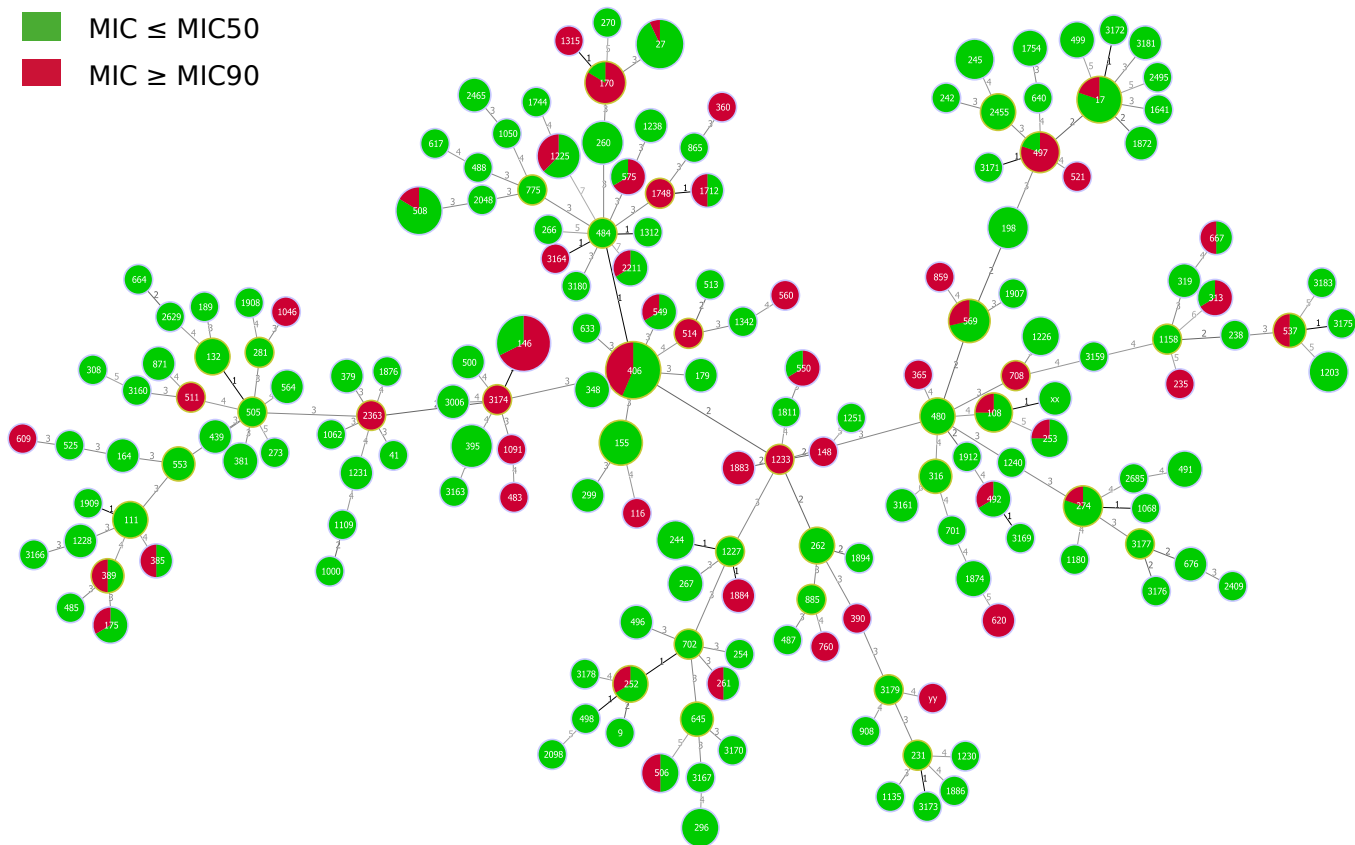
Supplemental figure 4C: MIC distribution of ceftazidime

- MIC \leq MIC50
- MIC $>$ MIC50 - $<$ MIC90
- MIC \geq MIC90

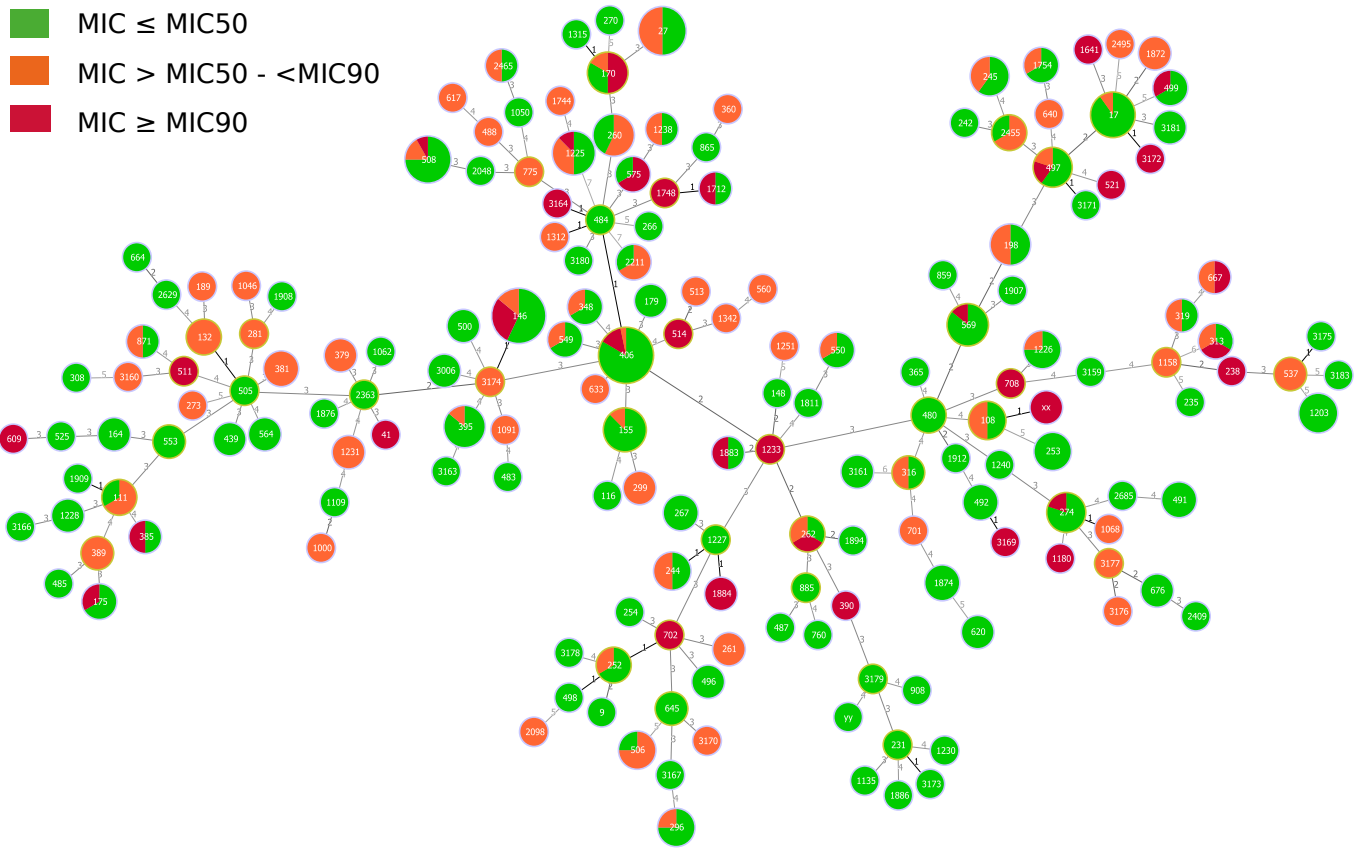


Supplemental figure 4D: MIC distribution of ceftazidime-avibactam

■ MIC ≤ MIC50
■ MIC ≥ MIC90

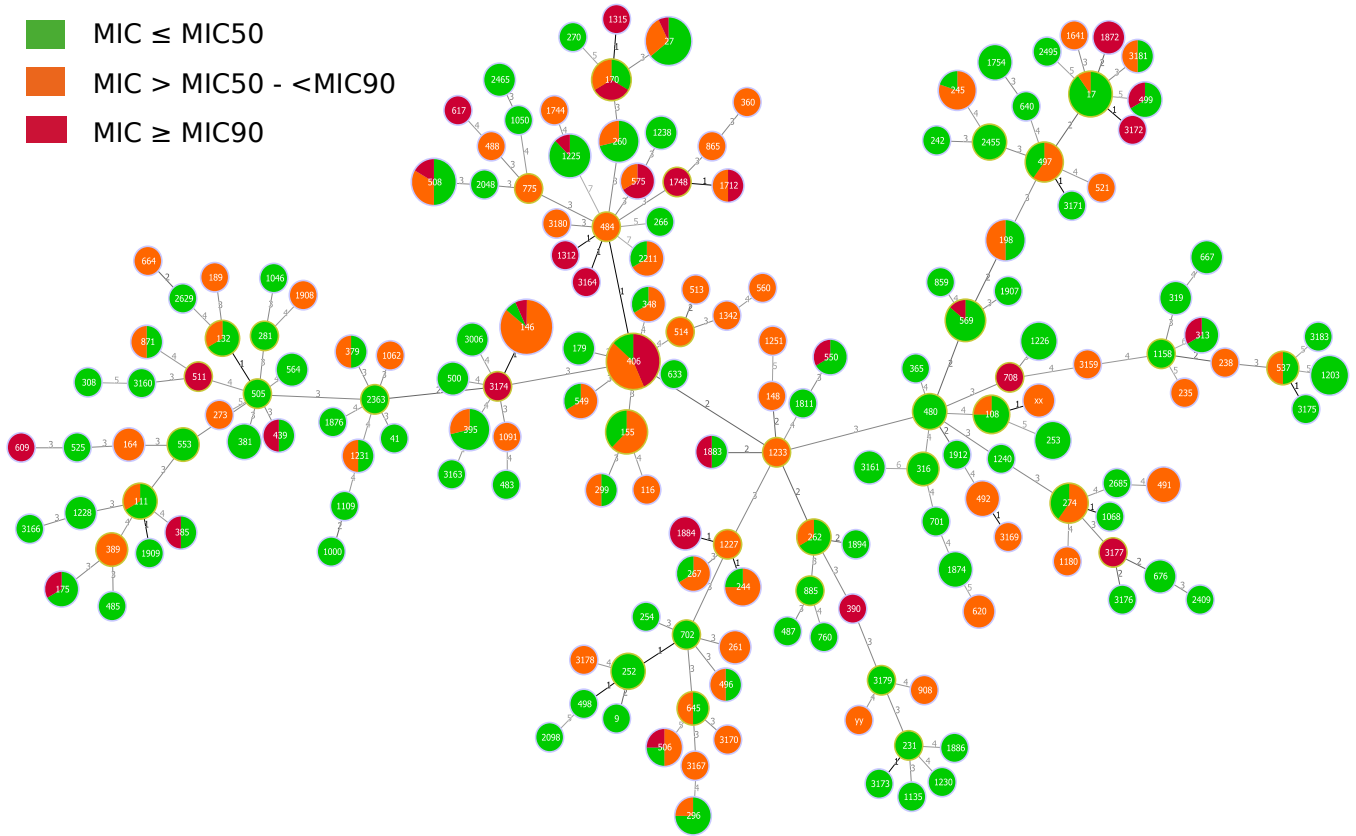


Supplemental figure 4E: MIC distribution of ceftolozane-tazobactam



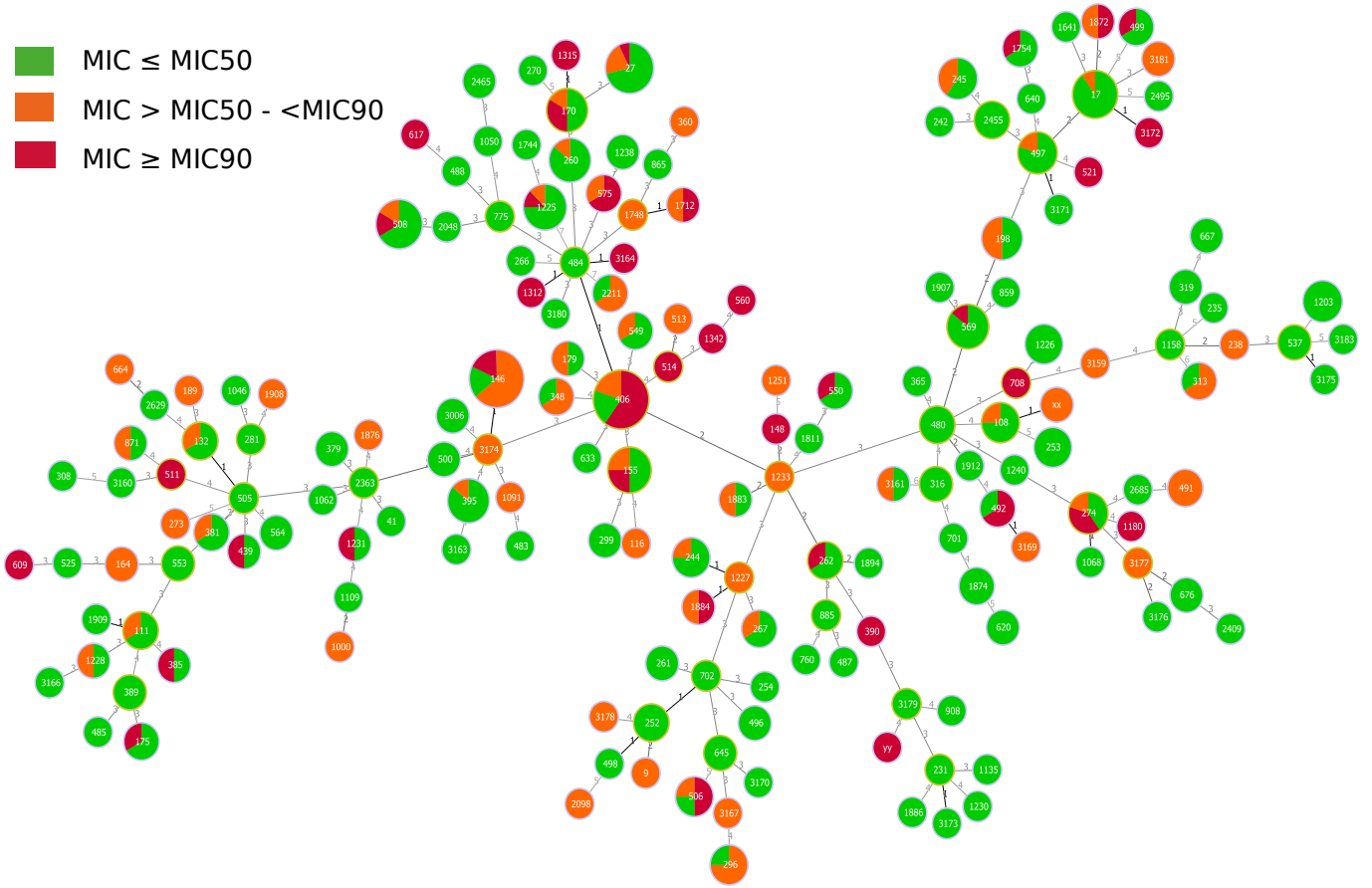
Supplemental figure 4F: MIC distribution of piperacillin-tazobactam

- MIC \leq MIC50
- MIC $>$ MIC50 - $<$ MIC90
- MIC \geq MIC90



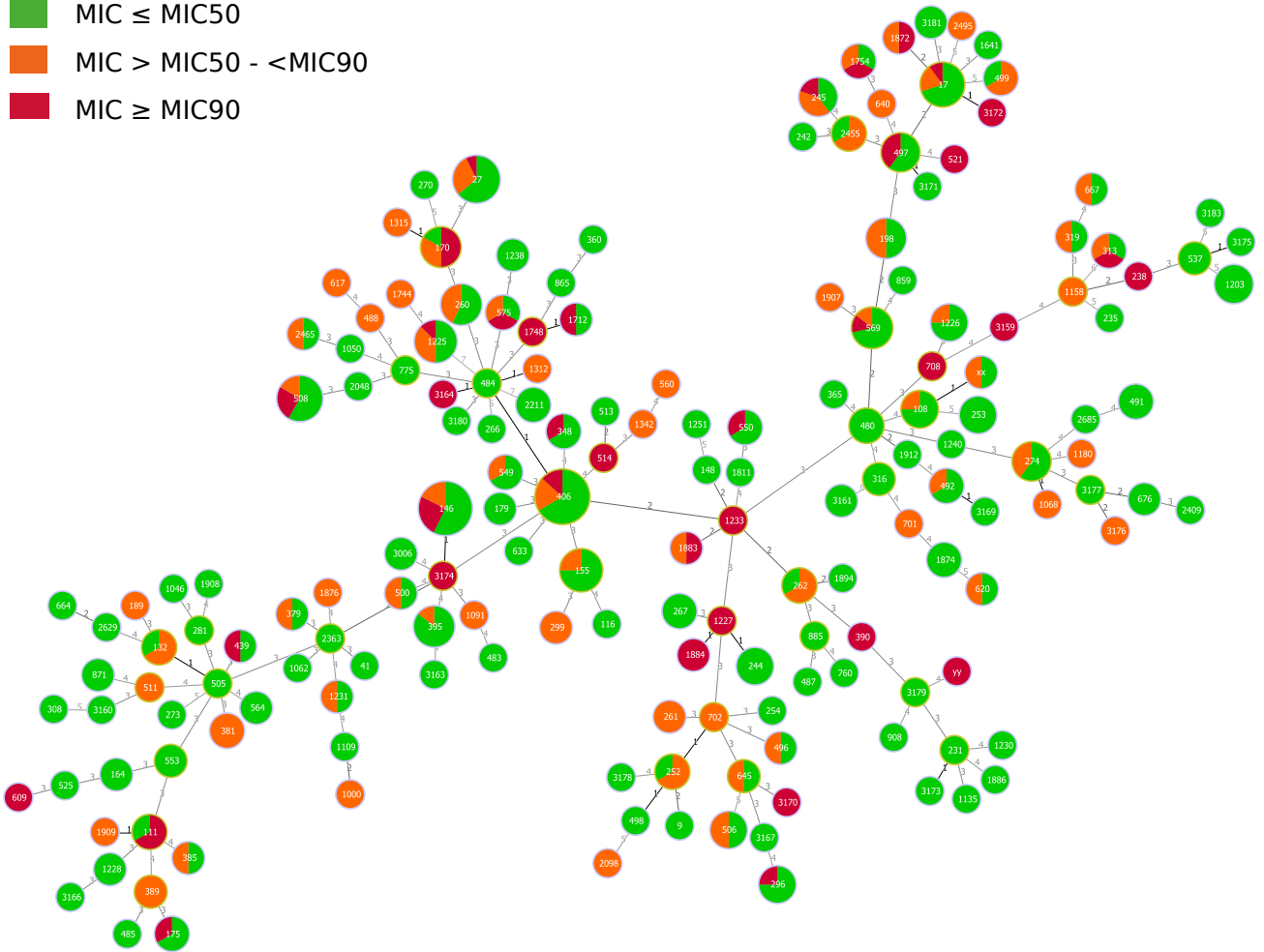
Supplemental figure 4G: MIC distribution of meropenem

- MIC \leq MIC50
- MIC $>$ MIC50 - $<$ MIC90
- MIC \geq MIC90



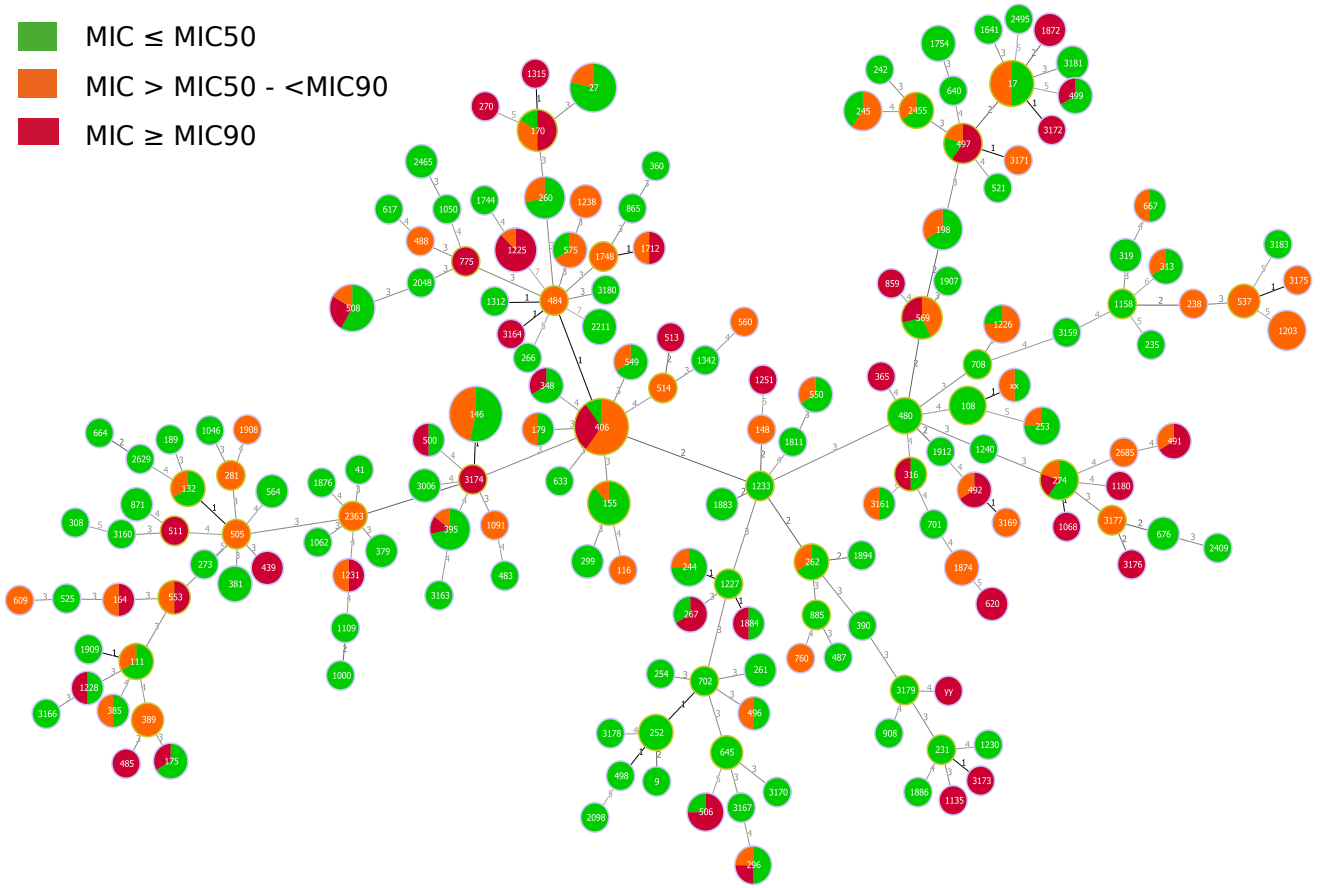
Supplemental figure 4H: MIC distribution of imipenem

- MIC \leq MIC50
- MIC $>$ MIC50 - $<$ MIC90
- MIC \geq MIC90



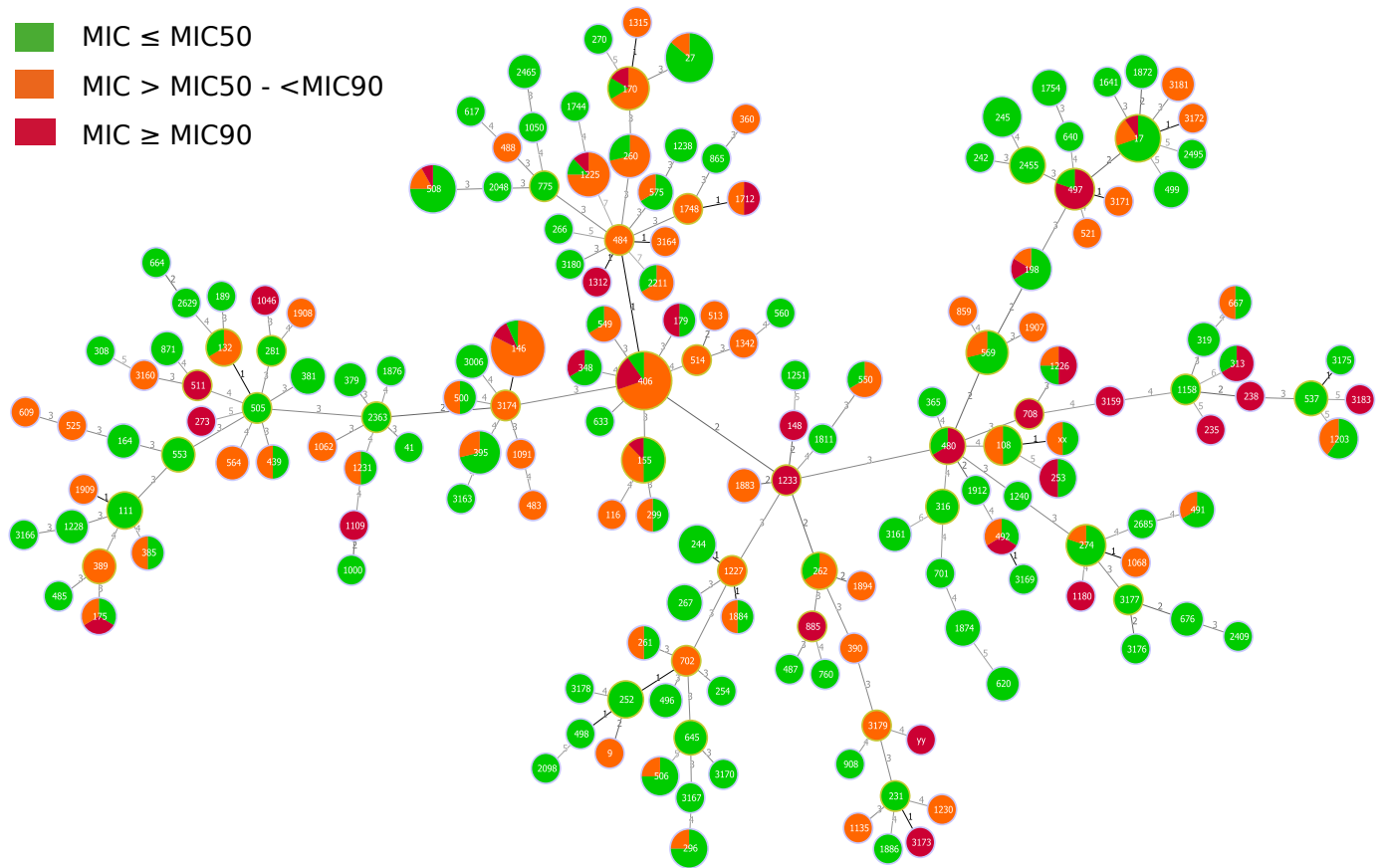
Supplemental figure 4I: MIC distribution of aztreonam

- MIC \leq MIC50
- MIC $>$ MIC50 - $<$ MIC90
- MIC \geq MIC90



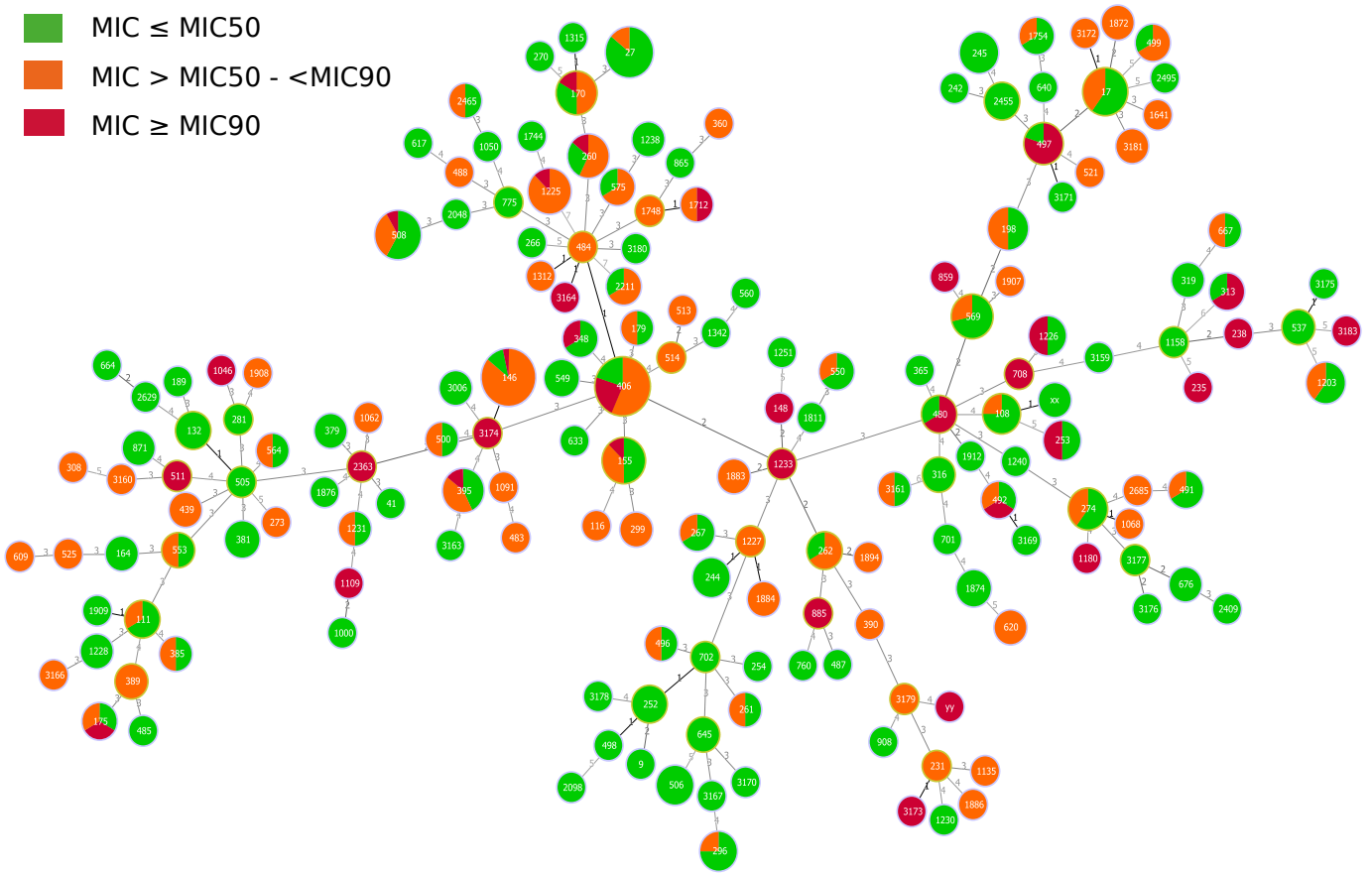
Supplemental figure 4J: MIC distribution of ciprofloxacin

- MIC \leq MIC50
- MIC $>$ MIC50 - $<$ MIC90
- MIC \geq MIC90



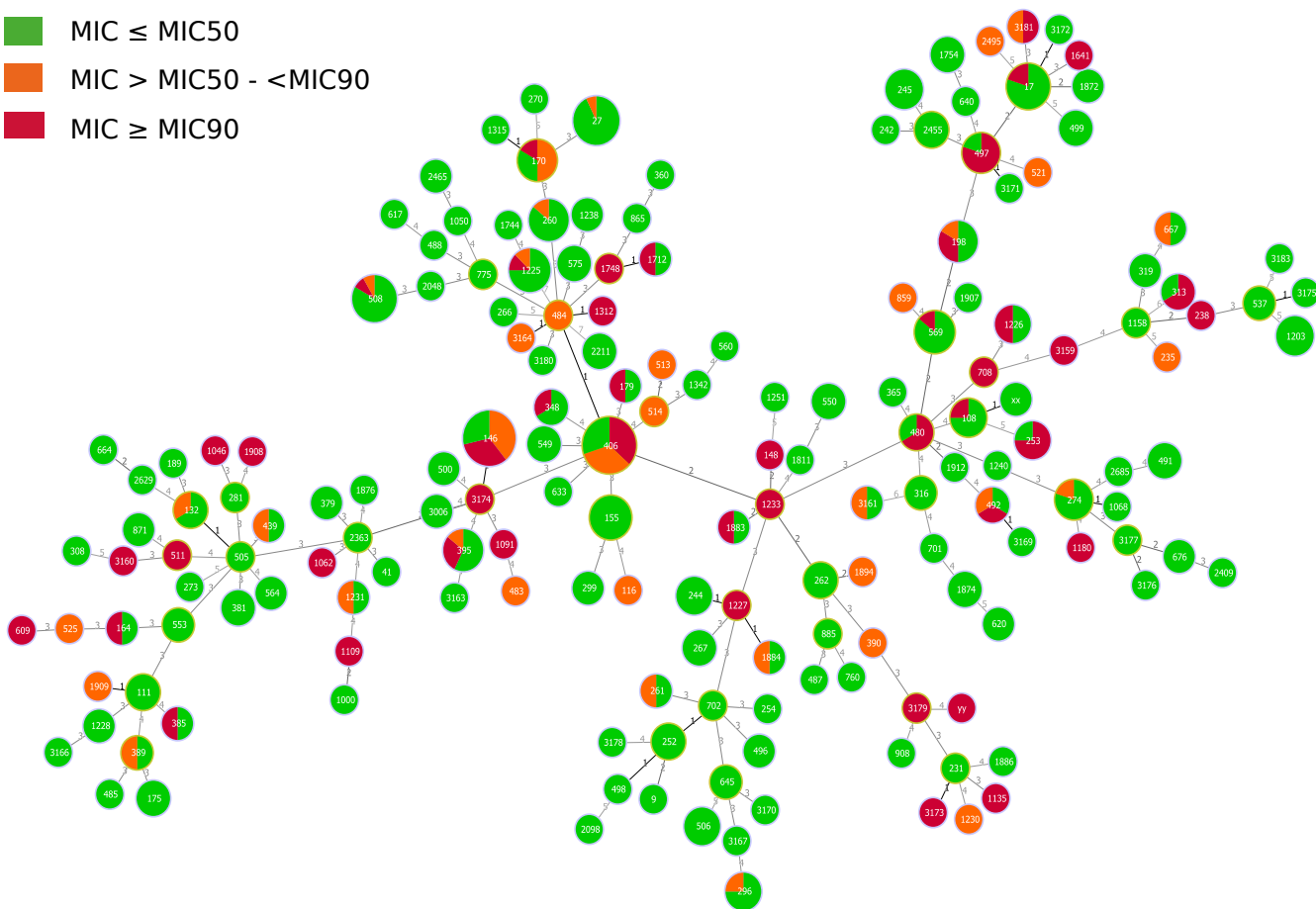
Supplemental figure 4K: MIC distribution of gentamicin

- MIC \leq MIC50
- MIC > MIC50 - < MIC90
- MIC \geq MIC90



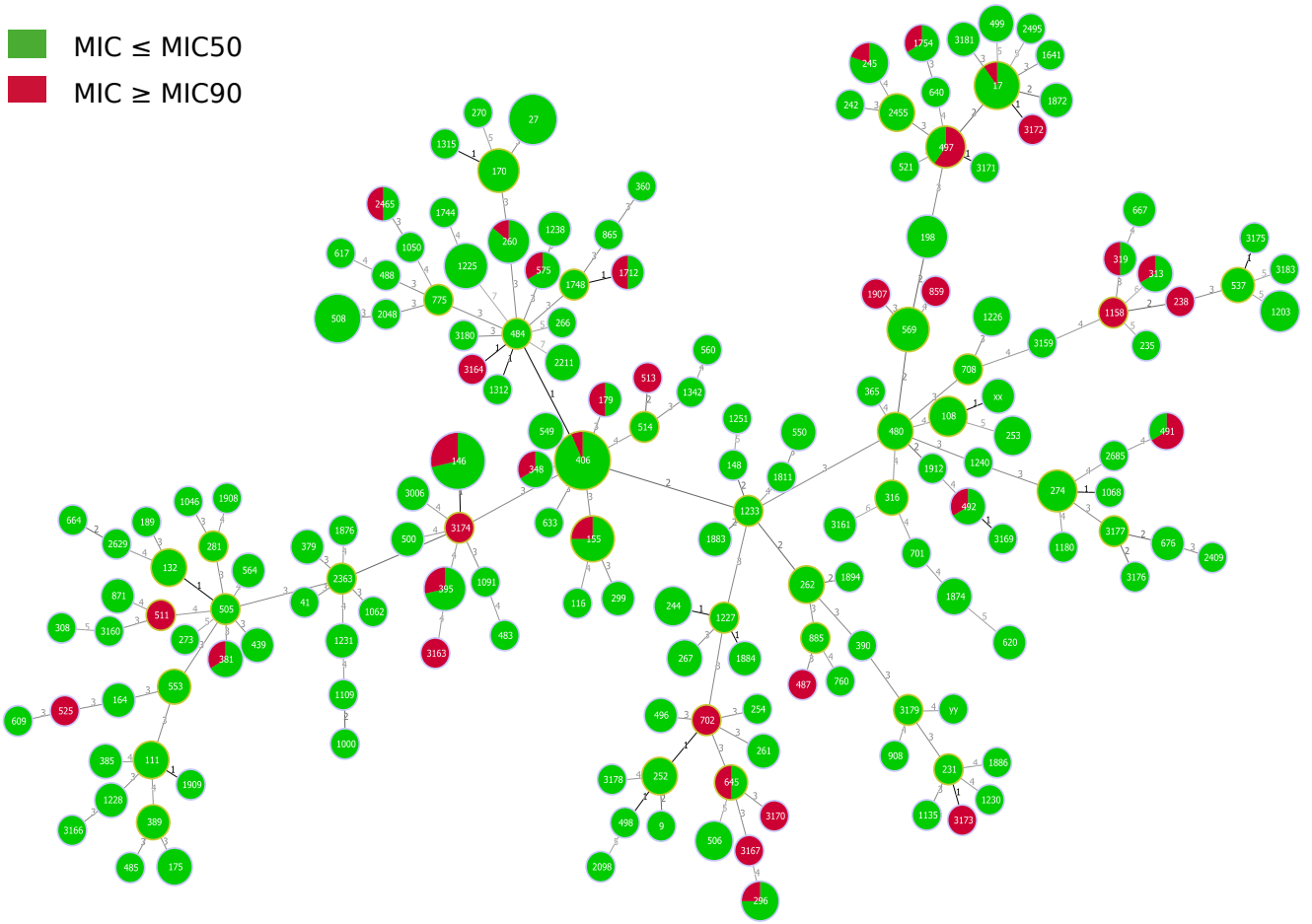
Supplemental figure 4L: MIC distribution of tobramycin

- MIC \leq MIC50
- MIC $>$ MIC50 - $<$ MIC90
- MIC \geq MIC90



Supplemental figure 4M: MIC distribution of amikacin

■ MIC ≤ MIC50
■ MIC ≥ MIC90



Supplemental figure 4N: MIC distribution of colistin

Supplemental Table S1: Source data by Sequence type (ST) for antibiotic susceptibility, geographic origin and age category of 412 *Pseudomonas aeruginosa* strains from persons with cystic fibrosis.

Values in the tables with antibiotics, indicate the minimal inhibitory concentration in mg/L. Uneven values indicate a value above the highest dilution tested. I.e.: 17: >16 mg/L; 65: >64 mg/L; 129: >128 mg/L; 257: >256 mg/L. Acs, aro, gua, mut, nuo, pps and trp are the housekeeping genes used to assign sequence types. Adult = patient age ≥ 18 years; ped = patient age < 18 years.

ID	ST	acs	aro	gua	mut	nuo	pps	trp	murepavadin	cefepime	ceftazidime	ceftazidime-avibactam	ceftolozane-tazobactam	piperacillin-tazobactam	meropenem	imipenem	aztreonam	ciprofloxacin	gentamicin	tobramycin	amikacin	colistin	Adult / ped	Country
16-540803	9	6	6	4	3	3	44	7	0.25	8	2	2	1	2	0.12	4	8	0.25	8	1	16	1	Ped	the Netherlands
16-533590	17	11	5	1	7	9	4	7	0.06	4	2	4	2	4	0.12	1	8	2	2	0.5	8	0.5	Ped	the Netherlands
16-533592	17	11	5	1	7	9	4	7	0.06	1	0.5	1	0.5	2	2	8	2	2	2	1	8	1	Ped	the Netherlands
16-538227	17	11	5	1	7	9	4	7	0.06	2	16	4	0.5	4	0.12	2	16	2	2	0.5	2	0.5	Ped	the Netherlands
16-540762	17	11	5	1	7	9	4	7	0.12	8	4	4	1	8	0.25	1	32	1	2	0.5	8	1	Ped	the Netherlands
16-543337	17	11	5	1	7	9	4	7	0.25	8	2	2	1	2	0.06	1	1	0.25	16	2	64	0.5	Adult	Northern Ireland
16-543376	17	11	5	1	7	9	4	7	0.12	8	1	2	1	1	0.06	0.5	1	0.5	4	0.5	8	0.5	Adult	Northern Ireland
16-543383	17	11	5	1	7	9	4	7	0.5	8	4	4	2	2	0.06	1	2	0.25	64	8	64	0.5	Adult	Northern Ireland
16-543385	17	11	5	1	7	9	4	7	0.25	8	1	2	1	1	0.06	1	1	0.5	8	2	16	1	Adult	Northern Ireland
16-555920	17	11	5	1	7	9	4	7	0.12	4	4	1	1	1	0.06	1	256	2	4	2	8	17	Adult	the Netherlands
16-555921	17	11	5	1	7	9	4	7	0.06	4	2	1	0.5	4	0.25	1	4	4	2	0.5	2	1	Adult	the Netherlands
16-537458	27	6	5	6	7	4	6	7	0.25	2	1	0.5	0.5	0.5	0.06	0.5	0.5	0.5	4	1	16	1	Ped	Spain
16-537459	27	6	5	6	7	4	6	7	0.5	1	0.25	0.5	0.12	1	0.06	0.12	0.25	0.25	0.5	0.5	1	0.5	Ped	Spain
16-537474	27	6	5	6	7	4	6	7	0.03	8	8	8	2	16	4	8	128	4	2	0.5	2	0.5	Ped	Spain
16-537519	27	6	5	6	7	4	6	7	0.03	4	1	1	0.5	0.5	0.06	1	0.5	0.25	4	0.5	8	0.5		Spain
16-537520	27	6	5	6	7	4	6	7	0.06	4	1	2	0.5	8	0.12	1	8	2	4	1	16	1		Spain
16-537521	27	6	5	6	7	4	6	7	0.12	2	0.5	2	0.25	4	0.06	0.25	0.25	0.5	4	1	16	0.5		Spain
16-537522	27	6	5	6	7	4	6	7	0.25	8	1	2	1	8	0.12	0.5	8	0.25	16	2	32	0.5		Spain
16-537523	27	6	5	6	7	4	6	7	0.03	8	2	2	1	8	1	16	16	1	4	1	16	0.5		Spain

16-537525	27	6	5	6	7	4	6	7	0.25	32	4	32	0.5	32	2	16	16	1	4	0.5	4	0.5		Spain
16-538276	27	6	5	6	7	4	6	7	17	0.5	0.25	8	0.5	0.25	0.06	0.25	0.25	0.5	4	1	16	1	Adult	the Netherlands
16-540764	27	6	5	6	7	4	6	7	0.25	8	2	2	1	1	0.5	2	8	4	8	1	16	1	Ped	the Netherlands
16-547161	27	6	5	6	7	4	6	7	0.12	0.5	0.5	0.5	0.25	0.25	0.06	0.12	0.5	0.12	1	0.25	4	0.5	Adult	the Netherlands
16-547162	27	6	5	6	7	4	6	7	0.03	1	1	1	0.25	16	0.06	0.5	16	0.12	1	0.25	4	1	Adult	the Netherlands
16-548981	27	6	5	6	7	4	6	7	0.25	16	4	1	0.5	64	16	32	16	0.25	4	2	16	0.5	Adult	the Netherlands
16-538333	41	28	5	6	11	4	4	14	0.06	16	8	4	1	128	0.12	0.5	8	0.5	2	0.25	2	1	Adult	the Netherlands
16-538190	108	39	5	20	5	1	6	31	0.25	8	2	4	1	2	0.06	1	1	0.25	8	1	16	1	Ped	the Netherlands
16-538235	108	39	5	20	5	1	6	31	0.25	8	4	2	2	8	1	8	8	1	16	8	64	1	Ped	the Netherlands
16-538244	108	39	5	20	5	1	6	31	1	8	0.5	1	1	2	0.06	0.25	0.5	0.5	2	0.5	4	1	Ped	the Netherlands
16-540766	108	39	5	20	5	1	6	31	0.06	4	2	8	1	16	0.25	1	16	0.06	4	1	8	0.5	Ped	the Netherlands
16-538239	111	17	5	5	4	4	4	3	0.12	1	1	2	1	8	0.12	2	4	0.5	2	0.5	2	1	Ped	the Netherlands
16-543355	111	17	5	5	4	4	4	3	0.06	1	256	2	0.5	8	4	16	257	4	2	2	4	0.5	Adult	Northern Ireland
16-543357	111	17	5	5	4	4	4	3	0.06	4	1	2	1	4	0.06	2	257	0.12	2	0.5	8	1	Adult	Northern Ireland
16-537349	116	28	24	22	18	3	15	7	0.25	16	2	2	2	1	1	16	1	2	16	2	32	1	Adult	Spain
16-537393	132	6	20	1	3	4	4	2	0.12	8	2	2	0.5	64	0.12	1	4	0.5	8	0.25	8	1	Adult	Spain
16-538280	132	6	20	1	3	4	4	2	2	8	2	1	0.5	32	1	4	16	4	8	0.5	32	0.5	Adult	the Netherlands
16-540768	132	6	20	1	3	4	4	2	0.06	2	2	2	0.5	8	0.25	2	16	0.25	4	0.5	2	1	Adult	the Netherlands
16-543338	146	6	5	11	3	4	23	1	0.25	129	128	32	16	256	8	16	1	4	16	2	32	0.5	Adult	United Kingdom
16-543341	146	6	5	11	3	4	23	1	8	4	1	1	2	0.25	1	32	0.5	1	64	8	128	8	Adult	United Kingdom
16-543358	146	6	5	11	3	4	23	1	1	4	2	2	2	0.5	2	16	0.5	2	64	8	64	2	Adult	United Kingdom
16-543363	146	6	5	11	3	4	23	1	0.25	8	2	8	2	64	4	16	1	2	32	4	64	0.5	Adult	United Kingdom

16-543365	146	6	5	11	3	4	23	1	0.25	8	16	2	1	2	4	8	16	2	4	0.5	8	0.5	Adult	United Kingdom
16-543371	146	6	5	11	3	4	23	1	0.25	8	1	1	1	1	0.5	4	1	0.5	8	2	32	1	Adult	United Kingdom
16-543372	146	6	5	11	3	4	23	1	1	8	1	1	0.5	0.5	2	16	1	0.5	8	2	32	4	Adult	United Kingdom
16-543373	146	6	5	11	3	4	23	1	0.25	8	1	1	0.5	1	0.5	4	0.5	1	16	2	32	0.5	Adult	United Kingdom
16-543374	146	6	5	11	3	4	23	1	0.12	2	32	0.25	1	0.5	8	16	32	0.5	16	4	32	1	Adult	United Kingdom
16-543375	146	6	5	11	3	4	23	1	0.5	8	0.5	0.25	2	0.5	0.5	4	0.5	1	16	4	32	0.5	Adult	United Kingdom
16-543377	146	6	5	11	3	4	23	1	1	2	0.5	1	0.25	1	0.12	0.25	0.25	1	2	0.25	4	0.5	Adult	United Kingdom
16-543378	146	6	5	11	3	4	23	1	0.12	32	16	2	0.5	32	0.5	2	8	0.5	8	2	16	1	Adult	United Kingdom
16-543381	146	6	5	11	3	4	23	1	4	4	1	0.25	1	0.25	0.12	0.5	0.25	1	32	4	64	4	Adult	United Kingdom
16-543386	146	6	5	11	3	4	23	1	17	0.25	2	0.5	2	2	0.5	4	256	2	8	1	16	2	Adult	United Kingdom
16-543389	146	6	5	11	3	4	23	1	0.5	129	256	16	2	257	16	32	256	2	32	2	64	0.5	Adult	United Kingdom
16-543390	146	6	5	11	3	4	23	1	0.12	129	256	4	4	257	0.5	1	8	2	16	2	64	0.5	Adult	United Kingdom
16-543392	146	6	5	11	3	4	23	1	0.25	128	128	8	16	257	16	32	256	4	16	4	32	0.5	Adult	United Kingdom
16-543395	146	6	5	11	3	4	23	1	1	32	16	2	2	2	4	8	1	1	32	8	32	1	Adult	United Kingdom
16-543396	146	6	5	11	3	4	23	1	2	128	256	16	8	257	8	16	257	2	64	16	64	1	Adult	United Kingdom
16-543398	146	6	5	11	3	4	23	1	0.25	64	32	8	2	16	8	32	32	2	32	2	32	0.5	Adult	United Kingdom
16-543399	146	6	5	11	3	4	23	1	0.12	32	64	8	2	128	2	16	128	1	16	4	16	17	Adult	United Kingdom
16-543402	146	6	5	11	3	4	23	1	0.12	32	64	4	2	128	4	32	128	1	16	4	16	17	Adult	United Kingdom
16-543403	146	6	5	11	3	4	23	1	0.25	64	16	16	4	2	2	8	2	4	8	2	16	0.5	Adult	United Kingdom
16-543406	146	6	5	11	3	4	23	1	0.12	128	256	8	1	257	0.5	2	128	1	16	4	64	1	Adult	United Kingdom
16-543407	146	6	5	11	3	4	23	1	0.25	8	8	4	2	2	4	16	16	0.5	16	4	32	1	Adult	United Kingdom
16-543409	146	6	5	11	3	4	23	1	1	16	1	2	4	2	4	8	32	2	32	4	64	16	Adult	United Kingdom

16-543410	146	6	5	11	3	4	23	1	2		16	8	4	2	8	8	16	4	2	16	2	16	0.5	Adult	United Kingdom
16-543412	146	6	5	11	3	4	23	1	1		32	2	2	2	2	2	8	1	1	16	2	32	0.5	Adult	United Kingdom
16-543366	148	17	5	1	3	13	6	7	2		8	32	1	2	2	4	32	8	2	128	64	129	1	Adult	United Kingdom
16-537332	155	28	5	36	3	3	13	7	17		0.12	0.5	0.5	0.5	0.5	0.06	0.25	0.5	1	64	64	16	1	Adult	Spain
16-537443	155	28	5	36	3	3	13	7	0.06		1	0.25	2	0.5	2	1	0.25	0.25	0.25	0.5	0.5	1	1	Adult	Spain
16-538282	155	28	5	36	3	3	13	7	0.03		1	2	2	0.5	4	4	32	8	0.12	0.5	0.5	2	1	Adult	the Netherlands
16-540769	155	28	5	36	3	3	13	7	0.12		8	1	1	1	0.5	0.12	4	0.5	0.25	2	0.5	4	0.5	Ped	the Netherlands
16-542604	155	28	5	36	3	3	13	7	0.25		4	8	1	1	16	1	2	8	1	8	2	16	2	Adult	Australia
16-542605	155	28	5	36	3	3	13	7	0.12		2	0.5	0.5	0.5	0.5	0.06	0.25	0.5	0.25	8	2	16	2	Adult	Australia
16-542606	155	28	5	36	3	3	13	7	0.12		8	8	4	1	4	1	4	32	2	16	4	16	1	Adult	Australia
16-547156	155	28	5	36	3	3	13	7	0.06		2	2	1	0.5	4	4	32	16	0.12	0.5	0.12	2	1	Adult	the Netherlands
16-537337	164	1	5	1	11	4	10	10	0.12		4	2	2	1	4	1	16	8	4	4	0.5	129	0.5	Ped	Spain
16-540813	164	1	5	1	11	4	10	10	0.25		4	8	1	0.5	1	2	16	8	8	4	1	8	1	Adult	the Netherlands
16-538285	170	36	5	29	7	4	10	7	0.12		32	2	4	2	256	0.25	2	32	4	32	0.5	32	0.5	Adult	the Netherlands
16-538305	170	36	5	29	7	4	10	7	2		1	2	0.25	2	0.25	0.06	1	0.5	4	64	16	128	1	Adult	the Netherlands
16-538307	170	36	5	29	7	4	10	7	0.06		8	32	0.5	1	0.5	16	32	64	1	2	0.5	4	0.5	Adult	the Netherlands
16-540771	170	36	5	29	7	4	10	7	0.5		32	128	16	2	257	0.5	4	256	8	8	2	32	0.5	Adult	the Netherlands
16-547184	170	36	5	29	7	4	10	7	0.25		32	64	64	4	16	64	2	256	8	16	4	32	0.5	Adult	the Netherlands
16-555913	170	36	5	29	7	4	10	7	0.12		64	128	8	8	257	8	32	256	8	8	2	16	0.5	Adult	the Netherlands
16-537368	175	28	22	5	3	3	14	19	0.06		32	257	16	257	257	65	129	257	16	128	128	16	0.5	Adult	Spain
16-538284	175	28	22	5	3	3	14	19	2		8	1	2	1	1	0.06	0.5	1	0.25	8	2	16	0.5	Adult	the Netherlands
16-540772	175	28	22	5	3	3	14	19	0.12		0.5	2	2	1	2	0.12	2	2	0.03	0.5	0.25	1	1	Adult	the Netherlands

16-538213	179	36	27	28	3	4	13	7	0.12	1	1	1	0.5	4	0.06	2	8	0.5	2	0.5	4	16	Ped	the Netherlands
16-540774	179	36	27	28	3	4	13	7	0.25	8	2	1	0.5	1	0.25	4	1	4	128	8	128	1	Ped	the Netherlands
16-537440	189	26	143	1	3	4	4	10	0.06	8	4	4	1	16	8	16	32	1	4	1	8	1	Ped	Spain
16-537451	198	11	5	11	11	3	27	7	0.5	8	4	8	1	16	8	8	16	2	4	0.5	16	0.5	Adult	Spain
16-537454	198	11	5	11	11	3	27	7	0.5	8	4	4	1	32	8	16	16	2	4	1	8	0.5	Adult	Spain
16-537483	198	11	5	11	11	3	27	7	0.016	0.25	1	0.25	1	0.25	0.25	1	1	0.12	0.12	0.25	0.12	0.5	Adult	Spain
16-537484	198	11	5	11	11	3	27	7	0.5	2	1	1	0.5	0.25	0.06	0.5	0.5	0.5	64	8	129	1	Adult	Spain
16-538225	198	11	5	11	11	3	27	7	0.12	8	1	2	1	1	0.06	1	0.5	1	32	4	64	0.5	Ped	the Netherlands
16-540775	198	11	5	11	11	3	27	7	0.12	2	2	4	0.5	8	1	16	16	0.25	4	2	32	1	Ped	the Netherlands
16-555929	231	6	5	36	63	4	30	2	0.12	4	1	1	1	1	0.06	1	0.5	0.5	4	2	16	1	Adult	the Netherlands
16-537342	235	38	11	3	13	1	2	4	0.12	4	32	2	2	2	1	1	2	0.5	129	128	32	1	Ped	Spain
16-537445	238	5	1	59	6	1	33	42	8	129	64	16	1	257	2	8	257	4	129	129	128	17	Adult	Spain
16-537461	242	28	5	5	11	3	15	44	0.06	2	0.5	0.5	0.25	0.25	0.06	0.25	0.25	1	2	0.25	4	1	Adult	Spain
16-538224	244	17	5	12	3	14	4	7	8	2	16	0.25	0.016	1	4	8	2	2	0.12	1	0.12	1	Ped	the Netherlands
16-540779	244	17	5	12	3	14	4	7	0.06	2	2	2	0.5	8	1	2	8	0.12	4	0.5	2	1	Ped	the Netherlands
16-540784	244	17	5	12	3	14	4	7	0.12	2	2	2	0.5	8	1	2	8	0.12	2	1	4	1	Ped	the Netherlands
16-542607	244	17	5	12	3	14	4	7	0.06	0.5	1	0.5	0.5	0.25	0.25	2	0.5	0.06	1	0.5	2	1	Adult	Australia
16-537468	245	39	6	12	11	3	15	2	0.06	0.25	0.25	0.25	0.12	0.25	0.06	0.25	0.5	0.5	0.25	0.12	0.25	0.5	Adult	Spain
16-547151	245	39	6	12	11	3	15	2	0.12	8	8	8	1	64	2	2	64	1	1	0.5	2	2	Adult	the Netherlands
16-547152	245	39	6	12	11	3	15	2	0.06	8	2	2	1	4	0.5	1	4	2	1	0.25	2	1	Adult	the Netherlands
16-547154	245	39	6	12	11	3	15	2	0.06	2	2	4	0.5	8	0.5	4	16	2	2	0.5	2	1	Adult	the Netherlands
16-547155	245	39	6	12	11	3	15	2	0.06	4	1	2	0.5	4	0.5	4	256	2	0.5	0.5	1	1	Adult	the Netherlands

16-537526	252	6	28	4	3	3	4	7	0.03	2	4	2	0.5	4	0.12	1	16	0.12	1	0.5	2	0.5		Spain
16-537527	252	6	28	4	3	3	4	7	0.06	8	2	8	0.5	4	0.12	2	8	0.25	2	0.5	4	1		Spain
16-538240	252	6	28	4	3	3	4	7	0.12	8	2	4	2	8	0.12	0.5	16	0.5	4	1	16	1	Ped	the Netherlands
16-533586	253	4	4	16	12	1	6	3	0.12	1	0.5	2	2	2	0.12	0.5	1	0.5	129	128	129	0.5	Ped	the Netherlands
16-533588	253	4	4	16	12	1	6	3	0.12	2	0.5	1	0.12	1	0.06	0.12	0.5	4	4	0.5	129	0.5	Ped	the Netherlands
16-537424	253	4	4	16	12	1	6	3	0.03	2	0.25	0.25	0.12	2	0.06	0.12	0.25	0.25	0.5	0.12	1	1	Adult	Spain
16-537442	253	4	4	16	12	1	6	3	0.25	4	1	1	1	1	0.12	1	0.5	1	129	129	64	1	Adult	Spain
16-537478	254	6	5	58	11	3	4	37	0.12	2	0.5	2	0.25	4	0.12	1	2	0.5	4	1	16	0.5	Adult	Spain
16-538242	260	14	5	10	7	4	13	7	8	0.12	0.25	0.25	0.5	0.25	0.06	0.12	0.5	0.25	8	2	32	1	Ped	the Netherlands
16-540780	260	14	5	10	7	4	13	7	0.5	8	2	4	1	32	0.5	2	16	2	16	2	16	1	Adult	the Netherlands
16-543367	260	14	5	10	7	4	13	7	0.12	16	4	1	0.25	16	0.12	2	1	0.25	8	16	4	1	Ped	United Kingdom
16-546333	260	14	5	10	7	4	13	7	0.12	8	2	2	1	8	0.12	0.5	8	0.12	8	8	16	1	Adult	the Netherlands
16-547164	260	14	5	10	7	4	13	7	0.06	2	2	4	0.5	4	0.25	2	16	0.25	2	0.5	2	1	Adult	the Netherlands
16-548952	260	14	5	10	7	4	13	7	0.25	4	2	2	1	8	1	8	16	4	16	2	16	2	Model	United Kingdom
16-555937	260	14	5	10	7	4	13	7	0.25	0.25	4	1	1	0.5	0.06	2	8	0.12	1	0.5	4	1	Ped	the Netherlands
16-538232	261	105	5	30	3	3	4	14	0.12	4	2	2	1	8	1	1	16	0.5	1	0.25	1	1	Ped	the Netherlands
16-540782	261	105	5	30	3	3	4	14	0.12	8	4	4	2	64	1	2	32	0.5	8	2	32	1	Ped	the Netherlands
16-537488	262	17	5	1	3	4	15	7	0.12	2	2	4	0.5	8	0.12	1	16	0.12	4	1	8	1	Ped	Spain
16-548979	262	17	5	1	3	4	15	7	0.12	8	1	2	1	1	0.12	1	0.5	0.5	16	2	16	0.5	Adult	the Netherlands
16-555927	262	17	5	1	3	4	15	7	0.25	16	32	4	0.5	257	4	64	64	2	8	2	8	1	Adult	the Netherlands
16-540786	266	16	5	11	72	44	7	52	0.06	1	1	2	0.5	4	0.06	1	4	0.25	2	1	4	1	Adult	the Netherlands
16-538340	267	19	5	12	11	11	4	14	0.03	2	4	1	1	2	2	0.12	2	8	1	2	4	1	Adult	the Netherlands

16-538341	267	19	5	12	11	11	4	14	0.12	1	1	2	0.25	2	0.06	0.12	8	8	0.25	0.12	4	0.5	Adult	the Netherlands
16-540787	267	19	5	12	11	11	4	14	0.06	1	2	2	0.5	4	1	4	8	0.12	0.5	0.5	1	1	Ped	the Netherlands
16-537347	270	22	3	17	5	2	10	7	0.03	0.25	4	1	0.5	2	0.06	0.5	8	33	2	0.5	4	0.5	Adult	Spain
16-540811	273	104	4	36	71	4	4	53	0.12	8	0.25	0.25	0.12	16	0.5	8	0.25	1	129	4	2	0.5	Adult	the Netherlands
16-537340	274	23	5	11	7	1	12	7	0.12	8	4	1	1	1	4	32	2	0.5	2	0.5	8	1	Adult	Spain
16-537386	274	23	5	11	7	1	12	7	0.12	4	2	1	0.5	1	0.5	32	0.5	1	4	2	16	1	Ped	Spain
16-538200	274	23	5	11	7	1	12	7	0.06	2	2	4	0.5	4	0.25	1	16	0.06	4	1	16	1	Ped	the Netherlands
16-540788	274	23	5	11	7	1	12	7	0.25	4	1	1	1	1	0.06	1	0.5	4	4	1	8	0.5	Adult	the Netherlands
16-555930	274	23	5	11	7	1	12	7	0.12	16	32	2	2	128	0.5	8	32	33	16	4	32	1	Adult	the Netherlands
16-538218	281	11	57	1	5	4	4	2	0.06	16	1	2	0.5	8	0.25	1	1	2	0.5	0.25	1	0.5	Ped	the Netherlands
16-537375	296	44	8	5	3	15	6	26	0.06	0.5	1	2	1	4	0.12	4	4	1	0.5	0.25	1	0.5	Adult	Spain
16-538195	296	44	8	5	3	15	6	26	0.25	16	8	8	1	32	4	8	128	0.5	16	2	32	1	Ped	the Netherlands
16-543349	296	44	8	5	3	15	6	26	0.5	1	1	0.5	0.25	0.5	0.06	1	0.5	8	0.5	0.25	2	2	Adult	United Kingdom
16-543369	296	44	8	5	3	15	6	26	0.06	2	2	2	0.5	2	0.25	16	1	4	0.5	0.5	2	0.5	Adult	United Kingdom
16-538197	299	17	5	36	3	3	7	3	0.12	4	32	4	1	64	0.25	0.5	16	0.12	4	2	8	0.5	Ped	the Netherlands
16-538293	299	17	5	36	3	3	7	3	0.25	4	8	4	1	64	0.5	2	16	0.12	8	2	16	1	Ped	the Netherlands
16-540796	308	13	4	5	5	12	7	15	0.06	0.25	0.5	0.5	0.5	0.5	0.06	1	0.5	0.03	2	4	2	0.5	Ped	the Netherlands
16-537452	313	47	8	7	6	8	11	40	0.06	8	2	2	1	4	0.06	1	8	0.12	4	1	16	1	Adult	Spain
16-537472	313	47	8	7	6	8	11	40	1	64	64	8	8	8	16	8	32	1	129	16	128	2	Adult	Spain
16-543380	313	47	8	7	6	8	11	40	0.12	32	64	2	4	257	0.25	4	257	4	64	16	128	1	Adult	United Kingdom
16-537441	316	13	8	9	3	1	6	9	0.06	0.5	0.25	0.5	0.25	1	0.06	0.25	2	0.06	0.5	0.12	1	1	Ped	Spain
16-540809	316	13	8	9	3	1	6	9	0.06	4	1	2	0.5	8	0.12	2	8	8	2	0.5	4	1	Adult	the Netherlands

16-538189	319	5	4	3	3	1	11	8	0.06	2	1	2	0.5	32	0.12	1	16	0.12	4	1	4	4	Ped	the Netherlands
16-538247	319	5	4	3	3	1	11	8	0.25	2	0.5	0.25	0.5	0.25	0.06	0.5	0.5	0.03	4	0.5	8	0.5	Ped	the Netherlands
16-538226	348	22	20	11	3	3	3	7	0.06	1	1	1	0.5	4	0.5	4	8	0.12	1	0.5	2	1	Ped	the Netherlands
16-538344	348	22	20	11	3	3	3	7	0.5	8	2	2	1	1	0.12	1	257	8	129	128	129	8	Adult	the Netherlands
16-540789	348	22	20	11	3	3	3	7	0.12	4	4	2	0.25	64	4	8	8	1	2	0.5	4	1	Ped	the Netherlands
16-537463	360	15	5	36	11	27	4	2	1	8	4	0.5	2	8	2	4	8	1	8	2	16	1	Adult	Spain
16-540824	365	27	11	5	3	1	6	64	0.06	16	8	8	2	4	0.06	1	2	16	2	0.5	2	0.5	Adult	the Netherlands
16-537376	379	39	5	11	28	4	4	63	0.06	2	1	2	0.5	8	0.25	0.5	2	0.06	1	0.5	2	1	Ped	Spain
16-538192	379	39	5	11	28	4	4	63	0.12	8	2	4	1	8	0.5	2	16	1	4	1	16	1	Ped	the Netherlands
16-538283	381	11	20	1	65	4	4	10	0.06	2	2	4	0.5	8	0.25	1	16	0.12	1	0.5	2	4	Adult	the Netherlands
16-547171	381	11	20	1	65	4	4	10	0.06	4	8	2	0.5	8	0.06	1	32	0.25	2	0.5	8	0.5	Adult	the Netherlands
16-555871	381	11	20	1	65	4	4	10	0.06	2	2	2	0.5	8	0.06	4	16	0.12	2	1	4	1	Adult	the Netherlands
16-537341	385	15	5	5	5	50	4	14	0.03	0.12	0.5	0.5	0.25	0.5	0.06	0.5	0.5	0.03	0.25	0.25	0.12	0.5	Adult	Spain
16-537429	385	15	5	5	5	50	4	14	0.06	32	128	8	8	128	16	64	64	2	8	4	64	1	Adult	Spain
16-547158	389	17	22	5	3	1	14	3	0.5	8	4	4	1	16	0.5	0.5	64	4	16	4	32	1	Adult	the Netherlands
16-547160	389	17	22	5	3	1	14	3	0.5	16	8	4	2	32	4	0.25	64	2	16	4	16	1	Adult	the Netherlands
16-540790	390	39	5	1	3	4	46	56	0.12	16	256	8	4	257	16	32	128	1	8	8	32	0.5	Ped	the Netherlands
16-537339	395	6	5	1	1	1	12	1	0.12	2	2	0.25	1	0.25	0.12	0.25	1	0.5	2	2	129	0.5	Adult	Spain
16-537350	395	6	5	1	1	1	12	1	0.03	4	0.5	1	0.25	4	0.12	0.5	0.25	2	0.25	0.12	4	0.5	Adult	Spain
16-537363	395	6	5	1	1	1	12	1	0.06	1	2	2	0.25	4	0.25	1	8	0.06	0.25	0.25	1	1	Ped	Spain
16-537366	395	6	5	1	1	1	12	1	0.12	2	4	4	1	8	1	1	16	8	2	32	4	17	Adult	Spain
16-538207	395	6	5	1	1	1	12	1	0.25	8	2	2	1	1	0.5	16	1	0.5	16	2	32	1	Ped	the Netherlands

16-538289	395	6	5	1	1	1	12	1	0.06	2	1	1	0.5	2	0.12	1	0.5	0.5	1	0.25	2	0.5	Adult	the Netherlands
16-540791	395	6	5	1	1	1	12	1	16	2	0.5	1	0.12	0.25	0.25	2	1	0.06	32	8	129	2	Ped	the Netherlands
16-538191	406	40	5	11	3	4	13	7	0.25	16	4	4	1	4	8	32	8	2	32	8	64	1	Ped	the Netherlands
16-538201	406	40	5	11	3	4	13	7	17	4	1	0.5	0.25	0.5	0.5	1	2	1	4	1	8	1	Ped	the Netherlands
16-538279	406	40	5	11	3	4	13	7	0.5	4	1	1	1	0.5	1	16	0.5	4	16	2	32	0.5	Adult	the Netherlands
16-538281	406	40	5	11	3	4	13	7	0.25	4	4	0.25	1	0.5	16	32	8	0.03	8	0.5	16	0.5	Adult	the Netherlands
16-538288	406	40	5	11	3	4	13	7	17	0.12	0.25	0.25	0.25	0.25	0.25	2	0.5	0.5	16	0.25	64	0.5	Adult	the Netherlands
16-538291	406	40	5	11	3	4	13	7	0.5	2	0.25	1	0.5	0.5	0.06	1	1	2	8	2	32	0.5	Adult	the Netherlands
16-538296	406	40	5	11	3	4	13	7	0.12	64	256	16	8	257	32	64	257	8	8	2	16	1	Adult	the Netherlands
16-538298	406	40	5	11	3	4	13	7	16	2	1	0.5	0.5	0.25	1	16	1	2	16	4	32	1	Adult	the Netherlands
16-538309	406	40	5	11	3	4	13	7	4	32	64	4	4	2	32	64	128	4	64	8	64	1	Adult	the Netherlands
16-538311	406	40	5	11	3	4	13	7	1	16	256	0.25	8	0.25	16	32	64	8	128	32	129	0.5	Adult	the Netherlands
16-538317	406	40	5	11	3	4	13	7	0.12	8	2	2	2	16	32	64	4	2	4	1	16	1	Adult	the Netherlands
16-538318	406	40	5	11	3	4	13	7	0.12	16	64	8	2	128	8	32	4	4	32	2	16	1	Adult	the Netherlands
16-538320	406	40	5	11	3	4	13	7	8	16	64	1	4	1	16	64	256	4	8	1	16	1	Adult	the Netherlands
16-540792	406	40	5	11	3	4	13	7	4	4	1	1	0.5	0.5	8	32	2	2	4	1	8	1	Adult	the Netherlands
16-540793	406	40	5	11	3	4	13	7	0.12	8	4	2	2	1	0.5	2	16	8	16	4	32	1	Ped	the Netherlands
16-540794	406	40	5	11	3	4	13	7	0.12	8	4	4	1	2	8	8	8	2	16	2	64	0.5	Ped	the Netherlands
16-540827	406	40	5	11	3	4	13	7	0.25	8	16	2	1	0.5	32	64	16	2	128	32	128	1	Adult	the Netherlands
16-540829	406	40	5	11	3	4	13	7	0.12	8	2	2	1	1	8	16	4	16	16	2	32	0.5	Adult	the Netherlands
16-540892	406	40	5	11	3	4	13	7	1	8	4	1	1	0.5	16	32	4	4	64	64	64	2	Ped	the Netherlands
16-540893	406	40	5	11	3	4	13	7	8	16	16	2	1	2	16	64	8	16	32	16	64	1	Ped	the Netherlands

16-540896	406	40	5	11	3	4	13	7	0.5	16	8	8	4	4	64	64	16	4	64	16	128	0.5	Adult	the Netherlands
16-540897	406	40	5	11	3	4	13	7	0.5	64	128	8	4	257	32	128	128	2	128	8	129	1	Adult	the Netherlands
16-540902	406	40	5	11	3	4	13	7	16	4	1	0.5	0.5	0.5	4	64	4	4	8	2	16	2	Adult	the Netherlands
16-540903	406	40	5	11	3	4	13	7	0.12	8	32	2	1	4	0.5	4	32	8	8	16	16	1	Adult	the Netherlands
16-540904	406	40	5	11	3	4	13	7	0.25	4	4	2	1	2	16	32	2	32	32	16	64	1	Adult	the Netherlands
16-547168	406	40	5	11	3	4	13	7	0.25	16	64	8	2	257	1	4	64	8	16	4	32	1	Adult	the Netherlands
16-547173	406	40	5	11	3	4	13	7	0.12	16	8	0.5	2	4	8	32	2	2	8	2	32	0.5	Adult	the Netherlands
16-548988	406	40	5	11	3	4	13	7	0.25	8	2	2	1	2	0.06	0.5	1	4	16	2	32	1	Adult	the Netherlands
16-555924	406	40	5	11	3	4	13	7	1	16	8	2	2	2	16	64	4	8	32	4	32	0.5	Adult	the Netherlands
16-555925	406	40	5	11	3	4	13	7	2	4	1	2	2	0.5	0.06	0.5	1	2	32	4	32	0.5	Adult	the Netherlands
16-538290	439	6	68	20	11	4	4	7	2	16	64	32	0.5	4	32	32	128	16	8	4	32	0.5	Adult	the Netherlands
16-543353	439	6	68	20	11	4	4	7	0.25	0.12	2	0.25	0.12	0.25	0.12	1	1	8	2	2	2	0.5	Adult	United Kingdom
16-538203	480	11	5	11	3	1	6	27	0.12	8	0.5	1	0.12	1	0.06	0.25	0.5	0.06	4	0.5	8	1	Ped	the Netherlands
16-538299	480	11	5	11	3	1	6	27	0.06	2	1	1	0.25	0.5	0.06	1	0.5	1	129	128	129	1	Adult	the Netherlands
16-538300	480	11	5	11	3	1	6	27	0.06	4	0.5	1	0.25	0.5	0.06	0.5	0.25	1	128	32	129	1	Adult	the Netherlands
16-543370	483	116	5	6	5	3	12	68	0.5	1	0.25	0.25	2	0.25	0.06	0.12	0.25	1	16	8	32	0.5	Adult	United Kingdom
16-540797	484	40	5	11	82	4	13	7	0.5	16	2	2	1	1	2	2	1	2	32	4	32	1	Ped	the Netherlands
16-540798	485	11	76	5	3	61	14	3	0.12	4	0.5	1	0.5	2	0.06	0.25	0.5	8	0.5	0.12	0.25	1	Ped	the Netherlands
16-538198	487	11	5	6	18	4	15	19	4	2	0.25	2	0.12	2	0.06	0.25	0.25	1	2	0.25	4	4	Ped	the Netherlands
16-540799	488	16	27	11	5	4	38	7	0.25	8	4	8	1	32	4	1	16	2	8	2	16	1	Ped	the Netherlands
16-538245	491	16	55	7	61	1	4	45	0.5	4	2	1	1	4	0.5	4	2	4	2	1	4	2	Ped	the Netherlands
16-540890	491	16	55	7	61	1	4	45	0.06	4	2	2	1	4	1	4	8	8	4	0.5	4	1	Ped	the Netherlands

16-540891	491	16	55	7	61	1	4	45	2		8	4	1	0.5	2	0.5	4	2	8	8	2	16	8	Ped	the Netherlands
16-540801	492	40	5	30	61	1	7	14	0.12	0.25	1	1	0.25	1	0.5	1	4	4	2	0.25	4	0.5	Adult	the Netherlands	
16-555917	492	40	5	30	61	1	7	14	0.25	1	64	1	0.25	1	4	32	32	8	8	2	32	2	Adult	the Netherlands	
16-555926	492	40	5	30	61	1	7	14	17	8	2	1	2	1	8	64	2	8	129	64	129	1	Adult	the Netherlands	
16-537485	496	6	5	26	3	3	38	61	0.12	0.5	4	2	1	2	1	2	16	4	2	2	8	1	Adult	Spain	
16-540804	496	6	5	26	3	3	38	61	0.12	4	1	2	0.5	0.5	0.06	2	1	0.25	4	1	8	1	Ped	the Netherlands	
16-538186	497	11	5	1	7	3	56	7	1	16	0.25	0.5	2	2	8	8	0.25	1	129	129	129	8	Ped	the Netherlands	
16-538294	497	11	5	1	7	3	56	7	2	128	256	16	257	64	2	1	256	16	129	128	129	2	Adult	the Netherlands	
16-540805	497	11	5	1	7	3	56	7	0.03	129	257	8	257	128	1	1	256	8	129	129	129	0.5	Adult	the Netherlands	
16-540830	497	11	5	1	7	3	56	7	2	8	4	2	2	2	0.25	1	2	33	129	64	129	16	Adult	the Netherlands	
16-548985	497	11	5	1	7	3	56	7	1	8	1	1	1	4	0.12	2	1	2	1	0.25	2	0.5	Adult	the Netherlands	
16-540806	498	6	28	65	3	3	4	7	0.06	1	2	2	1	1	0.06	1	1	1	4	1	16	1	Ped	the Netherlands	
16-537380	499	11	5	7	27	2	7	33	0.25	4	2	1	1	2	0.25	1	1	8	4	2	8	0.5	Adult	Spain	
16-538208	499	11	5	7	27	2	7	33	0.03	1	4	2	0.5	4	0.12	0.5	32	0.25	1	0.5	2	1	Ped	the Netherlands	
16-540807	499	11	5	7	27	2	7	33	0.25	8	32	4	0.5	256	16	32	32	1	4	2	8	1	Adult	the Netherlands	
16-537465	500	11	57	7	3	4	15	1	0.25	8	4	4	1	4	0.25	2	16	0.5	8	2	16	1	Adult	Spain	
16-540808	500	11	57	7	3	4	15	1	0.06	2	1	1	0.5	4	0.12	2	0.5	8	0.12	0.12	0.25	1	Adult	the Netherlands	
16-538326	505	6	20	1	11	4	4	2	0.12	4	0.25	0.5	0.25	0.5	0.12	2	0.25	2	4	1	16	1	Adult	the Netherlands	
16-538301	506	15	84	12	5	5	13	1	0.12	8	2	2	0.5	4	0.06	2	1	16	1	0.25	2	0.5	Adult	the Netherlands	
16-538302	506	15	84	12	5	5	13	1	4	8	16	4	2	64	4	32	4	33	2	1	0.25	0.5	Adult	the Netherlands	
16-538303	506	15	84	12	5	5	13	1	8	8	16	2	2	16	16	64	16	33	1	1	2	1	Adult	the Netherlands	
16-540898	506	15	84	12	5	5	13	1	0.12	4	8	2	1	8	2	16	32	0.5	8	1	16	1	Adult	the Netherlands	

16-537435	508	15	5	11	3	2	4	3	0.12	8	64	2	1	0.25	4	32	257	2	4	2	16	0.5	Adult	Spain
16-537436	508	15	5	11	3	2	4	3	0.12	16	64	0.25	4	16	16	2	128	8	129	64	129	1	Adult	Spain
16-537438	508	15	5	11	3	2	4	3	0.12	4	2	0.5	0.12	0.5	1	8	1	1	4	1	8	0.5	Adult	Spain
16-537449	508	15	5	11	3	2	4	3	0.12	4	16	1	1	4	0.12	1	32	0.5	8	4	32	1	Adult	Spain
16-537450	508	15	5	11	3	2	4	3	0.25	16	4	4	1	2	0.5	1	4	8	4	1	8	0.5	Adult	Spain
16-537476	508	15	5	11	3	2	4	3	0.06	4	2	2	0.5	4	1	8	8	4	0.25	2	2	0.5	Adult	Spain
16-537512	508	15	5	11	3	2	4	3	0.06	2	2	2	0.5	4	0.25	1	8	0.12	1	0.5	1	1		Spain
16-537514	508	15	5	11	3	2	4	3	0.06	8	2	8	0.5	8	0.12	1	16	0.12	1	0.5	2	0.5		Spain
16-537515	508	15	5	11	3	2	4	3	0.12	16	1	32	1	1	0.06	1	1	0.25	4	1	16	0.5		Spain
16-537516	508	15	5	11	3	2	4	3	0.12	4	2	2	1	1	0.06	1	1	0.25	4	1	8	0.5		Spain
16-537517	508	15	5	11	3	2	4	3	0.06	4	1	4	0.5	2	0.06	1	0.5	0.5	1	0.25	2	1		Spain
16-540810	508	15	5	11	3	2	4	3	0.5	32	257	4	4	257	16	32	128	16	8	4	16	1	Adult	the Netherlands
16-540812	511	6	85	1	5	1	4	68	8	129	128	32	4	257	16	64	16	16	129	64	129	17	Adult	the Netherlands
16-540814	513	117	5	32	3	4	25	75	8	16	4	2	1	32	2	8	8	8	32	4	32	4	Adult	the Netherlands
16-540815	514	1	5	32	3	4	25	3	1	32	128	16	4	257	8	32	257	2	32	4	32	1	Adult	the Netherlands
16-540823	521	28	88	1	21	3	53	7	0.5	32	128	2	2	257	4	32	128	1	32	4	32	1	Adult	the Netherlands
16-540826	525	16	5	5	11	2	10	10	1	2	1	1	0.25	2	0.12	2	4	1	16	8	32	4	Adult	the Netherlands
16-538211	537	5	1	25	88	1	1	42	0.06	4	1	1	0.5	8	0.25	0.5	2	2	0.25	0.12	0.5	1	Ped	the Netherlands
16-540894	537	5	1	25	88	1	1	42	0.12	16	4	4	2	16	1	2	8	4	1	0.5	2	1	Ped	the Netherlands
16-538328	549	7	5	12	3	4	1	7	2	8	1	0.5	0.5	4	1	4	2	0.5	8	1	16	0.5	Adult	the Netherlands
16-543339	549	7	5	12	3	4	1	7	0.12	8	1	1	1	1	0.06	1	0.5	2	4	1	8	0.5	Adult	United Kingdom
16-547167	549	7	5	12	3	4	1	7	0.5	32	4	16	2	16	4	2	16	0.12	8	0.5	8	1	Adult	the Netherlands

16-537460	550	119	10	3	5	64	6	77	4		64	2	4	2	32	32	32	257	4	8	4	16	0.5	Adult	Spain
16-548990	550	119	10	3	5	64	6	77	0.12		16	2	2	4	2	0.12	1	1	0.25	8	0.5	16	1	Adult	the Netherlands
16-548992	550	119	10	3	5	64	6	77	0.12		8	0.5	1	1	0.5	0.06	0.5	0.5	0.25	4	0.5	16	1	Adult	the Netherlands
16-547178	553	17	5	1	11	4	4	45	0.06		4	2	1	0.5	2	0.06	0.25	1	4	0.5	0.25	1	0.5	Adult	the Netherlands
16-547180	553	17	5	1	11	4	4	45	0.06		4	16	1	0.5	2	0.25	2	4	8	0.5	4	2	0.5	Adult	the Netherlands
16-537379	560	5	5	57	13	1	40	3	0.06		8	4	4	2	8	8	64	16	4	1	0.5	4	1	Adult	Spain
16-537388	564	6	10	5	11	2	15	2	0.25		4	1	1	0.5	0.5	0.06	0.5	0.5	0.5	8	2	16	0.5	Adult	Spain
16-537389	564	6	10	5	11	2	15	2	0.12		8	1	1	0.5	1	0.06	0.5	0.5	0.5	8	1	16	0.5	Adult	Spain
16-537455	569	11	5	11	11	3	6	27	0.12		2	1	1	1	4	0.25	1	1	4	1	0.25	2	1	Adult	Spain
16-537481	569	11	5	11	11	3	6	27	0.25		2	1	1	0.5	2	0.06	1	0.5	4	0.5	0.12	1	0.5	Adult	Spain
16-543343	569	11	5	11	11	3	6	27	0.25		129	128	257	257	257	32	32	257	16	32	8	64	0.5	Adult	United Kingdom
16-543350	569	11	5	11	11	3	6	27	0.25		4	0.5	0.5	0.5	2	0.25	0.5	1	16	4	0.5	8	0.5	Adult	United Kingdom
16-547165	569	11	5	11	11	3	6	27	17		4	1	0.5	0.5	0.5	0.06	0.5	1	4	8	2	16	1	Adult	the Netherlands
16-547166	569	11	5	11	11	3	6	27	1		4	2	0.5	2	2	0.06	0.12	2	0.25	1	0.5	2	0.5	Adult	the Netherlands
16-555932	569	11	5	11	11	3	6	27	0.06		1	2	2	0.5	4	0.06	2	16	0.25	1	0.5	2	1	Ped	the Netherlands
16-537372	575	11	5	83	2	4	13	7	0.06		32	256	4	16	257	16	128	257	2	8	2	16	2	Adult	Spain
16-537480	575	11	5	83	2	4	13	7	0.06		64	128	257	32	256	32	64	64	2	4	2	16	0.5	Adult	Spain
16-537482	575	11	5	83	2	4	13	7	0.25		4	0.5	1	1	0.25	0.5	8	0.25	0.25	4	0.12	16	0.5	Adult	Spain
16-538243	609	16	22	5	11	4	6	10	0.25		32	64	16	4	257	16	32	128	4	32	2	64	1	Ped	the Netherlands
16-537377	617	16	101	11	97	4	69	88	0.12		4	4	2	0.5	8	16	32	32	0.5	0.5	0.25	2	1	Ped	Spain
16-538304	620	9	7	63	13	8	7	8	0.06		128	64	2	2	0.5	2	0.5	32	32	4	2	16	1	Adult	the Netherlands
16-540822	620	9	7	63	13	8	7	8	0.06		129	64	2	4	2	2	2	4	16	4	2	16	1	Adult	the Netherlands

16-548982	633	125	5	6	3	4	13	23	0.12	1	1	2	0.5	8	0.12	0.25	8	0.12	1	0.12	2	1	Adult	the Netherlands
16-537433	640	11	5	98	5	3	10	85	0.12	4	2	4	1	16	0.25	1	16	0.25	2	1	2	1	Ped	Spain
16-538209	645	6	5	5	3	3	13	1	0.06	4	2	2	0.5	4	0.5	2	16	0.25	2	0.5	4	4	Ped	the Netherlands
16-538295	645	6	5	5	3	3	13	1	0.03	2	1	2	0.5	0.5	0.06	1	8	0.25	2	1	8	1	Adult	the Netherlands
16-537392	664	28	3	94	13	1	4	10	0.12	2	1	1	0.016	0.5	2	4	1	0.03	4	1	8	0.5	Adult	Spain
16-538234	667	5	67	76	3	1	7	62	0.06	2	2	2	0.5	8	0.06	2	8	0.25	1	0.5	2	1	Ped	the Netherlands
16-547181	667	5	67	76	3	1	7	62	0.25	32	64	2	2	257	0.25	2	64	4	16	8	32	0.25	Adult	the Netherlands
16-537448	676	28	5	11	77	3	4	92	0.12	4	1	1	1	1	0.06	0.5	1	0.5	4	1	16	0.5	Adult	Spain
16-537466	676	28	5	11	77	3	4	92	0.12	4	0.5	1	0.06	0.25	0.25	1	0.25	0.25	2	0.12	8	0.25	Adult	Spain
16-540802	701	29	1	9	13	1	6	23	0.12	4	4	8	0.5	16	0.12	1	64	0.5	2	0.5	2	1	Ped	the Netherlands
16-537528	702	6	5	4	3	3	4	7	0.06	8	2	32	1	256	0.06	1	16	0.5	8	0.5	8	2		Spain
16-537426	708	11	3	11	3	1	4	60	17	129	257	32	257	256	32	32	257	0.5	129	128	129	1	Adult	Spain
16-537334	760	15	121	36	5	4	15	8	0.12	8	1	0.5	2	1	0.12	1	1	2	4	1	4	0.5	Adult	Spain
16-538338	775	28	5	11	5	4	4	7	0.12	2	1	2	0.5	8	2	2	8	8	1	0.25	2	1	Adult	the Netherlands
16-543362	859	11	133	11	5	3	15	19	1	4	0.25	0.25	2	0.25	0.06	1	0.25	16	32	32	32	2	Adult	United Kingdom
16-537373	865	15	5	83	11	4	4	7	0.5	0.5	0.5	1	0.5	1	0.5	2	1	0.25	0.5	0.12	2	0.5	Adult	Spain
16-537391	871	16	3	1	5	1	55	61	0.12	16	2	2	1	4	8	16	1	1	4	0.5	16	0.5	Adult	Spain
16-538246	871	16	3	1	5	1	55	61	0.06	4	2	1	1	8	0.25	1	8	0.12	4	0.5	8	1	Ped	the Netherlands
16-537344	885	17	5	4	5	4	15	19	0.06	16	2	2	1	4	0.25	1	8	0.5	129	129	8	1	Ped	Spain
16-537361	908	39	6	4	14	4	6	2	16	4	1	1	1	4	0.5	0.25	8	0.12	2	0.5	4	1	Adult	Spain
16-538230	1000	62	8	3	11	1	15	1	0.12	4	4	4	0.5	16	0.25	4	32	0.5	2	0.5	4	1	Ped	the Netherlands
16-537475	1046	17	45	20	5	4	4	2	0.12	16	8	1	2	32	0.25	1	8	0.5	64	16	129	1	Adult	Spain

16-538297	1050	1	47	11	5	4	15	10	0.06	1	1	1	0.5	0.25	0.12	2	8	0.25	2	0.5	4	1	Adult	the Netherlands
16-547150	1062	22	5	91	33	4	4	1	2	8	2	2	0.5	2	0.5	1	1	1	16	2	64	0.5	Adult	the Netherlands
16-537381	1068	23	5	11	7	1	12	137	0.12	4	2	2	1	8	0.12	0.5	16	8	8	2	16	1	Adult	Spain
16-543364	1091	6	5	11	5	3	6	1	0.12	32	8	8	2	16	8	16	32	4	32	4	64	0.5	Adult	United Kingdom
16-537338	1109	16	14	3	11	1	15	1	0.5	8	1	4	1	4	0.12	1	2	0.5	129	32	129	0.5	Adult	Spain
16-538223	1135	6	8	11	63	4	15	2	2	2	1	0.25	1	2	0.12	1	2	8	8	4	64	0.5	Ped	the Netherlands
16-555933	1158	5	4	3	6	1	33	42	0.12	8	4	4	1	8	0.25	2	32	0.25	2	1	4	4	Ped	the Netherlands
16-537378	1180	65	112	11	3	1	12	138	0.5	64	64	8	1	257	8	32	64	8	64	16	128	1	Adult	Spain
16-543345	1203	33	1	25	6	6	7	5	0.12	2	1	1	0.25	0.5	0.06	1	0.5	2	4	1	16	1	Adult	United Kingdom
16-543346	1203	33	1	25	6	6	7	5	0.5	4	2	0.5	0.25	4	0.25	2	0.5	2	8	2	8	1	Adult	United Kingdom
16-543347	1203	33	1	25	6	6	7	5	1	4	1	1	0.5	1	0.25	2	0.5	2	4	1	8	0.5	Adult	United Kingdom
16-543348	1203	33	1	25	6	6	7	5	1	4	0.5	0.5	0.25	0.5	0.12	2	0.5	2	2	0.5	4	0.5	Adult	United Kingdom
16-543382	1203	33	1	25	6	6	7	5	17	2	0.25	0.5	0.12	0.25	0.06	0.5	0.25	2	16	2	16	0.5	Adult	United Kingdom
16-538277	1225	118	106	85	92	60	54	72	1	16	1	2	2	32	16	32	32	16	8	2	16	1	Adult	the Netherlands
16-540816	1225	118	106	85	92	60	54	72	0.5	8	4	4	1	16	0.12	0.25	32	16	8	2	16	1	Adult	the Netherlands
16-540818	1225	118	106	85	92	60	54	72	0.5	4	1	2	1	8	0.12	0.5	16	16	8	2	16	0.5	Adult	the Netherlands
16-540899	1225	118	106	85	92	60	54	72	1	2	1	1	0.25	2	0.06	2	1	2	8	2	32	0.5	Adult	the Netherlands
16-540900	1225	118	106	85	92	60	54	72	0.5	4	1	0.5	0.5	0.5	0.06	2	0.5	8	8	2	16	0.5	Adult	the Netherlands
16-540901	1225	118	106	85	92	60	54	72	8	16	128	1	2	257	0.25	2	128	8	129	32	129	0.5	Adult	the Netherlands
16-546331	1225	118	106	85	92	60	54	72	1	8	4	1	2	1	0.06	1	1	8	8	2	8	1	Adult	the Netherlands
16-546332	1225	118	106	85	92	60	54	72	0.5	8	1	1	0.5	1	0.12	4	1	8	4	4	4	0.5	Adult	the Netherlands
16-538229	1226	11	66	11	3	29	4	9	0.06	2	4	4	0.5	8	0.12	2	16	0.12	2	1	4	1	Ped	the Netherlands

16-547175	1226	11	66	11	3	29	4	9	8		2	0.5	0.5	1	1	0.06	0.12	0.5	4	64	16	128	0.5	Adult	the Netherlands
16-547176	1226	11	66	11	3	29	4	9	8		4	0.5	2	1	2	0.06	0.5	0.5	2	8	0.5	16	0.25	Adult	the Netherlands
16-547177	1226	11	66	11	3	29	4	9	4		2	0.5	0.5	0.5	1	0.06	0.12	0.5	2	64	16	64	0.5	Adult	the Netherlands
16-555918	1227	17	5	12	3	11	4	7	4		16	32	0.25	1	0.25	4	16	257	1	16	4	64	0.5	Adult	the Netherlands
16-537362	1228	11	5	5	29	4	4	26	0.12		8	2	2	1	1	0.12	8	1	8	2	1	8	1	Adult	Spain
16-538330	1228	11	5	5	29	4	4	26	0.06		1	1	2	0.25	2	0.12	0.25	8	0.03	1	0.5	2	1	Adult	the Netherlands
16-538278	1230	15	5	36	72	4	42	19	2		8	4	2	1	1	0.12	0.25	2	0.12	16	1	32	0.5	Adult	the Netherlands
16-538323	1231	15	3	11	11	1	18	1	0.25		8	32	2	0.5	16	0.25	0.5	32	8	2	1	8	1	Adult	the Netherlands
16-538325	1231	15	3	11	11	1	18	1	16		8	2	4	1	16	8	32	8	4	16	4	32	1	Adult	the Netherlands
16-555904	1233	17	5	11	3	4	6	7	0.5		128	257	32	4	257	2	4	256	1	64	16	128	0.5	Adult	the Netherlands
16-538342	1238	11	5	11	2	4	38	10	0.06		8	1	2	0.5	4	0.06	0.25	4	2	1	0.25	2	1	Adult	the Netherlands
16-538343	1238	11	5	11	2	4	38	10	0.06		16	1	2	0.5	8	0.06	0.25	2	2	1	0.25	2	0.5	Adult	the Netherlands
16-538205	1240	28	5	11	7	1	6	61	0.06		4	1	1	0.25	0.5	0.12	1	0.5	0.12	4	1	16	0.5	Ped	the Netherlands
16-537427	1251	35	11	25	6	13	6	84	0.016		4	2	4	0.5	8	1	4	8	16	0.5	0.5	4	0.5	Adult	Spain
16-538196	1312	40	5	11	82	4	13	152	0.03		16	2	8	0.5	64	16	32	16	0.5	64	8	64	0.5	Ped	the Netherlands
16-538286	1315	36	5	29	132	4	10	7	0.12		128	8	2	2	2	32	128	64	16	8	1	16	0.5	Adult	the Netherlands
16-540905	1342	1	5	26	3	1	10	3	0.06		4	8	4	1	16	2	32	64	0.5	8	1	8	1	Adult	the Netherlands
16-537331	1641	11	10	1	3	27	4	7	0.06		16	4	4	0.5	128	0.5	1	4	0.5	4	4	64	0.5	Adult	Spain
16-543361	1712	16	5	30	11	4	31	7	8		2	2	0.5	1	0.25	0.5	16	2	8	32	4	16	2	Ped	Northern Ireland
16-543387	1712	16	5	30	11	4	31	7	0.5		128	257	257	32	257	32	32	257	4	129	32	129	0.5	Adult	Northern Ireland
16-538236	1744	118	106	85	86	72	73	208	0.06		4	8	8	1	32	1	2	64	1	2	0.25	2	0.5	Ped	the Netherlands
16-537329	1748	16	5	30	11	4	13	7	4		129	64	4	4	257	16	16	257	2	32	4	128	0.5	Adult	Spain

16-555934	1754	11	182	5	5	3	10	25	0.25	8	4	2	1	8	0.06	0.25	1	1	2	0.5	2	1	Ped	the Netherlands
16-555935	1754	11	182	5	5	3	10	25	0.12	2	2	2	0.5	4	0.06	1	16	0.25	2	1	4	0.5	Ped	the Netherlands
16-555936	1754	11	182	5	5	3	10	25	0.25	1	1	1	1	1	0.12	128	256	1	2	2	4	16	Ped	the Netherlands
16-537394	1811	119	10	11	3	3	6	77	0.12	2	0.25	2	1	2	0.06	0.12	1	0.5	4	0.25	8	0.5	Adult	Spain
16-537370	1872	11	5	1	117	9	4	190	0.016	8	8	8	1	32	32	16	128	32	4	2	8	0.5	Adult	Spain
16-537371	1872	11	5	1	117	9	4	190	0.016	8	4	8	1	32	32	32	64	33	4	2	8	0.5	Adult	Spain
16-537382	1874	29	188	95	13	8	6	11	0.12	2	0.5	0.5	0.25	0.5	0.06	0.5	0.5	2	0.25	0.12	0.5	1	Adult	Spain
16-537384	1874	29	188	95	13	8	6	11	0.06	2	0.5	0.25	0.25	0.25	0.06	0.5	0.5	4	0.25	0.12	0.5	1	Adult	Spain
16-537385	1874	29	188	95	13	8	6	11	0.06	2	0.5	1	0.25	1	0.06	0.5	0.5	4	0.5	0.12	0.5	1	Adult	Spain
16-537387	1876	40	181	11	11	3	4	9	0.12	2	2	4	0.5	4	0.12	4	16	0.12	2	0.5	4	1	Ped	Spain
16-537446	1883	17	5	11	3	4	12	56	1	129	257	128	257	257	32	16	257	0.5	32	4	64	1	Adult	Spain
16-537470	1883	17	5	11	3	4	12	56	0.12	8	0.5	2	2	4	0.06	1	16	0.25	8	2	8	1	Adult	Spain
16-537383	1884	17	5	12	3	99	4	7	1	64	257	32	32	257	64	16	257	0.03	2	4	16	1	Adult	Spain
16-537456	1884	17	5	12	3	99	4	7	1	64	257	256	64	257	32	32	257	8	8	2	32	1	Adult	Spain
16-537330	1886	7	133	36	63	2	15	2	0.03	0.5	0.25	0.25	0.12	0.5	0.06	0.12	0.5	0.25	0.12	4	0.25	0.5	Ped	Spain
16-537359	1894	17	187	1	3	4	15	3	0.06	4	2	1	1	0.25	0.06	1	1	1	8	4	32	0.5	Adult	Spain
16-537418	1907	11	5	11	131	3	53	1	4	2	2	1	0.12	4	0.25	0.5	16	1	8	2	16	4	Adult	Spain
16-537420	1908	11	6	19	5	4	15	9	0.5	4	4	1	0.25	0.5	2	8	0.5	4	16	2	64	0.5	Adult	Spain
16-537421	1909	17	5	5	4	4	4	191	0.5	4	2	0.25	1	0.25	0.25	0.5	16	0.06	16	0.5	32	1	Adult	Spain
16-537431	1912	11	5	11	3	1	15	14	0.25	2	1	1	0.5	0.5	0.25	2	1	0.5	4	1	8	1	Adult	Spain
16-538204	2048	40	5	11	5	2	4	37	0.12	2	1	2	0.5	4	0.06	0.12	4	0.5	2	0.5	4	0.5	Ped	the Netherlands
16-547186	2098	51	4	65	167	15	6	7	0.06	4	2	8	0.25	8	0.25	8	32	0.25	2	0.5	4	1	Adult	the Netherlands

16-538193	2211	87	34	114	37	86	100	170	4		16	2	4	0.5	8	0.25	0.5	4	1	8	2	16	1	Ped	the Netherlands
16-538194	2211	87	34	114	37	86	100	170	16	8	2	2	2	4	2	16	8	0.5	8	2	16	1	Ped	the Netherlands	
16-538220	2211	87	34	114	37	86	100	170	1	1	1	2	1	8	2	16	8	0.12	1	0.25	2	1	Ped	the Netherlands	
16-537346	2363	6	5	11	11	4	4	1	0.12	4	2	2	2	4	0.06	0.25	4	4	4	4	32	8	1	Adult	Spain
16-537336	2409	17	5	11	61	3	4	2	0.12	4	1	1	0.5	2	0.06	0.5	1	1	4	1	8	0.5	Ped	Spain	
16-547172	2455	175	5	1	11	3	15	7	0.12	8	8	4	1	8	0.25	2	16	2	4	1	8	1	Adult	the Netherlands	
16-547187	2455	175	5	1	11	3	15	7	0.06	8	4	4	1	16	0.25	2	16	0.5	4	1	8	0.5	Adult	the Netherlands	
16-555914	2455	175	5	1	11	3	15	7	0.12	4	1	1	1	2	0.12	1	4	0.25	2	0.25	8	1	Adult	the Netherlands	
16-555872	2465	1	3	11	5	4	29	2	17	1	2	2	0.5	4	0.06	2	32	0.5	1	4	2	17	Adult	the Netherlands	
16-555873	2465	1	3	11	5	4	29	2	17	2	1	4	0.5	8	0.06	1	4	0.5	2	0.5	16	1	Adult	the Netherlands	
16-538237	2495	11	8	36	72	2	4	171	0.03	4	2	2	1	8	0.12	2	16	0.5	4	1	32	1	Ped	the Netherlands	
16-538217	2629	28	20	94	3	1	4	10	0.06	0.25	0.25	0.25	0.5	0.25	0.06	1	1	0.06	0.5	0.25	1	1	Ped	the Netherlands	
16-548984	2685	23	5	7	30	1	4	10	0.06	2	0.5	2	0.5	4	0.06	1	0.5	4	1	4	2	0.5	Ped	Spain	
16-538313	3006	11	5	91	3	83	90	1	0.12	2	0.5	1	0.5	2	0.12	2	1	1	1	0.25	2	1	Adult	the Netherlands	
16-538315	3006	11	5	91	3	83	90	1	0.06	2	0.5	1	0.25	2	0.12	1	1	0.5	1	0.25	2	1	Adult	the Netherlands	
16-537365	3159	5	3	57	3	1	33	189	2	128	4	2	0.5	4	2	16	257	1	64	1	129	1	Adult	Spain	
16-537390	3160	6	4	26	5	1	4	26	0.12	16	2	8	0.5	8	0.25	1	2	0.25	16	4	64	0.5	Adult	Spain	
16-543354	3161	89	30	9	26	48	24	32	0.5	0.5	1	0.25	1	0.25	0.12	0.5	0.5	0.5	4	2	32	1	Ped	Northern Ireland	
16-543368	3161	89	30	9	26	48	24	32	0.12	4	0.5	1	0.5	1	0.25	4	0.5	2	1	0.25	2	0.5	Adult	Northern Ireland	
16-547185	3163	6	5	1	72	15	18	3	0.06	2	2	2	1	4	0.12	1	8	0.5	2	1	4	4	Adult	the Netherlands	
16-540825	3164	40	5	11	197	4	13	7	0.25	128	257	8	32	257	32	64	257	32	32	64	32	4	Adult	the Netherlands	
16-537444	3166	16	5	26	3	4	4	26	0.03	0.25	2	0.5	1	0.25	0.06	0.12	0.25	0.03	1	8	4	1	Adult	Spain	

16-543335	3167	16	5	5	3	3	12	26	0.06	2	2	0.5	0.25	2	1	16	0.5	1	1	0.25	4	16	Adult	Northern Ireland
16-547169	3169	40	5	30	61	1	7	263	2	16	16	4	0.5	128	8	16	8	2	2	0.5	8	0.5	Adult	the Netherlands
16-547183	3170	173	5	5	363	3	13	9	0.12	8	8	16	1	64	2	1	128	0.5	1	0.5	4	2	Adult	the Netherlands
16-548987	3171	11	5	1	7	3	56	264	0.25	4	1	1	0.25	4	0.06	1	0.5	2	8	1	8	1	Adult	the Netherlands
16-555922	3172	11	5	1	7	9	4	262	0.12	32	64	2	1	256	16	32	256	8	8	2	16	2	Adult	the Netherlands
16-555928	3173	6	5	36	222	4	30	2	0.12	8	0.5	0.25	0.25	1	0.06	1	0.5	8	128	64	129	17	Adult	the Netherlands
16-543360	3174	6	5	11	3	4	3	1	1	4	256	4	2	64	16	8	256	8	32	32	64	8	Adult	Northern Ireland
16-540895	3175	5	291	25	88	1	1	42	0.03	2	1	2	0.5	4	0.25	2	8	2	0.5	0.12	0.5	0.5	Ped	the Netherlands
16-538337	3176	28	5	11	77	73	12	10	0.06	16	4	4	1	8	0.12	0.25	16	16	2	0.5	8	1	Adult	the Netherlands
16-538335	3177	28	5	11	77	1	12	92	0.03	16	2	2	0.5	8	16	8	8	2	0.25	0.12	0.5	1	Adult	the Netherlands
16-537367	3178	28	10	12	3	3	4	185	0.12	16	1	2	1	4	4	4	4	0.25	4	1	16	1	Adult	Spain
16-538222	3179	39	5	36	3	4	29	2	0.12	2	4	1	1	1	0.12	0.25	1	1	32	2	64	0.5	Ped	the Netherlands
16-538215	3180	40	22	1	11	4	13	7	0.25	2	0.5	1	0.5	2	0.5	2	4	1	4	1	8	1	Ped	the Netherlands
16-537487	3181	41	5	1	7	11	4	112	0.5	4	1	1	0.5	0.5	0.5	4	0.5	1	32	4	64	1	Adult	Spain
16-537511	3181	41	5	1	7	11	4	112	0.25	2	0.5	0.5	0.5	0.25	0.25	4	0.5	1	32	4	32	0.5	Adult	Spain
16-537335	3183	5	1	65	e	10	7	23	0.06	0.5	0.5	0.25	0.25	0.25	0.06	1	0.25	0.5	129	32	8	0.5	Ped	Spain
16-538187	xx	39	5	20	5	1	6	abs	0.12	16	16	1	1	128	2	4	4	1	4	1	4	0.5	Ped	the Netherlands
16-538188	xx	39	5	20	5	1	6	abs	0.12	32	32	4	1	256	2	8	16	2	8	1	16	0.5	Ped	the Netherlands
16-555916	yy	39	5	9	11	abs	5	2	0.12	64	257	4	2	4	8	32	257	8	128	64	129	1	Adult	the Netherlands