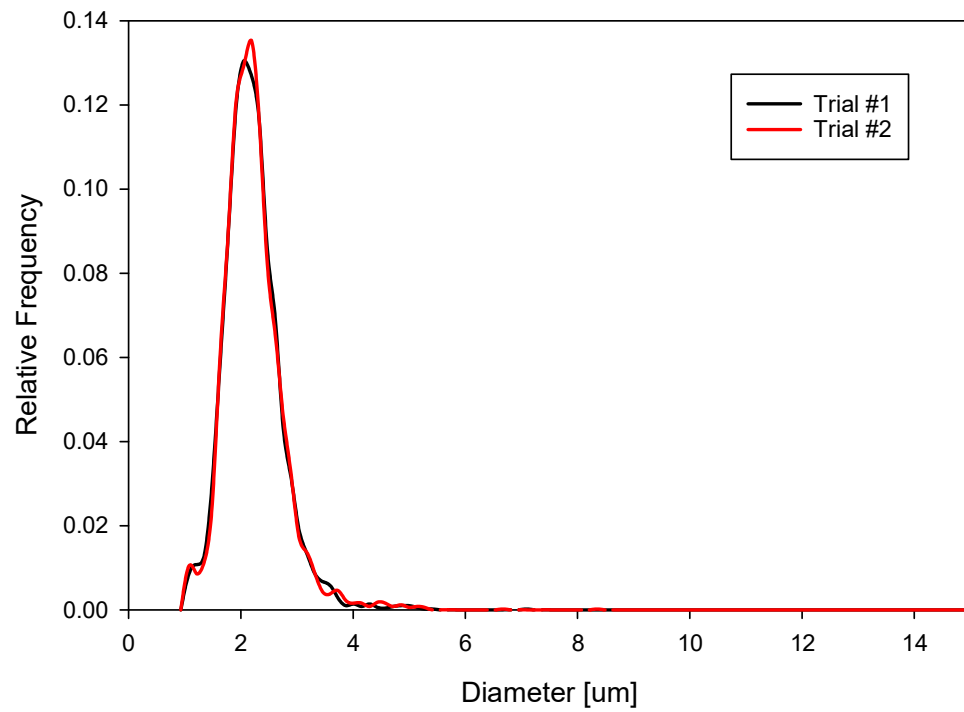
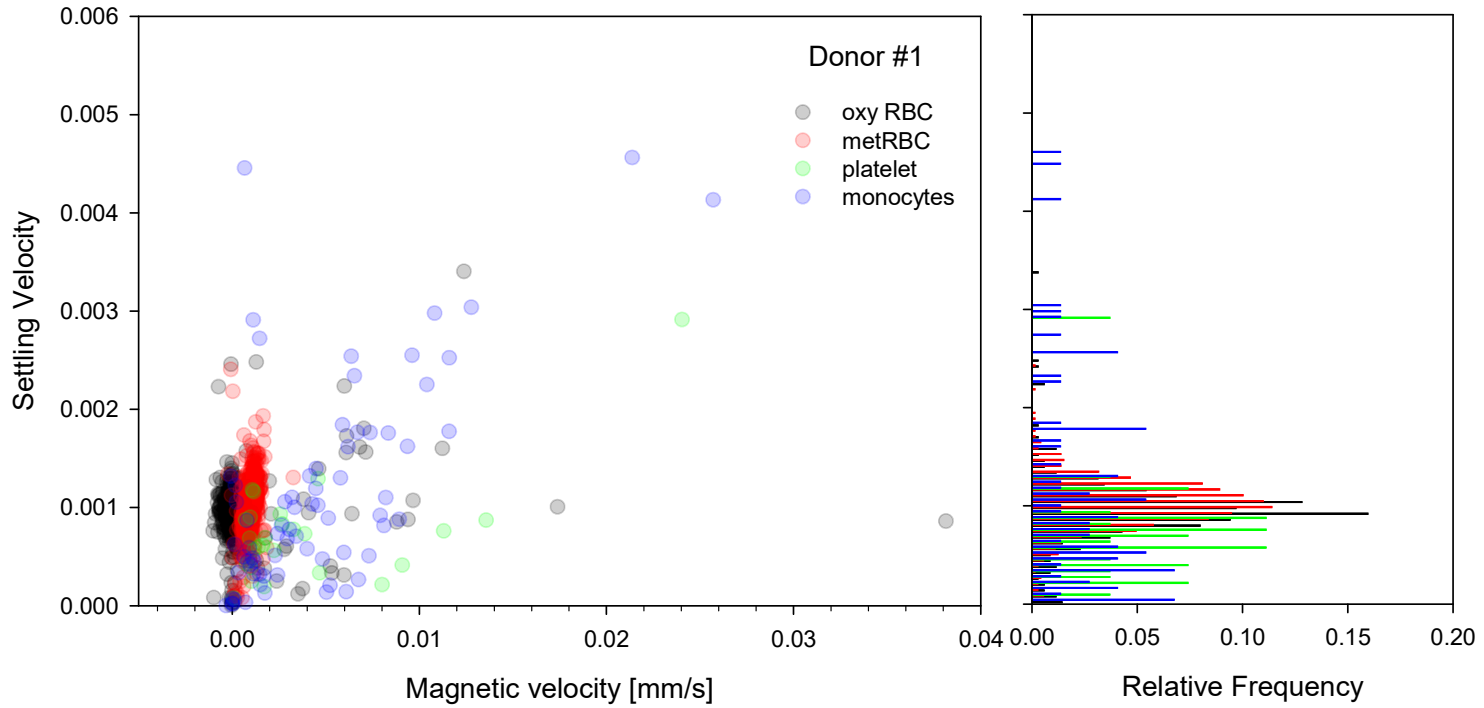
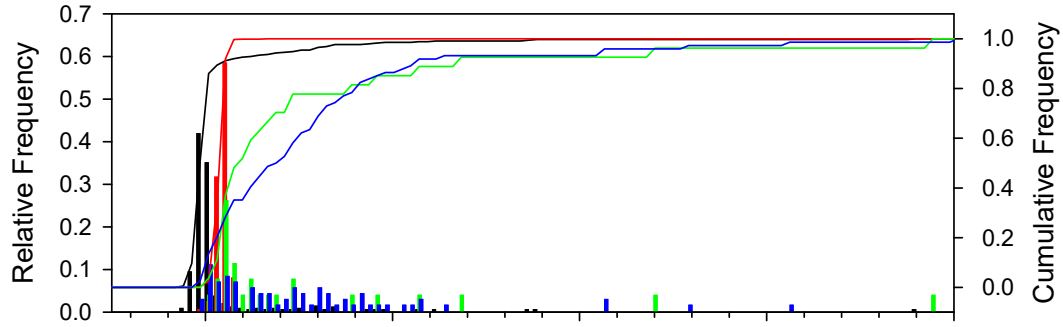


Scatter plot of Magnetic velocity vs. Settling velocity of platelets isolated by RegenKit BCT centrifuge tubes from one of the donors. Their magnetic velocities are clustered around 0

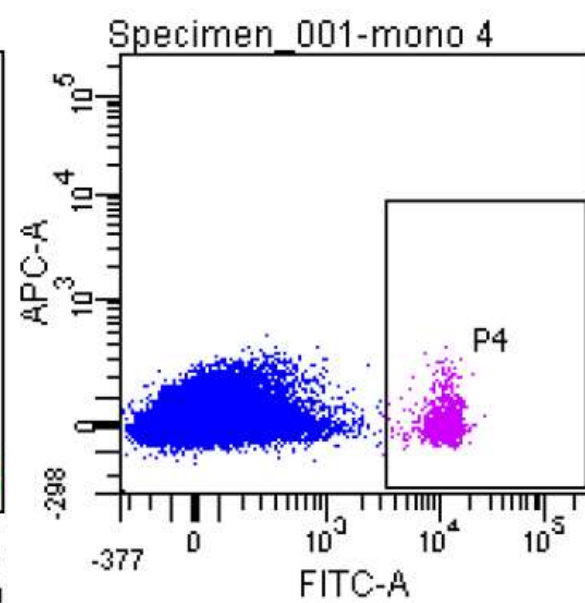
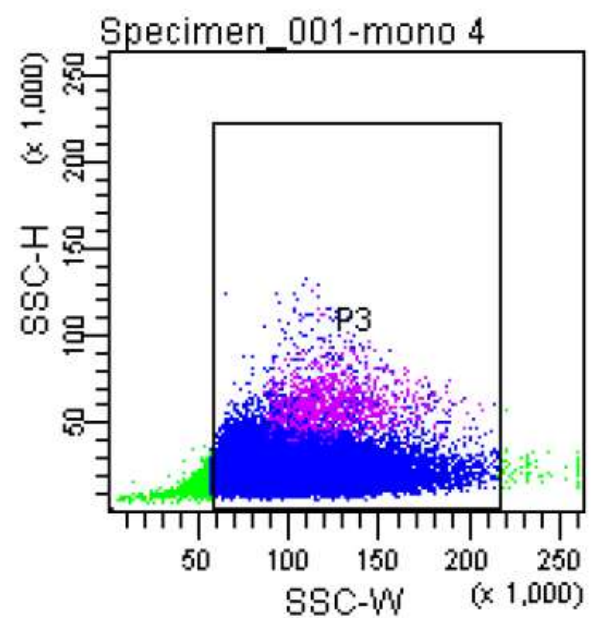
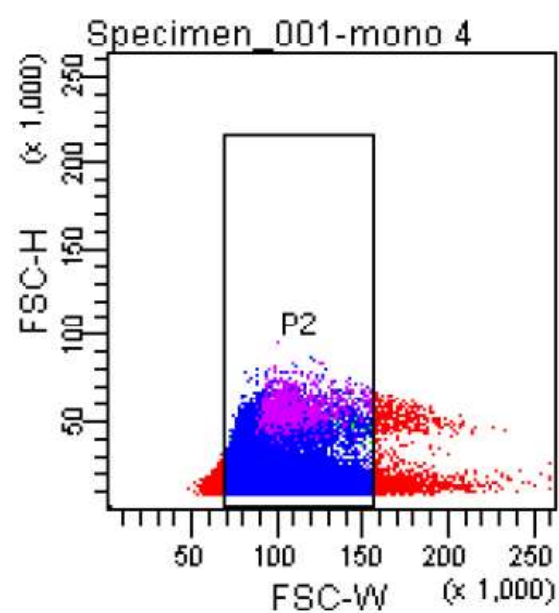
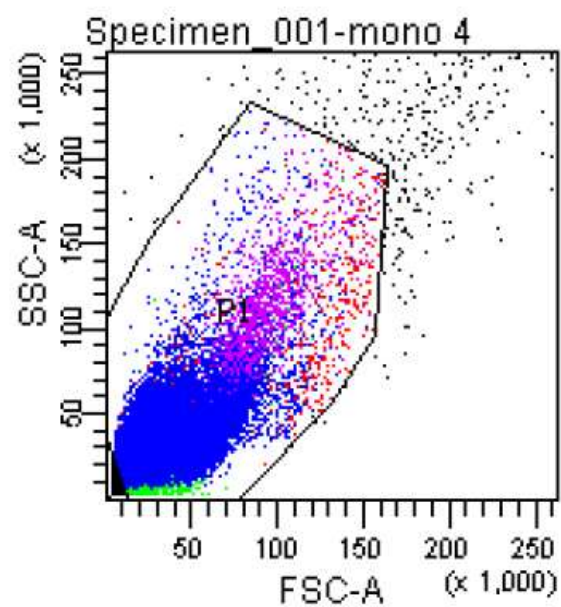


Size distribution [um] of the RegenKit BCT centrifuge tubes separated platelets.

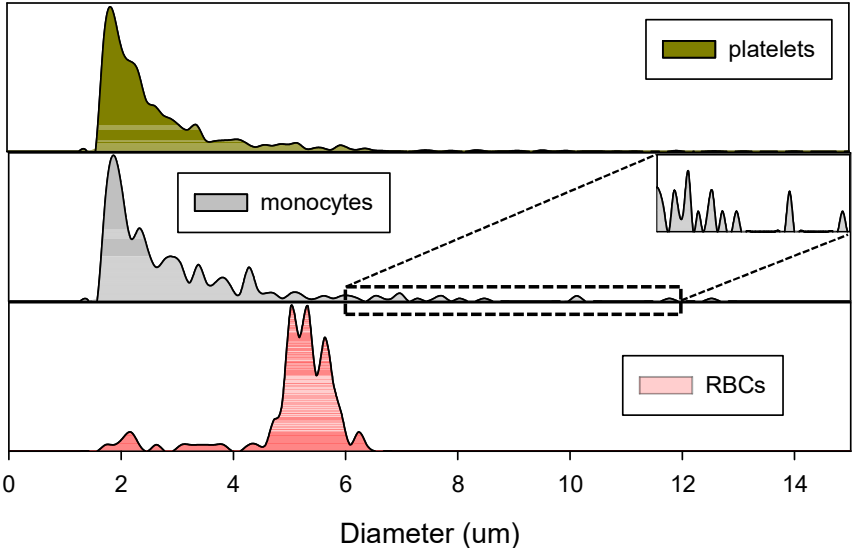
Donor 1



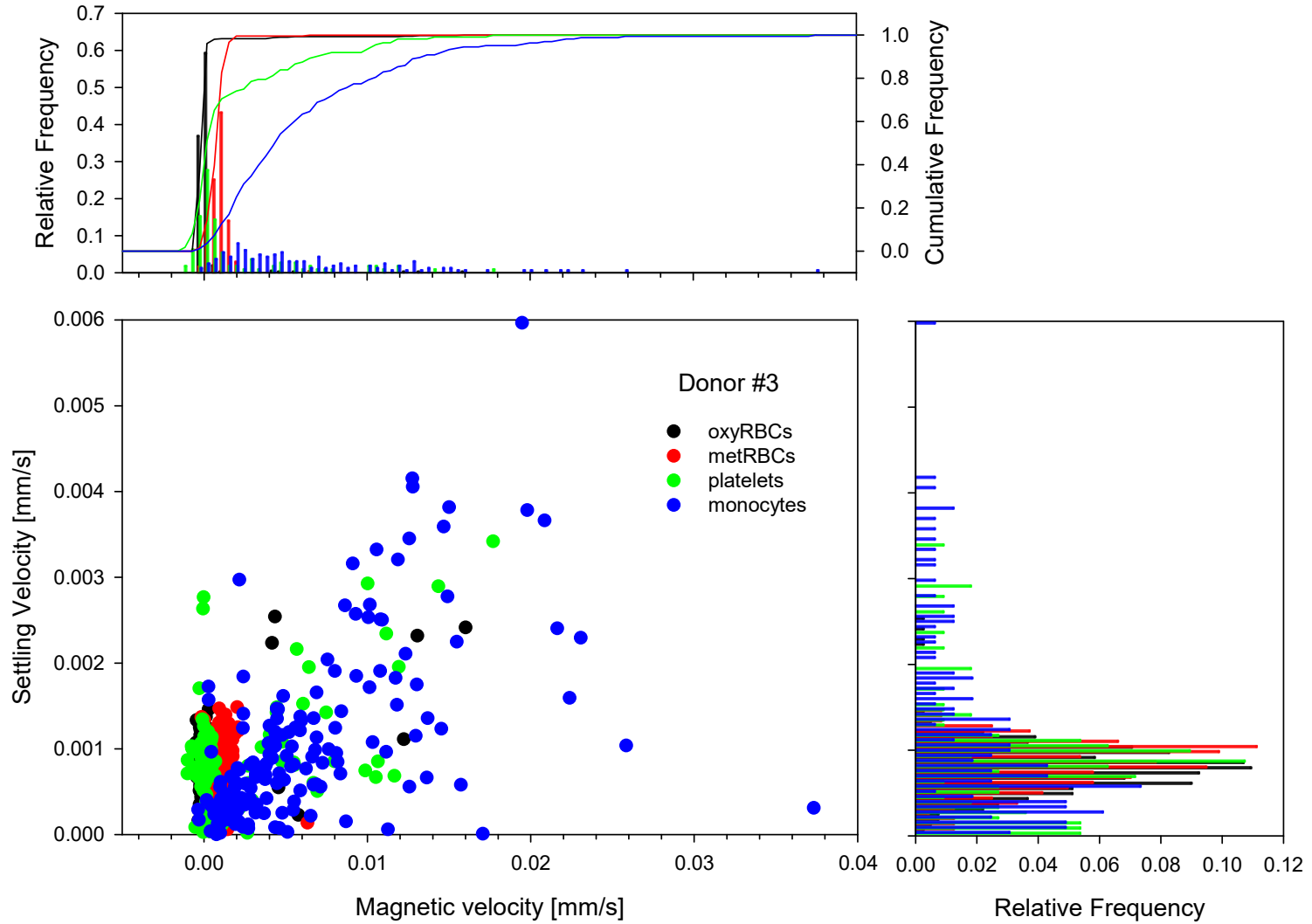
Donor 1



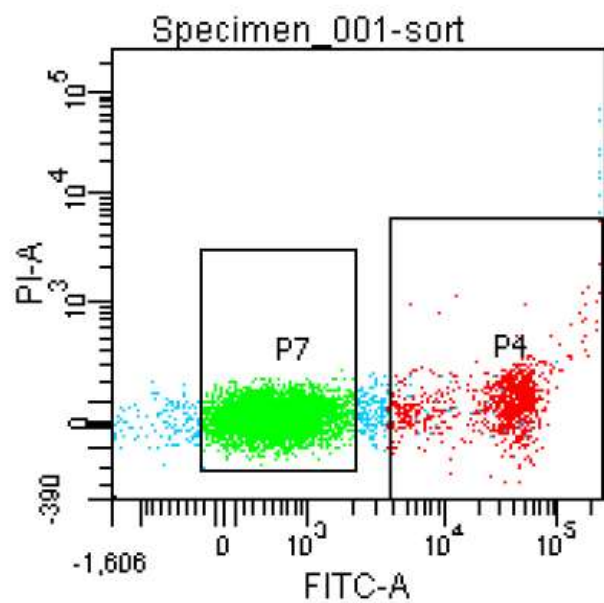
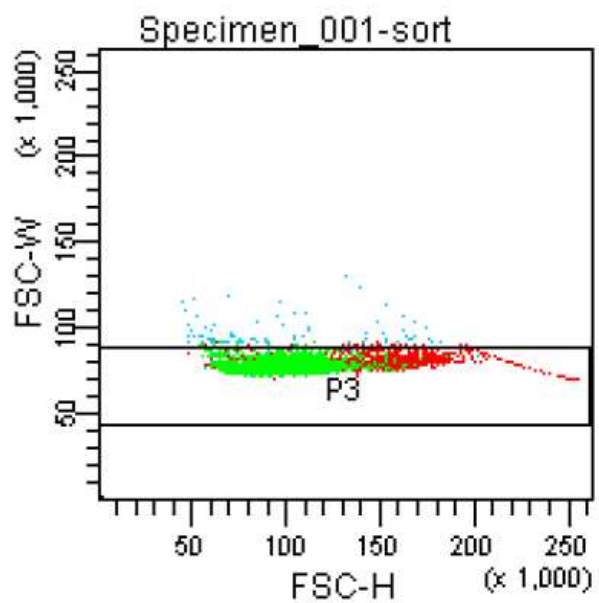
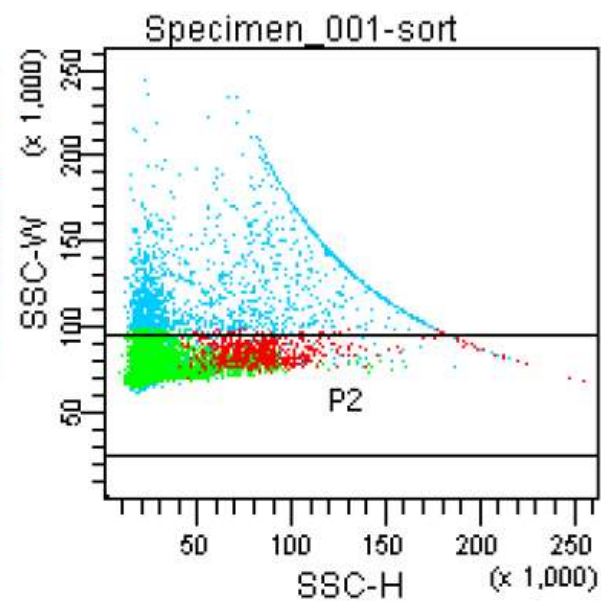
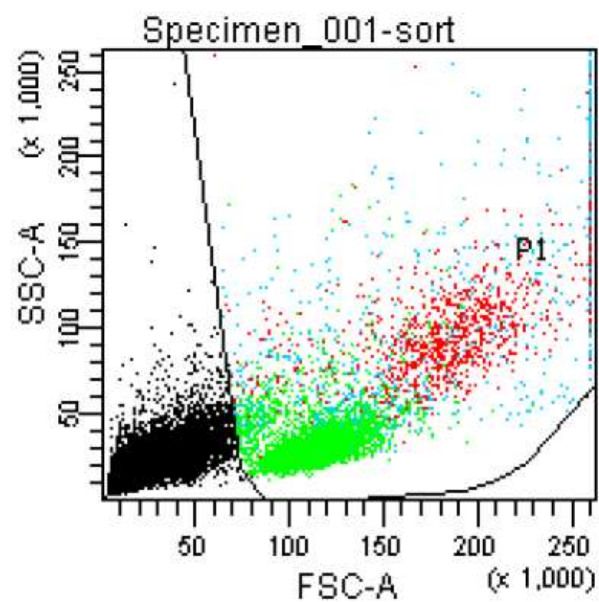
Donor 1



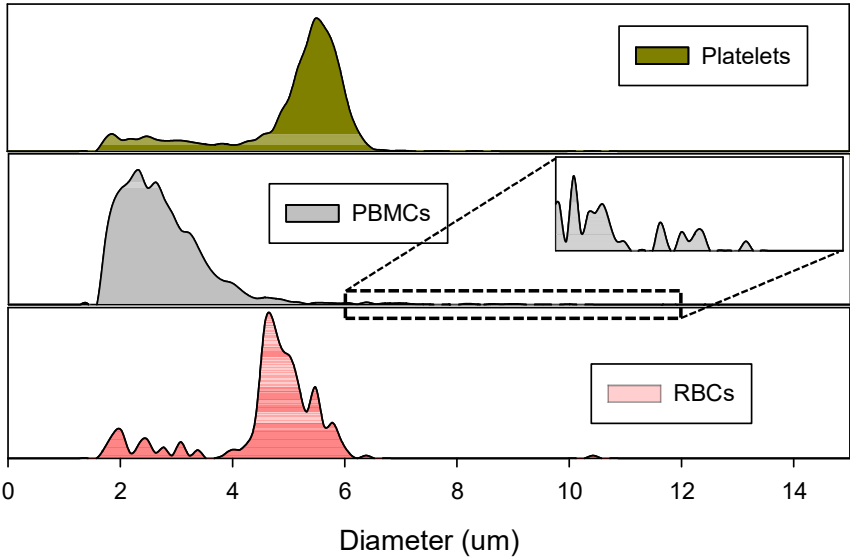
Donor 3



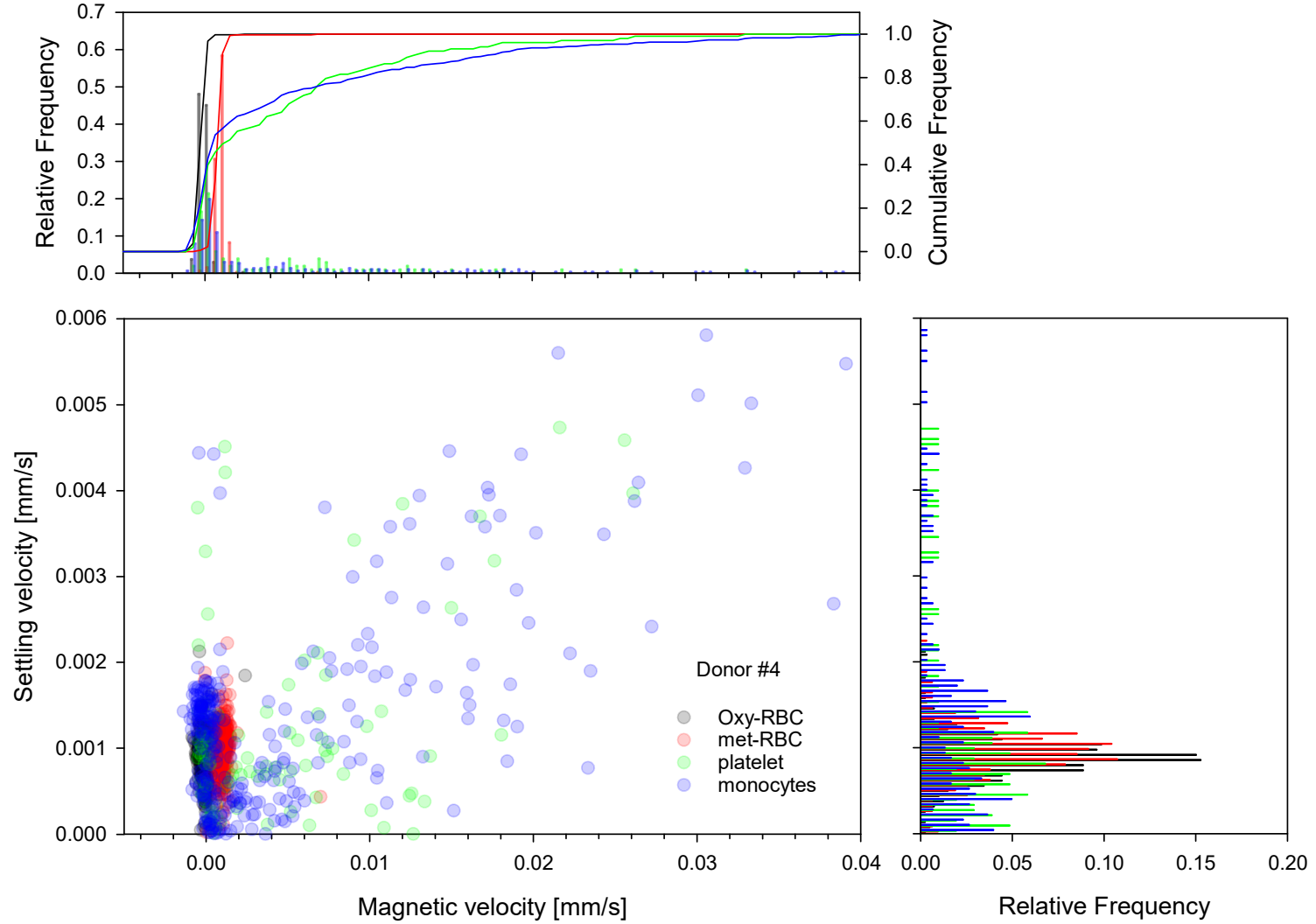
Donor 3



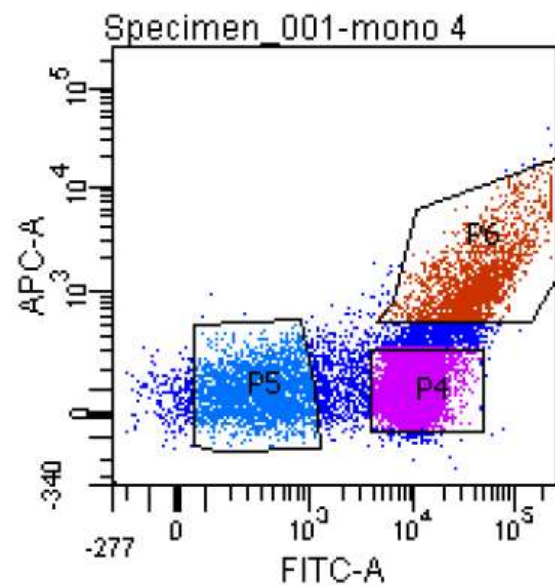
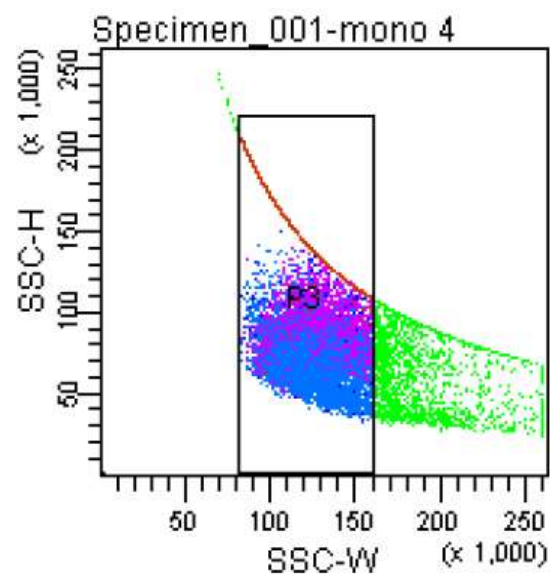
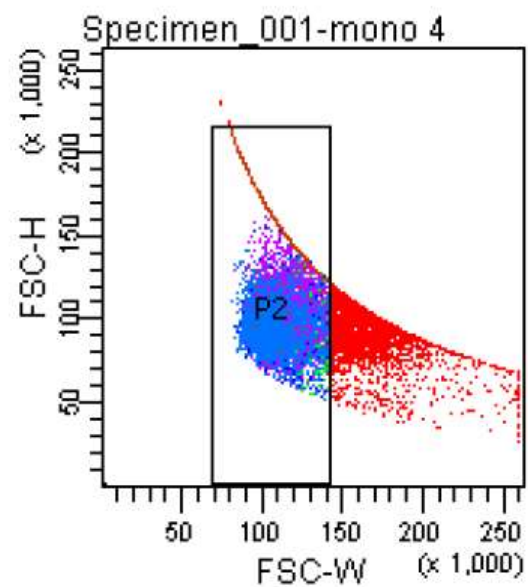
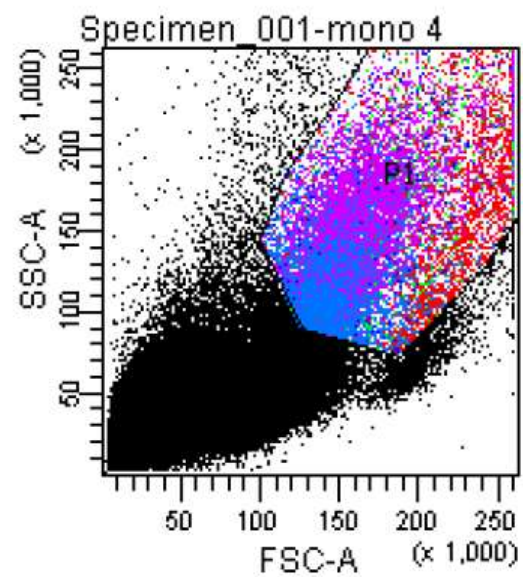
Donor 3



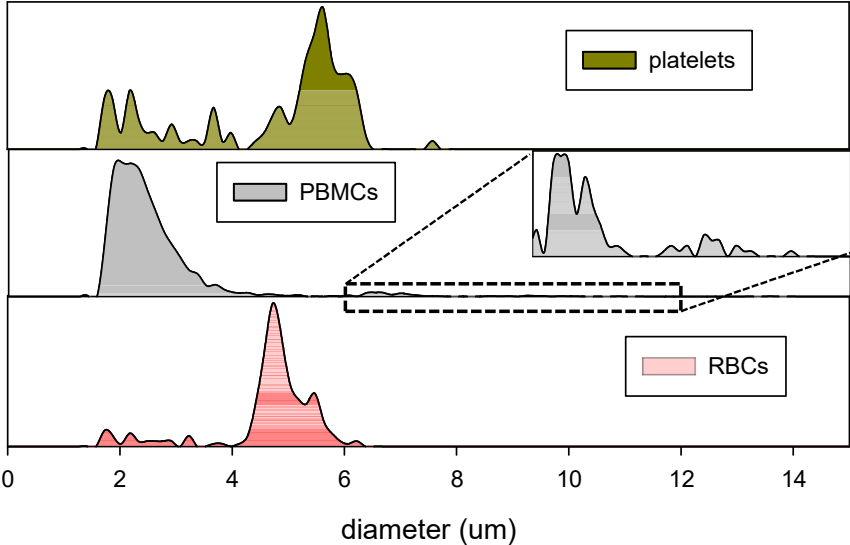
Donor 4



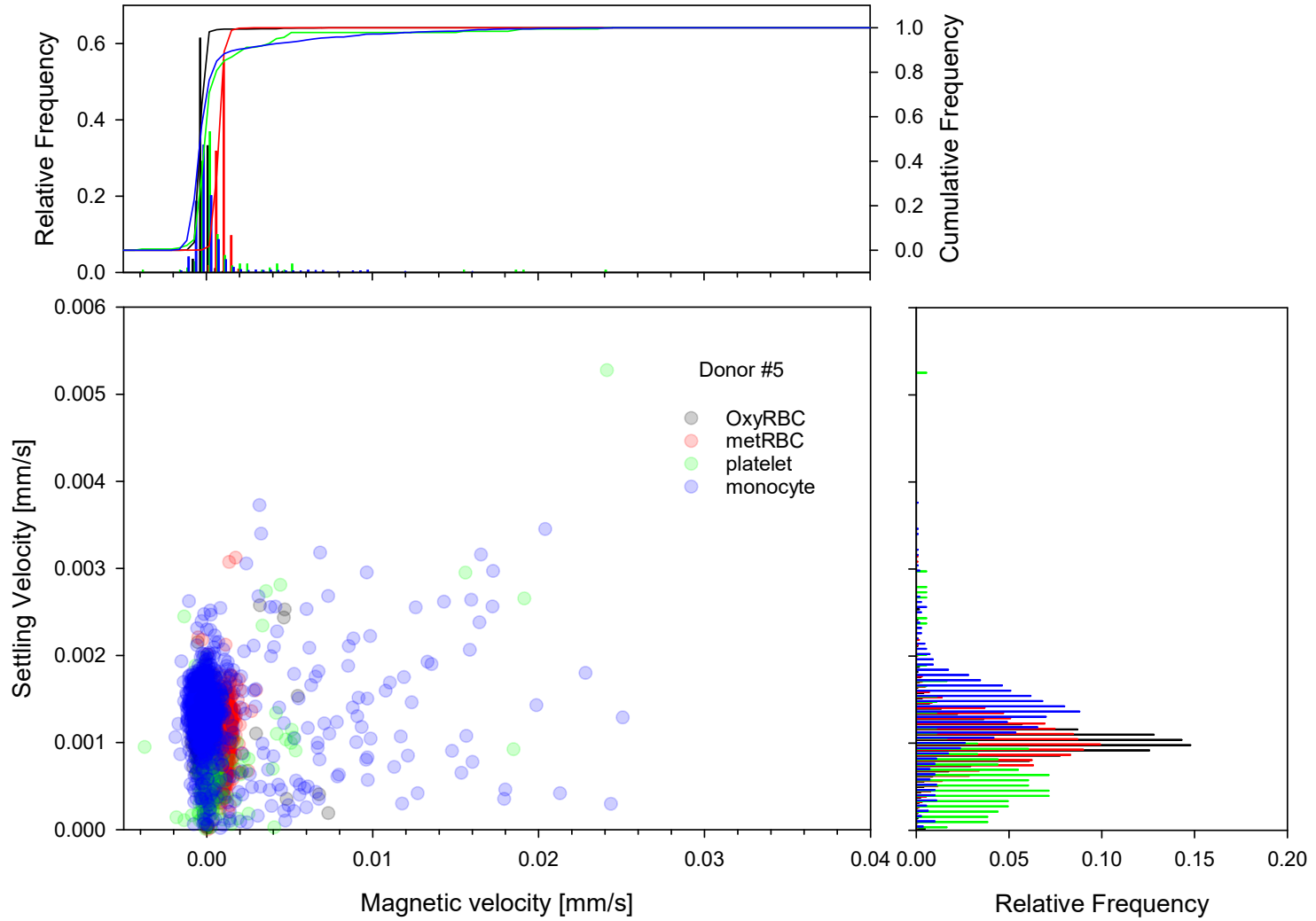
Donor 4



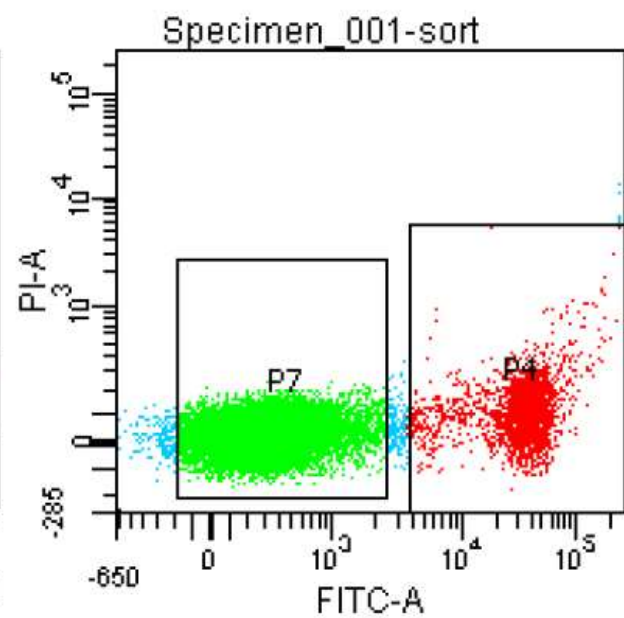
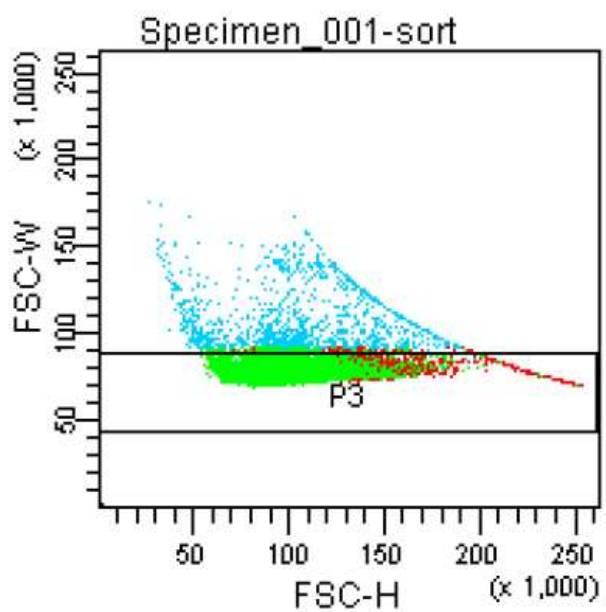
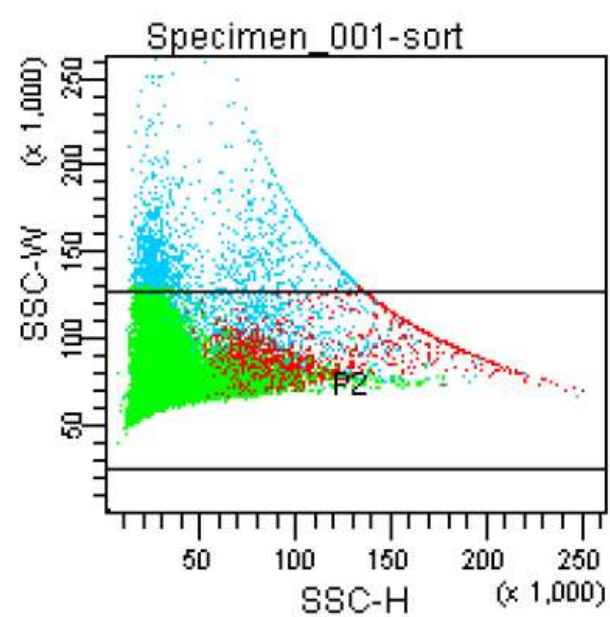
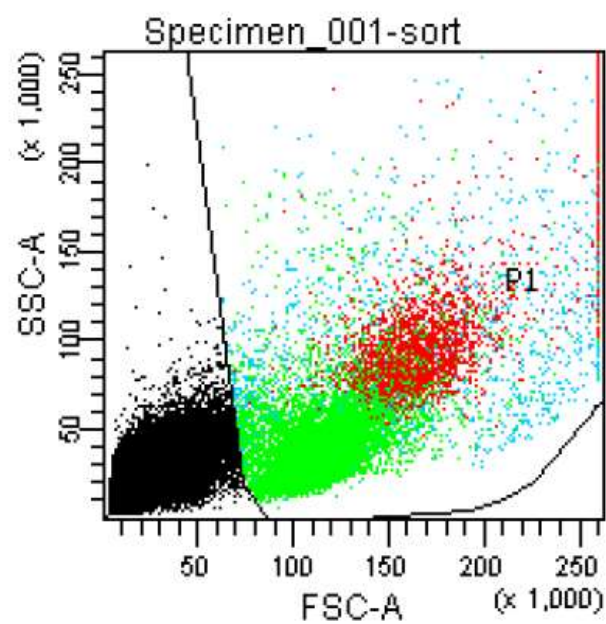
Donor 4



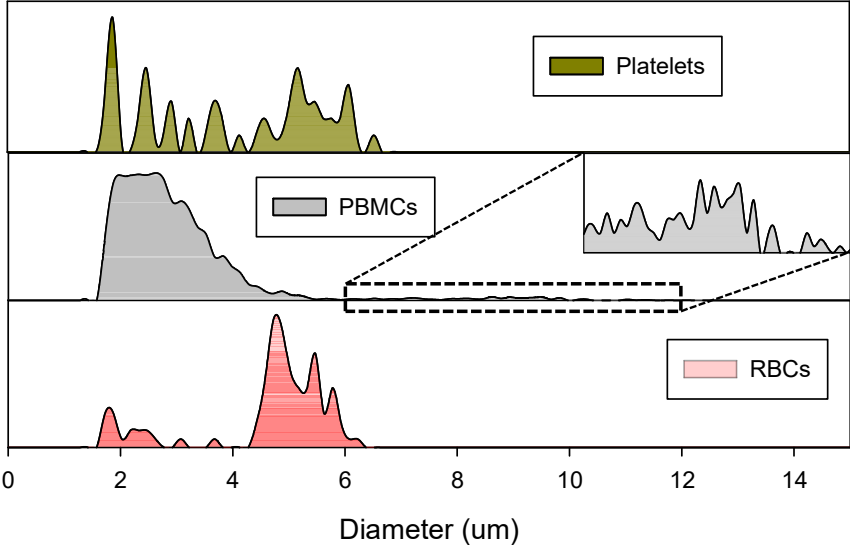
Donor 5



Donor 5



Donor 5



Cytometry Part A
Author Checklist: MIFlowCyt-Compliant Items

Requirement	Please Include Requested Information
1.1. Purpose	Separate out monocytes from fresh blood
1.2. Keywords	Monocyte, platelets, RBCs, magnetic susceptibility, cell tracking velocimetry, imaging cytometer
1.3. Experiment variables	Donor to Donor
1.4. Organization name and address	William G. Lowrie Department of Chemical and Biomolecular Engineering, Ohio State University, 151 W. Woodruff Ave., Columbus, OH 43210
1.5. Primary contact name and email address	Jeffrey Chalmers, chalmers.1@osu.edu
1.6. Date or time period of experiment	12/4/2018-12/18/2018
1.7. Conclusions	We were able to successfully separate out monocytes.
1.8. Quality control measures	BD calibration beads
2.1.1.1. (2.1.2.1., 2.1.3.1.) Sample description	Whole Blood
2.1.1.2. Biological sample source description	Healthy blood donors
2.1.1.3. Biological sample source organism description	Human
2.1.2.2. Environmental sample location	N/A
2.3. Sample treatment description	N/A
2.4. Fluorescence reagent(s) description	Alexa Fluor® 488 Mouse Anti-Human CD14
3.1. Instrument manufacturer	BD Bioscience
3.2. Instrument model	FACS ARIA II
3.3. Instrument configuration and settings	Default
4.1. List-mode data files	1) The link for peer-review process: http://flowrepository.org/id/RvFr8RBMbaGOQWwLk4MjauVEsHjxDfpEaJNh3pa1Rh1JyUZqEQXuA6S1stEXpgM 2) The repository identifier: http://flowrepository.org/id/FR-FCM-ZYVZ
4.2. Compensation description	N/A
4.3. Data transformation details	N/A
4.4.1. Gate description	N/A
4.4.2. Gate statistics	N/A
4.4.3. Gate boundaries	N/A