

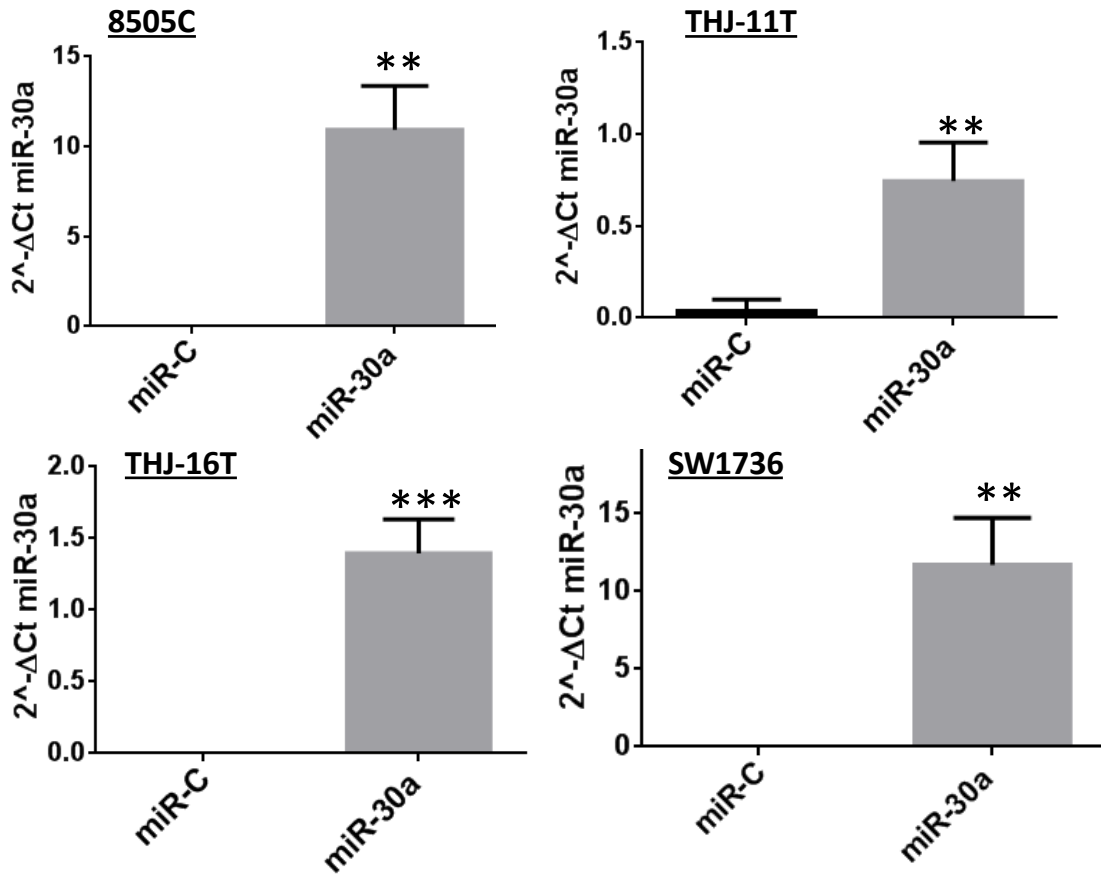
Supplementary material

Supplementary Figure 1 RT-PCR assay for miR-30a expression in transfected cells by miR-30a mimic and its corresponding control.

Supplementary Figure 2. Images for each cell line shows cells that penetrated the Matrigel (invasion) and those that penetrated the insert's membrane (migration). 72 hours after transfection with miR-30a **(A)**. LOX inhibition reduces cellular migration and invasion in ATC cell lines. Transwell migration and invasion assays were performed after 24 hours of treatment with and without 100 μ M BAPN **(B)**.

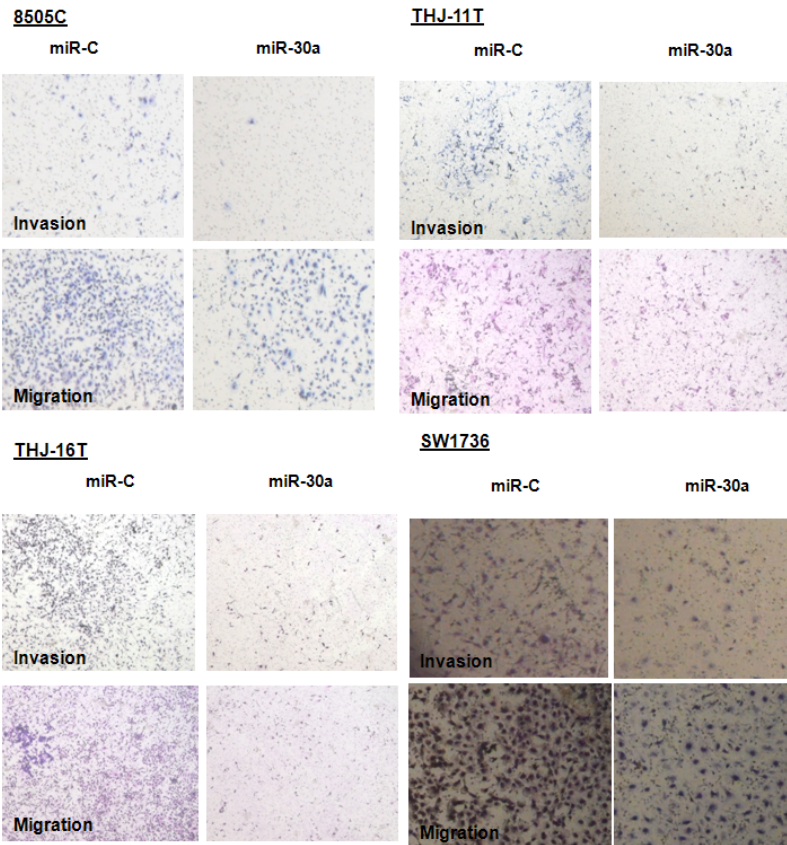
Supplementary Figure 3. A, Effect of LOX inhibition on metastasis *in vivo*. Treatment of mice before and after tail vein injection with 8505c cells reduced metastasis *in vivo*. BAPN treatment was initiated either 24 hours before (upper panel, four mice) or after (lower panel, four mice) tail vein injection. On the left are representative tumor luminescence images of untreated and BAPN-treated mice. **B,** Representative images of cellular migration and invasion in ATC cell lines transfected with siLOX.

Supplemental figure 1

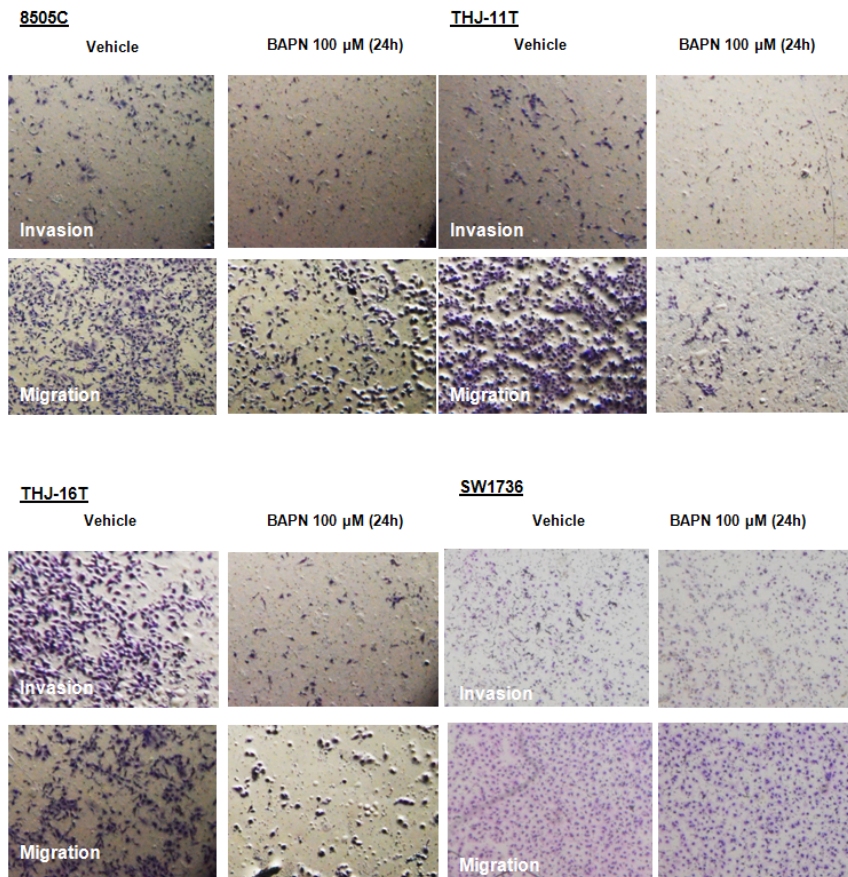


Supplementary Figure 2

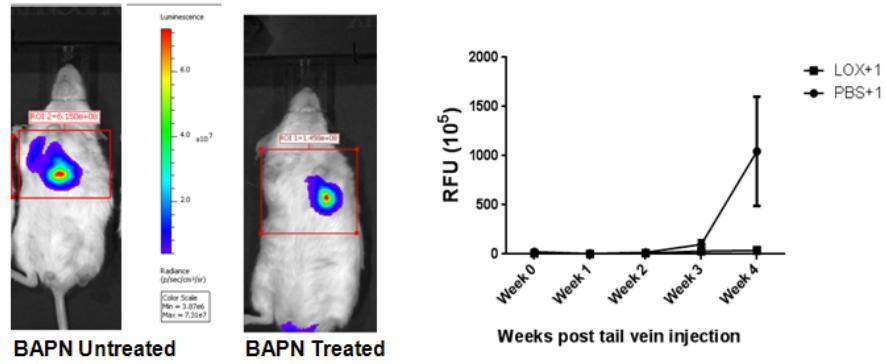
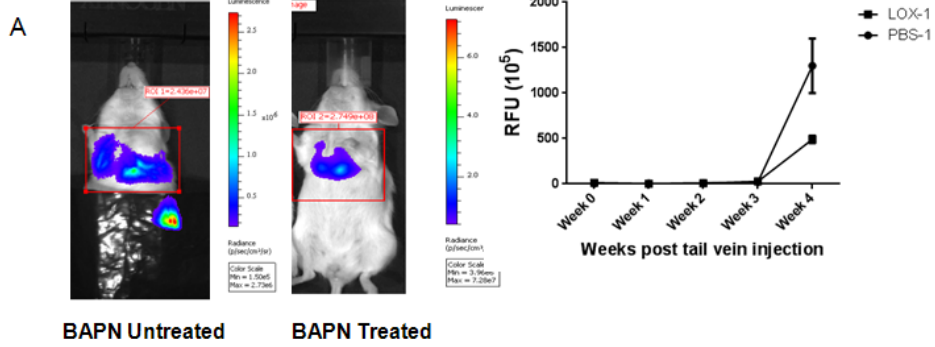
A



B

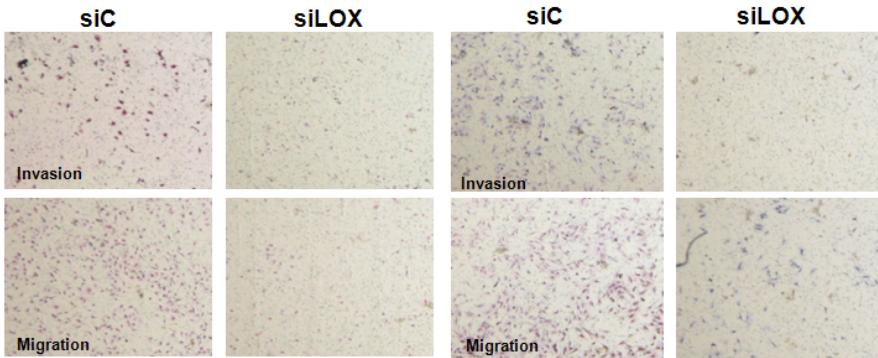


Supplementary Figure 3

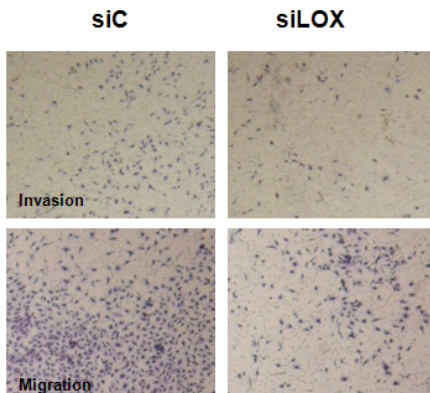


B

8505C



THJ-16T



SW1736

