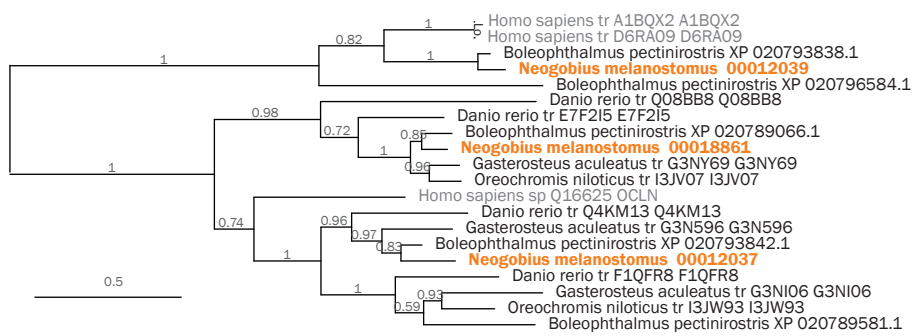


Supplemental\_Fig\_S5  
The round goby genome



Phylogenetic tree of vertebrate occludin genes. Maximum-likelihood tree with 100 bootstraps of round goby (*Neogobius melanostomus*, orange) in relation to great blue-spotted mudskipper (*Boleophthalmus pectinirostris*), stickleback (*Gasterosteus aculeatus*), Nile tilapia (*Oreochromis niloticus*), zebrafish (*Danio rerio*), and human (*Homo sapiens*, grey).