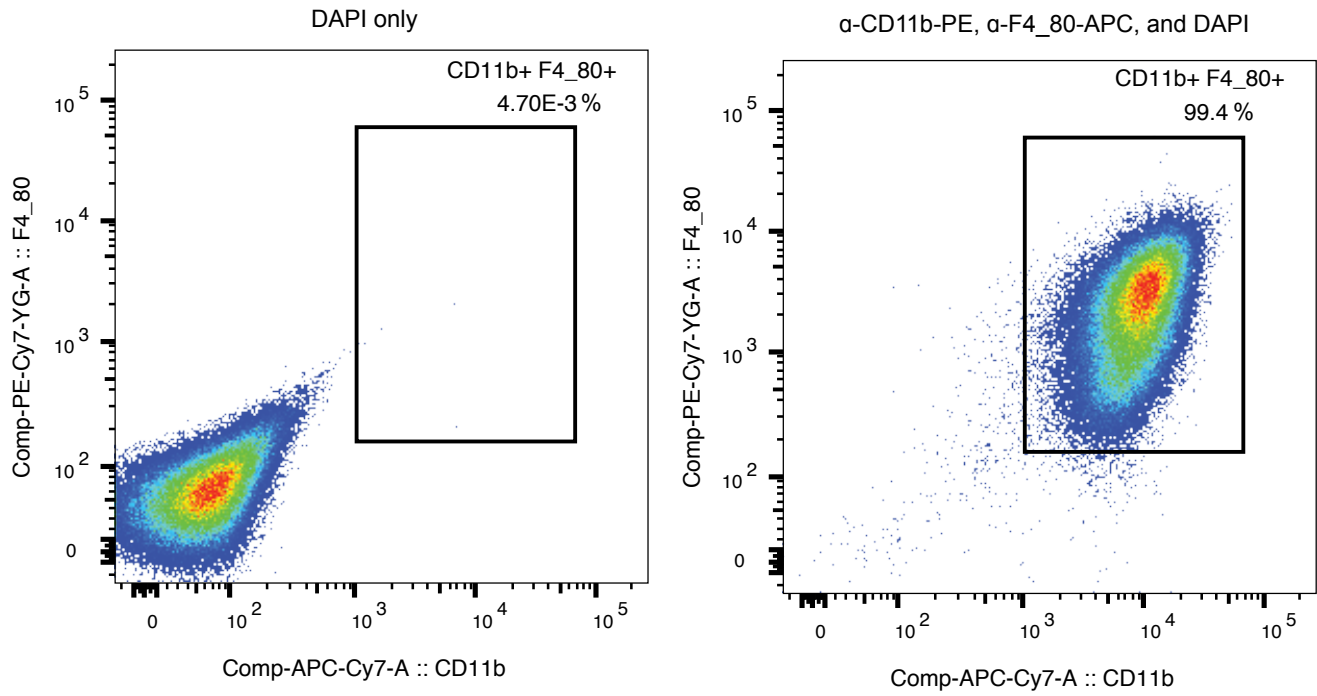


Supplementary Fig. 1



Supplementary Fig 1. Flow cytometry to phenotypically determine the percentage of CD11b(+)/F4/80(+) macrophages. Graphs plot fluorescence intensity of F4_80 (y-axis) and CD11b (x-axis) for (left, negative control) cells stained with DAPI only to label cellular DNA or (right) cells stained with anti-CD11b-PE, anti-F4_80-APC and DAPI (n = 1).