

Supplemental Figure S1:

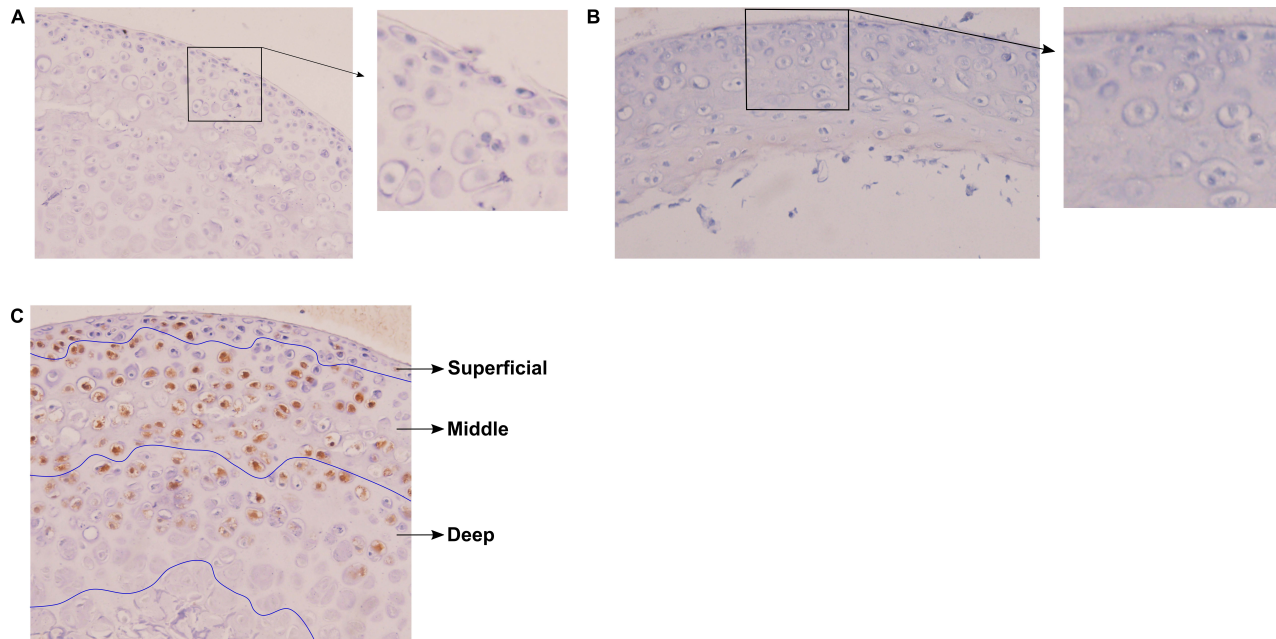


Figure S1. Negative controls for tdTomato IHC and demarcation of chondrocyte zones. *A)* No primary control. No tdTomato primary antibody was used on this section, which was done on the same slide as the representative tdTomato IHC staining shown in Figure 2A. *B)* No $p16^{tdTom}$ allele control. Cartilage explants from wild type mice were cultured in senescence-inducing conditions and analyzed for the presence of background tdTomato staining by IHC. *C)* The zones of cartilage were identified by cellular morphology to aid in counts of the percentage of $p16^{tdTom}$ -positive cells. This example shows the zones as defined for the IHC image in Figure 2A.