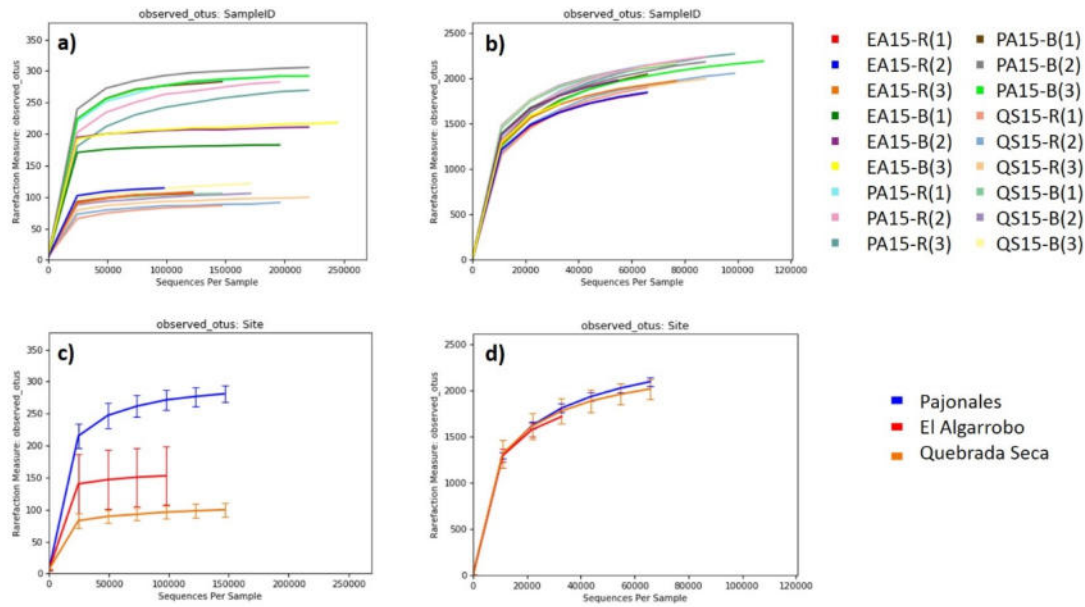


1 Supplementary figures



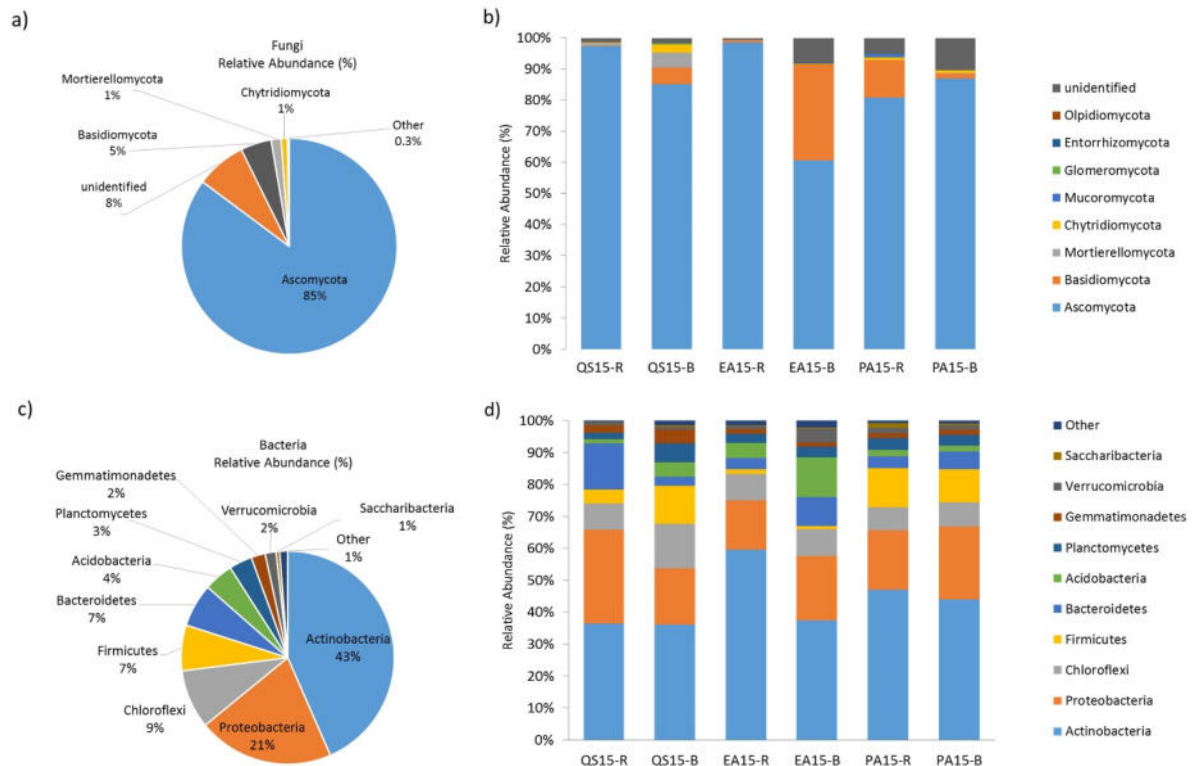
2

3 Figure S1: Rarefaction curves: analysis per sample type and locality. a) N. of fungal OTUs per
 4 sample; b) N. of prokaryotic OTUs per sample; c) N. of fungal OTUs per locality; d) N. of
 5 prokaryotic OTUs per locality.

6 Abbr. of sampling sites: QS – Quebrada Seca, EA – El Algarrobo, PA – Pajonales

7

8



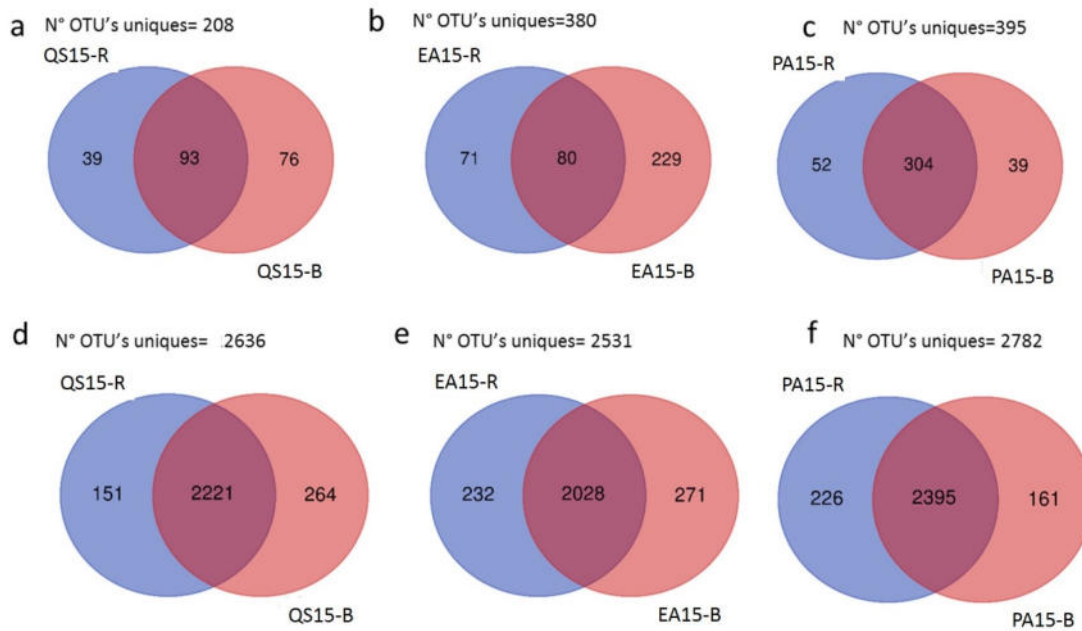
9

10 Figure S2: Taxonomic composition and relative abundance (%) at phylum level: analysis per
 11 locality and sample type (rhizosphere (R) and bulk soil (B)). a) Total relative abundance fungi
 12 (n=18); b) Relative abundance for fungi as average per locality and sample type (n=3); c) Total
 13 relative abundance prokaryotes (n=18); d) Relative abundance for prokaryotes as average per
 14 locality and sample type (n=3). Relative abundance shown in b and d corresponding to $\geq 0.5\%$.

15 Abbr. of sampling sites: QS – Quebrada Seca, EA – El Algarrobo, PA – Pajonales

16

17

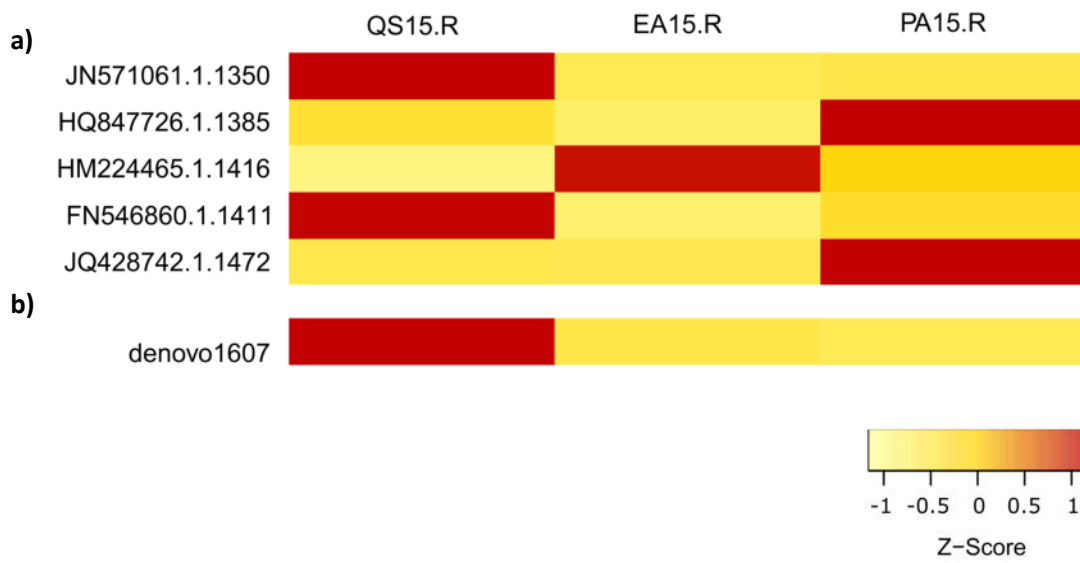


19

20 Figure S3: Venn diagrams comparing the number of exclusive OTUs of rhizosphere and bulk soil
 21 samples. a) fungi, locality Quebrada Seca (QS); b) fungi, locality El Algarrobo (EA); c) fungi,
 22 locality Pajonales (PA); d) procaryotes, locality Quebrada Seca; e) procaryotes, locality El
 23 Algarrobo; f): procaryotes, locality Pajonales.

24

25



26

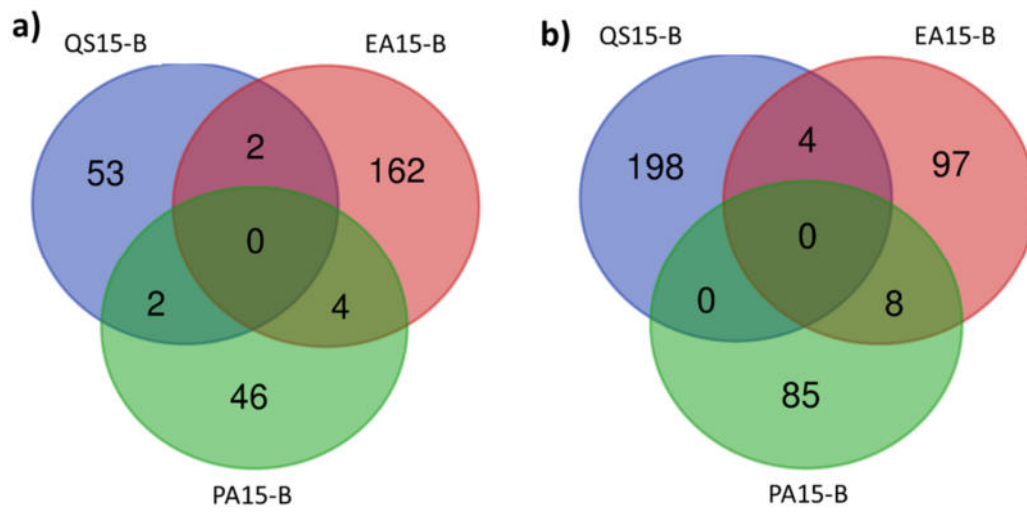
27 Figure S4: Heatmap of relative abundance for the core microbiome. a) prokaryotes; b) fungi.

28 Abbr. of sampling sites: QS15.R – Rhizosphere at Quebrada Seca (year 2015), EA15.R –

29 Rhizosphere at El Algarrobo (year 2015), PA15.R – Rhizosphere at Pajonales (year 2015).

30

31

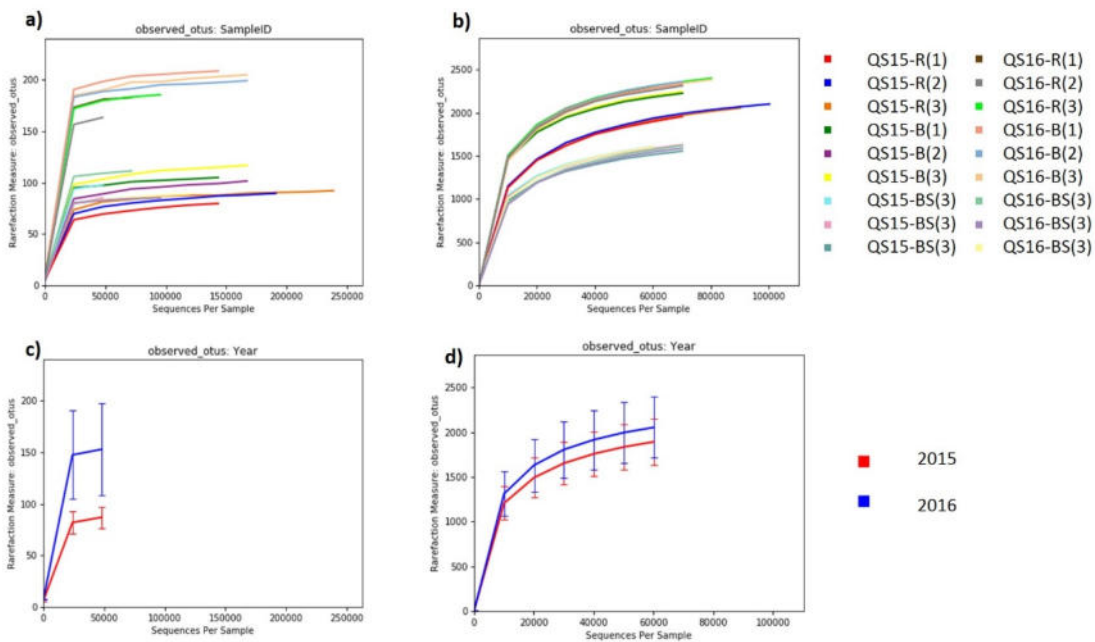


32

33 Figure S5: Venn diagrams comparing the number OTUs enriched in the bulk soil (B) between the
34 localities. a) fungi; b) prokaryotes.

35 Abbr. of sampling sites: QS – Quebrada Seca, EA – El Algarrobo, PA – Pajonales

36

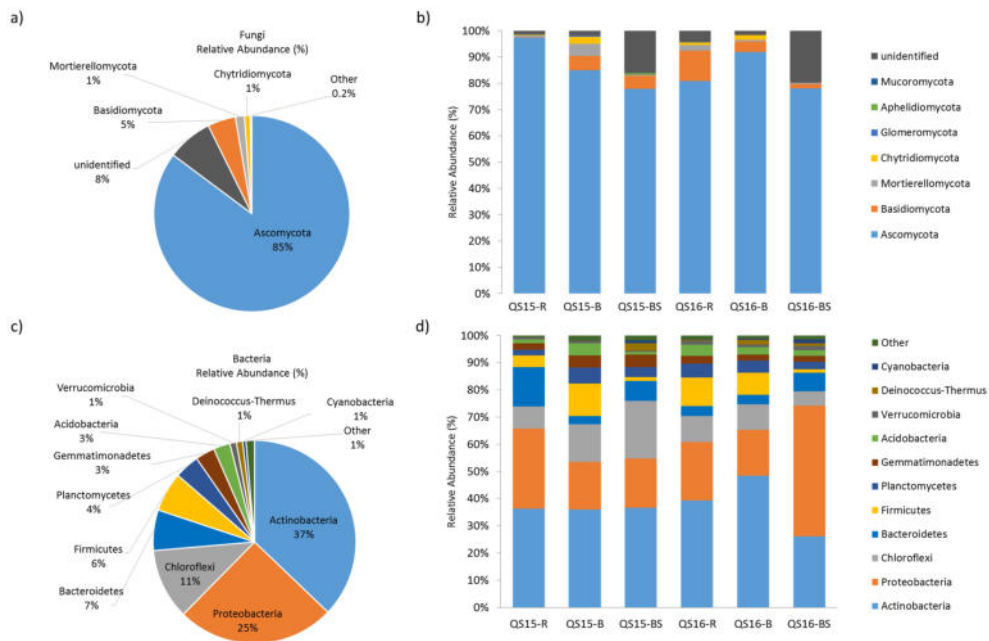


39 Figure S6: Rarefaction curves: analysis per sample type and year at Quebrada Seca (QS). a) Fungi
 40 Sample ID; b) prokaryotes Sample ID; c) N. of fungal OTUs per year; d) N. of prokaryotic OTUs
 41 per year.

42 Abbr. of sample types: rhizosphere (R), bulk soil (B), bare soil (BS)

43

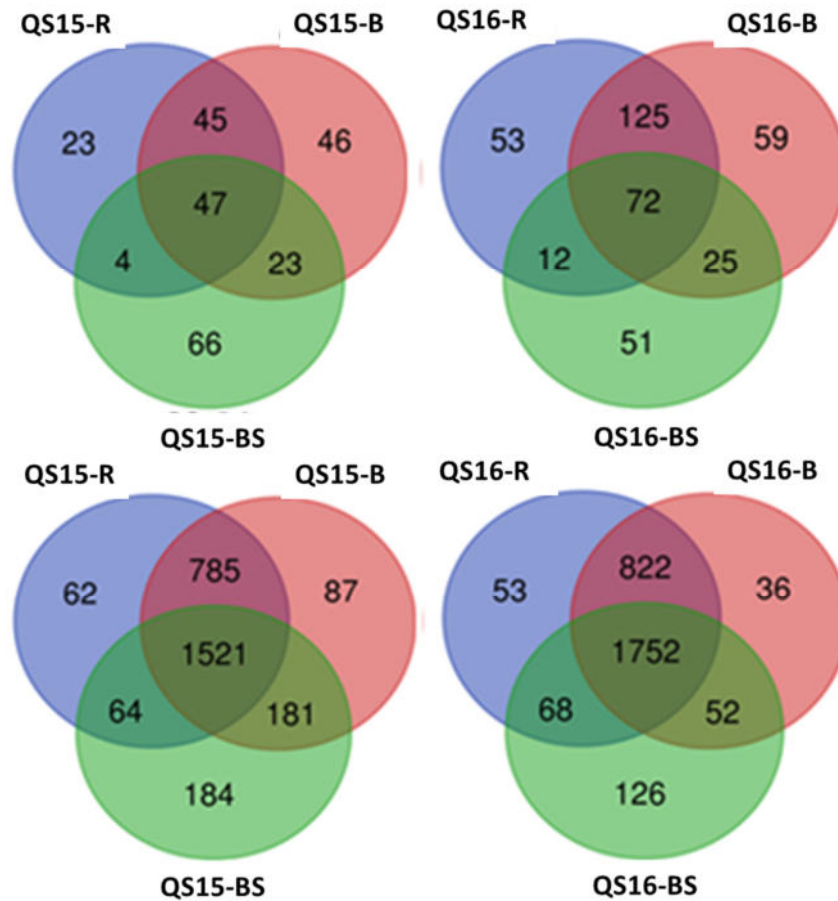
44



45

46 Figure S7: Taxonomic composition and relative abundance (%) at phylum level: comparison
 47 between rainy and dry year at Quebrada Seca (QS; rhizosphere (R), bulk soil (B), bare soil (BS)).
 48 a) Total relative abundance fungi (n=18); b) Relative abundance for fungi as average per locality
 49 and sample type (n=3); c) Total relative abundance prokaryotes (n=18); d) Relative abundance for
 50 prokaryotes as average per locality and sample type (n=3). Relative abundance shown in b and d
 51 corresponding to $\geq 0.5\%$.

52



54

55 Figure S8: Venn diagrams comparing the number OTUs per sample type and year Quebrada Seca

56 (QS). a) fungi rainy year (2015); b) fungi dry year (2016); c) prokaryotes rainy year (2015); d)

57 prokaryotes dry year (2016).

58 Abbr. of sample types: bulk soil (B), bare soil (BS)

59