

Supplementary Online Content

Ji H, Kim A, Ebinger JE, et al. Sex differences in blood pressure trajectories over the life course. *JAMA Cardiol*. Published online January 15, 2020. doi:10.1001/jamacardio.2019.5306

eFigure 1. Study Sampling Strategy

eTable. Baseline Characteristics of the Study Sample

eFigure 2. Sex-Specific Trajectories of Blood Pressure with Aging in Whites

eFigure 3. Sex-Specific Trajectories of Blood Pressure with Aging in Blacks

eFigure 4. Sex-Specific Trajectories of Blood Pressure with Aging, Stratified by Cohort

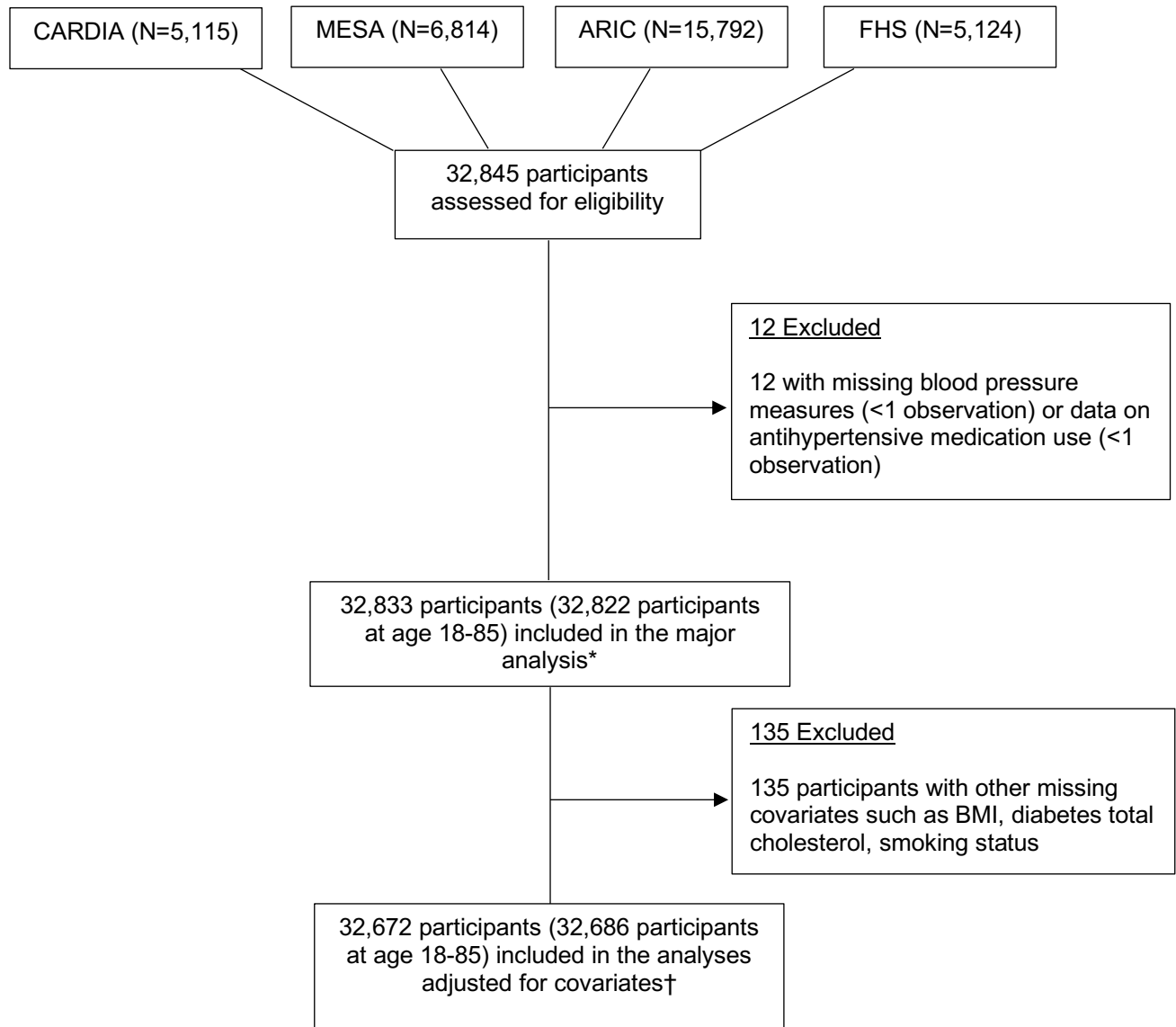
eFigure 5. Sex-Specific Trajectories of Blood Pressure with Aging in Participant-Observations without Concurrent Antihypertensive Medication Use

eFigure 6. Sex-Specific Trajectories of Blood Pressure with Aging in Participant-Observations with Concurrent Antihypertensive Medication Use

eFigure 7. Sex-Specific Trajectories of Blood Pressure with Aging, Using Alternate Approaches to Imputing the Effects of Antihypertensive Therapy

This supplementary material has been provided by the authors to give readers additional information about their work.

Figure S1. Study Sampling Strategy



*Figure 1, Figure 2, and Supplementary Table S1
†Figure 3

Table S1. Baseline Characteristics of the Study Sample

	Overall	ARIC	CARDIA	FHS	MESA
Participants, no.	32833	15786	5113	5120	6814
Age, mean (SD), years	48.4 (14.9)	54.1 (5.7)	24.7 (3.6)	36.3 (10.5)	62.1 (10.2)
Women, %	54.0	55.2	54.5	51.5	52.8
Race/ethnicity, %					
Whites	66.1	72.8	48.4	100.0	38.5
Blacks	26.8	27.0	51.6	0	27.8
Hispanic or Asian	7.2	0.2	0	0	33.8
Systolic BP, mean (SD), mm Hg	124 (20)	127 (20)	113 (11)	122 (17)	130 (23)
Diastolic BP, mean (SD), mm Hg	79 (11)	81 (11)	74 (9)	78 (11)	76 (10)
Mean arterial pressure, mean (SD), mm Hg	94 (13)	96 (13)	87 (9)	93 (12)	94 (13)
Pulse pressure, mean (SD), mm Hg	45 (14)	45 (14)	38 (9)	43 (10)	54 (18)
Antihypertensive therapy, %	23.3	30.7	2.2	3.4	37.2
Current smoker, %*	24.3	26.2	13.2	44.4	13.1
Body mass index, mean (SD), kg/m ² †	26.9 (5.4)	27.7 (5.4)	24.4 (4.8)	25.1 (4.4)	28.3 (5.5)
Diabetes mellitus, %‡	8.8	12.0	0.8	2.0	12.7
Total cholesterol, mean (SD), mg/dl§	202 (42)	215 (42)	177 (33)	199(40)	194 (36)
Incident CVD, n (%)	8130 (24.8)	6155 (39.0)	189 (3.7)	1152 (22.5)	634 (9.3)

*46 participants have missing data on baseline smoking status

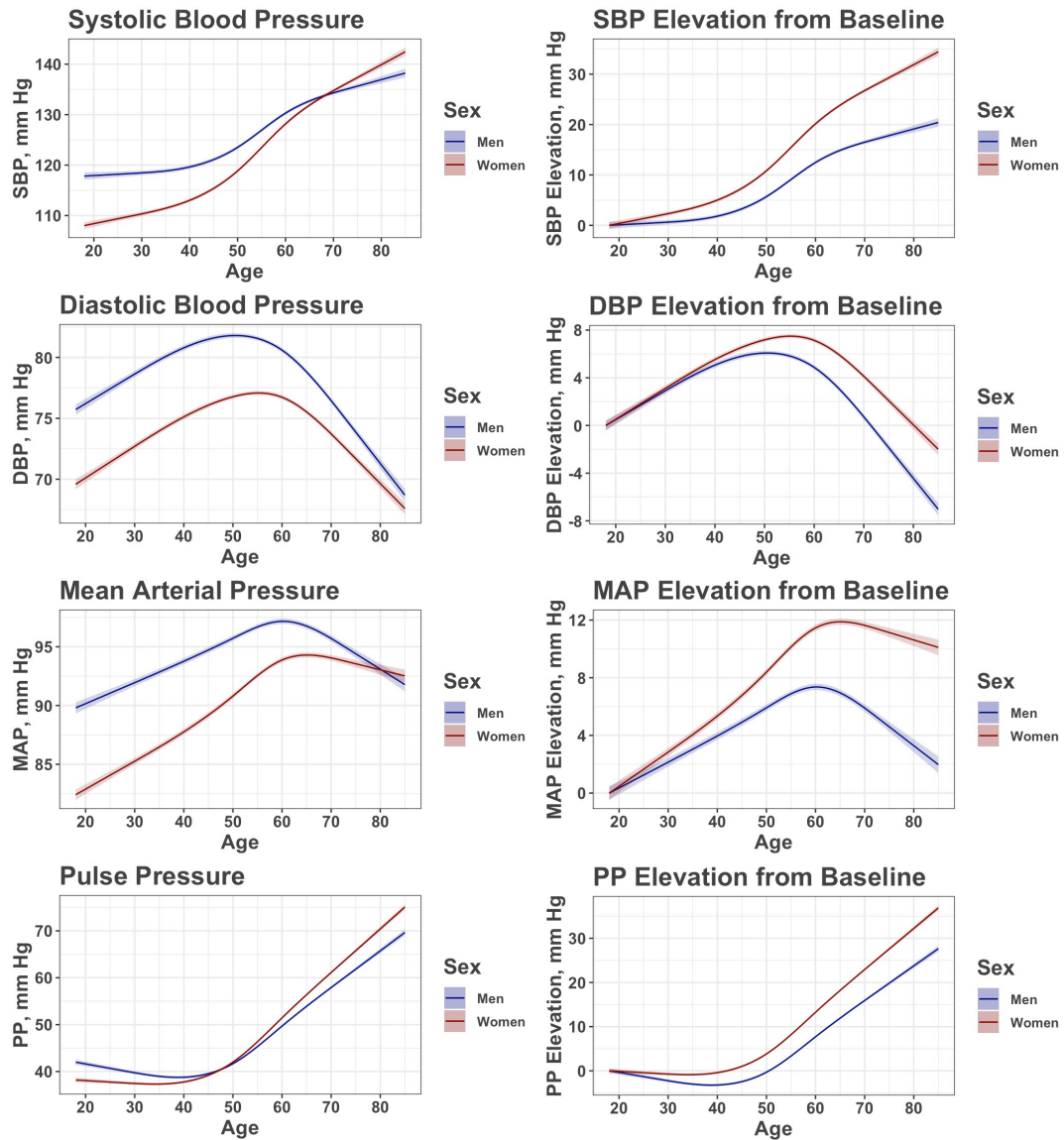
†41 participants have missing data on baseline BMI

‡409 participants have missing data on baseline DM status

§406 participants have missing data on baseline total cholesterol

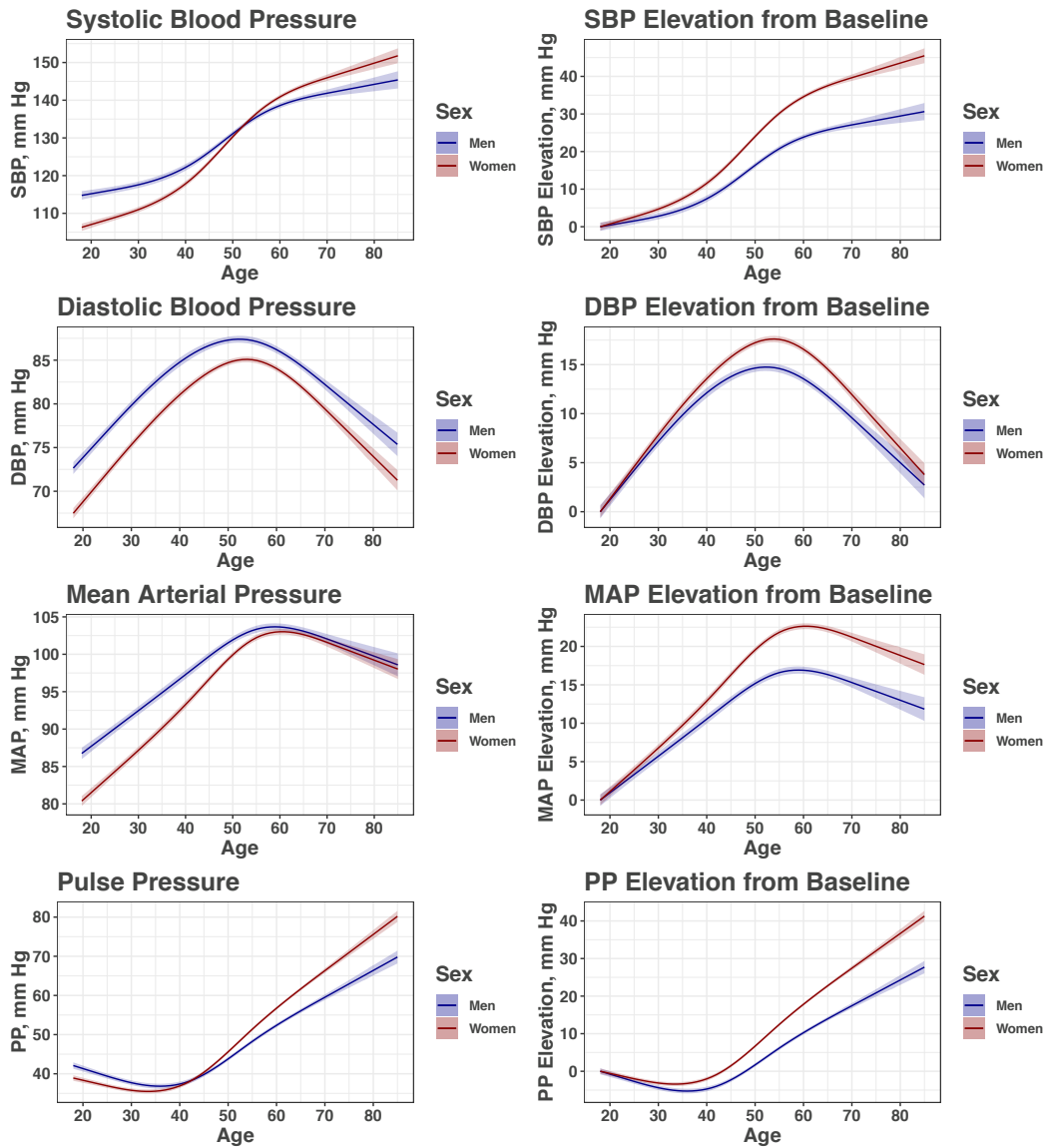
||781 participants have missing data on incident CVD

Figure S2. Sex-Specific Trajectories of Blood Pressure with Aging in Whites*



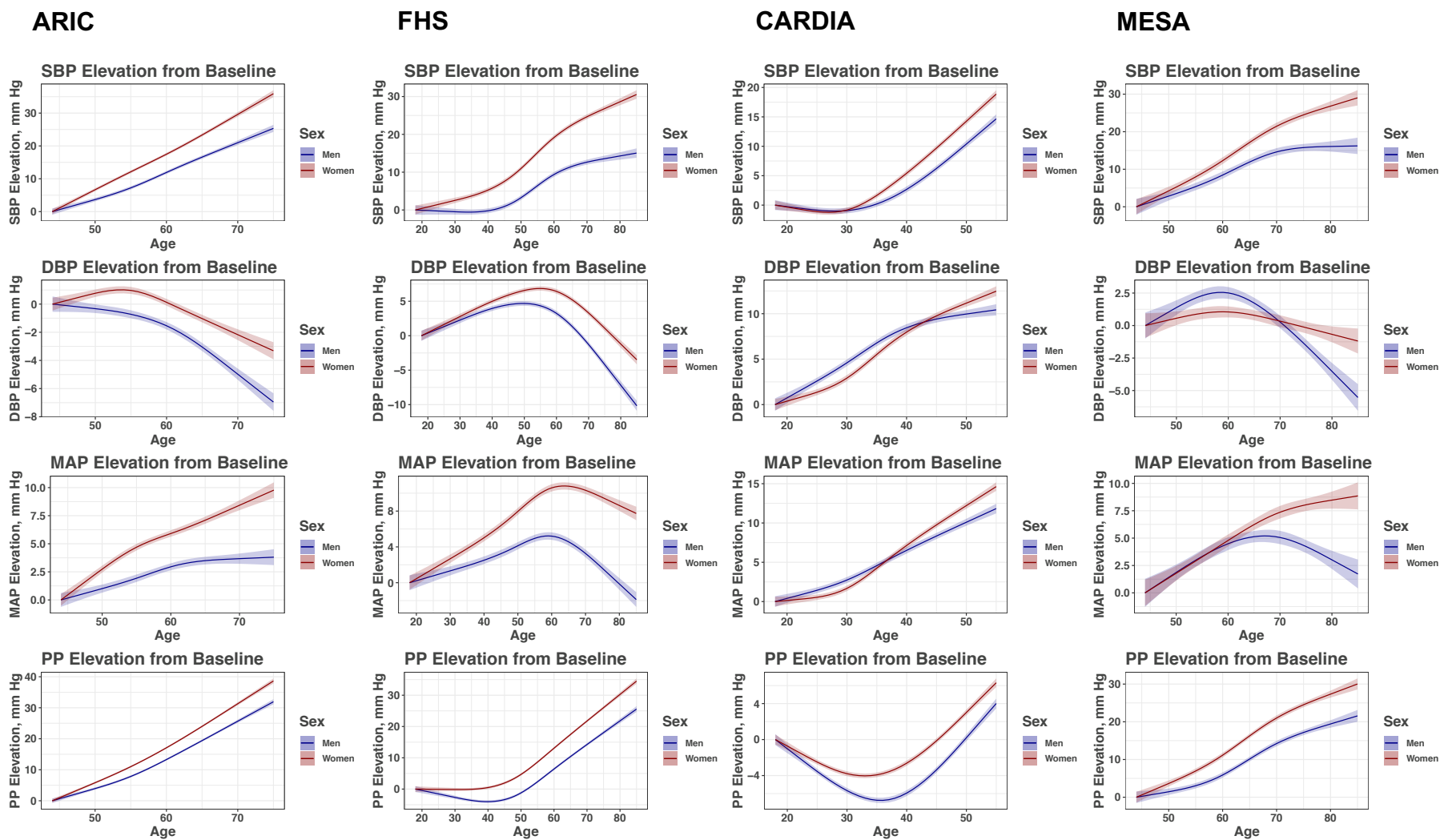
*P<0.001 for sex differences in BP trajectories shown in all figure panels

Figure S3. Sex-Specific Trajectories of Blood Pressure with Aging in Blacks*



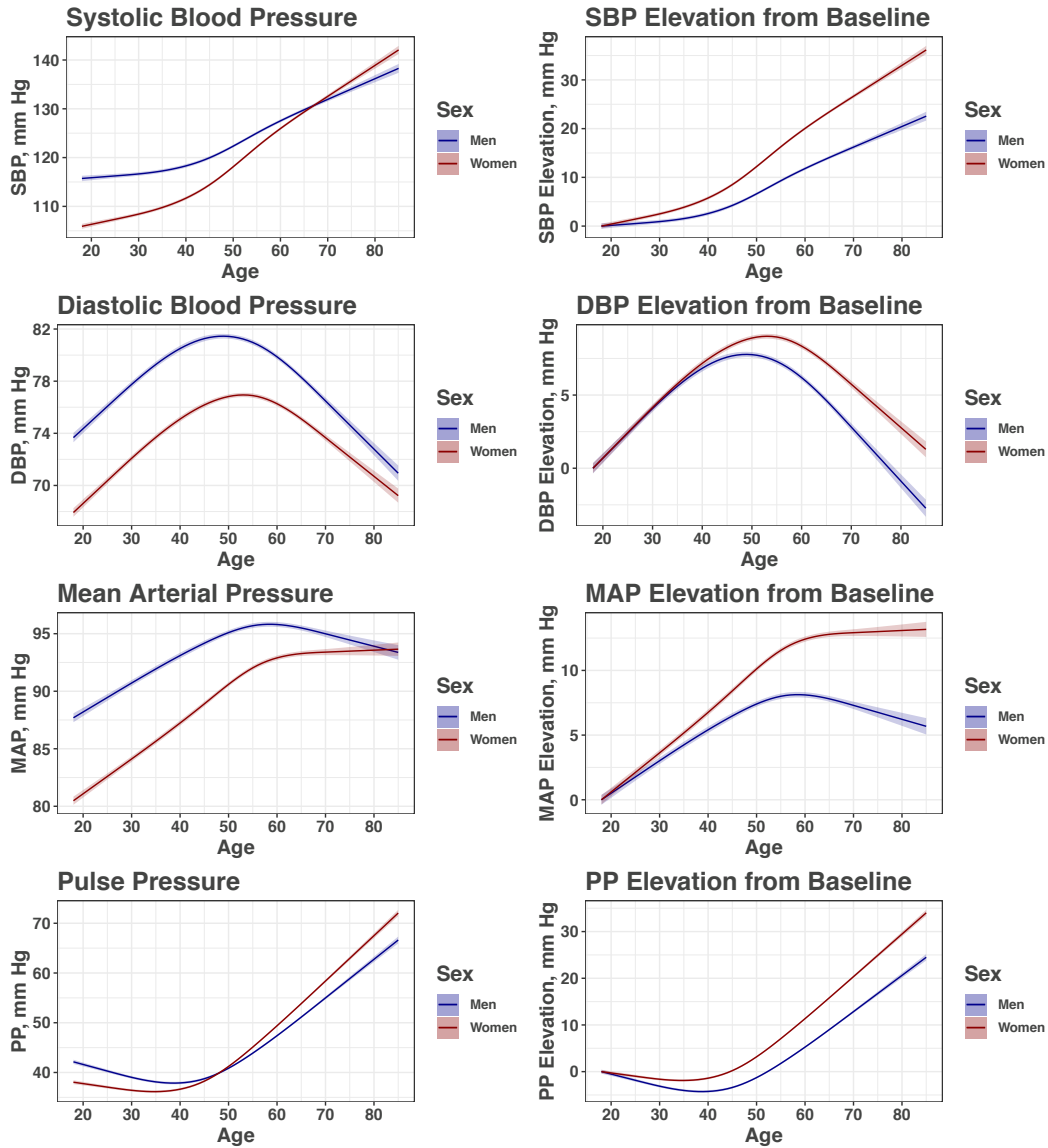
*P<0.001 for sex differences in BP trajectories shown in all figure panels

Figure S4. Sex-Specific Trajectories of Blood Pressure with Aging, Stratified by Cohort*



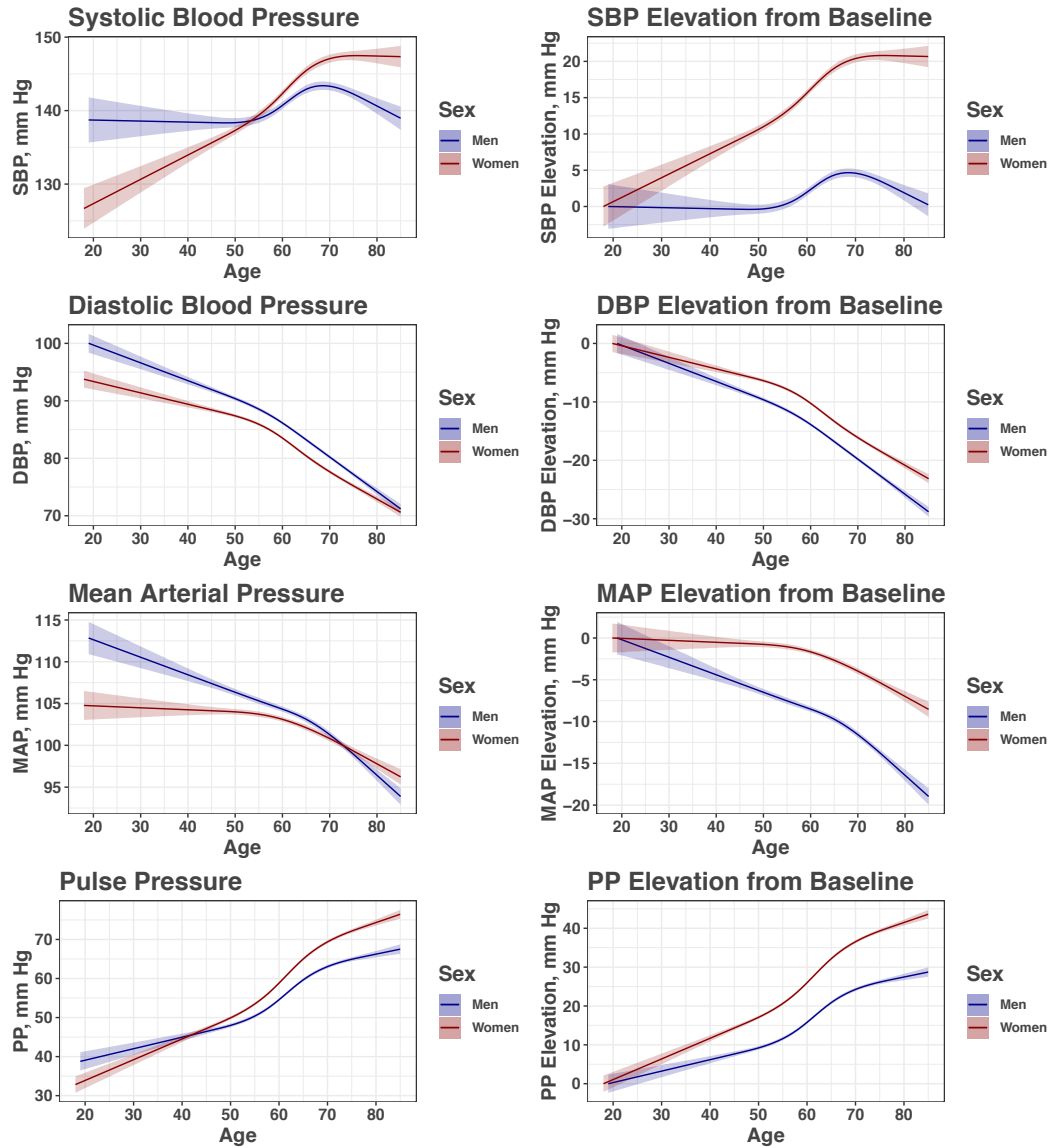
*P<0.001 for sex differences in BP trajectories shown in all figure panels

Figure S5. Sex-Specific Trajectories of Blood Pressure with Aging in Participant-Observations without Concurrent Antihypertensive Medication Use*



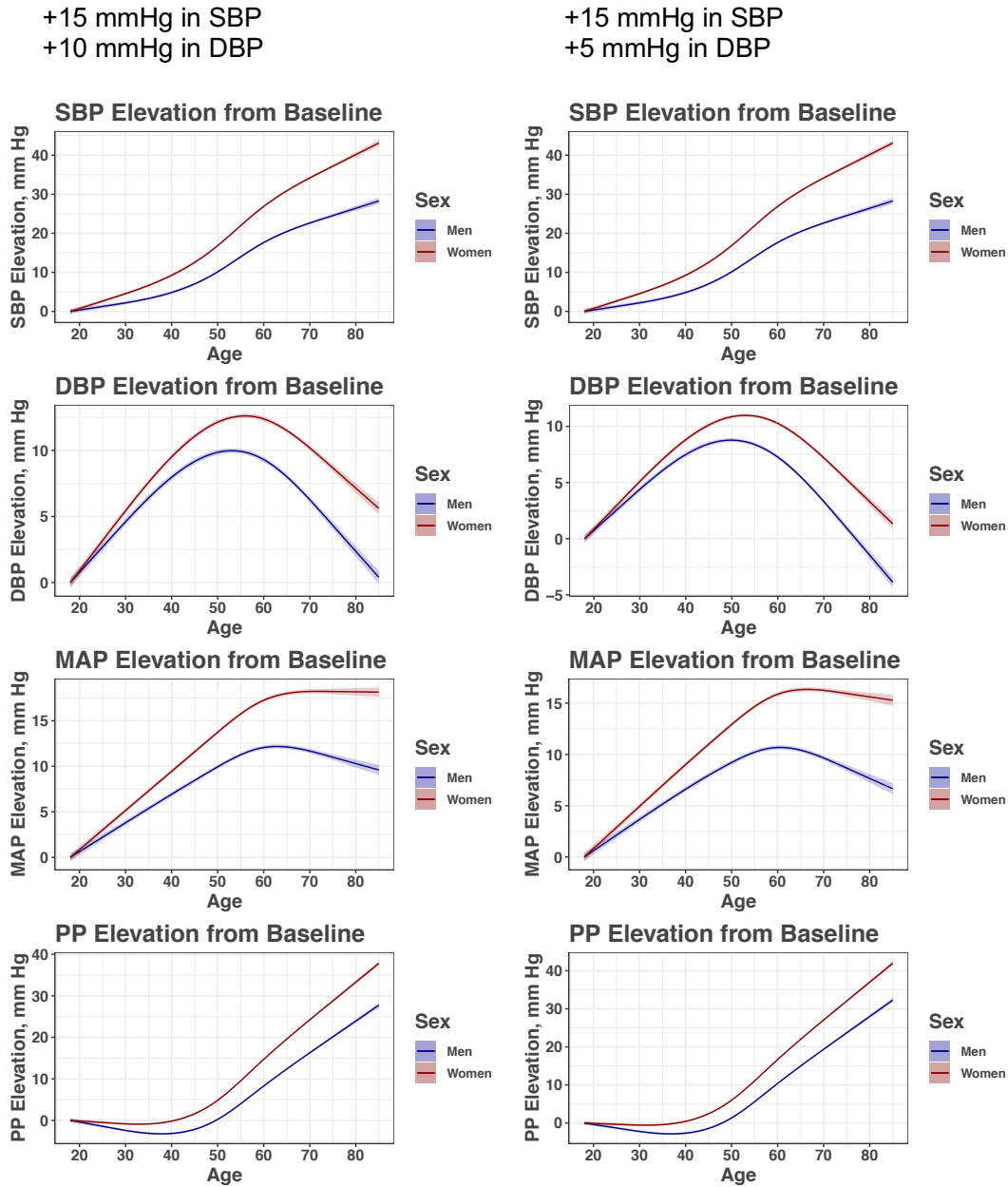
*P<0.001 for sex differences in BP trajectories shown in all figure panels

Figure S6. Sex-Specific Trajectories of Blood Pressure with Aging in Participant-Observations with Concurrent Antihypertensive Medication Use*



*P<0.001 for sex differences in BP trajectories shown in all figure panels

Figure S7. Sex-Specific Trajectories of Blood Pressure with Aging, Using Alternate Approaches to Imputing the Effects of Antihypertensive Therapy*



*P<0.001 for sex differences in BP trajectories shown in all figure panels