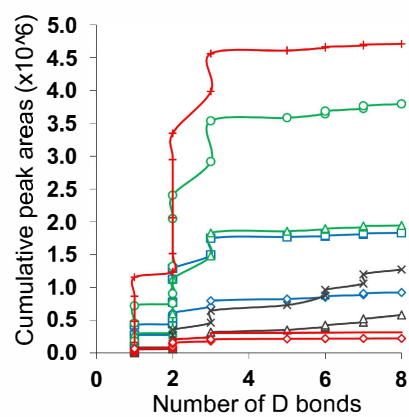
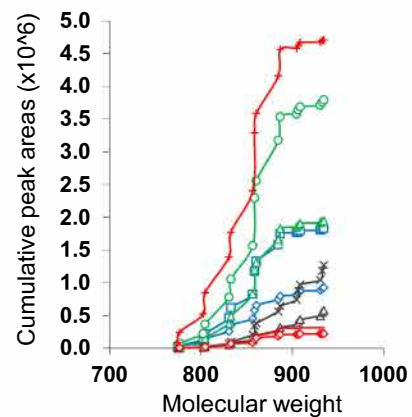
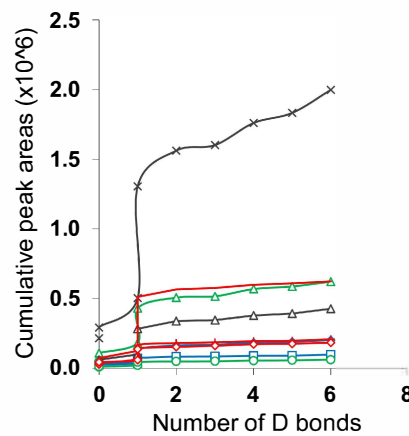
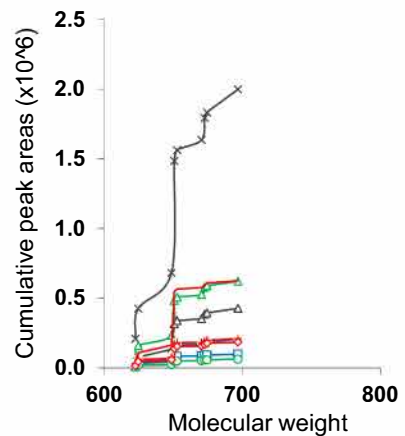


◆ NCM 460 □ FHC ▲ AA/C1 ○ HT-29 ✕ RG/C2
 ▲ AA/C1/SB10 + HCT-116 ◇ SW480 — SW620

TAG



CholE



S3 Fig. Relation between molecular weights or number of double (D) bonds and peak area in TAGs and CholE. Cumulative peak areas (primary data) according to lipid species molecular weights and number of double (D) bonds within triacylglycerols (TAG) and cholesterol-esters (CholE) are shown for all colon epithelial cell lines.